



# Creative ±1,000-SF Emeryville Office, High Ceilings, Fantastic Natural Light & Private Roof Deck Across from Pixar Studios



**1195 Park Avenue**  
Emeryville California 94608

**\$3,000 Monthly**  
**Full Service**  
**(+\$250 CAMs)**

## Property Highlights:

- Open layout office with high ceilings and large windows
- Kitchenette and bathroom
- Private roof deck
- Secured access through well maintained common hallway
- Directly [across from main entrance to Pixar](#)
- Plenty of [on-street parking](#) directly across the street
- Rent and CAMs include PG&E, water/sewer, trash and Internet

Represented by:

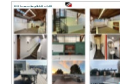
**Colby Katz**

510-450-1420

[ckatz@mrecommercial.com](mailto:ckatz@mrecommercial.com)

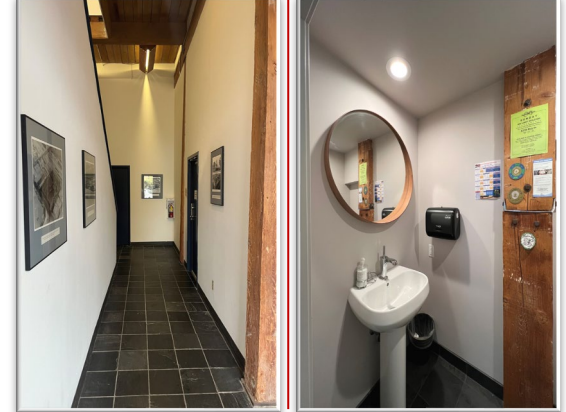
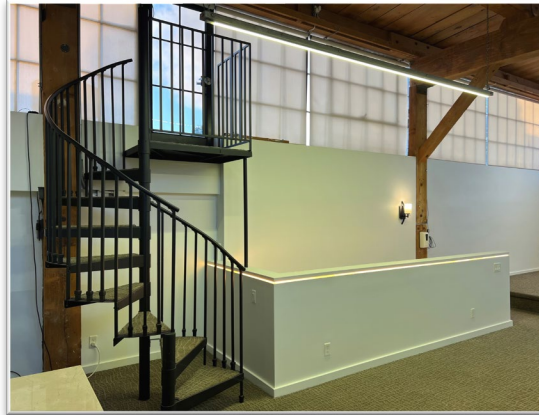
LIC# 01949015

All information herein is offered in good faith and deemed accurate but not guaranteed.





1195 Park Avenue Emeryville California 94608



All information herein is offered in good faith and deemed accurate but not guaranteed.



1195 Park Avenue Emeryville California 94608

