

FOR SUBLEASE

258 Prestige Park Rd., East Hartford, CT

MATTHEWS COMMERCIAL PROPERTIES



PROPERTY DESCRIPTION

Matthews Commercial Properties is pleased to present the availability of a prime industrial unit situated in a thriving commercial hub within East Hartford, CT. This property has excellent connectivity to major highways, making transportation and distribution convenient. With a small reception area and a wide open floor plan, this unit is laid out ideally for any manufacturing, warehousing, or distribution use.

PROPERTY FEATURES

- 6,010 SF +/- Industrial / Warehouse Unit
- 1 Loading Dock: 9.6' x 8.5'
- High Ceilings: 18.5' Clear
- Open Floor Plan
- Small Office / Reception Area with Mezzanine Above
- Secure and Well-Maintained Facility
- Gas Heat & Central A/C in Warehouse

LEASE RATE

- \$6.00 PSF + \$3.53 PSF NNN + Electric
- \$4,772.94 Per Month + Electric
- Gas Heat is Included
- Sublease Expires: 03/31/2029

NOAH D. MATTHEWS
203-721-3337
matthewsnoah@gmail.com

FOR SUBLEASE

258 Prestige Park Rd., East Hartford, CT

MATTHEWS COMMERCIAL PROPERTIES

BUILDING

Total SF	61,463 SF +/-
Total Available SF	6,010 SF +/-
Exterior Construction	Brick / Concrete Cinder Asphalt / Shingle Roof
Interior Construction	Drywall. Carpet.
Year Built	1964
Ceiling Height	18.5' Clear
Parking	Large Parking Lot
Zoning	I3

PROPERTY

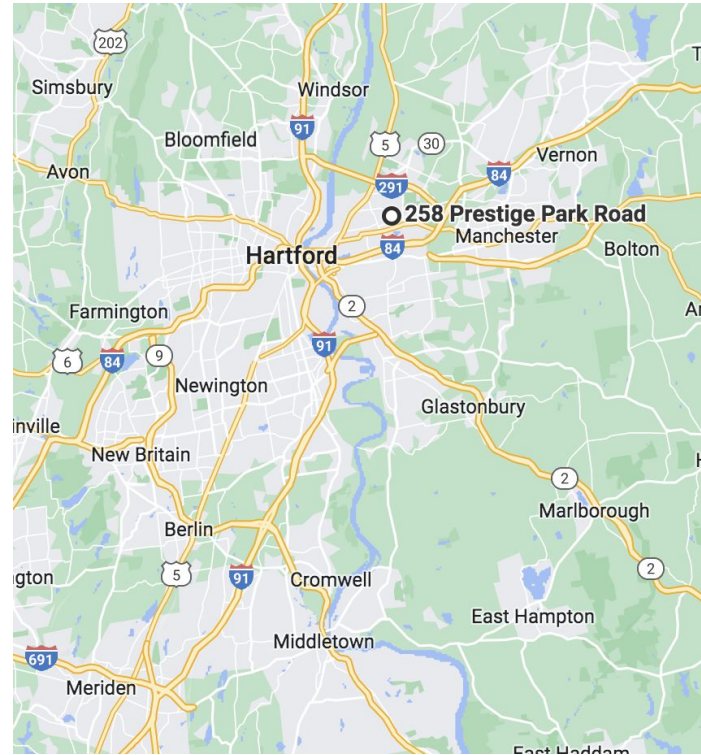
Lot Size	4.85 Acres
Distance to I-84 & I-91	1.9 Miles & 4.9 Miles

MECHANICALS & UTILITIES

Heat Source/ Type	Natural Gas - Forced Air
Electric	Eversource
Sewer	City
Water	City

TAXES

TAXES PSF	\$2.23
-----------	--------



MATTHEWS COMMERCIAL PROPERTIES LLC

819 Straits Tpke, Suite 3B

Middlebury, CT 06762

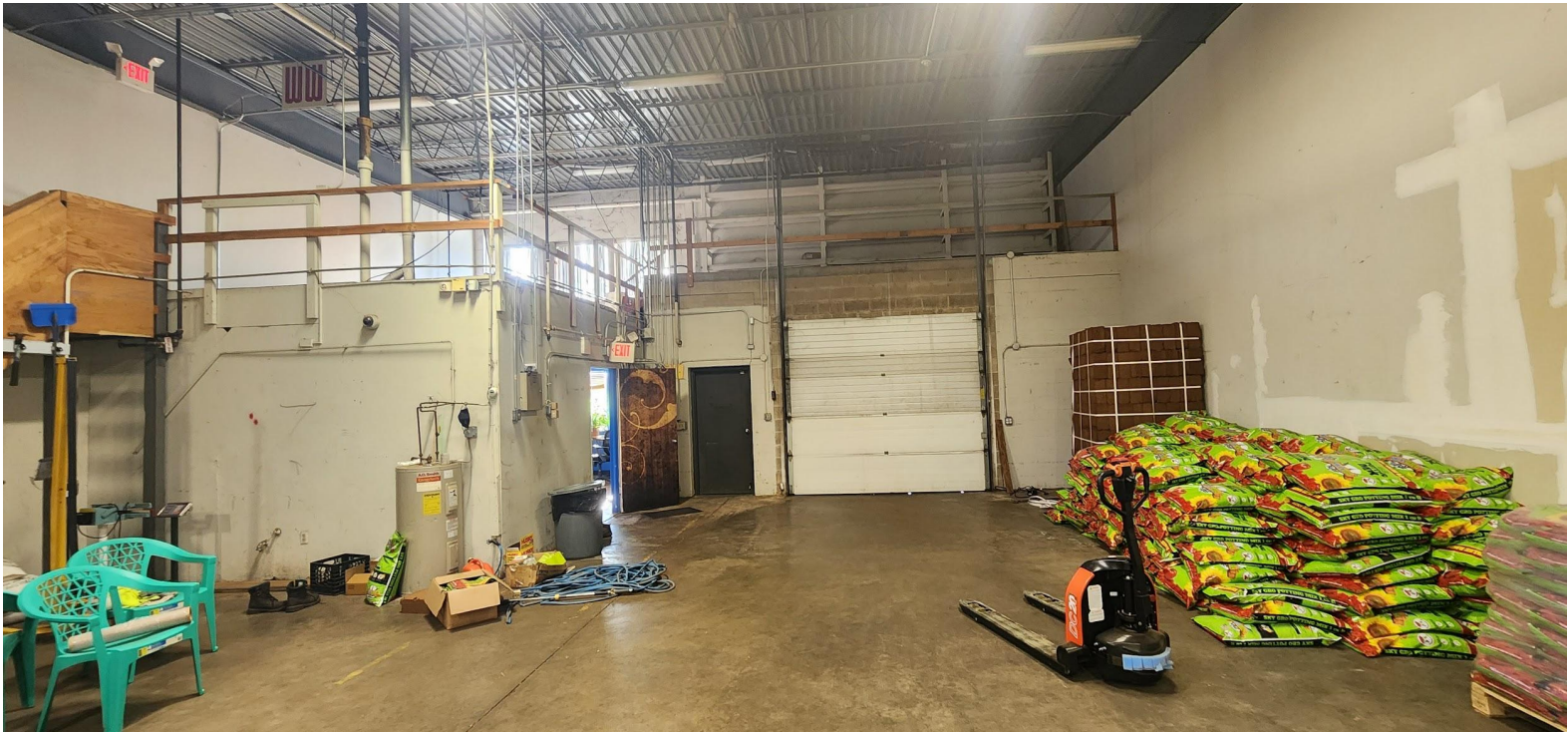
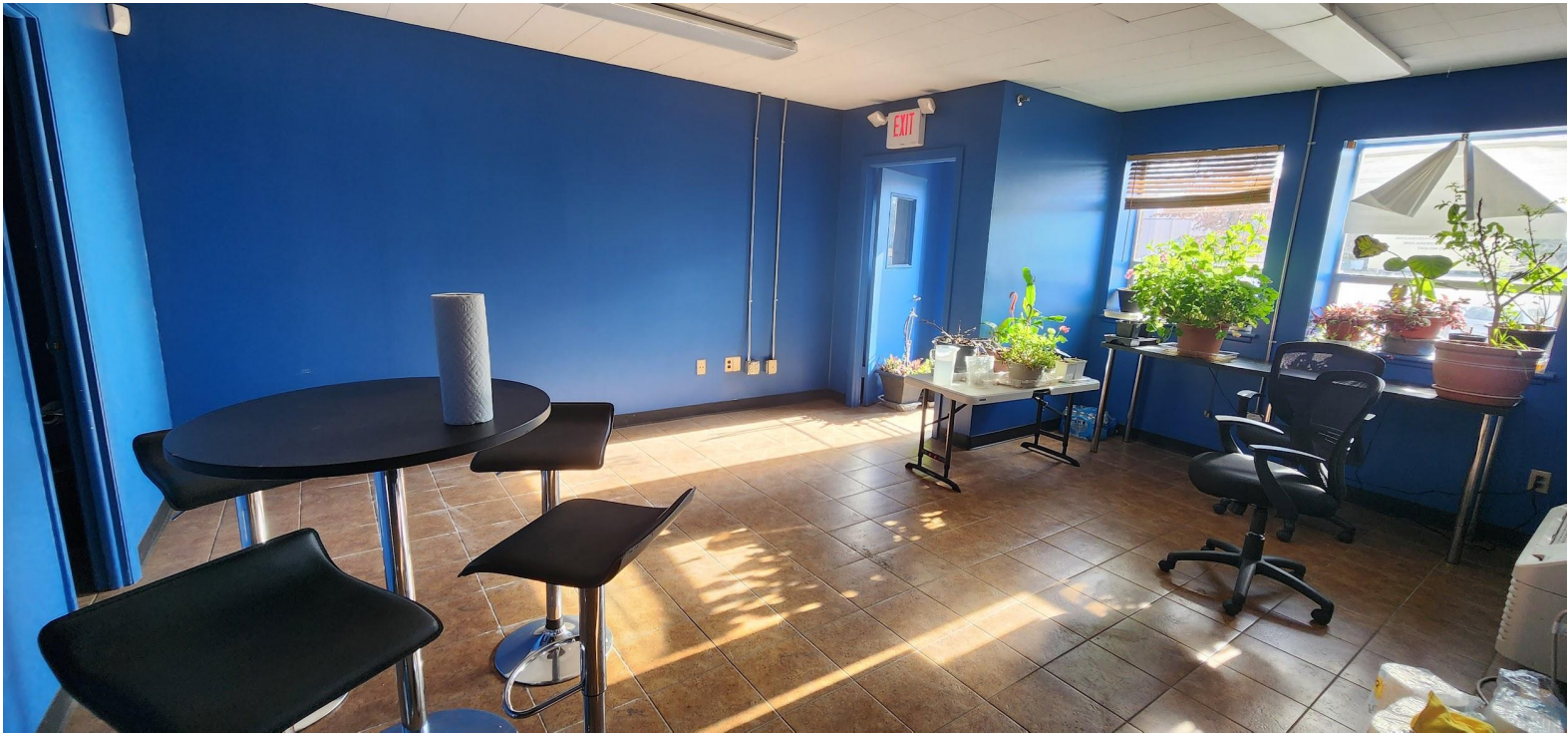
matthewscommercial.com

NOAH MATTHEWS 203.721.3337

FOR SUBLEASE

258 Prestige Park Rd., East Hartford, CT

MATTHEWS COMMERCIAL PROPERTIES



FOR SUBLEASE

258 Prestige Park Rd., East Hartford, CT

MATTHEWS COMMERCIAL PROPERTIES



MATTHEWS COMMERCIAL PROPERTIES LLC

819 Straits Tpke, Suite 3B

Middlebury, CT 06762

matthewscommercial.com

NOAH MATTHEWS 203.721.3337

FOR SUBLEASE

258 Prestige Park Rd., East Hartford, CT

MATTHEWS COMMERCIAL PROPERTIES



MATTHEWS COMMERCIAL PROPERTIES LLC

819 Straits Tpke, Suite 3B

Middlebury, CT 06762

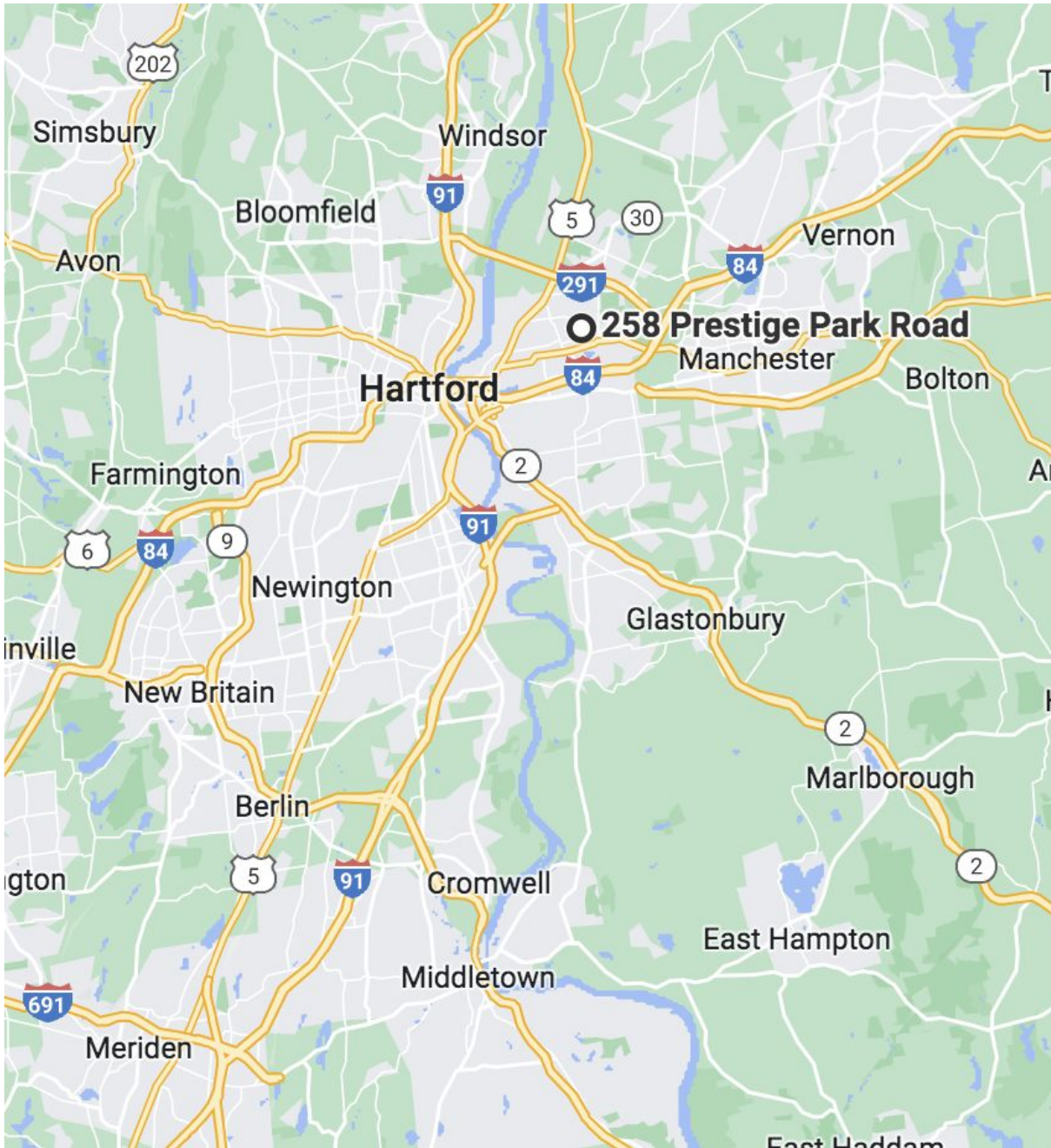
matthewscommercial.com

NOAH MATTHEWS 203.721.3337

FOR SUBLEASE

258 Prestige Park Rd., East Hartford, CT

MATTHEWS COMMERCIAL PROPERTIES



MATTHEWS COMMERCIAL PROPERTIES LLC

819 Straits Tpke, Suite 3B

Middlebury, CT 06762

matthewscommercial.com

NOAH MATTHEWS 203.721.3337

FOR SUBLEASE

258 Prestige Park Rd., East Hartford, CT

MATTHEWS COMMERCIAL PROPERTIES



NOAH D. MATTHEWS
203-721-3337
matthewsnoah@gmail.com

MATTHEWS COMMERCIAL PROPERTIES LLC
819 Straits Tpke, Suite 3B
Middlebury, CT 06762
matthewscommercial.com