



3,176 - 15,443 SF OFFICE SPACES AVAILABLE FOR SUBLEASE

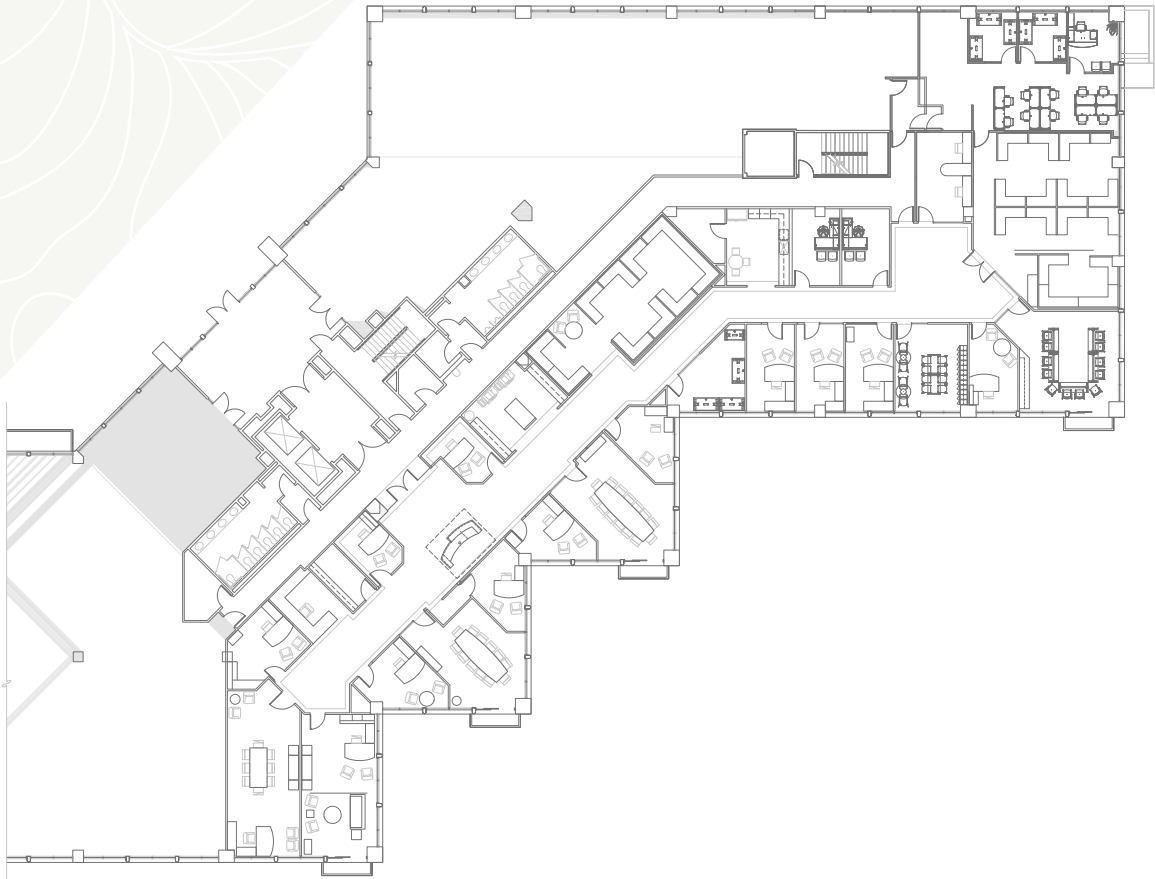
5000 CARILLON POINT

KIRKLAND | WASHINGTON

CBRE

MAIN LEVEL

12,267 SF



Suite

5250

Availability

February 2025

Size

12,267 SF

Master Lease Expiration

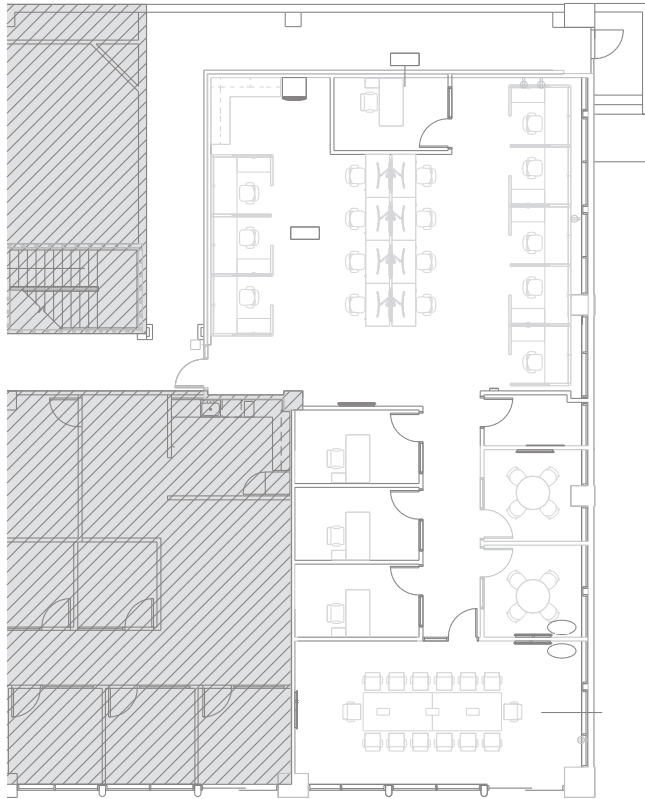
March 31, 2029



Click for
Virtual Tour

LOWER LEVEL

3,176 SF



Suite

5105

Availability

February 2025

Size

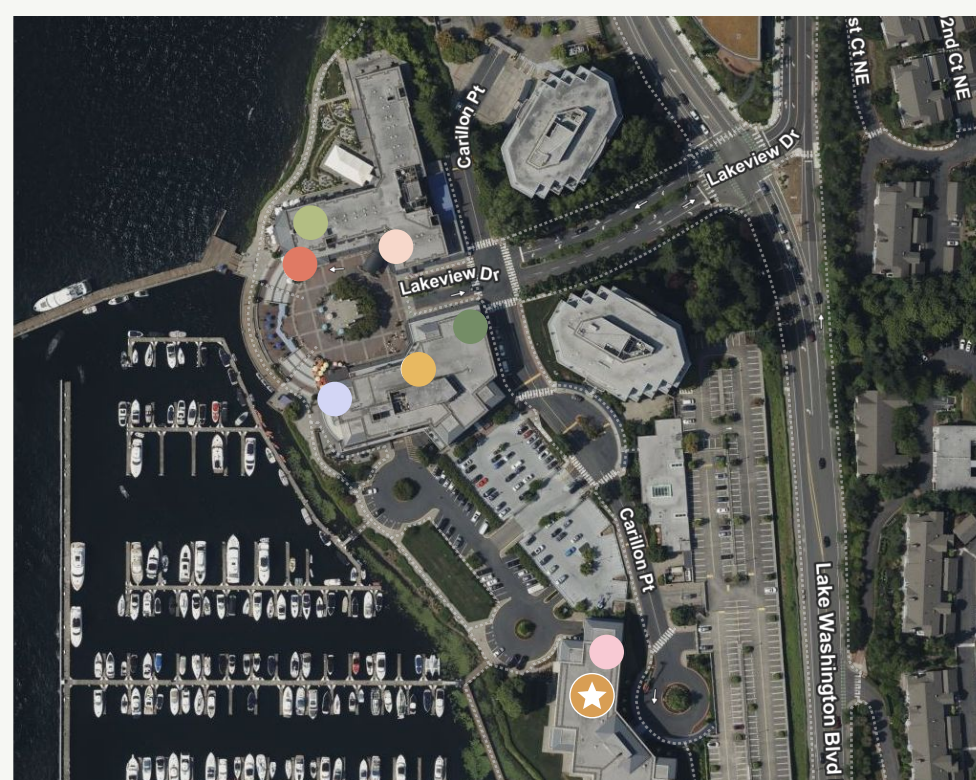
3,176 SF

**Master Lease
Expiration**

March 31, 2029



Click for
Virtual Tour

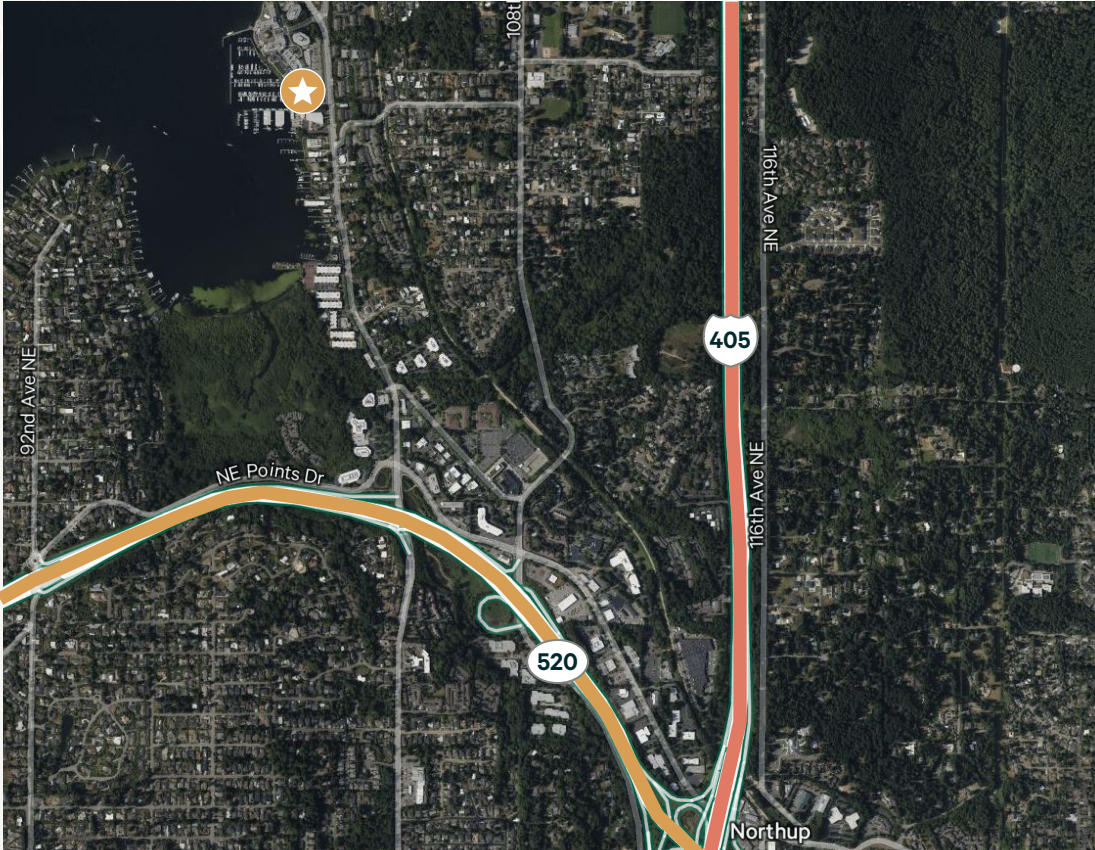


Drive Times

SR-520	5 Minutes
I-405	7 Minutes
Bellevue	12 Minutes
Seattle	20 Minutes

Carillon Point

- COMO
- El Encanto
- Woodmark Hotel and Spa
- Le Grand Bistro Americain
- Carillon Kitchen
- Carillon Point Health Club
- Starbucks
- ★ 5000 Carillon Point







3,176 - 15,443 SF OFFICE SPACES AVAILABLE FOR SUBLEASE

5000 CARILLON POINT

KIRKLAND | WASHINGTON

BRIAN BIEGE

Executive Vice President

+1 425 922 2610
brian.biege@cbre.com

JACOB HAMLIN

Vice President

+1 425 319 7252
jacob.hamlin@cbre.com

MADISON LICHTER

Transaction Management
Associate

+1 425 319 8618
madison.lichter@cbre.com

CBRE

© 2024 CBRE, Inc. All rights reserved. This information has been obtained from sources believed reliable but has not been verified for accuracy or completeness. CBRE, Inc. makes no guarantee, representation or warranty and accepts no responsibility or liability as to the accuracy, completeness, or reliability of the information contained herein. You should conduct a careful, independent investigation of the property and verify all information. Any reliance on this information is solely at your own risk. CBRE and the CBRE logo are service marks of CBRE, Inc. All other marks displayed on this document are the property of their respective owners, and the use of such marks does not imply any affiliation with or endorsement of CBRE.

Photos herein are the property of their respective owners. Use of these images without the express written consent of the owner is prohibited. DW 126.24