

ANDERSON MARKETPLACE

5020 Rhonda Road, Anderson, CA, 96007

Anchored by Walmart



ANDERSON MARKETPLACE

Anderson Marketplace, anchored by Walmart Supercenter, is well situated along Interstate 5 near Highway 273 in the heart of Northern California's regional shopping destinations. Tenants include a diverse mix of national and regional businesses including Starbucks, Panda Express, Sonic Burger, GameStop, Sally Beauty and Members 1st Credit Union. Nestled at the northern end of the Great Central Valley along the winding Sacramento River, the City of Anderson, is known for its safe environment, affordable housing, quality education and ever increasing opportunities for business and industry.

PROPERTY HIGHLIGHTS

- Busy retail hub anchored by Walmart Supercenter
- Large monument sign with top spot available
- Ample parking
- 900 SF available
- Easy access to Interstate 5 & Highway 273
- Strong tenant mix including Starbucks, Panda Express, GameStop & Sally Beauty



SITE PLAN & AVAILABILITY

AVAILABILITIES

Available

SUITE

F

SIZE

900 SF

EXISTING TENANTS

Westside Pizza

SUITE

AB

T-Mobile

C

Art Nails

D

Xpert Cuts

E

Sally Beauty Supply

G

Members 1st Credit Union

H



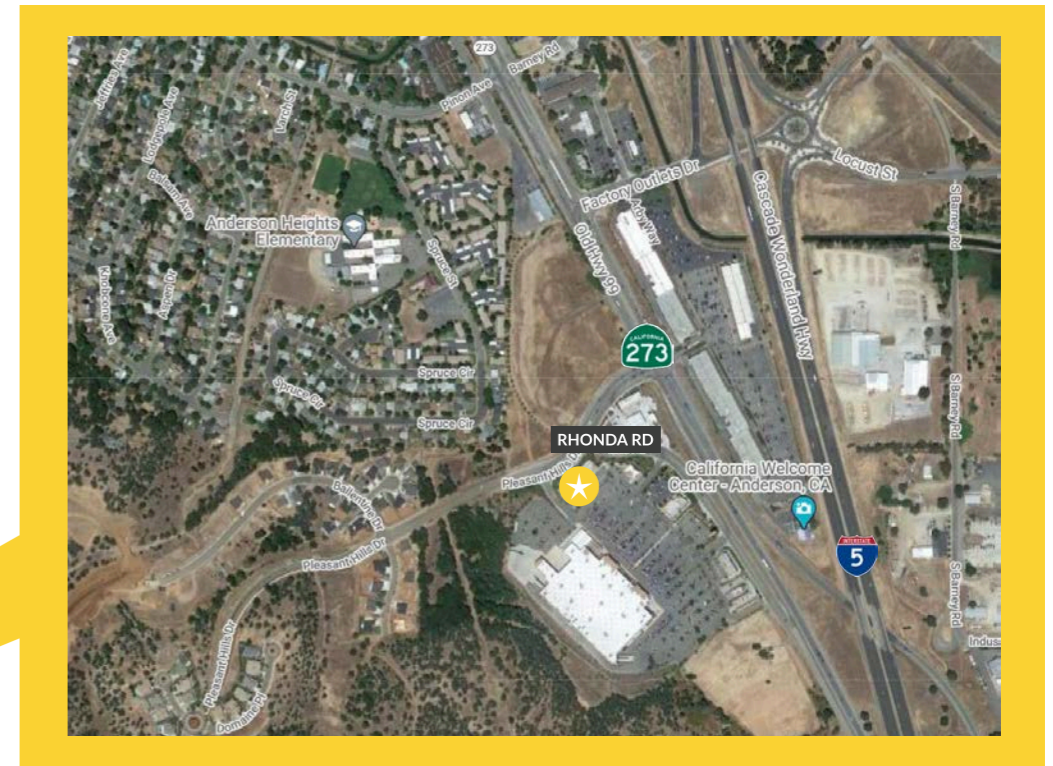
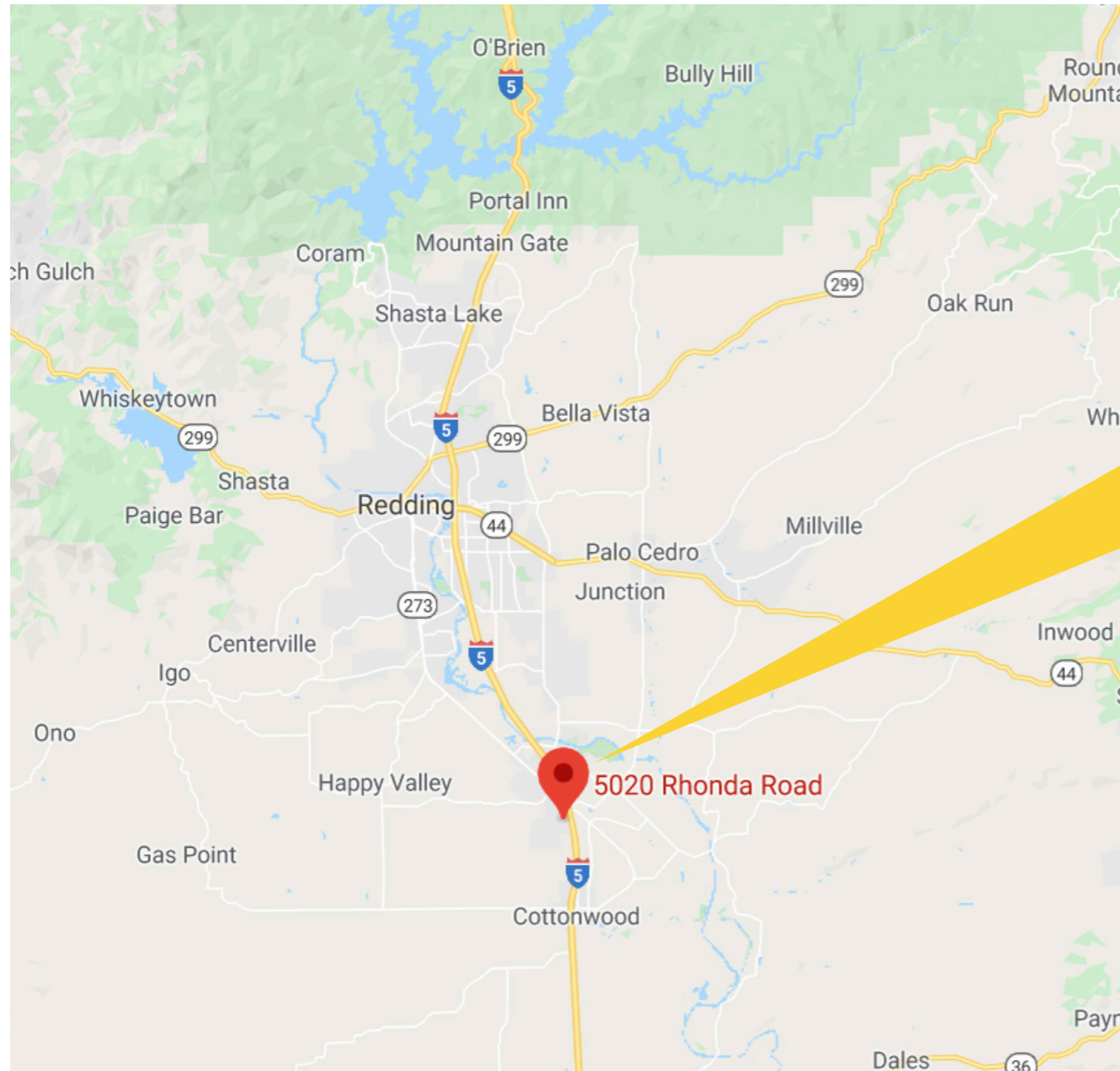
ANDERSON RETAILERS



RETAIL MAP



LOCATION MAPS & DEMOGRAPHICS

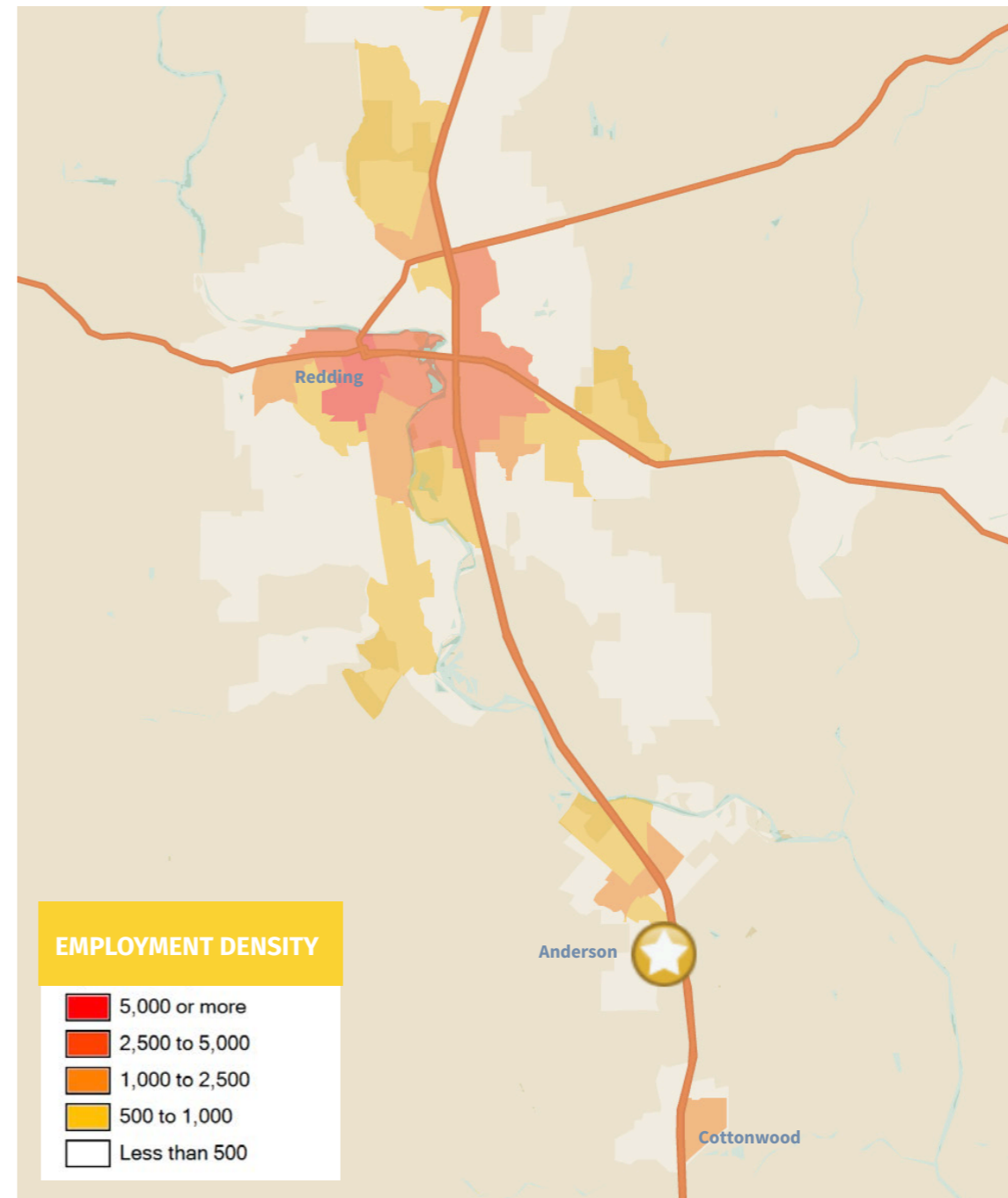
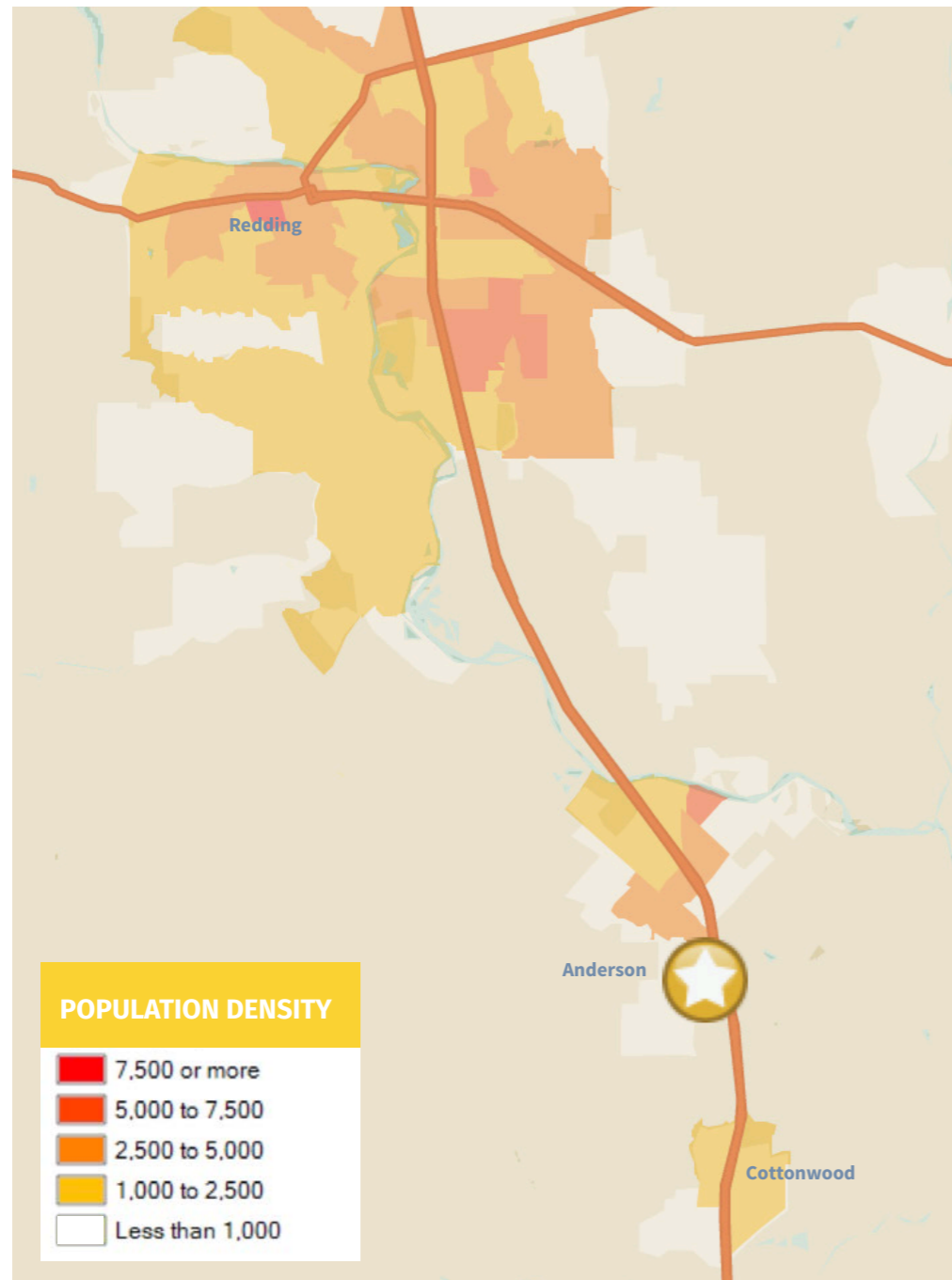


TRAFFIC COUNTS avg daily

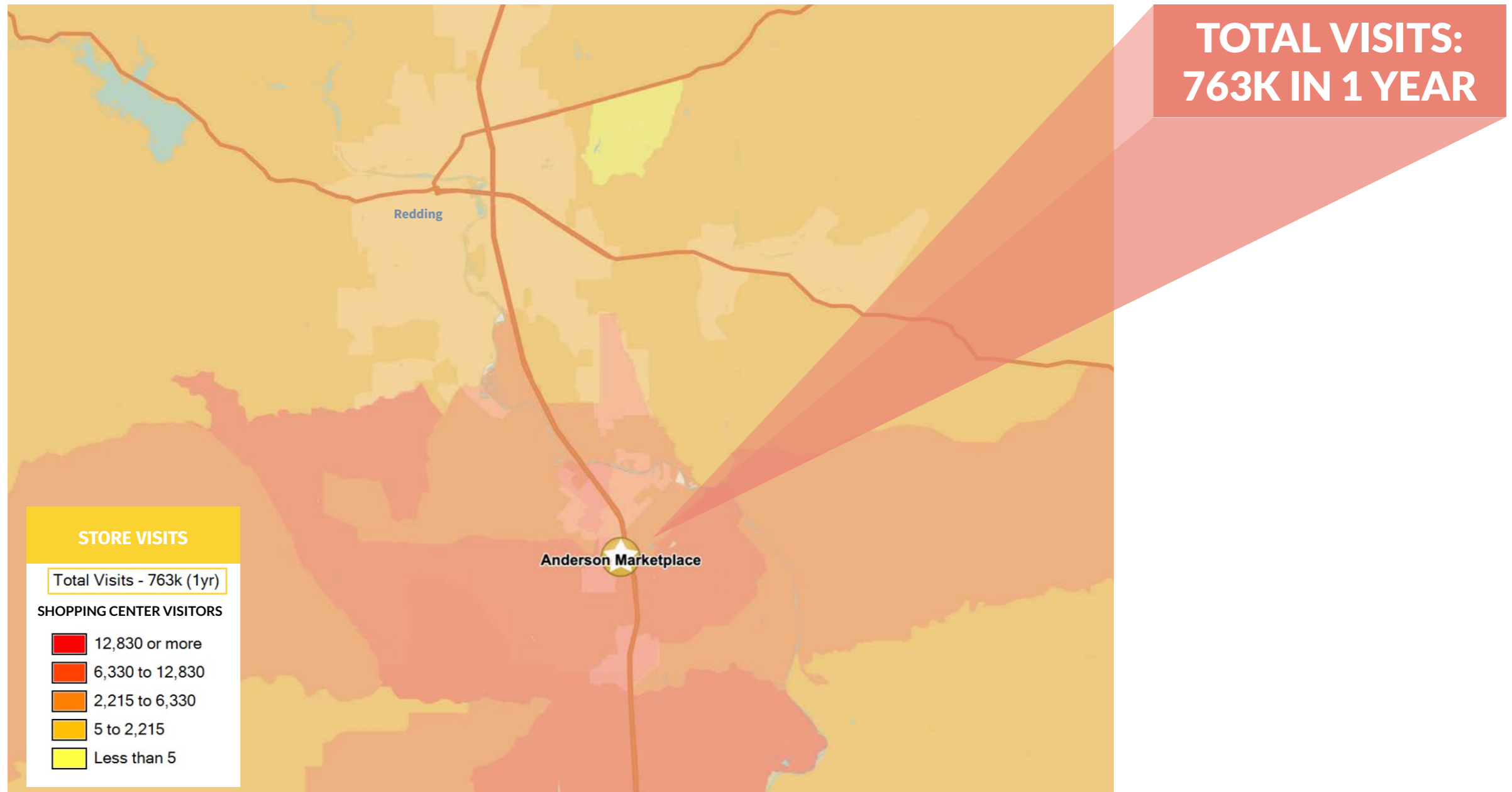
I-5	50,330
Rhonda Road	2,048
HWY 273	10,699

**Traffic counts derived from SitesUSA*

LOCATION MAPS & DEMOGRAPHICS



SHOPPING CENTER STORE VISITS



PROPERTY PHOTOS



ABOUT PROEQUITY



ProEquity Asset Management Corporation is a full service real estate company providing asset management, property management, transaction, and development and construction management services throughout the United States. We are recognized as a leading provider to some of the nation's largest commercial real estate owners and loan servicers, and one of the fastest growing and successful commercial real estate services firms in the region.

LEASING TEAM

KEITH MELLOR

Keithmellor@proequityam.com

(916) 330-4499 | CA DRE #01268501

© Copyright 2020. All rights reserved. Though the information above has been deemed to be from reliable sources, it is up to each interested party to conduct all proper due diligence, including but not limited to, any zoning or local governmental requirements, legal and tax consequence. ProEquity Real Estate Services cannot be responsible to any claim to the accuracy of any information contained herein. ProEquity Real Estate Services is a division of ProEquity Asset Management Corporation. CA DRE #01870526