



OFFICE SPACE AVAILABLE FOR LEASE

GREENFIELD PROFESSIONAL PLAZA

1635 N. Greenfield Road | Mesa, AZ 85205

LEASE RATE:

Suite 103: 3,010 sf
Space offered at: \$20.00/sf NNN

For more information please contact:

Jeremy Johnson

Senior Property Manager

602.252.9300 | jj@casehuff.com

PROFESSIONALLY LEASED & MANAGED BY



**CASE
HUFF**
& ASSOCIATES

www.casehuff.com



LOBBY



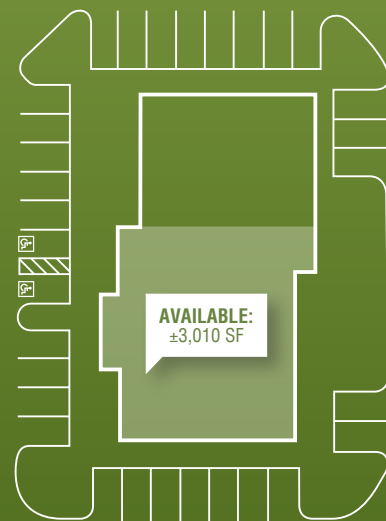
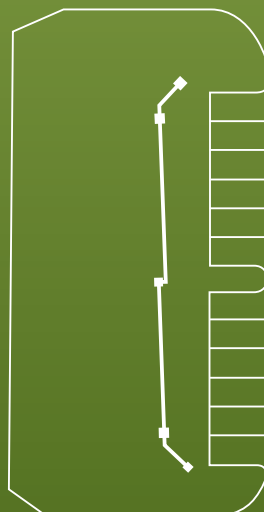
FRONT DESK



TREATMENT AREA

Site Plan

N Greenfield Road



AVAILABLE:
±3,010 SF

GREENFIELD PROFESSIONAL PLAZA

INTERIOR PHOTOS



PROFESSIONALLY LEASED & MANAGED BY



www.casehuff.com

DISCLAIMER: No warranty or representation, express or implied, is made to the accuracy of the information contained herein and same is submitted subject to errors, omissions, change of price, rental or other conditions, withdrawal without notice and to any special listing conditions imposed by our principals.

GREENFIELD PROFESSIONAL PLAZA

INTERIOR/EXTERIOR PHOTOS



PROFESSIONALLY LEASED & MANAGED BY

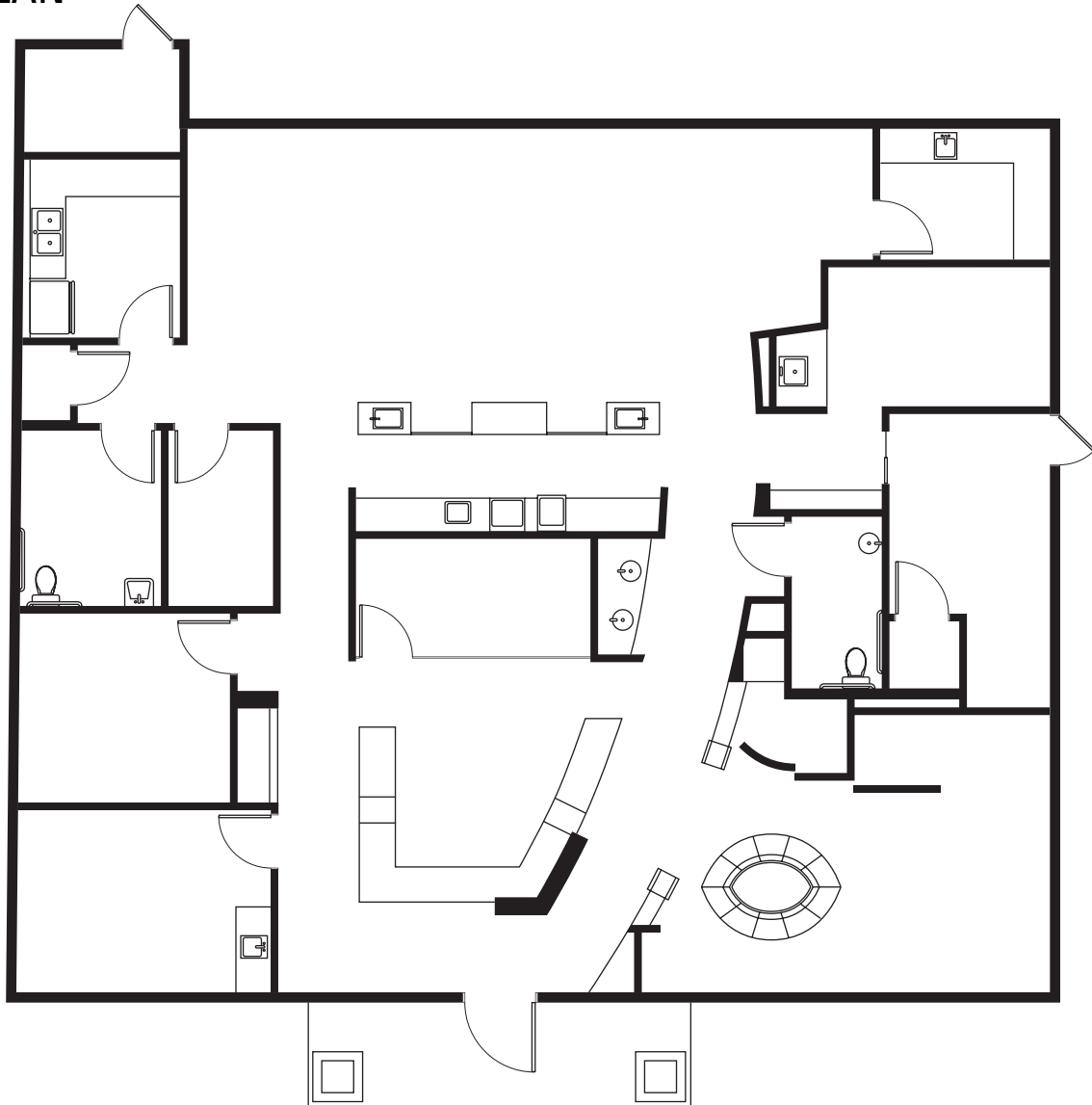


www.casehuff.com

DISCLAIMER: No warranty or representation, express or implied, is made to the accuracy of the information contained herein and same is submitted subject to errors, omissions, change of price, rental or other conditions, withdrawal without notice and to any special listing conditions imposed by our principals.

GREENFIELD PROFESSIONAL PLAZA

FLOORPLAN



Lease Rate:

Suite 103: 3,010 sf
Space offered at: \$20.00/sf NNN

Location

Just a half mile south of Falcon Field Airport, two miles south of the Loop 202. Suite 103 has visibility on Greenfield Road.

For more information please contact:

Jeremy Johnson

Senior Property Manager

602.252.9300 | jj@casehuff.com

PROFESSIONALLY LEASED & MANAGED BY



www.casehuff.com

DISCLAIMER: No warranty or representation, express or implied, is made to the accuracy of the information contained herein and same is submitted subject to errors, omissions, change of price, rental or other conditions, withdrawal without notice and to any special listing conditions imposed by our principals.