

LEASE

SOUTH KING STREET CENTER

818-842 South King Street Center Leesburg, VA 20175



PROPERTY DESCRIPTION

Beautiful boutique village center located in the heart of Leesburg along Route 15 (South King St).

PROPERTY HIGHLIGHTS

- Daily traffic count of over 24,500 cars along Route 15
- Easy Toll Road access (located immediately off exit)
- Open floorplans with high ceilings & lots of windows
- Onsite daycare & bank generates daily foot traffic

OFFERING SUMMARY

Lease Rate:	Negotiable
Available SF:	1,281 SF
Building Size:	11,000 SF
Zoning:	RES-TOWN

DEMOGRAPHICS	1 MILE	3 MILES	5 MILES
Total Households	4,346	18,997	29,648
Total Population	11,029	55,217	87,427
Average HH Income	\$110,892	\$141,650	\$166,514

Mercedes Taylor
703 994 9570



**COLDWELL BANKER
COMMERCIAL**
ELITE

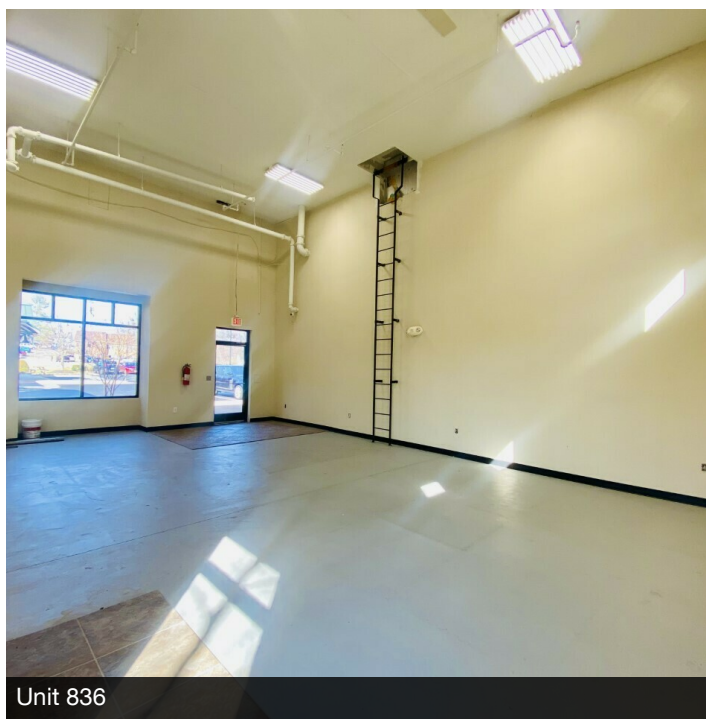
LEASE

SOUTH KING STREET CENTER

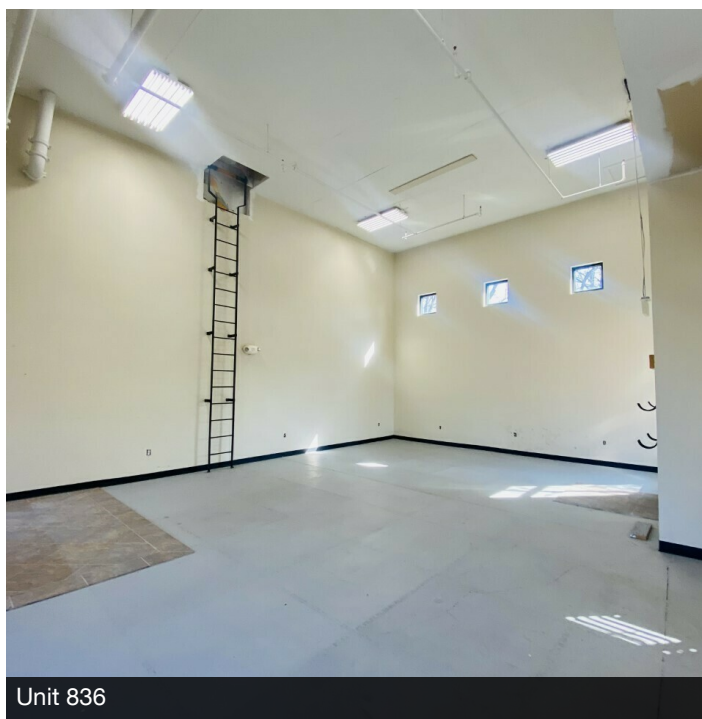
818-842 South King Street Center Leesburg, VA 20175



Exterior Unit 836



Unit 836



Unit 836

Mercedes Taylor
703 994 9570

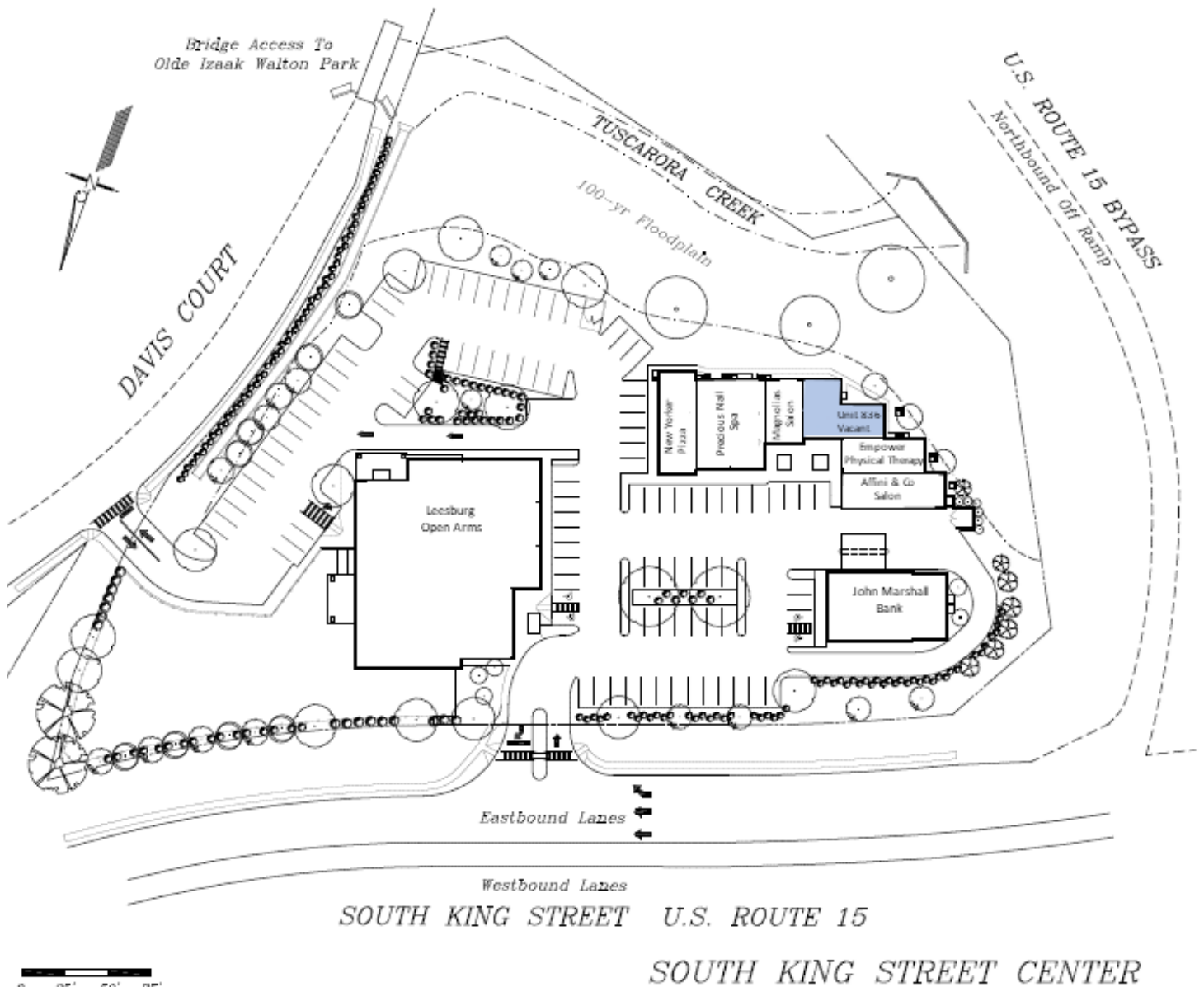


COLDWELL BANKER
COMMERCIAL
ELITE

LEASE

SOUTH KING STREET CENTER

818-842 South King Street Center Leesburg, VA 20175



Mercedes Taylor
703 994 9570

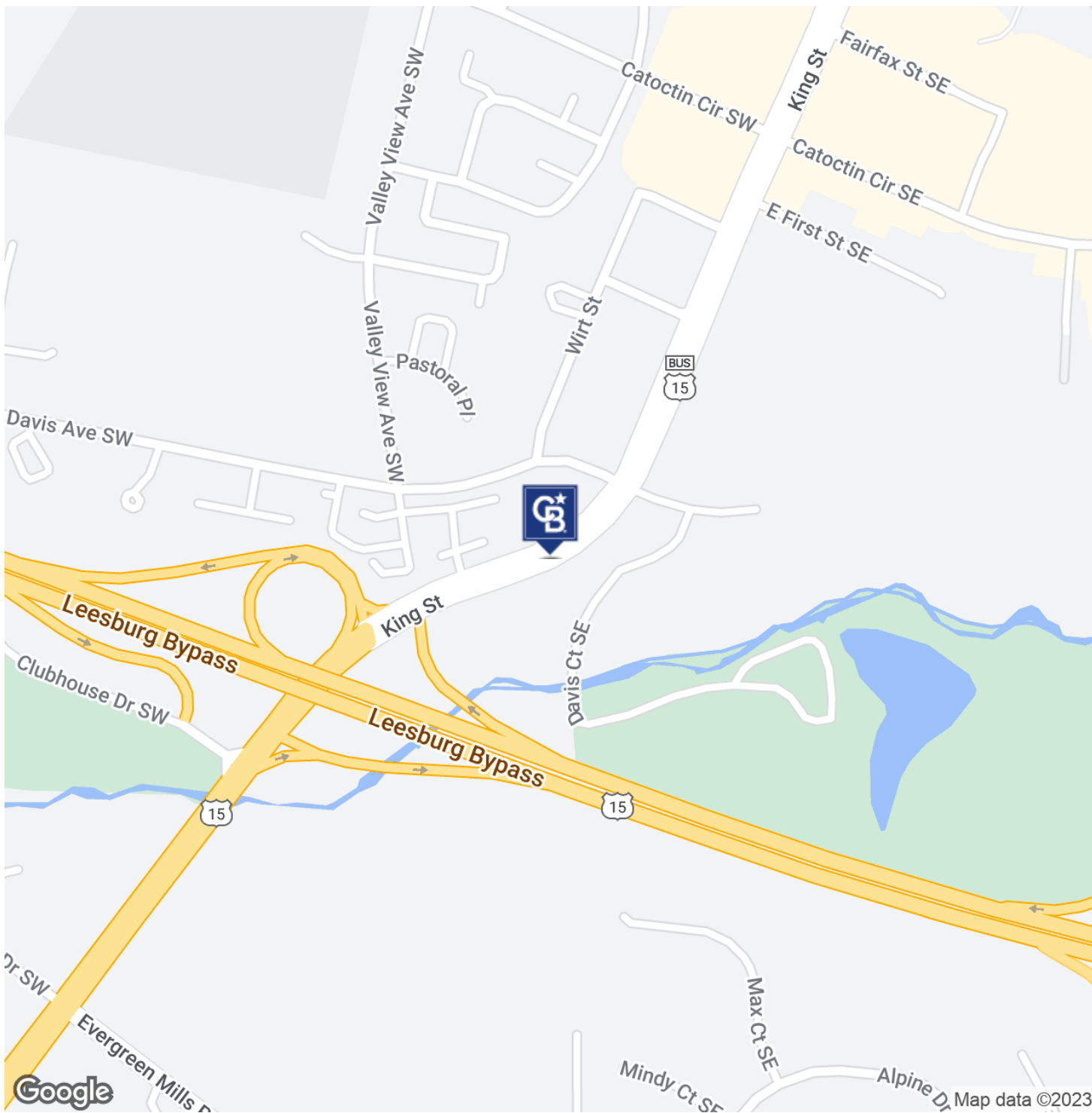


**COLDWELL BANKER
COMMERCIAL**
ELITE

LEASE

SOUTH KING STREET CENTER

818-842 South King Street Center Leesburg, VA 20175



Mercedes Taylor
703 994 9570

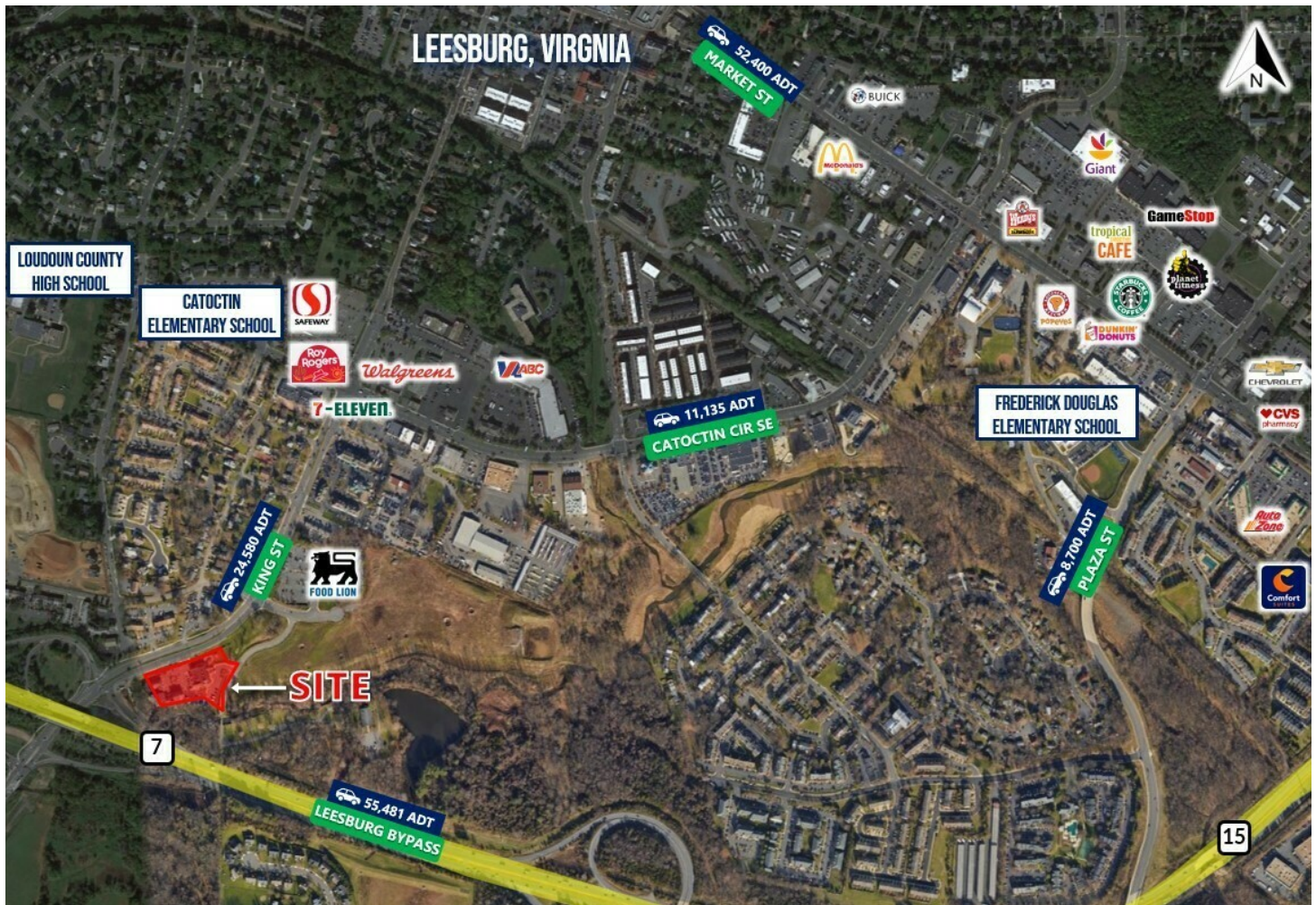


COLDWELL BANKER
COMMERCIAL
ELITE

LEASE

SOUTH KING STREET CENTER

818-842 South King Street Center Leesburg, VA 20175



Mercedes Taylor
703 994 9570



**COLDWELL BANKER
COMMERCIAL**
ELITE