

# For Sale

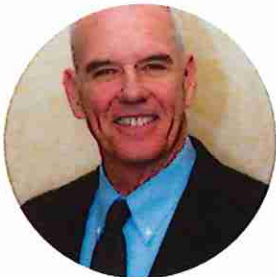
## FLORENCE CRITTENDEN HOUSE



**6323 Burbridge Street  
Philadelphia PA 19144**

**8772 SF  
ASKING \$725,000**

This 8,700 SF stone/brick building has a .34 acre lot with 108 front-feet and is located on a red brick lane in Germantown. Zoned RSA3 and an approved health care facility, it is an excellent opportunity for conversion to multifamily or residential development. Assembled from 2 semi-detached houses and improved with a large brick addition, it has a spacious yard.



**Patrick J Gallagher**  
Associate Broker  
215-681-5062  
patrick.gallagher@foxroach.com  
PA Lic #: 47687

**BERKSHIRE  
HATHAWAY**  
HOMESERVICES  

---

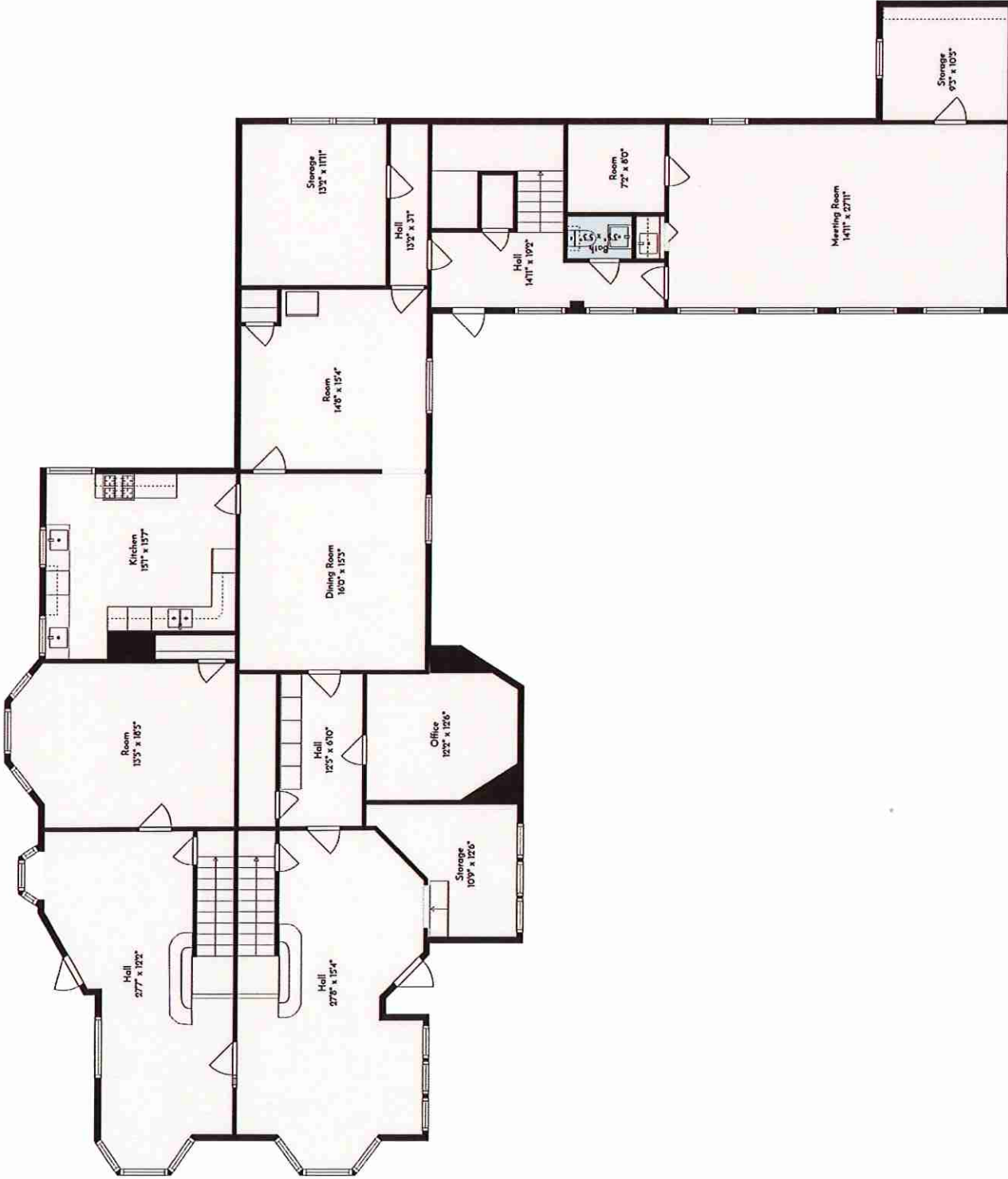
**FOX & ROACH,  
REALTORS®**

Berkshire Hathaway HomeServices Fox & Roach, REALTORS | 8400 Germantown Avenue Ste. 2 Philadelphia, PA 19118  
(215) 247-3750 |

©2026 BHH Affiliates, LLC. Real Estate Brokerage Services are offered through the network member franchisees of BHH Affiliates, LLC. Most franchisees are independently owned and operated. Berkshire Hathaway HomeServices and the Berkshire Hathaway HomeServices symbol are registered service marks of Columbia Insurance Company, a Berkshire Hathaway affiliate. Information not verified or guaranteed. If your property is currently listed with a Broker, this is not intended as a solicitation. Equal Housing Opportunity. PA Lic #: 47687



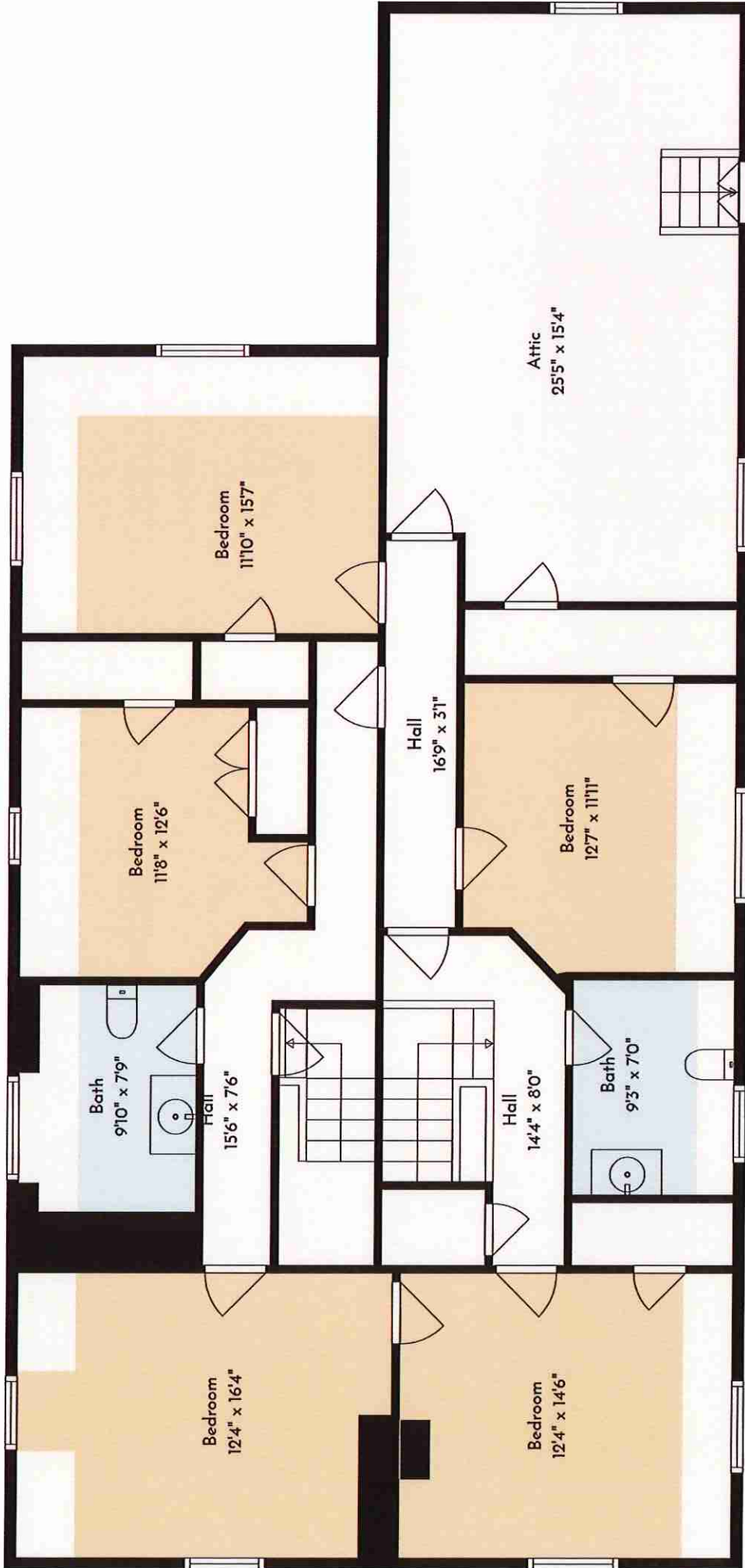




**Total GLA: 7221 sq. ft | Total: 8406 sq. ft**  
 1st floor: 2865 sq. ft (Excluded areas 403 sq. ft)  
 2nd floor: 3087 sq. ft (Excluded areas 116 sq. ft)  
 3rd floor: 1269 sq. ft (Excluded areas 682 sq. ft)

Sizes And Dimensions Are Approximate.





**Total GLA: 7221 sq. ft | Total: 8406 sq. ft**  
 1st floor: 2865 sq. ft (Excluded areas 403 sq. ft)  
 2nd floor: 3087 sq. ft (Excluded areas 116 sq. ft)  
 3rd floor: 1269 sq. ft (Excluded areas 682 sq. ft)

Sizes And Dimensions Are Approximate.