

# OFFERING MEMORANDUM



## Industrial Bay Spaces for Lease



47 Liberty St. Units 5, 6, & 8  
**Plymouth MA**

**FOR LEASE**

Price

Spaces

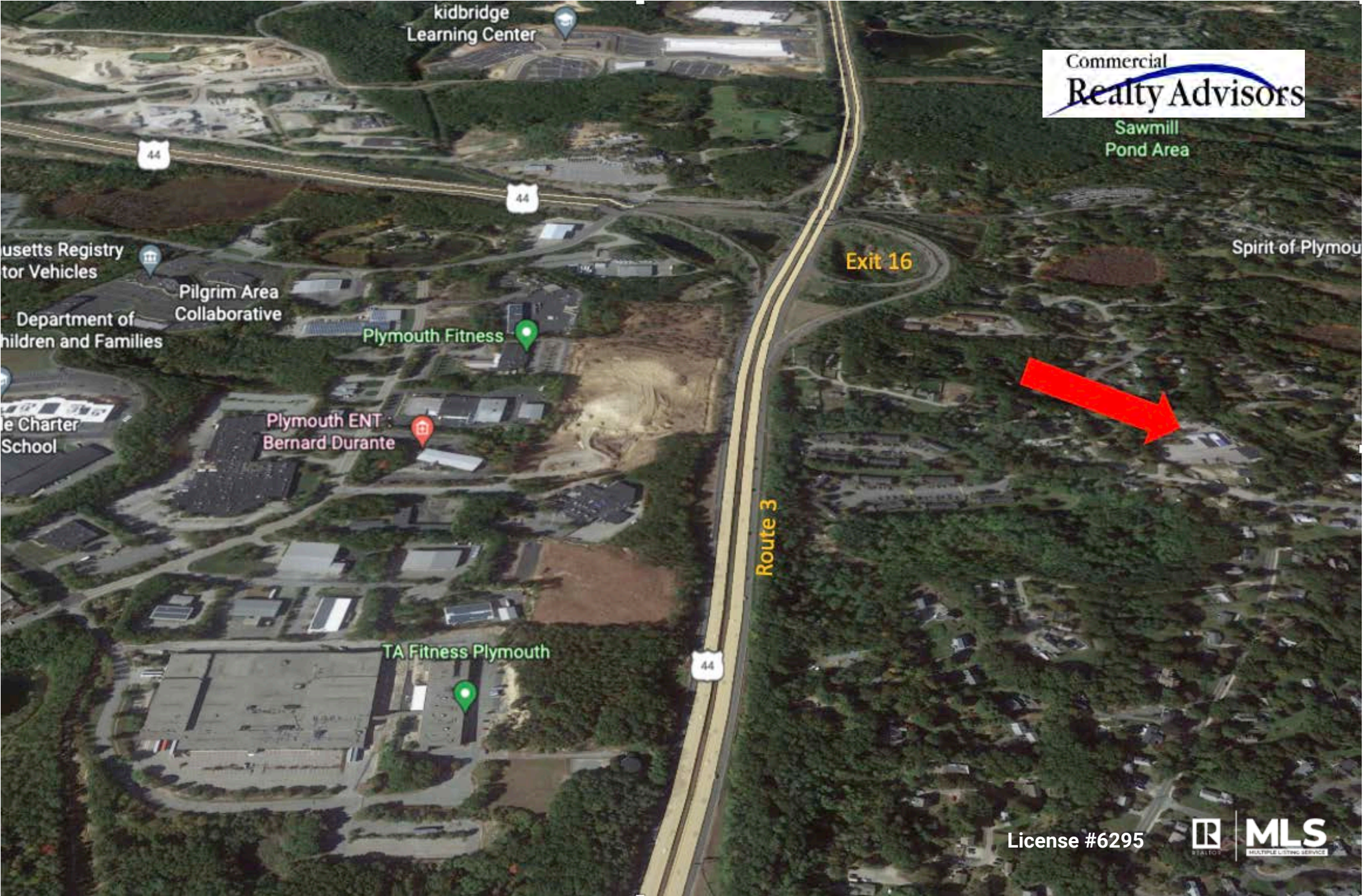
**\$875-1,350/month plus utilities 720-2,716+/- Sq. Ft.**

### Property Highlights

- ✓ 3 Units, offered individually or collectively. **Unit 5 is 720 +/- Sq Ft and is offered at \$875/Month + Utilities**
- ✓ **Unit 6 is 976+/- Sq Ft and is offered at \$1,250/Month + Utilities**
- ✓ **Unit 8 is 1,020+/- Sq Ft and is offered at \$1,350/Month + Utilities**

- ✓ Easy access to MA Routes 3, 3A, and 44 at Exit 16
- ✓ Parking, Fenced yard, Forced Hot Air heat fueled by gas





Commercial  
**Realty Advisors**

Sawmill  
Pond Area

Kidbridge  
Learning Center

44

44

Massachusetts Registry  
of Motor Vehicles



Pilgrim Area  
Collaborative

Department of  
Children and Families

Plymouth Fitness



Plymouth ENT  
Bernard Durante



Charter  
School

Exit 16

Spirit of Plymouth

Route 3

44

TA Fitness Plymouth



License #6295



**MLS**  
MULTIPLE LISTING SERVICE

### Commercial Realty Advisors' Disclaimer

This information has been secured from sources we believe to be reliable, but we make no representation or warranties, expressed or implied, as to the accuracy of the information contained herein. Commercial Realty Advisors, Inc. and the agent presenting this opportunity represent the Seller / Lessor, and are neither architects, engineers, inspectors, accountants nor attorneys, and therefore all buyers / tenants must consult with their own architects, engineers, inspectors, accountants or attorneys as to financial, zoning, lot line, handicapped accessibility, flood plain, mechanical, structural, or environmental concerns. Buyer must verify all information and bears all the risk for inaccuracies. Referenced square footage and acreage and sketched outlines are approximate, and this information package is subject to change.



# Area Demographics

## PLYMOUTH DEMOGRAPHICS

<b>Estimated Population</b>	7,399
<b>Estimated Households</b>	3,624
<b>Estimated Median Household Income</b>	\$52,933
<b>Estimated Total Businesses</b>	12,720

## FINANCIAL INFORMATION

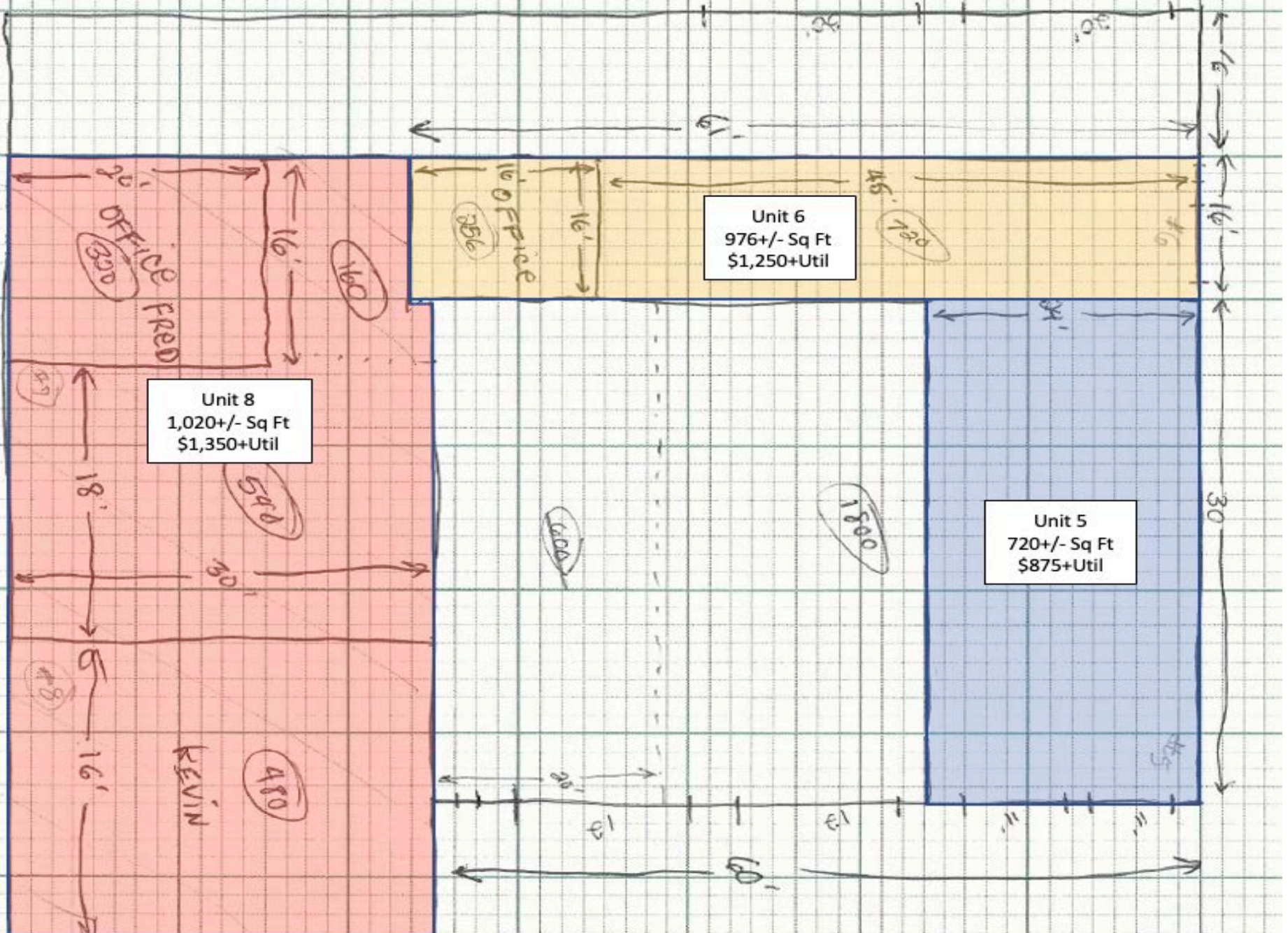
### Price for Lease

Unit 1	720+/- Sq Ft	\$875/Month + Utilities
Unit 2	976+/- Sq Ft	\$1,250/Month + Utilities
Unit 3	1,020+/- Sq Ft	\$1,350/Month + Utilities





# PLAN (not to scale)



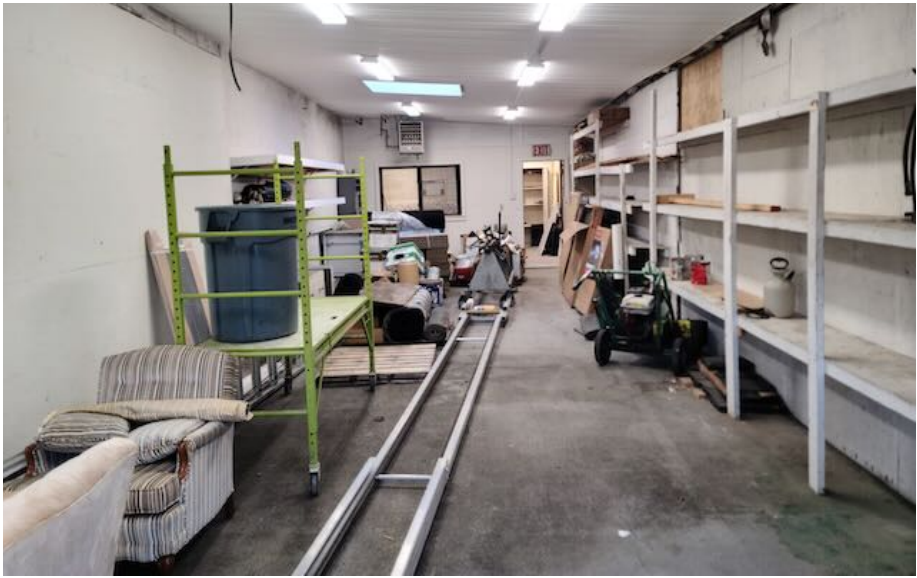


PROPERTY PHOTOS, Unit 5





PROPERTY PHOTOS, Unit 6



PROPERTY PHOTOS, Unit 8







**REAL ESTATE  
SERVICES**

**Kevin Pepe**  
President  
508-862-9000 ext 105  
[kpepe@comrealty.net](mailto:kpepe@comrealty.net)

**Commercial Realty Advisors, Inc.**  
222 West Main Street  
Hyannis, MA 02601  
<https://comrealty.net>