

# 626 Pelham Parkway So.

Corner of Pelham Pkwy So & Bolton St | The Bronx



Over 13,000 SF on 2 Available Floors

# 626 Pelham Parkway So.

Corner of Pelham Pkwy So & Bolton St | The Bronx



**SIZE:**  
 Space A 6,900 SF Ground Floor  
 Space B 5,600 SF Second Floor

**FRONTAGE:** 100'

**CEILING HEIGHT:**  
 Space A 25' Ceiling Height  
 Space B 12' Ceiling Height

**POSSESSION:** Immediate

**TRANSPORTATION:**

**HIGHLIGHTS:**

- Currently Apple Saving's Bank
- Off of White Plains Rd
- Clean open layout
- Owner installing a new elevator
- Perfect for any retail, medical or fitness uses
- Neighbors include:



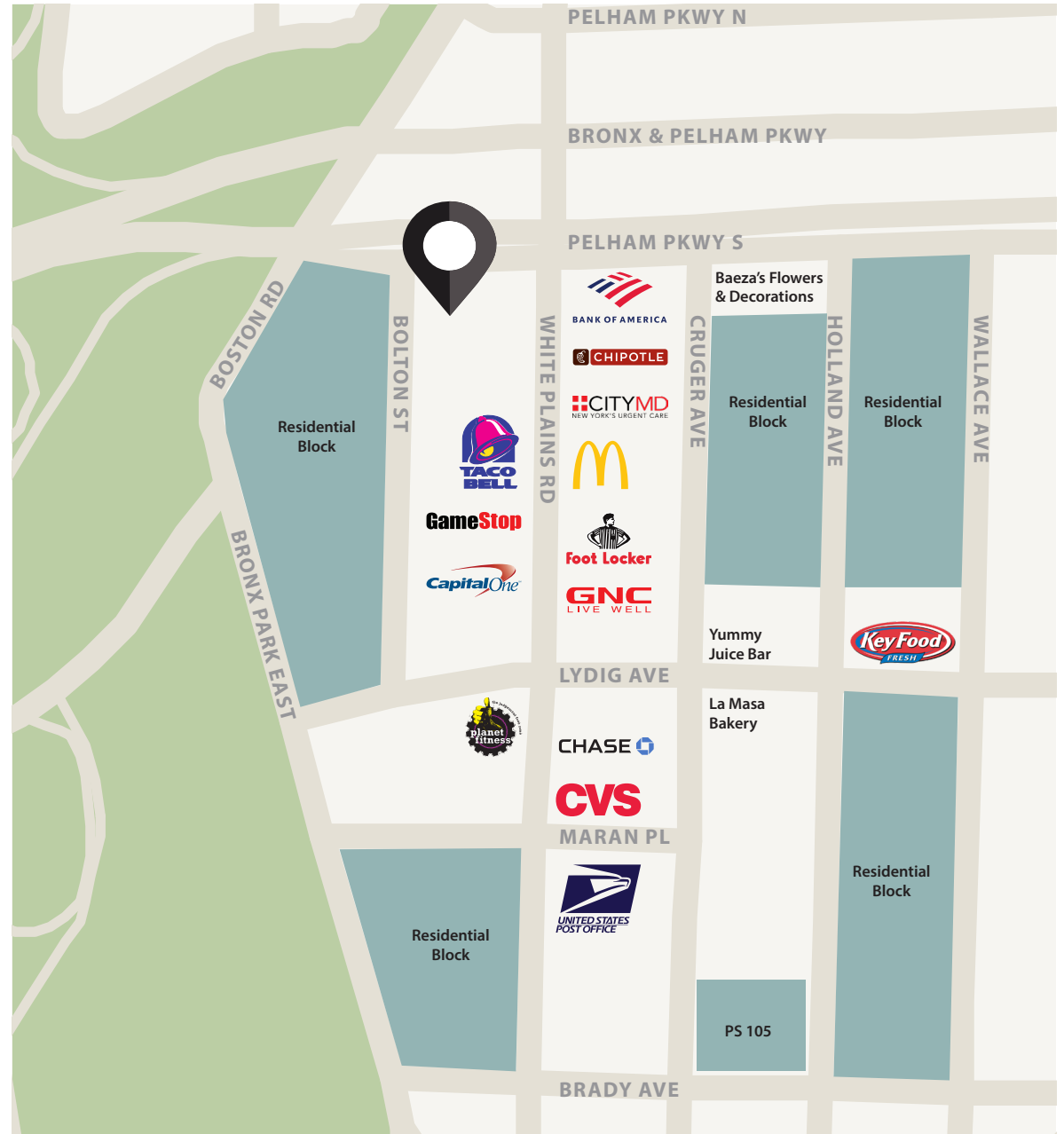
CONTACT OUR BROKERS FOR MORE INFORMATION:

**JACK KHASKI**

JackK@ksrny.com  
 917.355.0559

**ALBERT MANOPLA**

AManopla@ksrny.com  
 212.380.8369

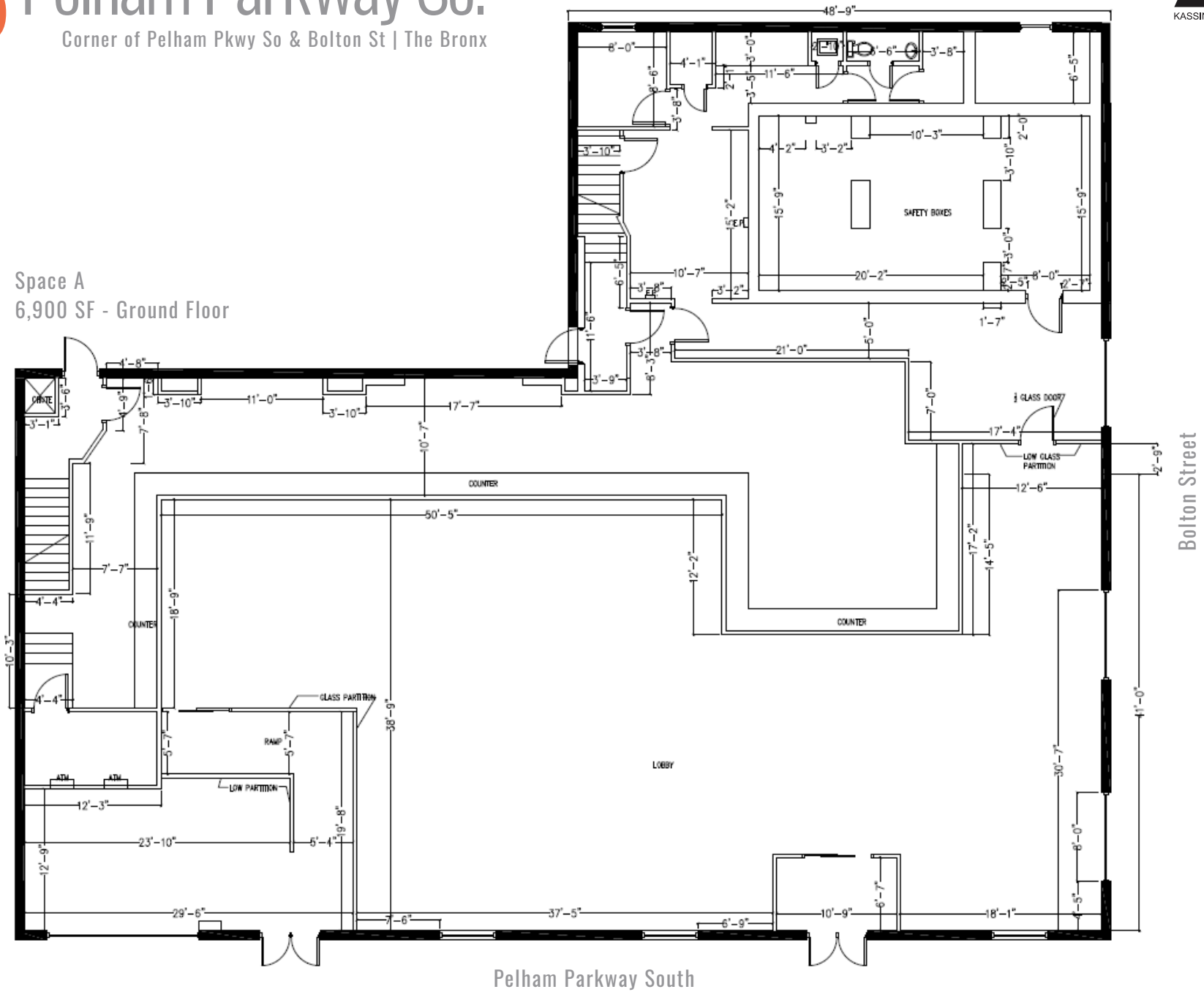


# 626 Pelham Parkway So.

Corner of Pelham Pkwy So & Bolton St | The Bronx



Space A  
6,900 SF - Ground Floor

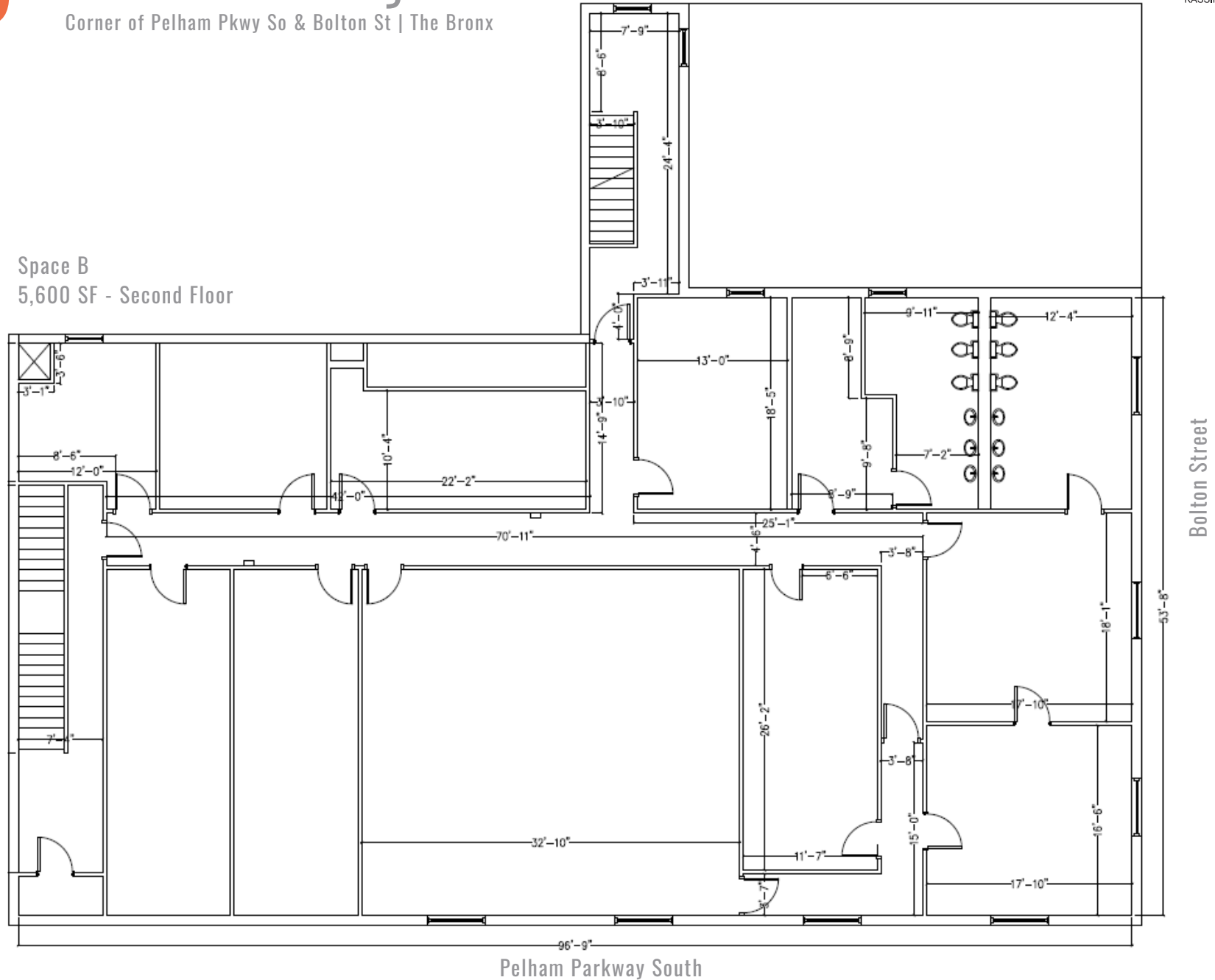


# 626 Pelham Parkway So.

Corner of Pelham Pkwy So & Bolton St | The Bronx



Space B  
5,600 SF - Second Floor



All information supplied in this marketing presentation and/or flyer is from sources deemed reliable and is furnished subject to errors, omissions, modifications, removal of listings from sale/lease and to any listing condition. Any square footage, dimensions, floor plans and/or technical data set forth are approximations and are subject to further elaboration/confirmation.