



REAL  
ESTATE



## 3400 Southpark Place Grove City, OH

Building Size: 409,654 SF | 269,847 SF of Industrial Space Available

VISIT [eqtgroup.com/real-estate](http://eqtgroup.com/real-estate)

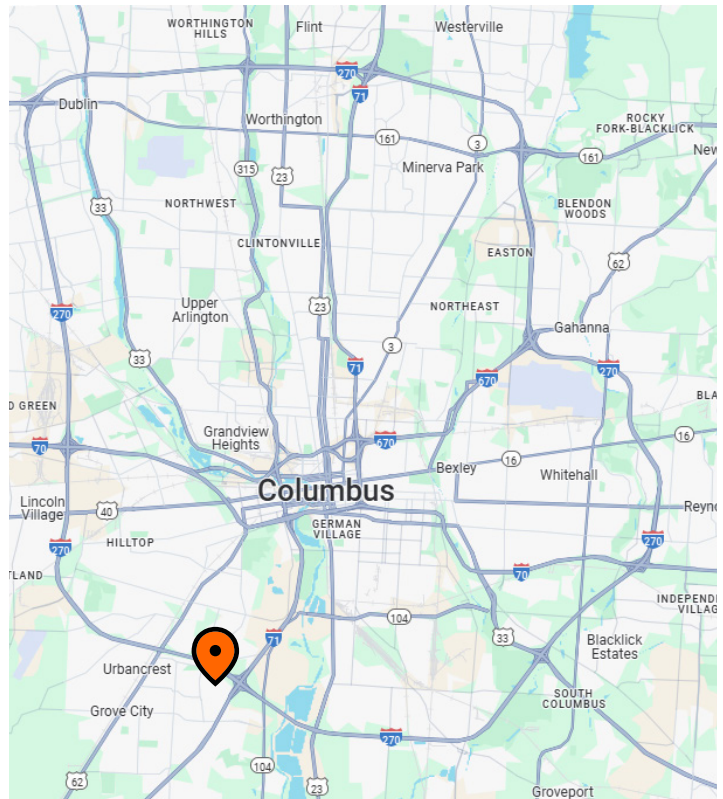
# 3400 Southpark Place Grove City, OH

269,847 SF of Industrial Space Available



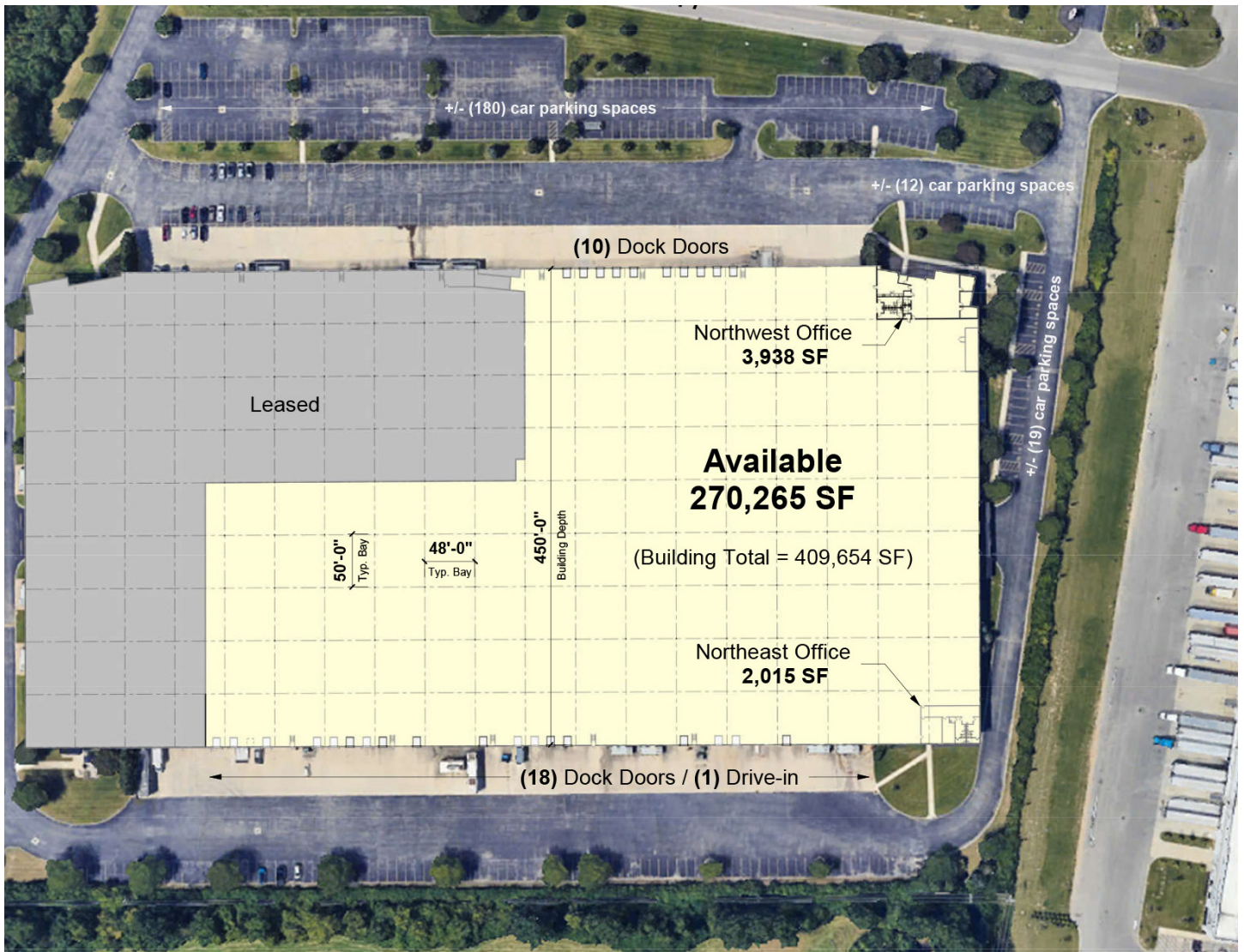
## Property Specifications

- 409,654 SF total building size
- 269,847 SF available size
- Class A warehouse
- +/- 3,938 SF main office
- +/- 2,015 SF shipping receiving office with restrooms
- 28' - 31' clear ceiling height
- 48' x 50' column spacing
- 28 (9' x 10') dock doors with levelers
- 1 (12' x 14') drive-in door
- LED Lighting
- Ample car parking
- Heavy power
- ESFR sprinkler system
- Easy access to I-71, I-270, and I-70
- Minutes from the Port Columbus International Airport
- Public transportation stop at building



# 3400 Southpark Place Grove City, OH

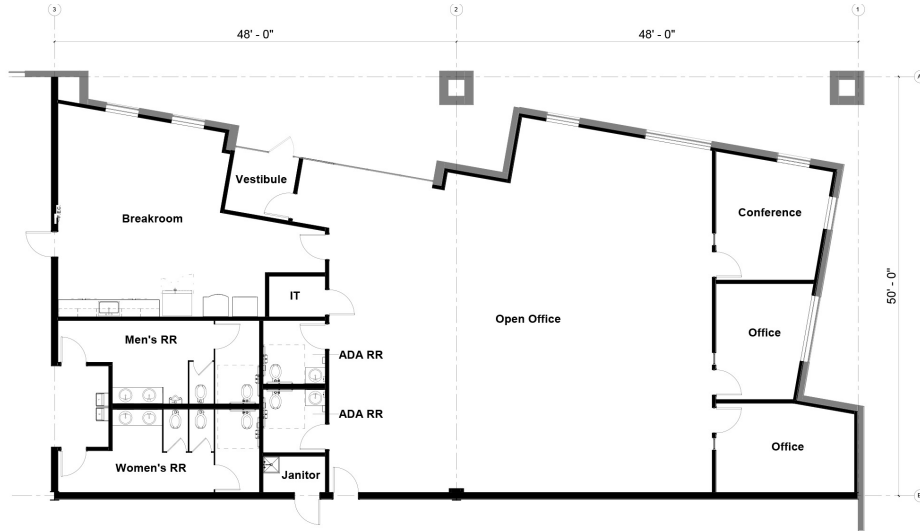
269,847 SF of Industrial Space Available



# 3400 Southpark Place Grove City, OH

269,847 SF of Industrial Space Available

## Main Office Floor Plan (Northwest) 3,938 SF



## Shipping/Receiving Office Floor Plan (Northeast) 2,015 SF

