

Palm Plaza | 141 E Palm Ln, Phoenix, AZ 85004

\$19 SF/yr (FSG) | Multiple Suites For Lease



Don Morrow
Senior Vice President
don.morrow@naihorizon.com
(C) 602 393 6608

Dylan Whitwer
First Vice President
dylan.whitwer@naihorizon.com
(C) 623 556 6455

NAIHorizon

All information furnished regarding property for sale, rental or financing is from sources deemed reliable, but no warranty or representation is made to the accuracy thereof and same is submitted subject to errors, omissions, change of price, rental or other conditions prior to sale, lease or financing or withdrawal without notice. No liability of any kind is to be imposed on the broker herein.

2944 N 44th St, Suite 200, Phoenix, AZ 85018
602 955 4000 | naihorizon.com

Palm Plaza | 141 E Palm Ln

\$19 SF/yr (FSG) For Lease



FEATURES

- Patio Areas Overlooking Downtown Phoenix
- Situated On SW Corner Of Signalized Intersection
- Beautiful Architect With Copper
- Colored Accents
- Move-In Ready Suites Available
- 4:1 Parking With Covered Parking Available
- Central Mid-Town Location



Don Morrow
Senior Vice President
don.morrow@naihorizon.com
(C) 602 393 6608

Dylan Whitwer
First Vice President
dylan.whitwer@naihorizon.com
(C) 623 556 6455

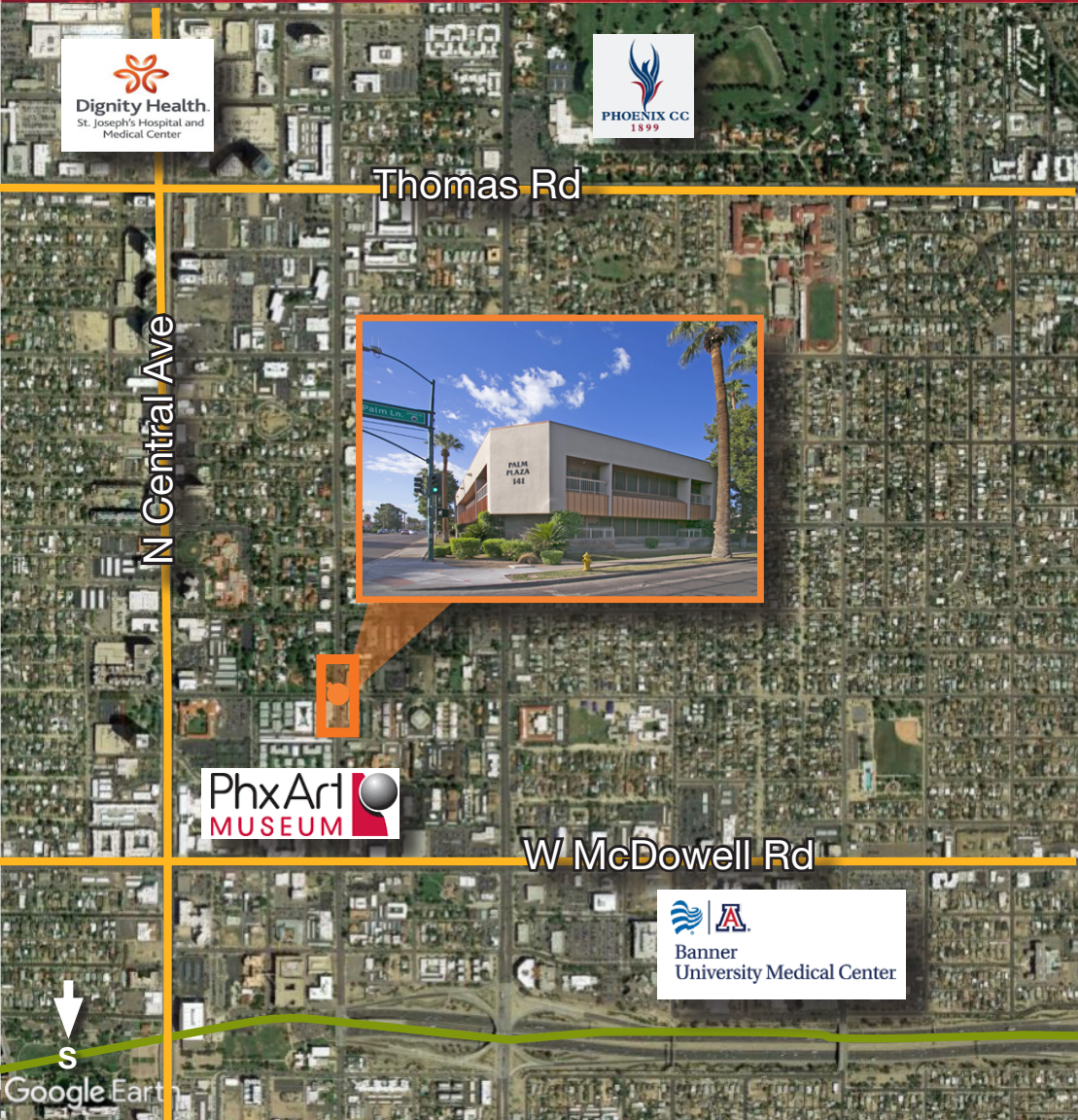
NAIHorizon

2944 N 44th St, Suite 200, Phoenix, AZ 85018
602 955 4000 | naihorizon.com

All information furnished regarding property for sale, rental or financing is from sources deemed reliable, but no warranty or representation is made to the accuracy thereof and same is submitted subject to errors, omissions, change of price, rental or other conditions prior to sale, lease or financing or withdrawal without notice. No liability of any kind is to be imposed on the broker herein

Palm Plaza | 141 E Palm Ln

\$19 SF/yr (FSG) For Lease



Don Morrow
Senior Vice President
don.morrow@naihhorizon.com
(C) 602 393 6608

Dylan Whitwer
First Vice President
dylan.whitwer@naihORIZON.com
(C) 623 556 6455

All information furnished regarding property for sale, rental or financing is from sources deemed reliable, but no warranty or representation is made to the accuracy thereof and same is submitted subject to errors, omissions, change of price, rental or other conditions prior to sale, lease or financing or withdrawal without notice. No liability of any kind is to be imposed on the broker herein



2944 N 44th St, Suite 200, Phoenix, AZ 85018
602 955 4000 | naihorizon.com