



Grant - Murray

REAL ESTATE, LLC

COMMERCIAL AND INVESTMENT BROKERAGE

150 N. McPherson Church Rd

Fayetteville, NC 28303

[www.grantmurrayre.com](http://www.grantmurrayre.com)



RETAIL PROPERTY FOR LEASE

219 HAY ST  
Fayetteville, NC 28301

*for more information*

SUSAN EVANS

Broker

O: 910.829.1617 x208

C: 919.920.2140

[susan@grantmurrayre.com](mailto:susan@grantmurrayre.com)



**EXECUTIVE SUMMARY**



**OFFERING SUMMARY**

<b>Available SF:</b>	4,000 SF
<b>Lease Rate:</b>	\$3,400.00 per month (MG)
<b>Lot Size:</b>	0.1 Acres
<b>Year Built:</b>	1930
<b>Building Size:</b>	8,646
<b>Renovated:</b>	2022
<b>Zoning:</b>	DT-1
<b>Market:</b>	Fayetteville
<b>Submarket:</b>	Downtown Fayetteville

**PROPERTY OVERVIEW**

This second-floor suite in Downtown Fayetteville provides a spacious commercial space of around 4,200 square feet. It includes private offices, open areas, a kitchen, and accessible restrooms. The interior features modern touches like new hardwood floors, glass offices, and brick walls. Updated facilities, such as modern restrooms and a kitchen, add functionality. The suite offers a nice view of downtown Fayetteville through large windows and is conveniently located above Pierro's Italian Restaurant. With a mix of style, practicality, and a prime location, it's an appealing option for businesses looking for a dynamic workspace.

**LOCATION OVERVIEW**

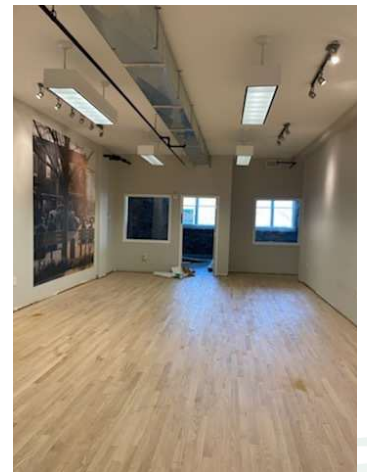
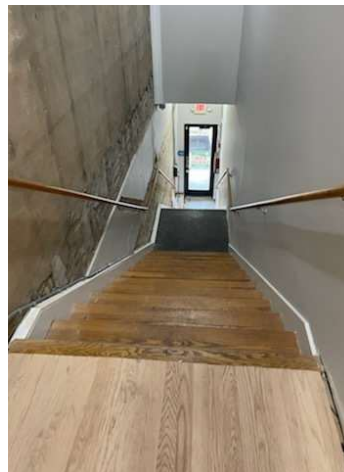
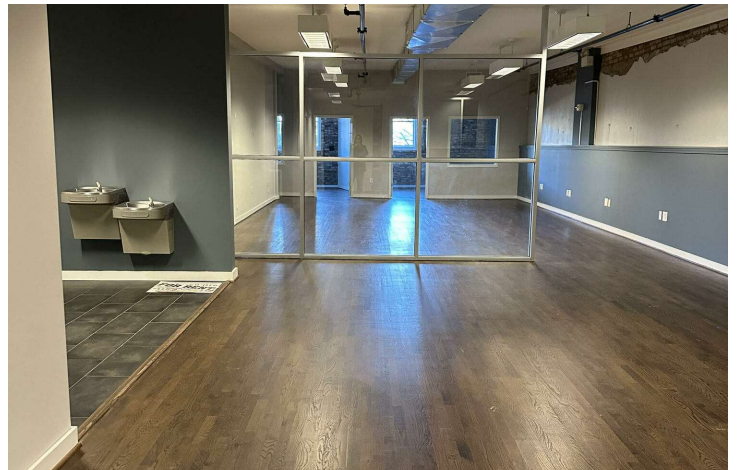
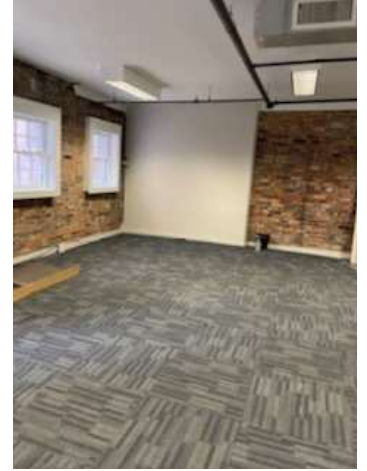
This commercial building is located on Hay St in the beautiful historic district of Downtown Fayetteville. Downtown Fayetteville is centrally located within the Fayetteville MSA making it easily accessible to the region and a 10-15 minute drive from the Fort Bragg gates. Within walking distance of the building are numerous restaurants, retailers, and the new Segra baseball stadium.

*for more information*

**SUSAN EVANS**  
 Broker  
 O: 910.829.1617 x208  
 C: 919.920.2140  
 susan@grantmurrayre.com



ADDITIONAL PHOTOS



*for more information*

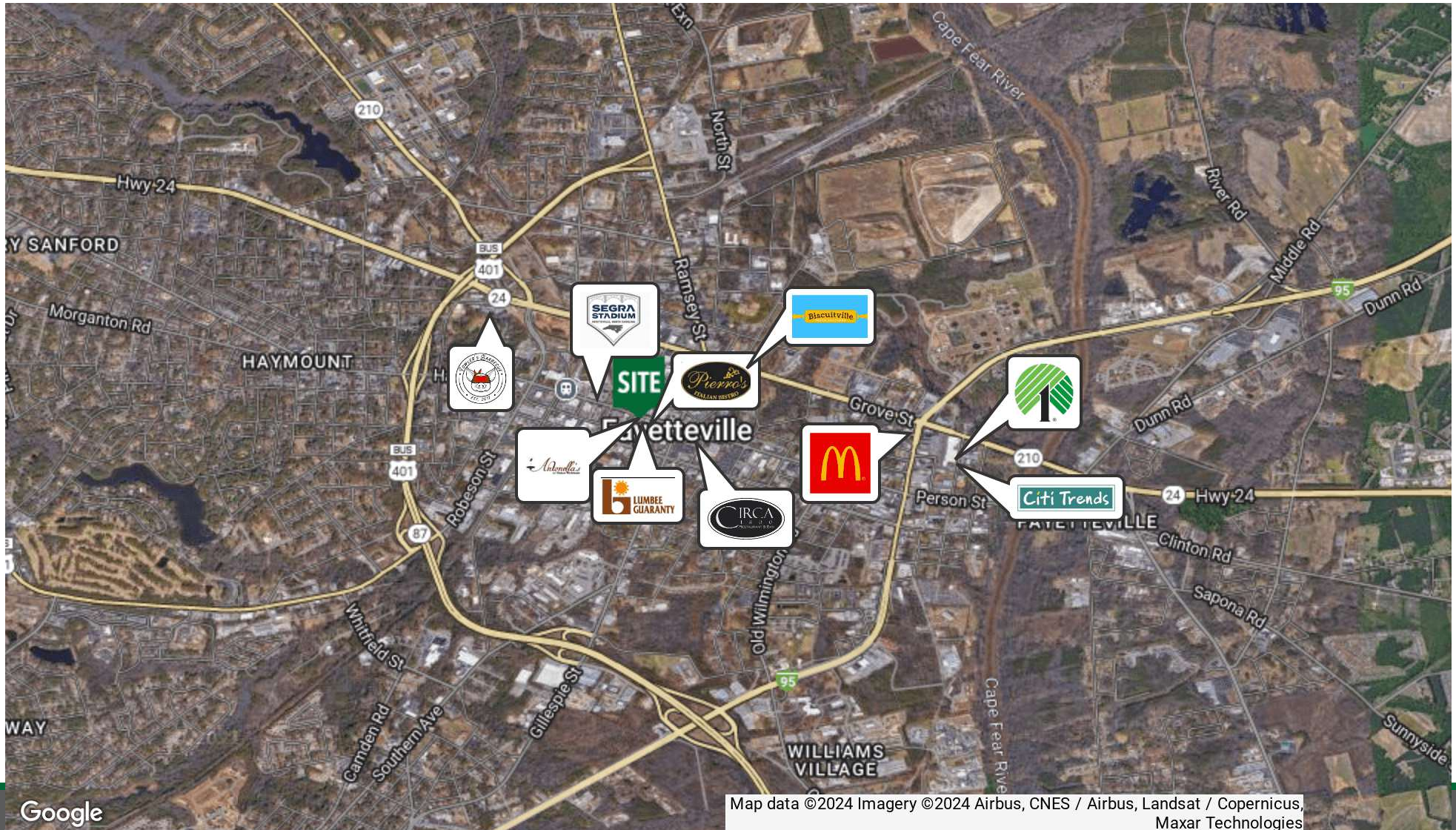
SUSAN EVANS

Broker

O: 910.829.1617 x208

C: 919.920.2140

[susan@grantmurrayre.com](mailto:susan@grantmurrayre.com)



Map data ©2024 Imagery ©2024 Airbus, CNES / Airbus, Landsat / Copernicus, Maxar Technologies

Google

Broker  
O: 910.829.1617 x208  
C: 919.920.2140  
susan@grantmurrayre.com



Grant - Murray  
REAL ESTATE, LLC  
COMMERCIAL AND INVESTMENT BROKERAGE