

For Lease

# Plumas Commons



LOGIC



1895 Plumas St.  
Reno, NV 89509

**Michael Keating, SIOR**  
Partner  
775.386.9727  
mkeating@logicCRE.com  
S.0174942

**Michael Dorn**  
Senior Associate  
775.453.4436  
mdorn@logicCRE.com  
S.0189635

## Listing Snapshot



**\$2.05 - \$2.25 PSF NNN**

Lease Rate



**± 1,520 - 1,750 SF**

Available Square Footage

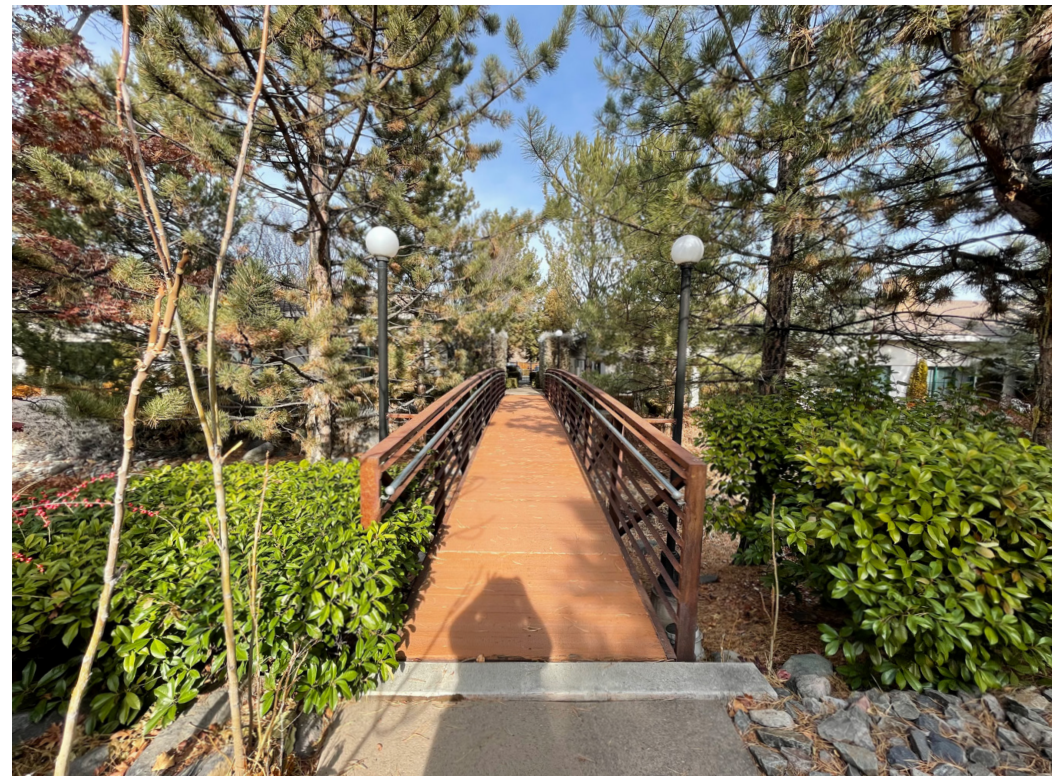
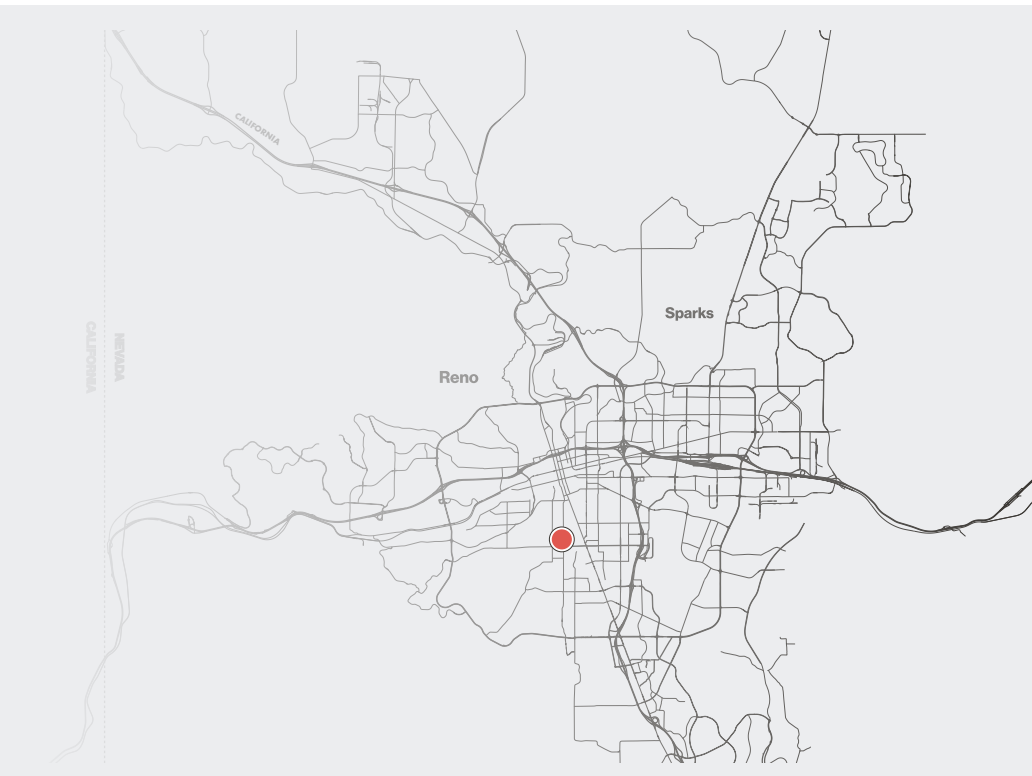


**\$0.47 PSF NNN**

Estimated Lease Expense

## Property Highlights

- Property is located in central Reno with nearby access to MidTown and Downtown districts
- Situated on the corner of Plumas St. and Plumb Ln. with a combined ± 33,700 CPD
- Turn-key office suites with multiple sizes and configurations available
- 4.67 per 1,000 parking ratio
- Large central courtyard with multiple seating areas

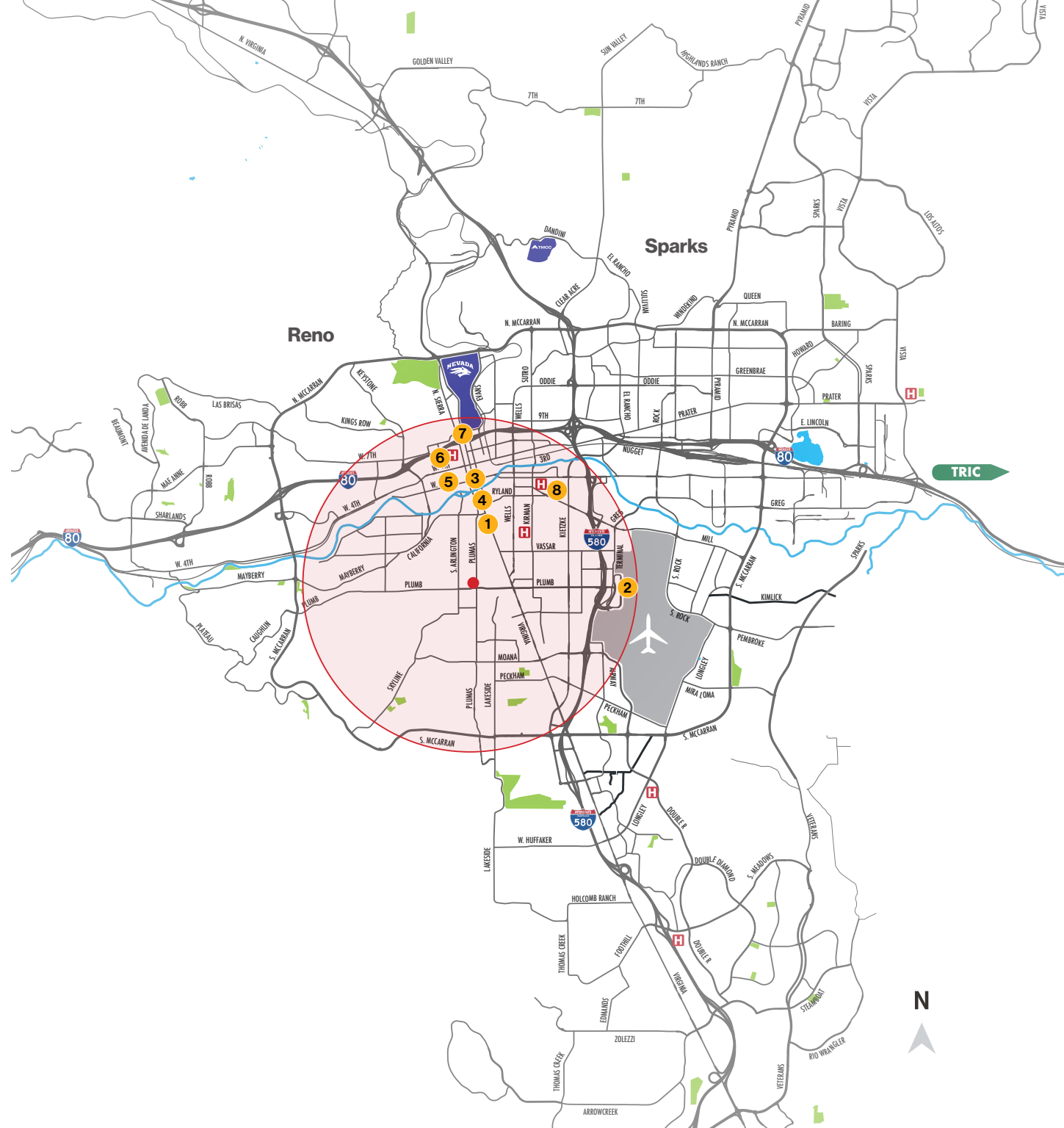


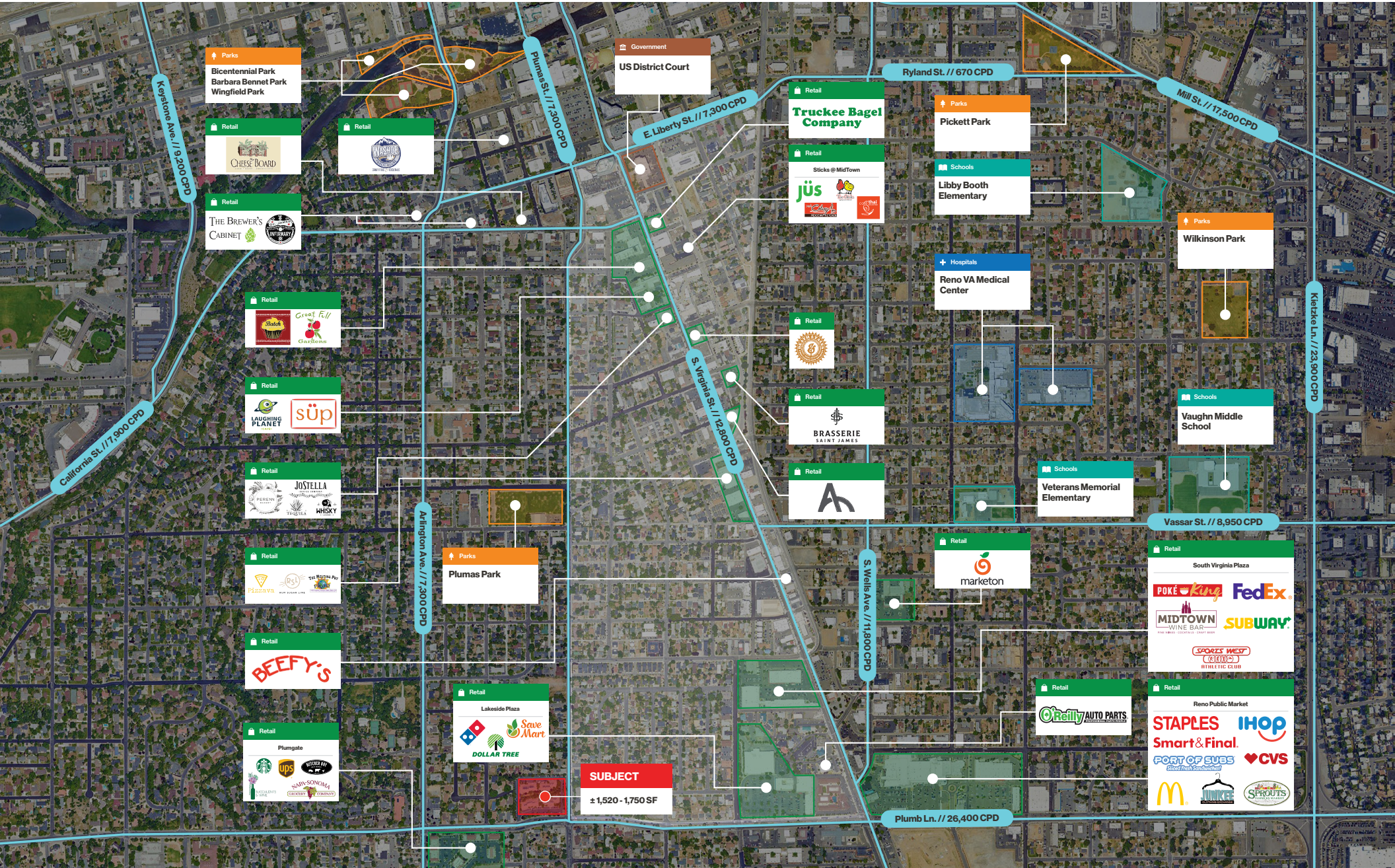
# Vicinity Map

Plumas Commons is situated in central Reno with nearby access to downtown, MidTown, major highways, Renown Regional Medical Center, and the new Reno Experience District. Dense housing nearby provides strong income demographics in the surrounding region.

## Amenities within a 3-mile radius


- 1
**MidTown**  
 - 0.8 miles
- 2
**Reno-Tahoe International Airport**  
 - 1.2 miles
- 3
**City of Reno Municipal Court**  
 - 1.4 miles
- 4
**Reno City Hall**  
 - 1.5 miles
- 5
**Downtown Reno**  
 - 1.8 miles
- 6
**Saint Mary's Regional Medical Center**  
 - 2.0 miles
- 7
**University of Nevada, Reno**  
 - 2.2 miles
- 8
**Renown Regional Medical Center**  
 - 2.3 miles







 Government  
**City of Reno Municipal Court**

 Hospitals  
**Renown Regional Medical Center**

**Downtown Reno**

**Midtown**

**Lander St.**

**SUBJECT**  
**± 1,520 - 1,750 SF**

**Plumas St. // 7,300 CPD**

**Plumb Ln. // 26,400 CPD**

# Site Plan

Available Leased



# Floor Plan

## Building 1855 | Suite 2



**\$2.25 PSF**

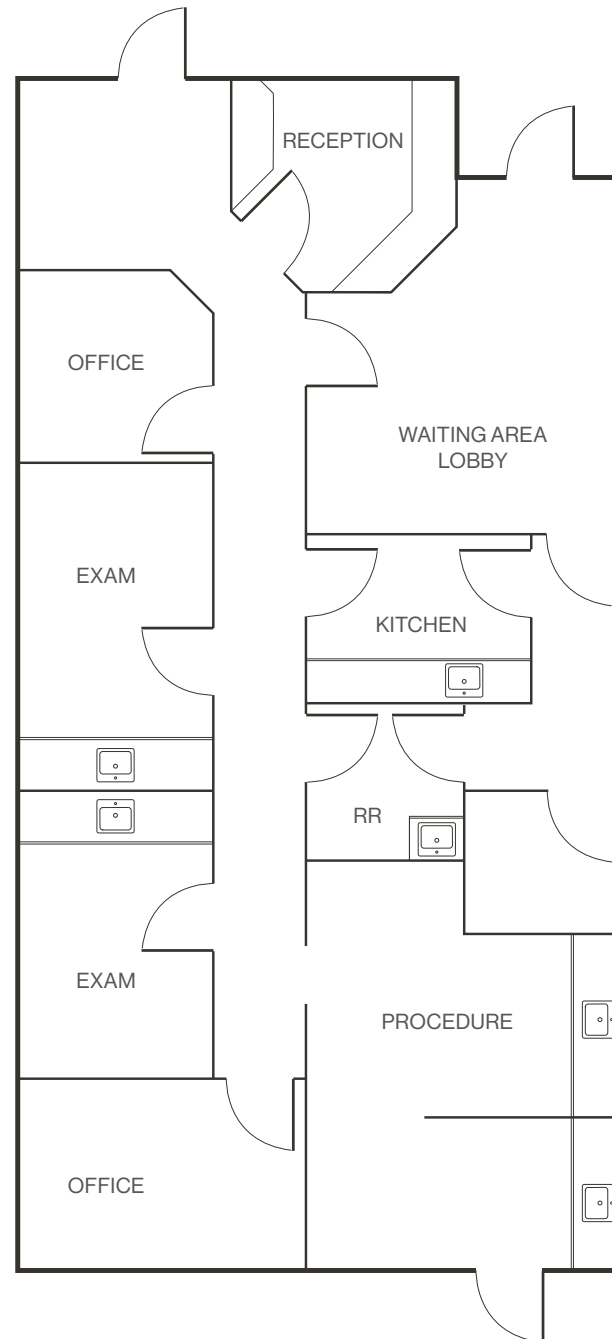
Lease Rate



**± 1,750 SF**

Available Square Footage

- Turn-key full medical build out
- Large open reception area
- Private admin office
- Three (3) large treatment areas
- Class A finishes throughout



# Floor Plan

## Building 1875 | Suite 4



**\$2.15 PSF**

Lease Rate

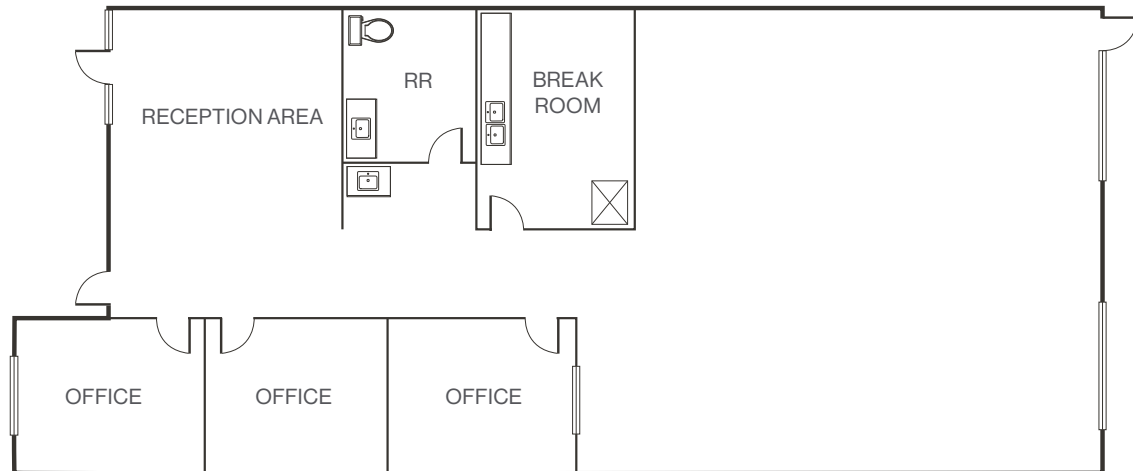


**± 1,520 SF**

Available Square Footage

- Reception area
- Three (3) private offices
- Break room with laundry
- Private restroom

[Click for a Virtual Tour](#) 





# Floor Plan

## Building 1895 | Suite 3



**\$2.05 PSF**

Lease Rate

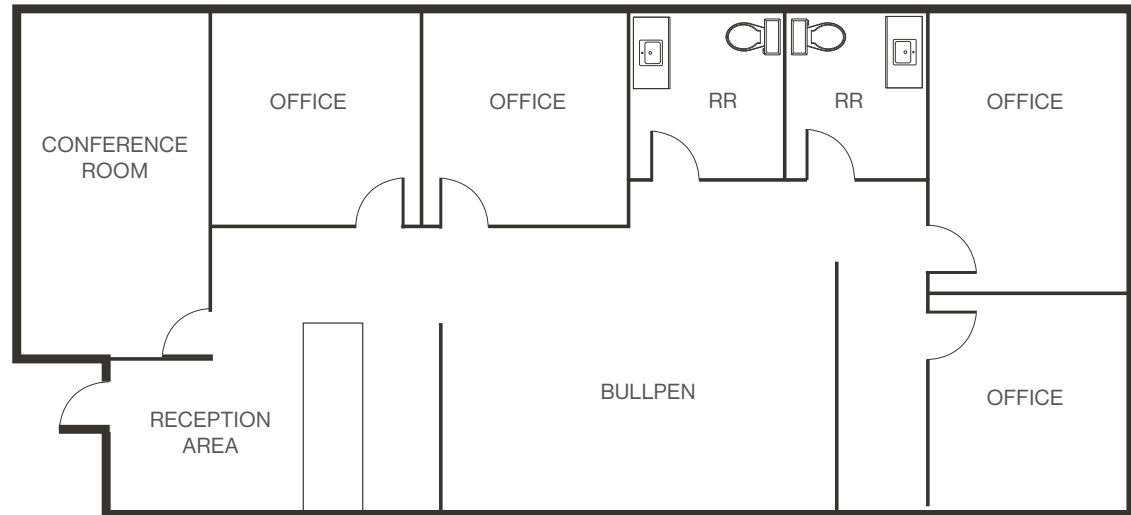


**± 1,540 SF**

Available Square Footage

- Four (4) private offices
- Two (2) private restrooms
- Conference room
- Open reception

[Click for a Virtual Tour](#) 



Property Photos



# LOGIC Commercial Real Estate

## Specializing in Brokerage and Receivership Services



Join our email list and  
connect with us on LinkedIn

The information herein was obtained from sources deemed reliable; however LOGIC Commercial Real Estate makes no guarantees, warranties or representation as to the completeness or accuracy thereof.

For inquiries please reach out to our team.

**Michael Keating, SIOR**

Partner  
775.386.9727  
mkeating@logicCRE.com  
S.0174942

**Michael Dorn**

Senior Associate  
775.453.4436  
mdorn@logicCRE.com  
S.0189635