

Bakery Square

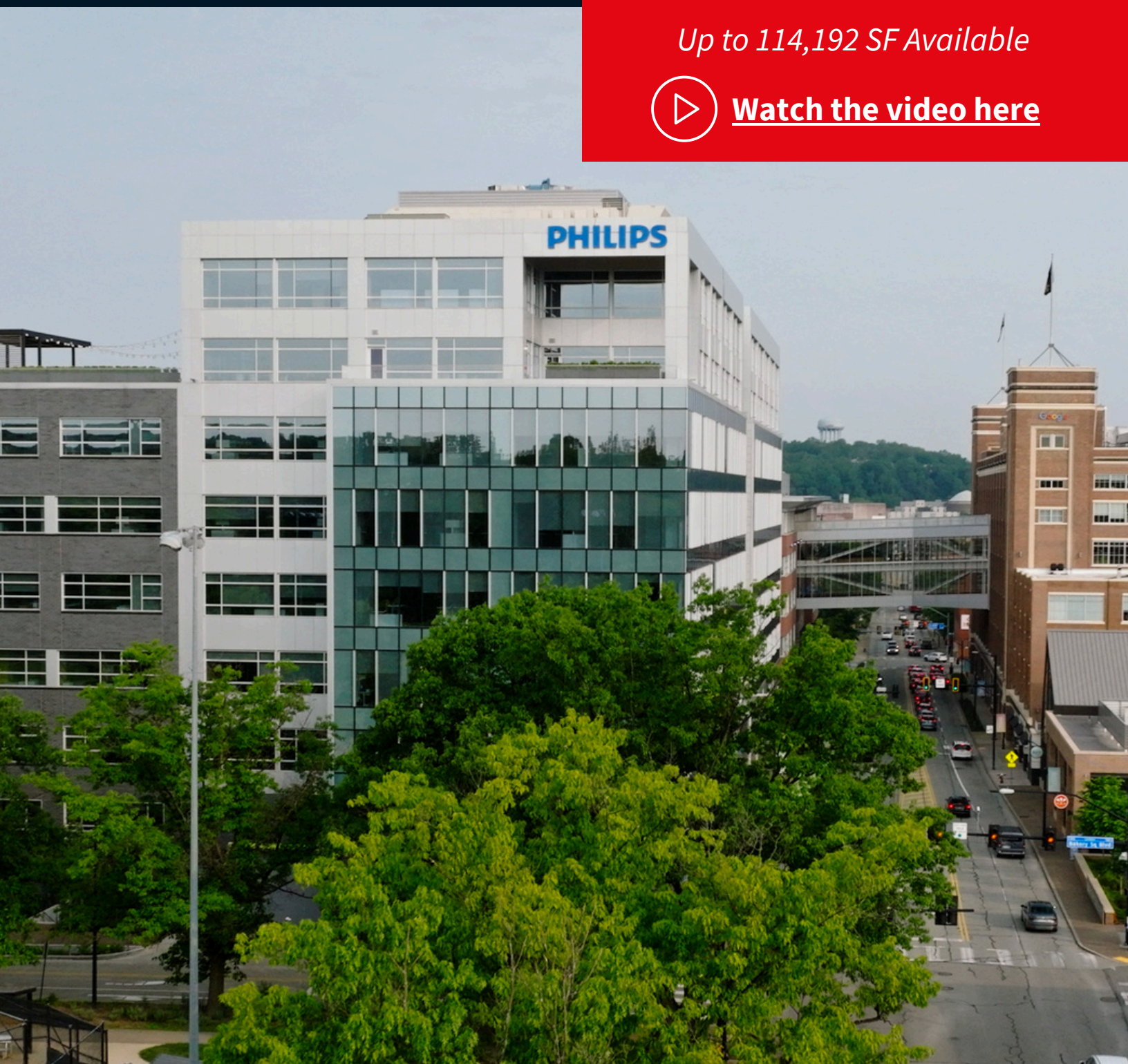
Bakery Office Three | Pittsburgh, PA

Premier Sublease Opportunity

Up to 114,192 SF Available



[Watch the video here](#)



Property Highlights

Bakery Office Three | 6501 Living Place



Multiple floors

available for sublease
Term through 11/30/2035



Fitness center

located in the
building



Access to
Conference center
([Conference Ctr Tour](#))



Free Parking

2.5 / 1,000



Fully furnished

Haworth office
systems



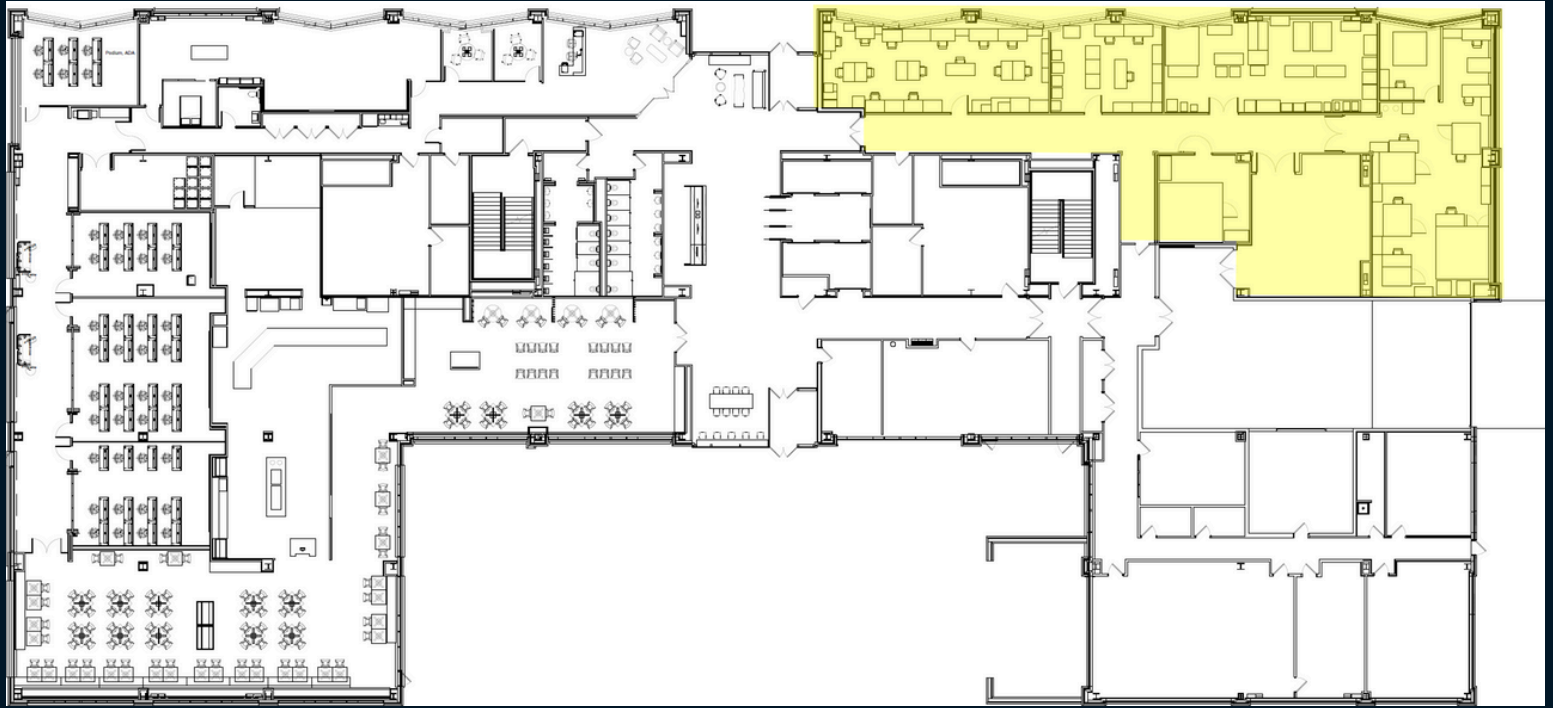
Private **rooftop
terrace**



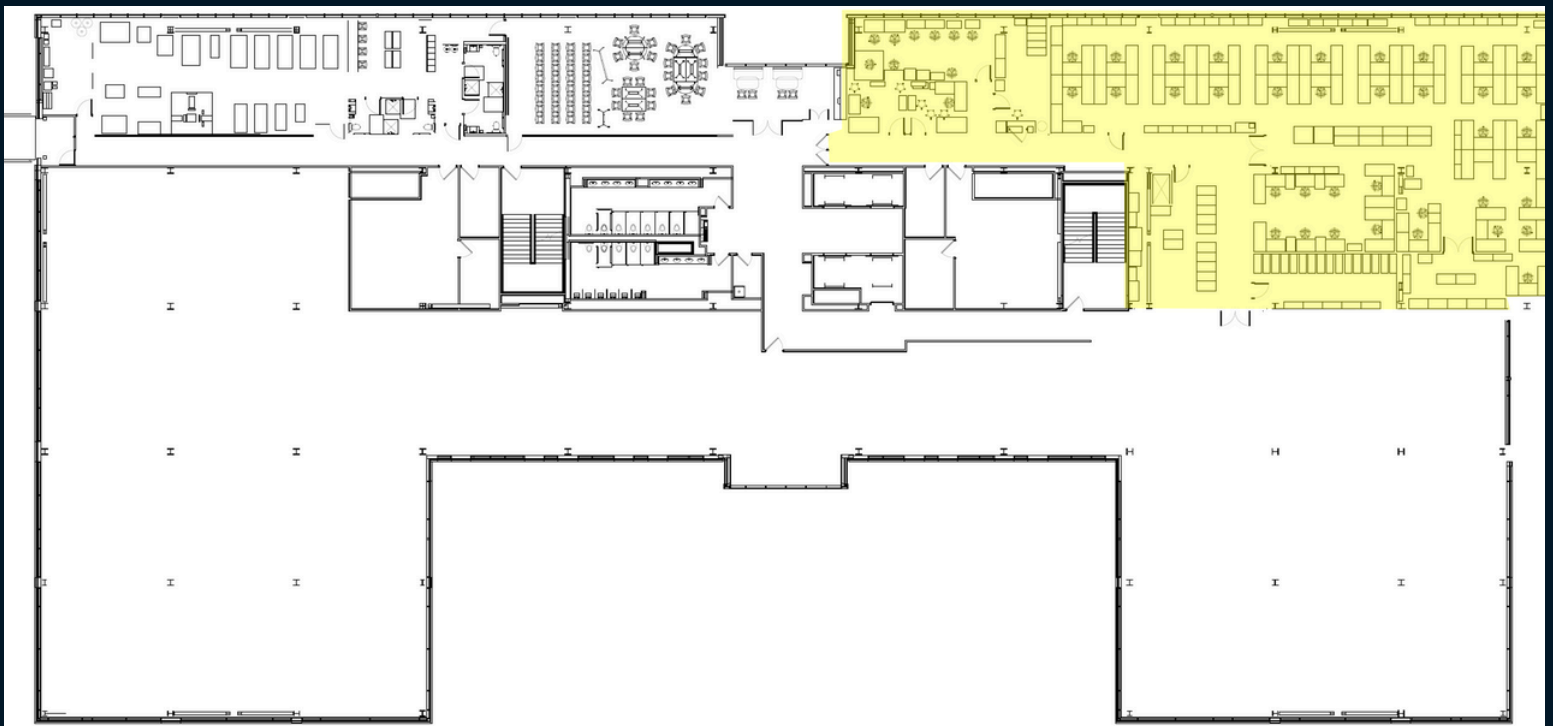
Floor	Size	Asking Rate	Condition
1	7,334 RSF	\$30.00/SF + electric	Lab
4	8,798 RSF	\$30.00/SF + electric	Lab
6	37,082 RSF	\$30.00/SF + electric	Fully furnished office
8	30,489 RSF	\$30.00/SF + electric	Fully furnished office
9	30,489 RSF	\$30.00/SF + electric	Fully furnished office

Floor Plans

1st floor | 7,334 RSF
As-built plan



4th floor | 8,798 RSF
As-built plan

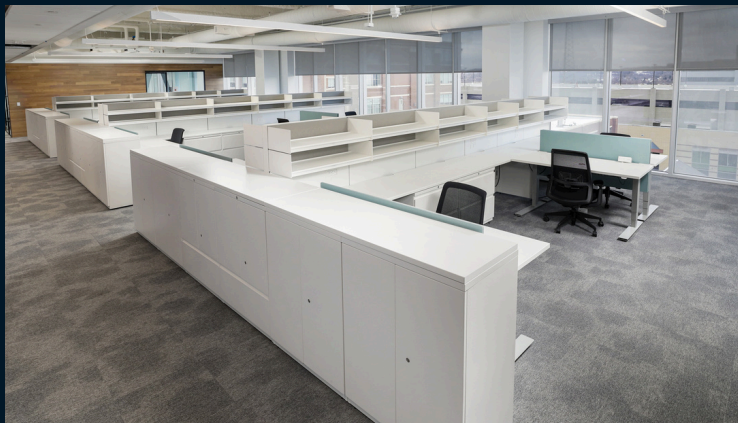
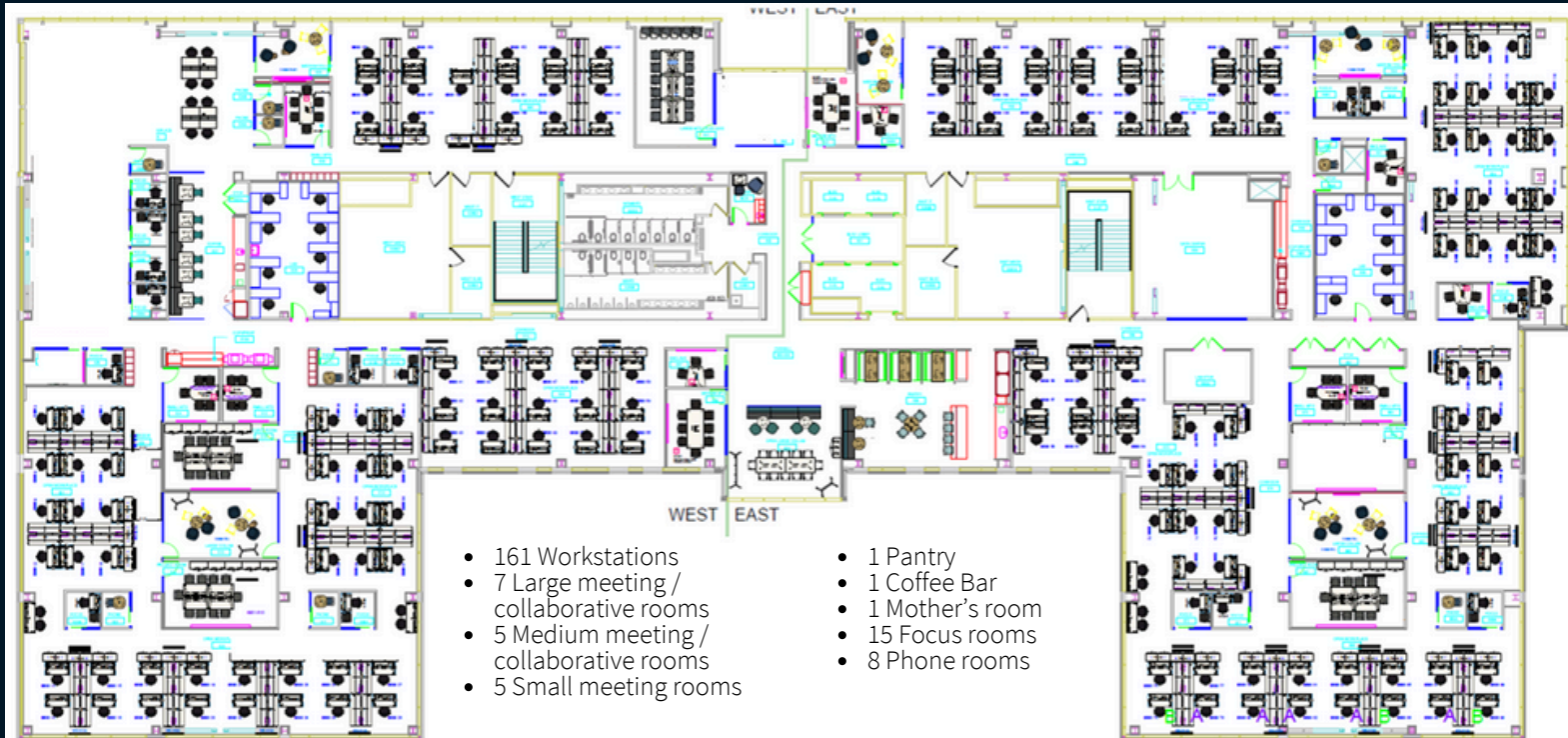


[Click Here to see all floor plans](#)

Floor Plans

6th floor | 37,082 RSF
As-built plan

 [Click for self-guided tour](#)

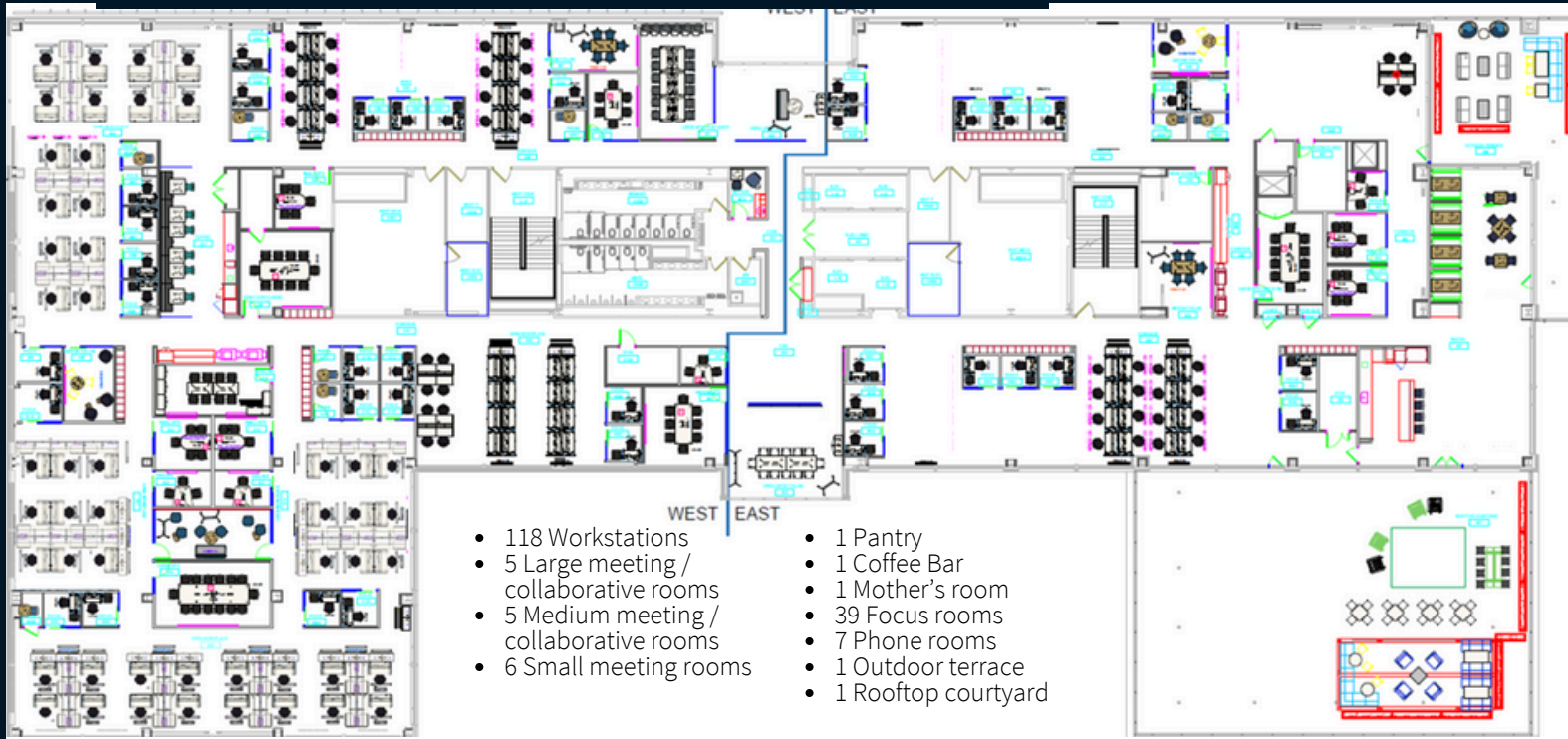


[Click Here to see all floor plans](#)

Floor Plans

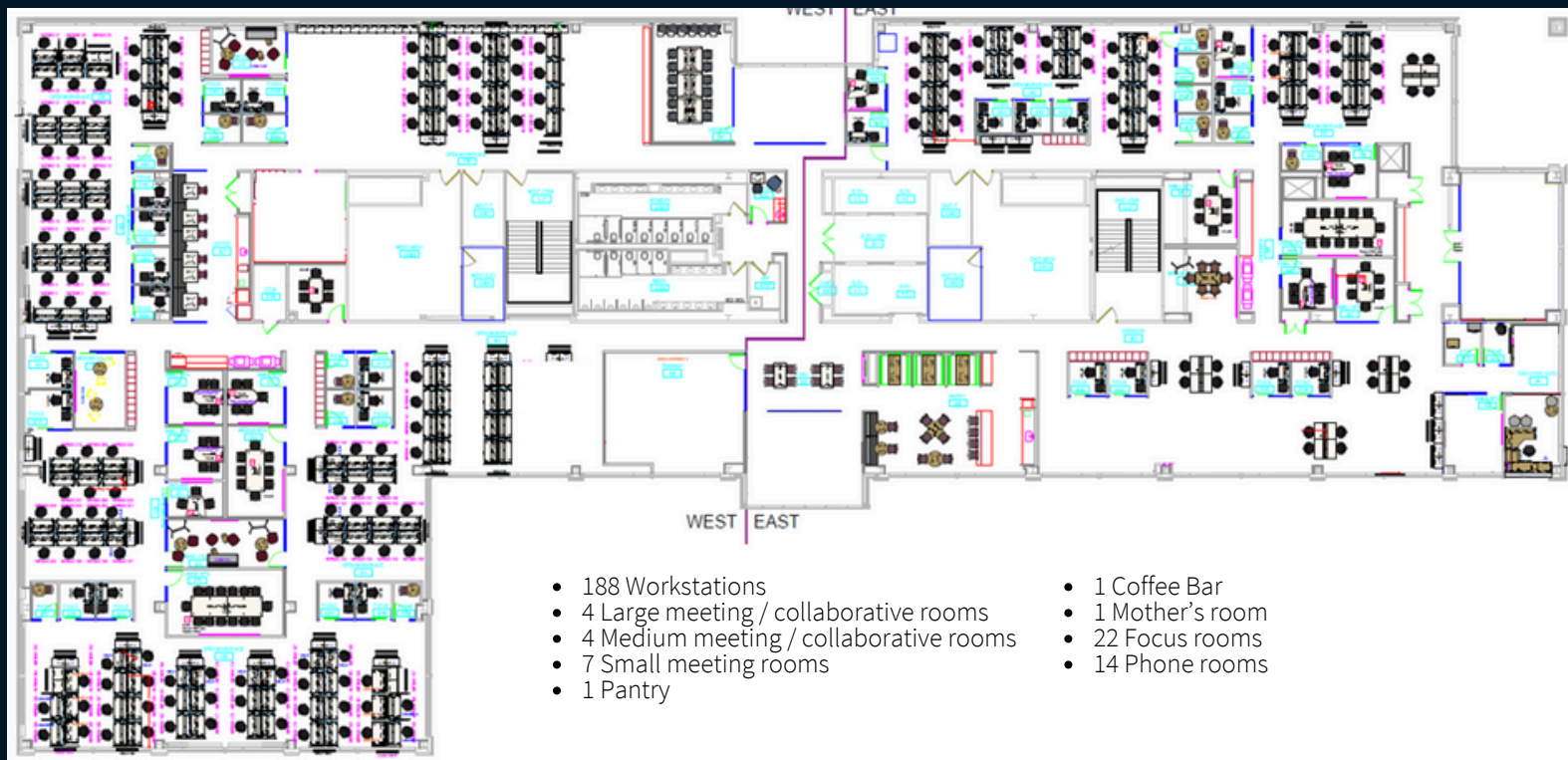
8th floor | 30,489 RSF

As-built plan



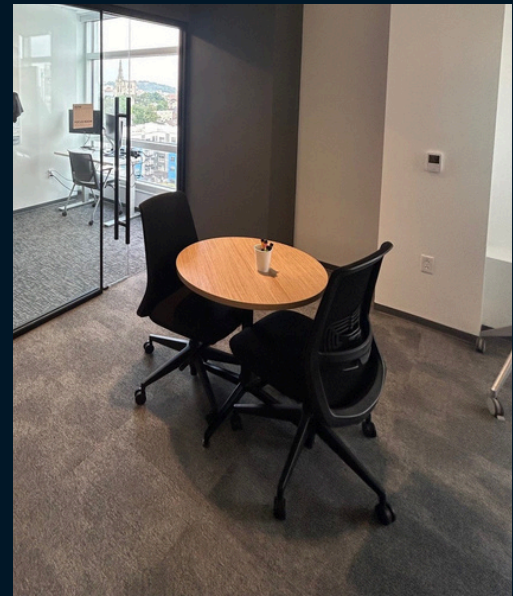
9th floor | 30,489 RSF

As-built plan



[Click Here to see all floor plans](#)

8th Floor



9th Floor



Amenities

Bakery Office Three | 6501 Living Place



Bakery Square Amenities

RETAIL AND SHOPPING

- 1 Target
- 2 Giant Eagle
- 3 Trader Joe's
- 4 Staples
- 5 Free People
- 6 Anthropologie
- 7 BHLDN Bridal
- 8 West Elm

FOOD AND DRINK

- 9 BrewDog Pittsburgh
- 10 McDonald's
- 11 China Garden
- 12 China Buffet
- 13 Nrgize Juice
- 14 Jimmy John's
- 15 Alta Via Pizzeria
- 16 Galley Bakery Square
- 17 Panera
- 18 Tako Torta
- 19 Starbucks

MISCELLANEOUS

- 20 LA Fitness
- 21 SpringHill Suites
- 22 East Liberty Garage

ADDITIONAL LOCATION HIGHLIGHTS

- Hotel Indigo Pittsburgh (East Liberty) - 0.6 miles
- The Inn on Negley - 0.9 miles
- Hyatt House - 1.2 miles
- Carnegie Mellon University - 2 miles
- University of Pittsburgh - 2.8 miles
- Duquesne University - 4.7 miles

Contact:

Nick Francic
+1 412 208 1400
nick.francic@jll.com

Mike Nelson
+1 412 208 1400
mike.nelson@jll.com

