

145-147

W 27th Street

Prime Chelsea Retail Space For Sale

Asking Price: \$3,200,000

ADDRESS	145 - 147 West 27 th Street
LOCATION	Chelsea
BLOCK/LOT	803 / 1201
STORIES	2 Ground Floor Spaces + Basement
GROSS SQ. FT.	4,755
ZONING	M1-6
MAINTENANCE	\$1,900/month in the aggregate
R.E. TAXES	\$119,502
CEILING HEIGHT	10.5 ft
PROPERTY TYPE	Condo





Contents

BUILDING INFORMATION.....	3
PROPERTY HIGHLIGHTS.....	3
PROPERTY DETAILS.....	4
PHOTOS.....	5
145 W 27 th STREET FLOORPLAN	8
147 W 27 th STREET FLOORPLAN	13
MAP	14
NEIGHBORHOOD.....	15
CONTACT US.....	16

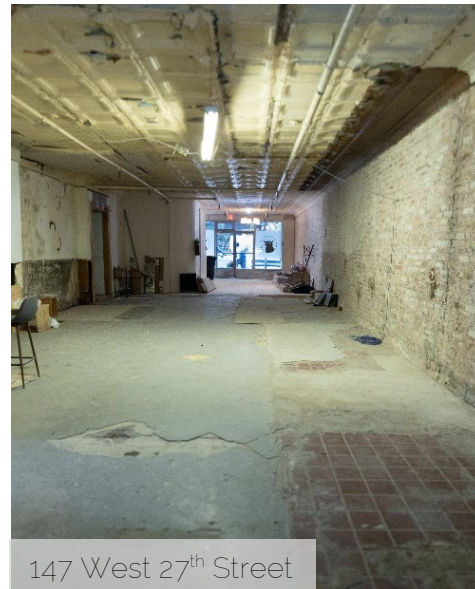


145 - 147 West 27th Street

BUILDING INFORMATION



145 West 27th Street



147 West 27th Street

ASKING PRICE \$3,200,000

ADDRESS	145 - 147 West 27 th Street
LOCATION	Chelsea
BLOCK/LOT	803 / 1201
STORIES	2 Ground Floor Spaces + Basement
GROSS SQ. FT.	4,755
ZONING	M1-6
MAINTENANCE	\$1,900/month in the aggregate
R.E. TAXES	\$119,502
CEILING HEIGHT	10.5 ft
PROPERTY TYPE	Condo

PROPERTY HIGHLIGHTS



Prime Chelsea retail space



Low maintenance



Ideal for user-owner or investor



145 - 147 West 27th Street

PROPERTY DETAILS

- Entire ground floor is being offered – prime Chelsea retail space.
- 4,755 sq. ft. with the aggregate together with a 1,043 sq. ft. basement at 147 W 27th floor.
- Located between Sixth and Seventh avenues.
- Washrooms available on each side.
- Entire floor delivered vacant and may be used as full floor or subdivided.
- Ideal for user-owner or investor.
- Low maintenance.
- 145 is in move-in condition including HVAC and electric.
147 is offered "as is" and is allowing for entire remodeling to accommodate the buyer's needs.
- Easy access to FIT and Penn Station and surrounded by convenient shops, restaurants, groceries stores, and all major transportation.
- Located in a boutique condominium building in the heart of Chelsea, within distance from Flatiron, NoMad, the High Line, and the Meat Packing District.
- Asking \$3,200,000 for the entire floor.



145 West 27th Street

PHOTOS

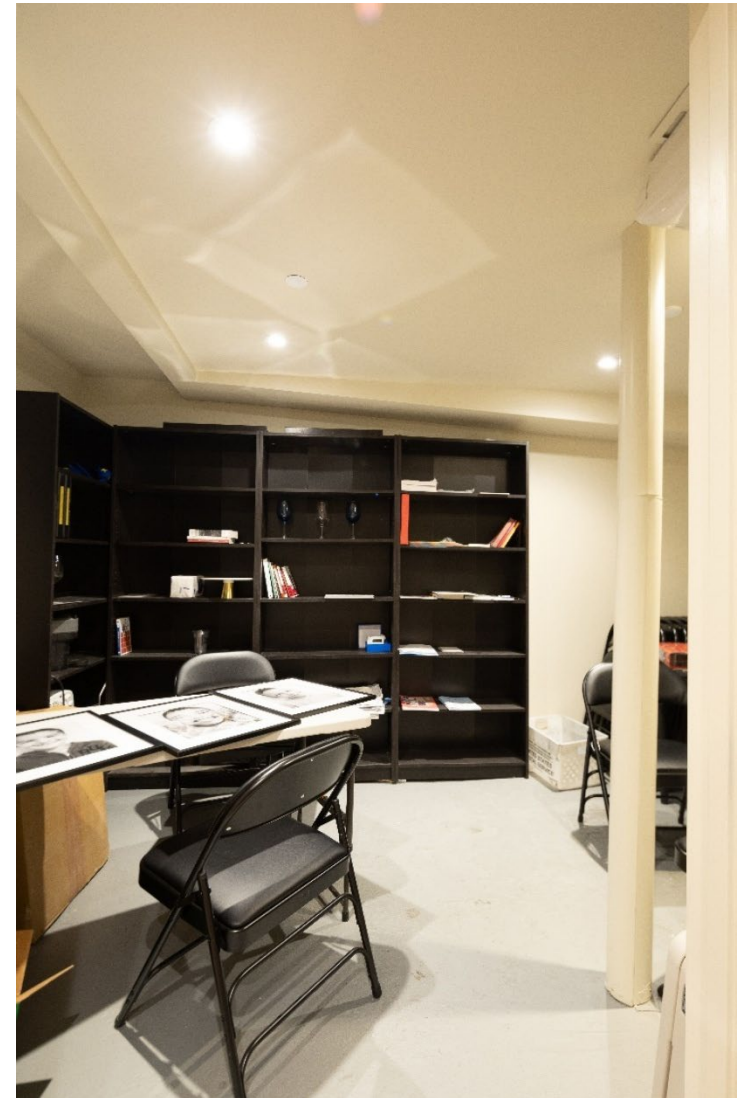


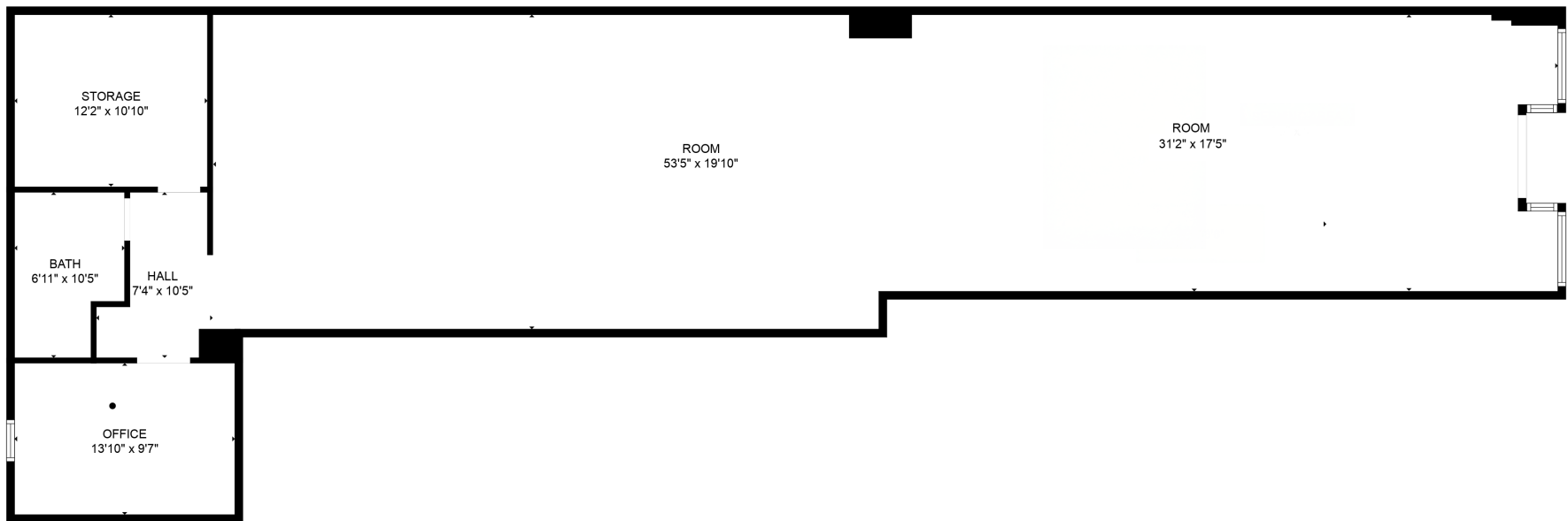
145 West 27th Street





145 West 27th Street





145 West 27th Street
New York, NY 10001

BARNES
INTERNATIONAL REALTY

New York

ESTIMATED AREAS
GLA FLOOR 1: 1955 sq. ft EXCLUDED AREAS 143 sq. ft
Total GLA 1955 sq. ft, total area 2098 sq. ft



147 West 27th Street



147 West 27th Street



147 West 27th Street

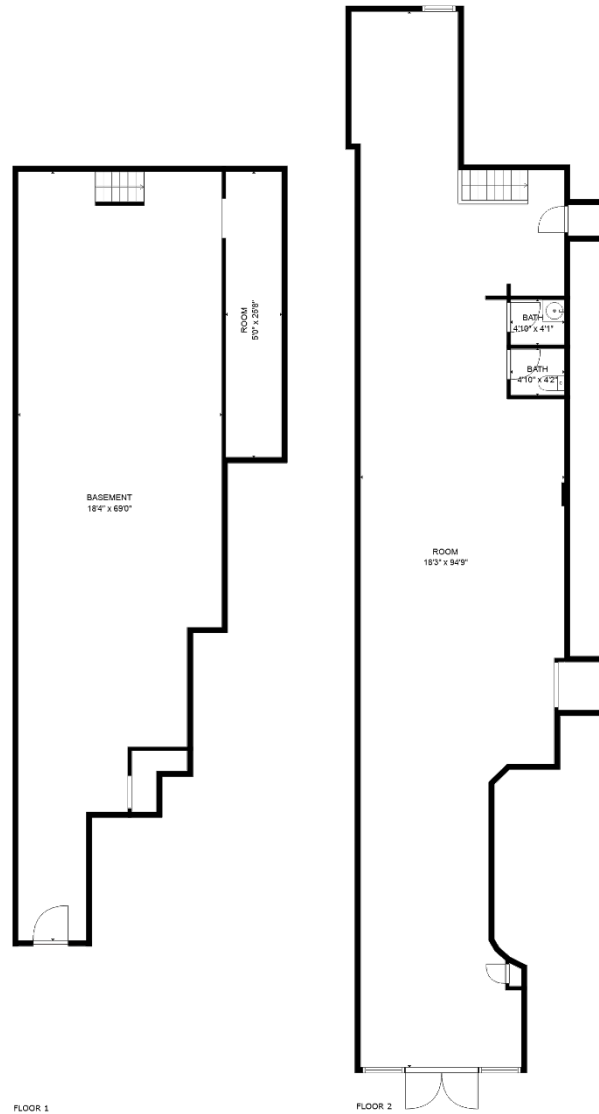






147 West 27th Street





147 West 27th Street
New York, NY 10001

BARNES
INTERNATIONAL REALTY

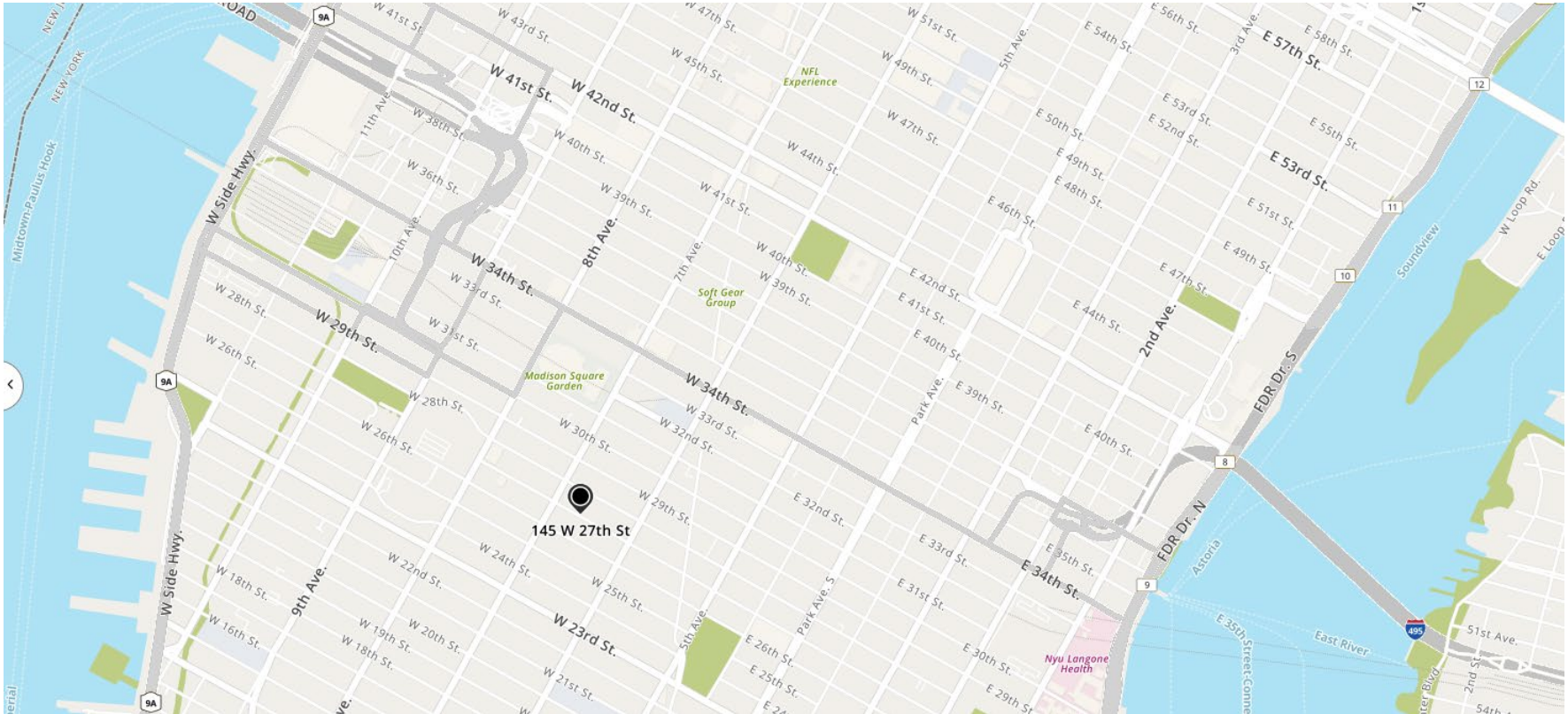
New York

TOTAL: 2,657 sq. ft
BELOW GROUND: 0 sq. ft, FLOOR 2: 53 sq. ft
EXCLUDED AREAS: ROOM: 1614 sq. ft, BASEMENT: 1043 sq. ft, UNDEFINED: 35 sq. ft



145 - 147 West 27th Street

MAP





145 - 147 West 27th Street

CHELSEA

Chelsea is a lively and diverse neighborhood on Manhattan's West Side, spanning from 14th to 34th Streets and west of Sixth Avenue. Known for its mix of historic brownstones, luxury high-rises, and converted warehouses, Chelsea features a thriving art scene with world-renowned galleries clustered around its iconic Gallery District.

Notable landmarks include the High Line, Chelsea Market, and Hudson River Park, offering residents green spaces amidst urban living. With a blend of modern and historic architecture, Chelsea is a cultural hub and one of New York City's most desirable places to live or visit

In the neighborhood



Historical Appeal



Landmark Attractions



Highly Visited Area



Trendy Dining



Artistic Hub



Public Transportation



Get in Touch



Myriam Benhamou
Licensed Real Estate Associate Broker
m.benhamou@barnes-international.com
+1 (773) 419-0365



Yann Rousseau
Managing Partner
y.rousseau@barnes-international.com
+1 (954) 278-0515

