

Legend

- Hazards
- Mile Markers
- Non-Lateral Marks
- Boat Barriers
- Leesville Marinas

AEP Facilities

- Fishing Pier
- Picnic Area
- Visitors Center
- Public Ramps

Islands

- Shoals
- Original Roanoke River Bed
- Aprox. 613'

Range

- 566'
- 576'
- 586'
- 596'
- 610'

Subdivisions

- Public Access

Counties

- Bedford County
- Campbell County
- Pittsylvania County

leesvillelake.org
LVL
 Leesville Lake, VA

This map was prepared in June 30, 2021 based upon data collected in 2005 and may not properly represent current conditions. This map is being provided for informational purposes only.
 Copyright © 2021 [Appalachian Power Company] All rights reserved.

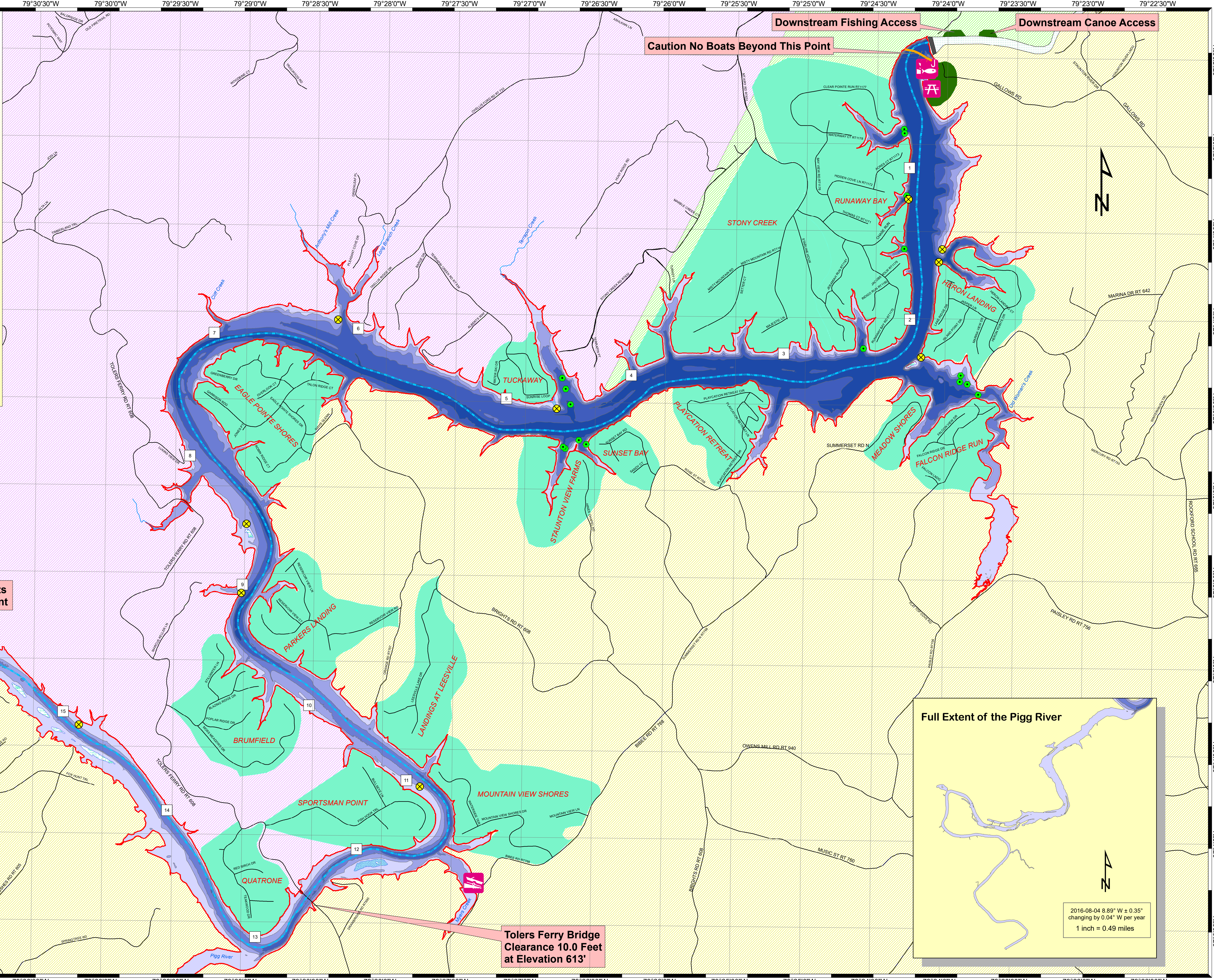
Smith Mountain Dam

Caution No Boats Beyond this Point

Picnic Area Not Accessible by Water

Tolers Ferry Bridge Clearance 10.0 Feet at Elevation 613'

0 0.25 0.5 1 Miles



Full Extent of the Pigg River

2016-08-04 8.89° W ± 0.35°
 changing by 0.04° W per year
 1 inch = 0.49 miles