

# 20015 Diamond Lake S

Rogers, MN 55374

64,800 SF Available



## Contact Us

**James  
DePietro**

+1 952 924 4616

[james.depietro@cbre.com](mailto:james.depietro@cbre.com)

**Austin  
Lovin**

+1 612 336 4255

[austin.lovin@cbre.com](mailto:austin.lovin@cbre.com)

**Dan  
Swartz**

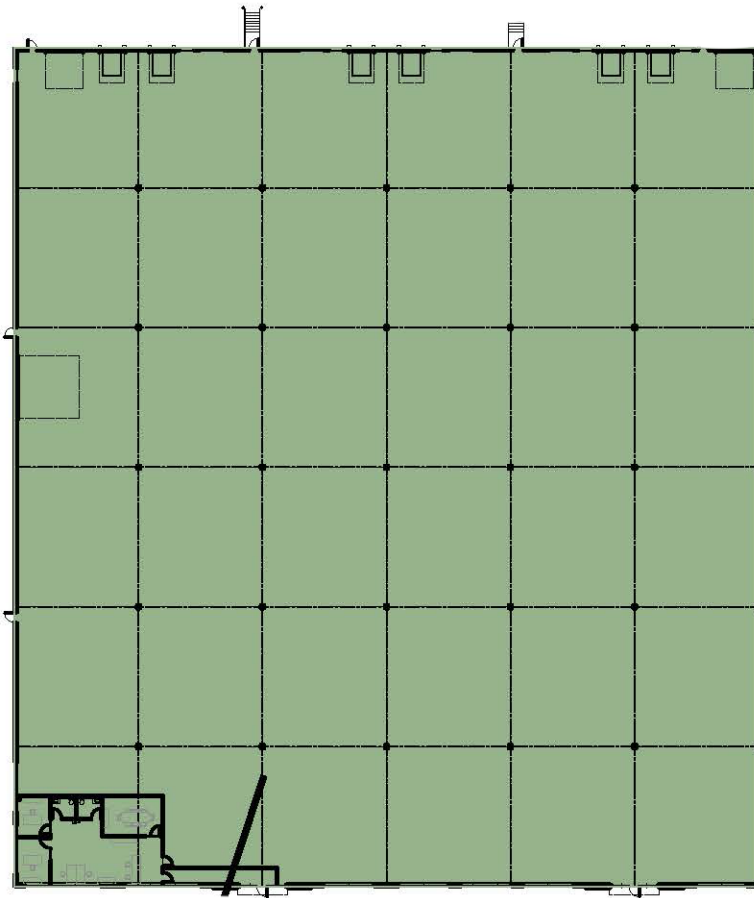
+1 952 924 4652

[dan.swartz@cbre.com](mailto:dan.swartz@cbre.com)

## 20015 Diamond Lake S

Rogers, MN 55374

For Lease



### Power

+ Heavy Power

### Lease Rates

+ Negotiable

### Est. 2025 CAM/Tax

+ \$3.65 PSF

### Loading

+ 6 Docks, 3 Drive-ins

+ 1 Drive-in: 14' x 20'

+ 2 Drive-ins: 12' x 14'

+ Dedicated outside storage available

### Total Building SF

+ 259,200 SF

### Available SF

+ 32,400 SF - 64,800 SF

- 1,613 SF Office
- 63,187 SF Warehouse

### Year Built

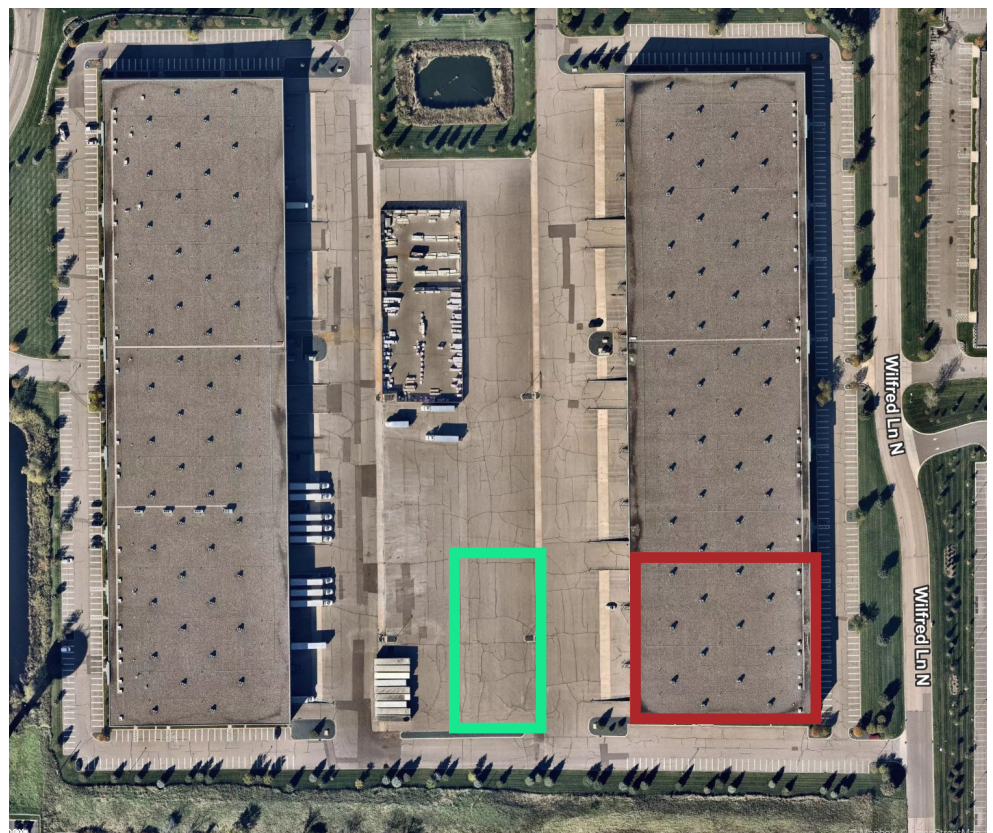
+ 2005

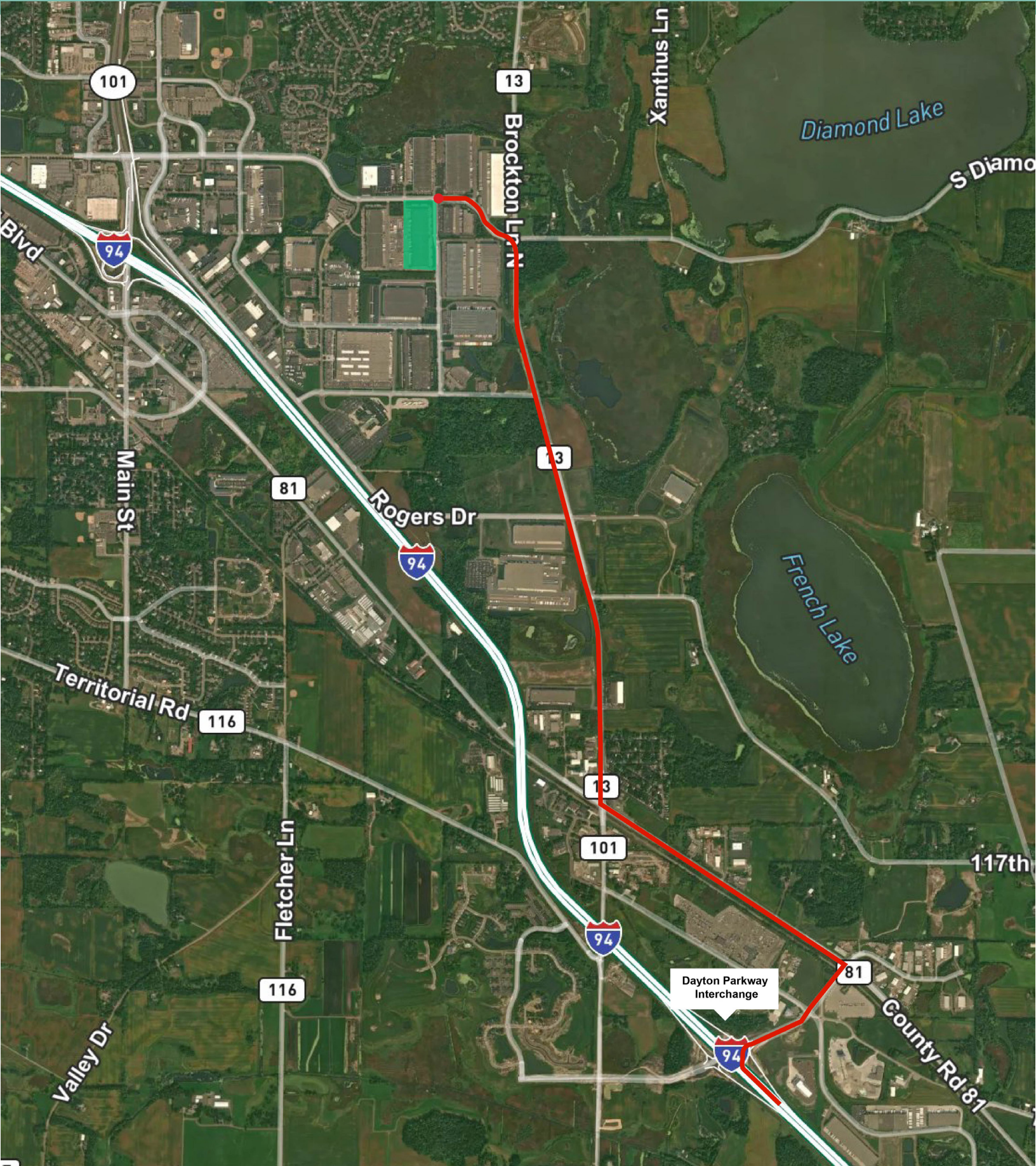
### Clear Height

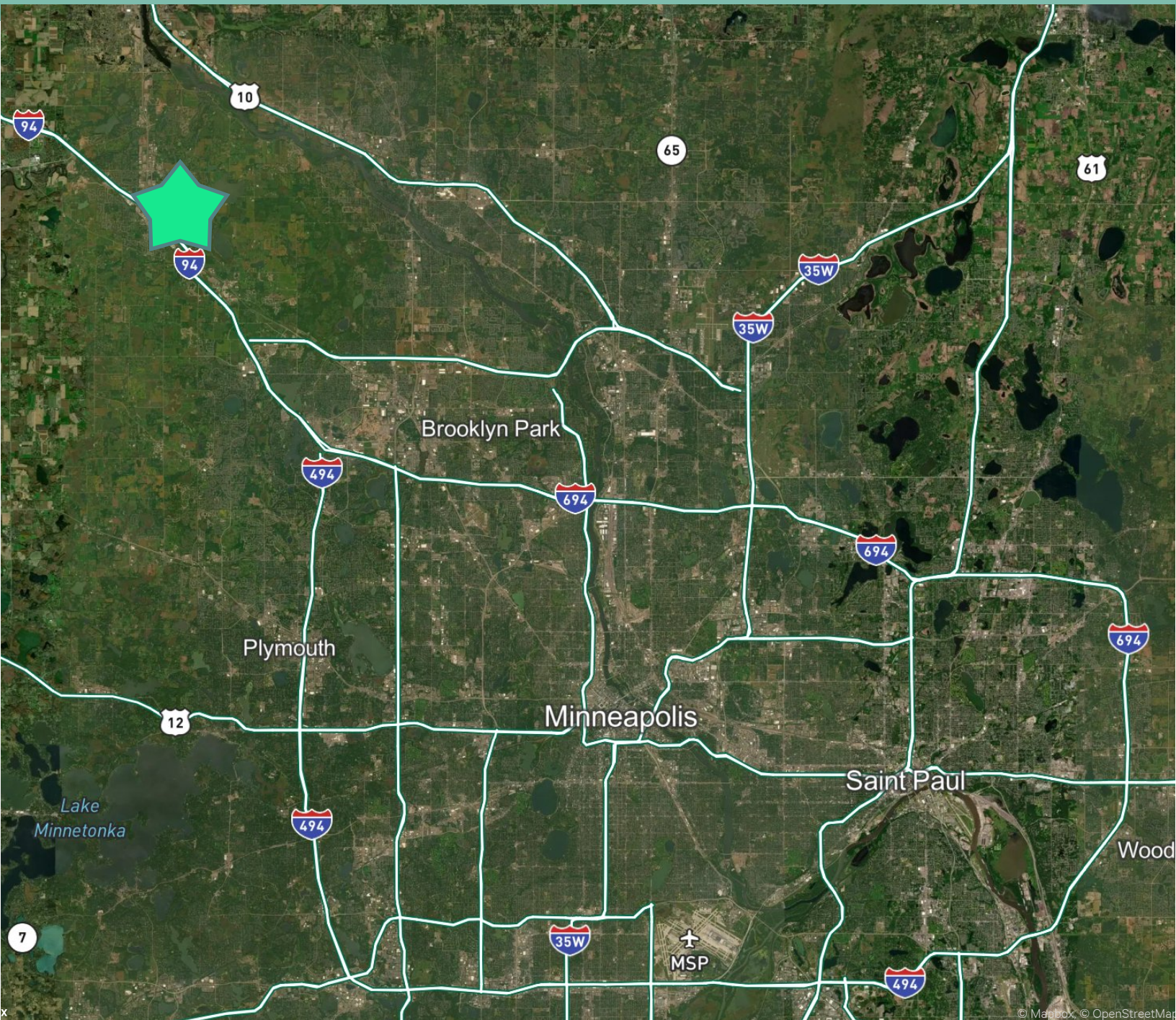
+ 32'

+ Existing demising wall splits space in half

### Dedicated Outside Storage Available







## Contact Us

**James  
DePietro**

+1 952 924 4616

[james.depietro@cbre.com](mailto:james.depietro@cbre.com)

**Austin  
Lovin**

+1 612 336 4255

[austin.lovin@cbre.com](mailto:austin.lovin@cbre.com)

**Dan  
Swartz**

+1 952 924 4652

[dan.swartz@cbre.com](mailto:dan.swartz@cbre.com)