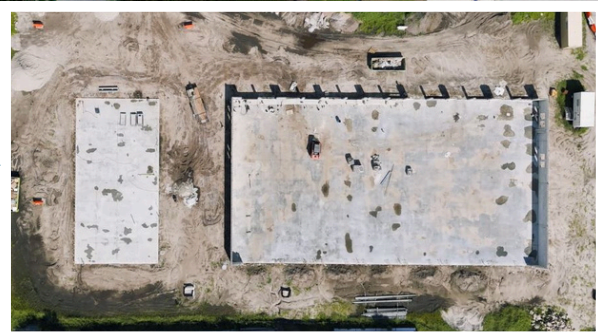


7545 Claxstraus Road

Concept*



Prime Visibility on Fruitville!

- Customizable interior office build-out
- Signage availability:
 - Storefront entrance
 - Header above storefront
- Units will come in finished condition with:
 - Plumbing stubbed in
 - 12x14 Roll up doors
 - 200 amp electric panel

Square feet: 2,500 - 3,000

Pricing: \$18/ Annual SF NNN

**Contact
For More
Information**
(941)724.2321

Kevin Robbins
Kevin@RobbinsCommercial.com

Harry E. Robbins Associates, Inc
Kevin@RobbinsCommercial.com
941.724.2321



Concept*

New Industrial Project - Solid Concrete Construction. Storefront entrance with a 12'x14' roll up door in the rear. Customize your interior office build out. Max Contiguous space is 18,500 sf. This building offers 7 industrial units. Corner units are 3,000 sf and interior units are 2,500 sf. Signage will be available on the storefront entrance and header above storefront. The units will be finished condition with plumbing stubbed in, sewer in floor, 200 amp electric panel, and concrete floors.



Scan for video on project



Harry E. Robbins Associates, Inc
Kevin@RobbinsCommercial.com
941.924.2346