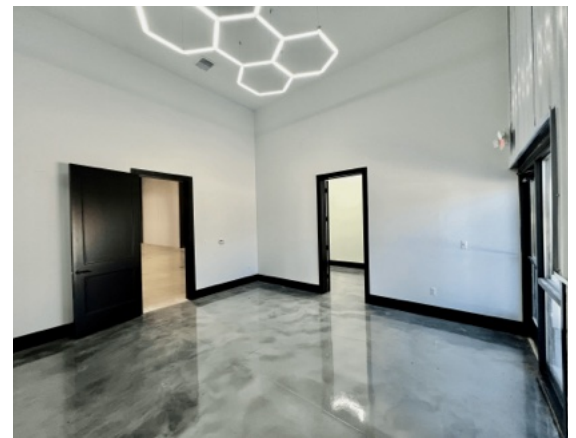


FOR LEASE / SALE

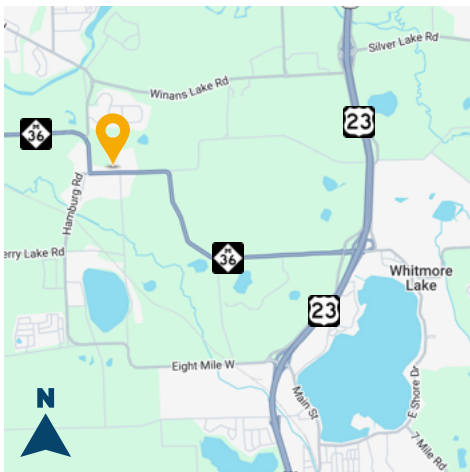
7749-7765 E. M-36 HWY, WHITMORE LAKE



RH COMMERCIAL
REALTY



4,000-22,700 SF FLEX / INDUSTRIAL SUITES



PROPERTY DETAILS

- Ranging suite sizes: 4,000 SF, 6,000 SF, 6,500 SF, 12,200 SF, up to 22,700 SF
- High image flex / industrial space ideal for any user
- Clear-span warehouse areas with great lighting
- Up to 26' clearance
- Ideal for showroom, warehousing, or recreational type users
- Frontage on M-36 Hwy and minutes from US-23 Hwy between I-96 & M-14

For information, please contact:



ROB HUGHES

248.505.0399

rob@rhcommercial.net

REECE HUGHES

248.207.5847

reece@rhcommercial.net

NATE HUGHES

810.923.6099

nate@rhcommercial.net

FOR LEASE / SALE

7749-7765 E. M-36 HWY, WHITMORE LAKE



For information, please contact:



ROB HUGHES

248.505.0399

rob@rhcommercial.net

REECE HUGHES

248.207.5847

reece@rhcommercial.net

NATE HUGHES

810.923.6099

nate@rhcommercial.net

FOR LEASE / SALE

7749-7765 E. M-36 HWY, WHITMORE LAKE



For information, please contact:



ROB HUGHES

248.505.0399

rob@rhcommercial.net

REECE HUGHES

248.207.5847

reece@rhcommercial.net

NATE HUGHES

810.923.6099

nate@rhcommercial.net

FOR LEASE / SALE

7749-7765 E. M-36 HWY, WHITMORE LAKE



AVAILABILITY BREAKDOWN

SUITE 7749

Available SF: 4,000 SF
Property Type: Flex / Industrial / Retail / Office
Lease Type: NNN
Availability Date: Immediate

Parking Spaces: Abundant
Heat / AC: Radiant / To Suit
Grade / Dock: Yes / No
Clearance: Up to 26'
Power: Available



SUITE 7753

Available SF: 4,000
Property Type: Flex / Industrial / Retail / Office
Lease Type: NNN
Availability Date: Immediate

Parking Spaces: Abundant
Heat / AC: Radiant / To Suit
Grade / Dock: Yes / No
Clearance: Up to 26'
Power: Available



SUITE 7757

Available SF: 4,000
Property Type: Flex / Industrial / Retail / Office
Lease Type: NNN
Availability Date: Immediate

Parking Spaces: Abundant
Heat / AC: Radiant / To Suit
Grade / Dock: Yes / No
Clearance: Up to 26'
Power: Available



SUITES 7749-7757

Available SF: 4,000 SF up to 12,200 SF (To Suit)
Property Type: Flex / Industrial / Retail / Office
Lease Type: NNN
Availability Date: Immediate

Parking Spaces: Abundant
Heat / AC: Radiant / To Suit
Grade / Dock: Yes / No
Clearance: Up to 26'
Power: Available

Suites 7749-7757 can be delivered as three (3) 4,000 SF units, two (2) 6,000 SF units, or one (1) contiguous 12,200 SF unit.

For information, please contact:



ROB HUGHES

248.505.0399

rob@rhcommercial.net

REECE HUGHES

248.207.5847

reece@rhcommercial.net

NATE HUGHES

810.923.6099

nate@rhcommercial.net



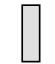
FOR LEASE / SALE

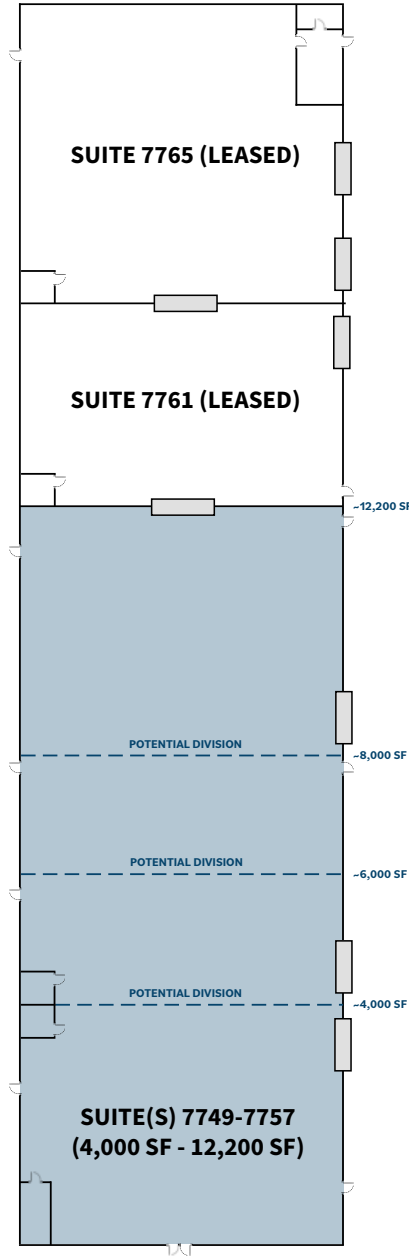
7749-7765 E. M-36 HWY, WHITMORE LAKE



FLOOR PLAN SKETCH

(NOT TO SCALE)

-  = AVAILABLE SPACE
-  = POTENTIAL DIVISIONS
-  = GRADE LEVEL DOOR



**PARKING
AREA**



E M-36 HWY

For information, please contact:



ROB HUGHES
248.505.0399
rob@rhcommercial.net

REECE HUGHES
248.207.5847
reece@rhcommercial.net

NATE HUGHES
810.923.6099
nate@rhcommercial.net

FOR LEASE / SALE

7749-7765 E. M-36 HWY, WHITMORE LAKE



PRICING INFORMATION

Lease Rate: \$13.00 / SF

NNN Est: Contact Agents

Sale Price: Contact Agents

PROPERTY DESCRIPTION

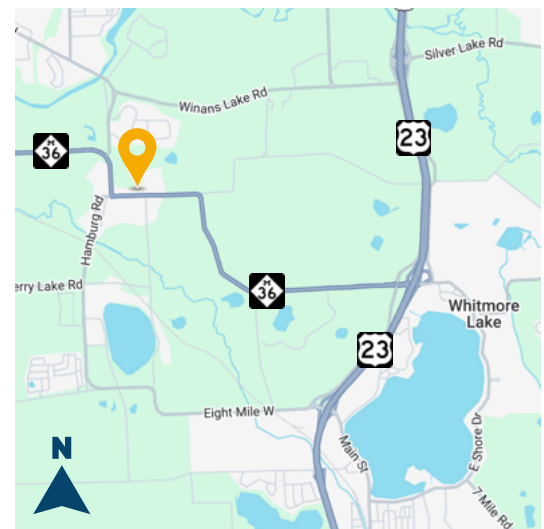
Total SF: 22,700
Available SF: 4,000 up to 22,700
Office SF: To Suit
Property Type: Flex / Industrial / Retail / Office
Tenancy: Single or multi-tenant
Year Built: 2025
Zoning: VC (Village Center)

Parcel ID: Available
Parking Spaces: 57
Heat: Yes / To Suit
Clearance: Up to 26'
Grade / Dock Doors: Yes / No
Power: Available
Site/Parcel Area: 2.00 AC

SUMMARY

Ideally located between Ann Arbor and Brighton, this facility presents a great opportunity for all commercial users. Each space can be finished to suit for tenants' requirements. Ideal space for warehousing, flex, retail, showroom, indoor recreation, child care / day care, and other similar types of uses!

ROAD MAP



For information, please contact:



ROB HUGHES
248.505.0399
rob@rhcommercial.net

REECE HUGHES
248.207.5847
reece@rhcommercial.net

NATE HUGHES
810.923.6099
nate@rhcommercial.net