

# ELMSFORD RETAIL OPPORTUNITY CORNER/ENDCAP AVAILABLE

15 EAST MAIN STREET | ELMSFORD, NEW YORK



CONTACT EXCLUSIVE BROKER FOR DETAILS:

**ARI MALUL**

LIC. Associate RE Broker  
ari@schuckmanrealty.com

**516-496-8888**

[VIEW ALL PROPERTIES](#)

25 WEST 39TH ST. SUITE 700, NEW YORK, NY 10018  
120 NORTH VILLAGE AVENUE / ROCKVILLE CENTRE, NY 11570

[WWW.SCHUCKMANREALTY.COM](http://WWW.SCHUCKMANREALTY.COM)

This information contained herein has been obtained from sources believed reliable. However, we have not verified it and make no guarantee, warranty or representation about it. It is submitted subject to the possibility of errors, omissions, change of price, rental and other conditions, prior sale, lease or financing, or withdrawal without notice. It is your responsibility to independently confirm its accuracy and completeness. Any projections, opinions, assumptions, or estimates used are for example only and they may not represent the current or future suitability, availability or performance of the property. You and your tax and legal advisors should conduct your own investigation of any property and transaction. We may or may not have an exclusive or nonexclusive contractual relationship with a tenant or the owner/landlord of a particular property; and if we do, such relationship shall be fully disclosed to you on a timely basis. Third-party trademarks, service marks, graphics, and logos belong to third parties. You are not granted any right or license with respect to Schuckman Realty Inc.'s trademarks service marks, graphics, and logos or the trademarks service marks, graphics, and logos of any third party. Kenneth Schuckman is Broker of record of Schuckman Realty Inc.

**SCHUCKMAN**<sup>®</sup>  
REALTY INC.



# ELMSFORD RETAIL OPPORTUNITY

## 15 EAST MAIN STREET | ELMSFORD, NEW YORK



### COMMENTS:

- PRIME CORNER
- HIGH VOLUME WESTCHESTER CVS
- LOCATED IN THE HEART OF ELMSFORD AT THE INTERSECTION OF SAW MILL RIVER RD. & MAIN ST.
- DEDICATED PARKING ONSITE & MUNICIPAL PARKING ACROSS STREET
- CONVENIENT ACCESS TO HEAVILY TRAFFICKED HIGHWAYS
- ANYTIME FITNESS

### JOIN:



CONTACT EXCLUSIVE BROKER FOR DETAILS:

**ARI MALUL**

LIC. Associate RE Broker  
ari@schuckmanrealty.com

**516-496-8888**

**VIEW ALL PROPERTIES**



25 WEST 39TH ST. SUITE 700, NEW YORK, NY 10018  
120 NORTH VILLAGE AVENUE / ROCKVILLE CENTRE, NY 11570

WWW.SCHUCKMANREALTY.COM

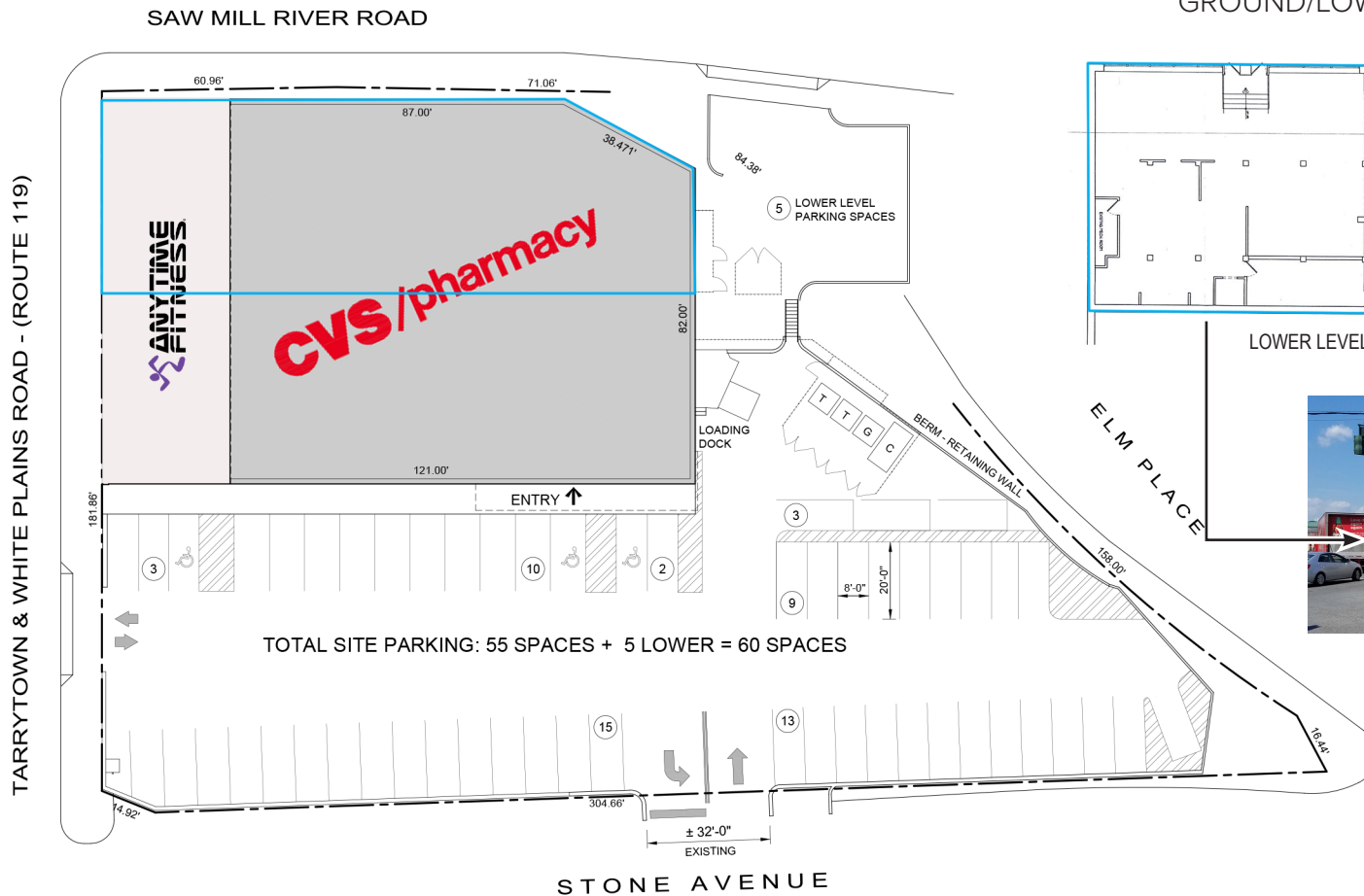
This information contained herein has been obtained from sources believed reliable. However, we have not verified it and make no guarantee, warranty or representation about it. It is submitted subject to the possibility of errors, omissions, change of price, rental and other conditions, prior sale, lease or financing, or withdrawal without notice. It is your responsibility to independently confirm its accuracy and completeness. Any projections, opinions, assumptions, or estimates used are for example only and they may not represent the current or future suitability, availability or performance of the property. You and your tax and legal advisors should conduct your own investigation of any property and transaction. We may or may not have an exclusive or nonexclusive contractual relationship with a tenant or the owner/landlord of a particular property; and if we do, such relationship shall be fully disclosed to you on a timely basis. Third-party trademarks, service marks, graphics, and logos belong to third parties. You are not granted any right or license with respect to Schuckman Realty Inc.'s trademarks service marks, graphics, and logos or the trademarks service marks, graphics, and logos of any third party. Kenneth Schuckman is Broker of record of Schuckman Realty Inc.



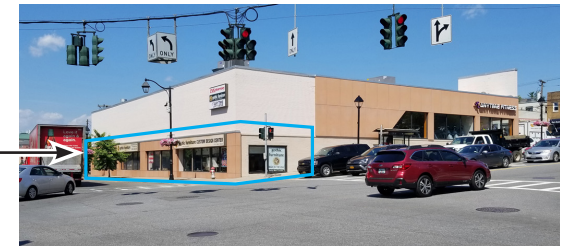
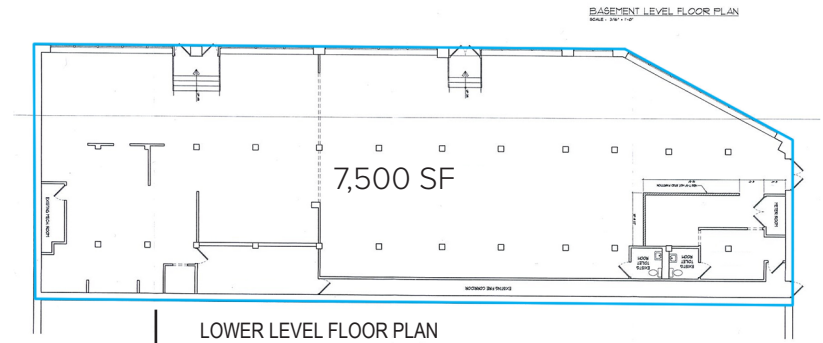
# ELMSFORD RETAIL OPPORTUNITY

## 15 EAST MAIN STREET | ELMSFORD, NEW YORK

### FLOOR PLAN



### GROUND/LOWER LEVEL DIVISIBLE



CONTACT EXCLUSIVE BROKER FOR DETAILS:

**ARI MALUL**

LIC. Associate RE Broker  
ari@schuckmanrealty.com

**516-496-8888**

**VIEW ALL PROPERTIES**



25 WEST 39TH ST. SUITE 700, NEW YORK, NY 10018  
120 NORTH VILLAGE AVENUE / ROCKVILLE CENTRE, NY 11570

WWW.SCHUCKMANREALTY.COM

This information contained herein has been obtained from sources believed reliable. However, we have not verified it and make no guarantee, warranty or representation about it. It is submitted subject to the possibility of errors, omissions, change of price, rental and other conditions, prior sale, lease or financing, or withdrawal without notice. It is your responsibility to independently confirm its accuracy and completeness. Any projections, opinions, assumptions, or estimates used are for example only and they may not represent the current or future suitability, availability or performance of the property. You and your tax and legal advisors should conduct your own investigation of any property and transaction. We may or may not have an exclusive or nonexclusive contractual relationship with a tenant or the owner/landlord of a particular property; and if we do, such relationship shall be fully disclosed to you on a timely basis. Third-party trademarks, service marks, graphics, and logos belong to third parties. You are not granted any right or license with respect to Schuckman Realty Inc.'s trademarks service marks, graphics, and logos or the trademarks service marks, graphics, and logos of any third party. Kenneth Schuckman is Broker of record of Schuckman Realty Inc.