



**PREMIER LARGE OFFICE SPACE ON PARK CITY MAIN STREET  
APPROX 6,000 SQUARE FEET TOTAL**

**OLD TOWN 537 MAIN STREET | PARK CITY, UTAH 84060**

**JILL SNYDER**  
435 671-0793  
jill@wswcommercial.com

**KATIE WILKING** CCIM, MRED  
435 640-4964  
katie@wswcommercial.com

**CHELSEA WALL**  
435 671-3541  
chelsea@wswcommercial.com

**BERKSHIRE  
HATHAWAY** | UTAH  
HOMESERVICES | PROPERTIES

COMMERCIAL DIVISION

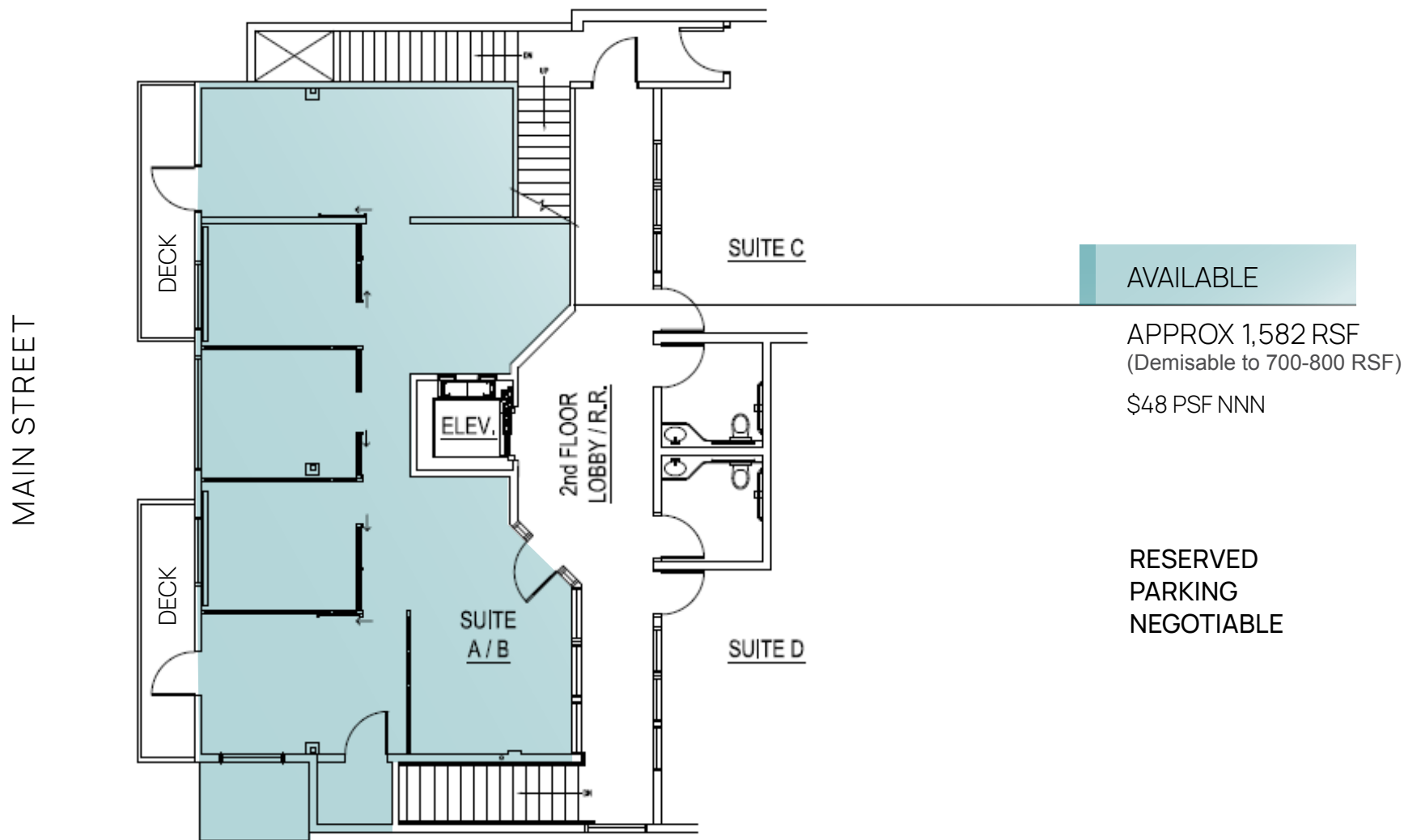
# LEVEL 2 - PROPERTY PHOTOS

OLD TOWN 537 MAIN STREET | PARK CITY, UTAH 84060



# LEVEL 2 - FLOORPLAN

OLD TOWN 537 MAIN STREET | PARK CITY, UTAH 84060



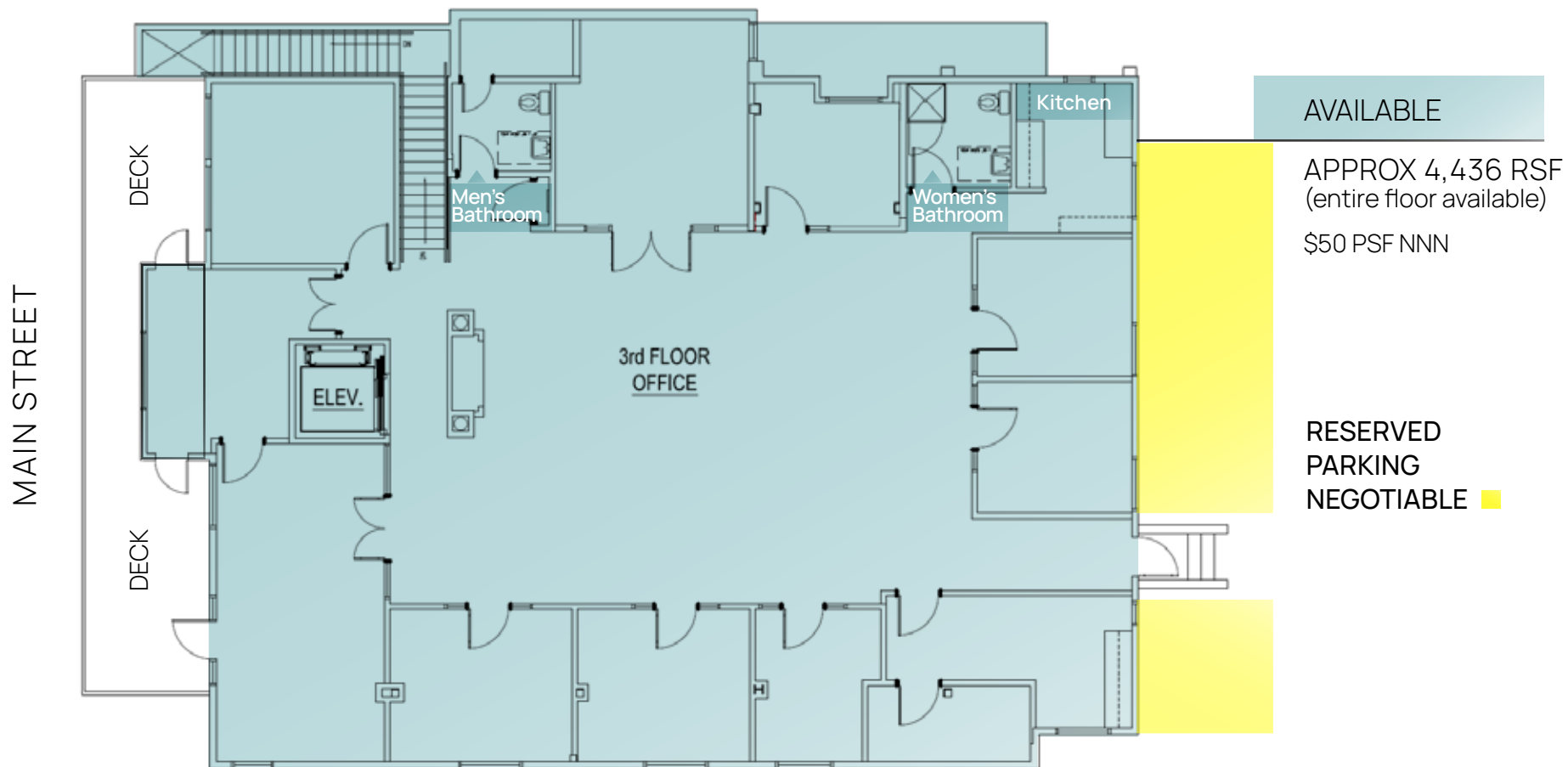
# LEVEL 3 - PROPERTY PHOTOS

OLD TOWN 537 MAIN STREET | PARK CITY, UTAH 84060



# LEVEL 3 - FLOORPLAN

OLD TOWN 537 MAIN STREET | PARK CITY, UTAH 84060



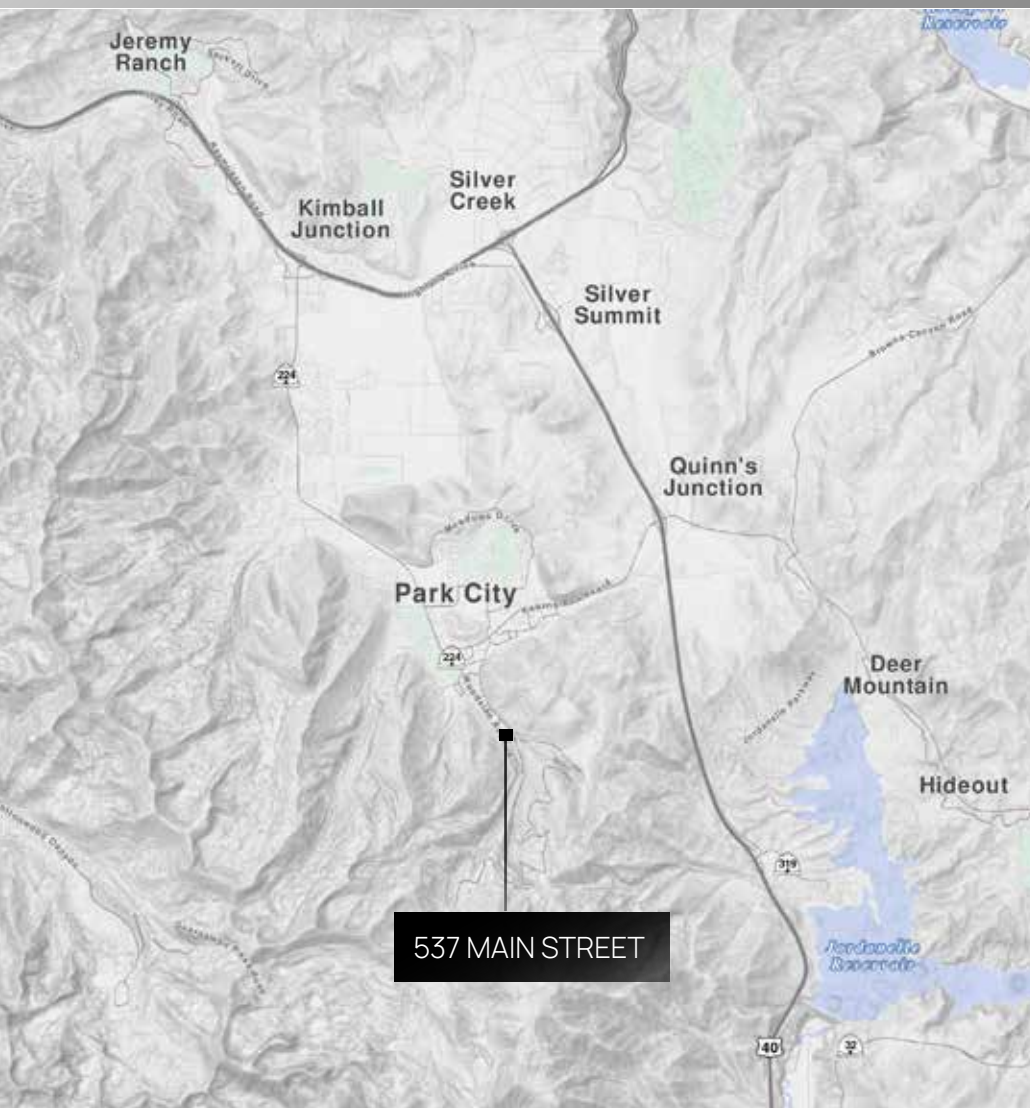
# PARKING

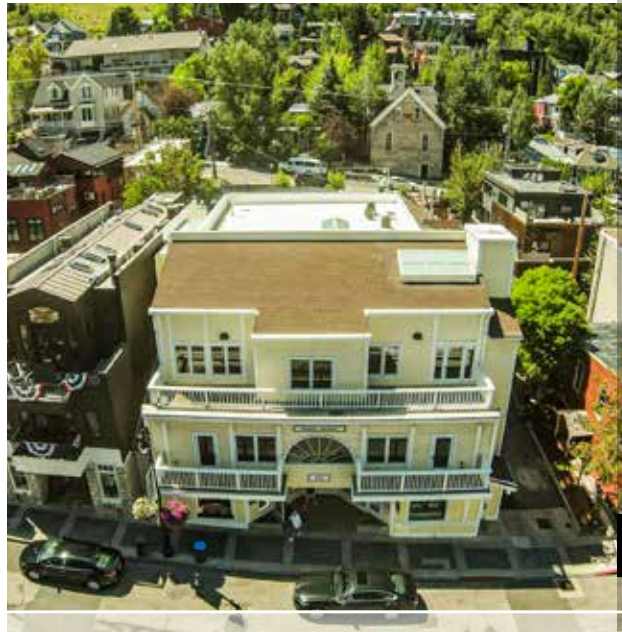
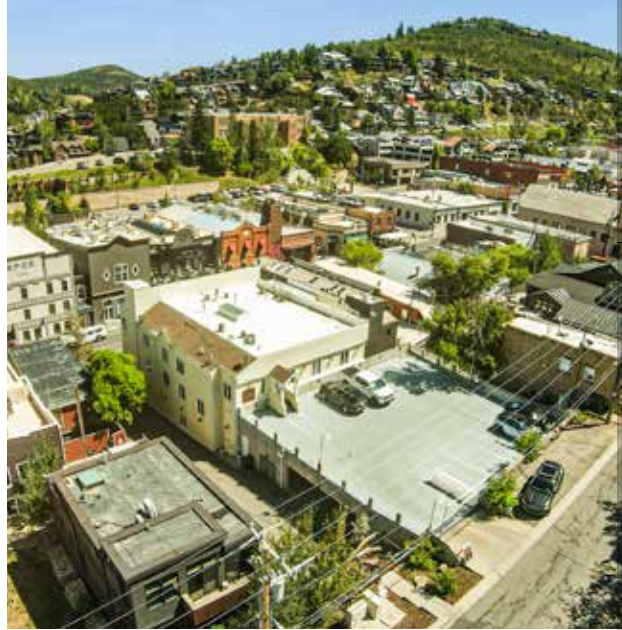
OLD TOWN 537 MAIN STREET | PARK CITY, UTAH 84060



# LOCATION

OLD TOWN 537 MAIN STREET | PARK CITY, UTAH 84060





**OLD TOWN**  
537 MAIN STREET  
PARK CITY, UTAH 84060

- Approximately 6,000 RSF total
- 2nd floor- 1,582 RSF available
- 3rd floor- 4,436 RSF available (entire floor)
- Two Main Street entrances, and one entrance off Park Avenue
- Exceptional location on Main Street with prime exposure
- Dedicated parking
- Ample windows with abundant natural light
- Large conference room
- Kitchen
- Multiple private offices on 3rd floor
- Three balconies
- Prime location on the street

**\$48-\$50 PSF**



**BHHSUTAH.COM**

**JILL SNYDER**  
435 671-0793  
jill@wswcommercial.com

**KATIE WILKING** CCIM, MRED  
435 640-4964  
katie@wswcommercial.com

**CHELSEA WALL**  
435 671-3541  
chelsea@wswcommercial.com

**BERKSHIRE HATHAWAY** | UTAH  
HOMESERVICES | PROPERTIES

COMMERCIAL DIVISION