

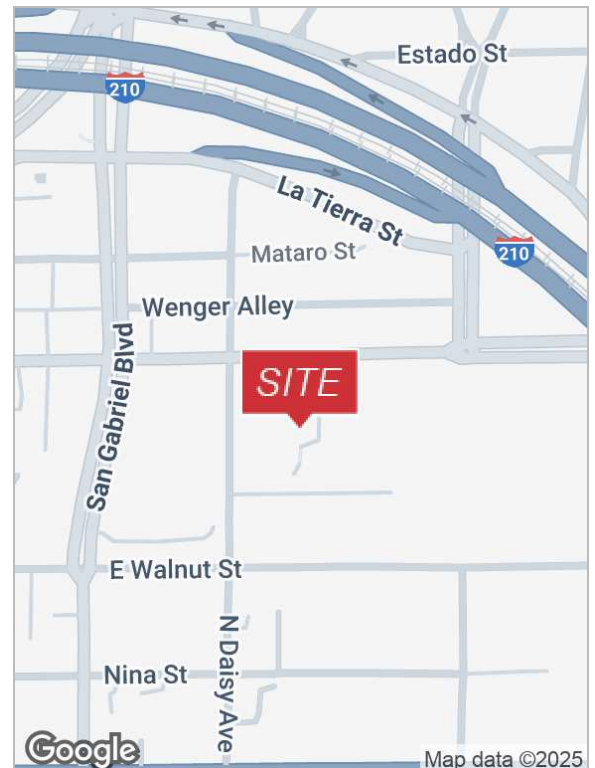


2832 Foothill Blvd.

Pasadena, California 91107

Lease Highlights

- Asking lease rate \$1.75 psf/month IG
- ± 1,200 SF Lab Space
- ± 300 SF Storage/warehouse
- ±3,500 Six Private offices, Open Area, and Breakroom.
- 100% Air Conditioned
- ±11 FT Clearance Height in Warehouse Area
- Power: 225 Amps 120-208v 3 phase
- Available Immediately



For more information

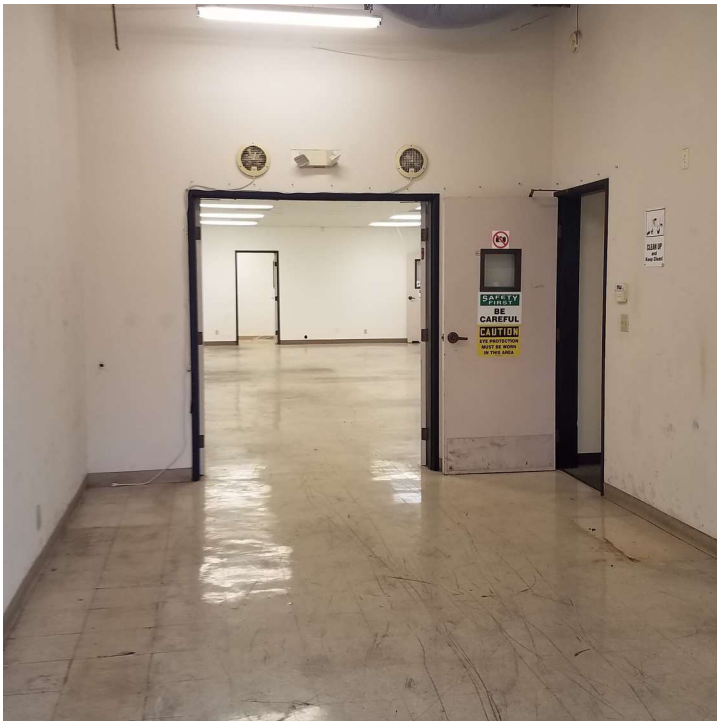
Scott Wilcott Jr., CCIM, Senior Vice President

O: 626.204.1500

swilcott@naicapital.com | CalDRE #01214447

For Lease - 5,118 SF

2832 Foothill Blvd.

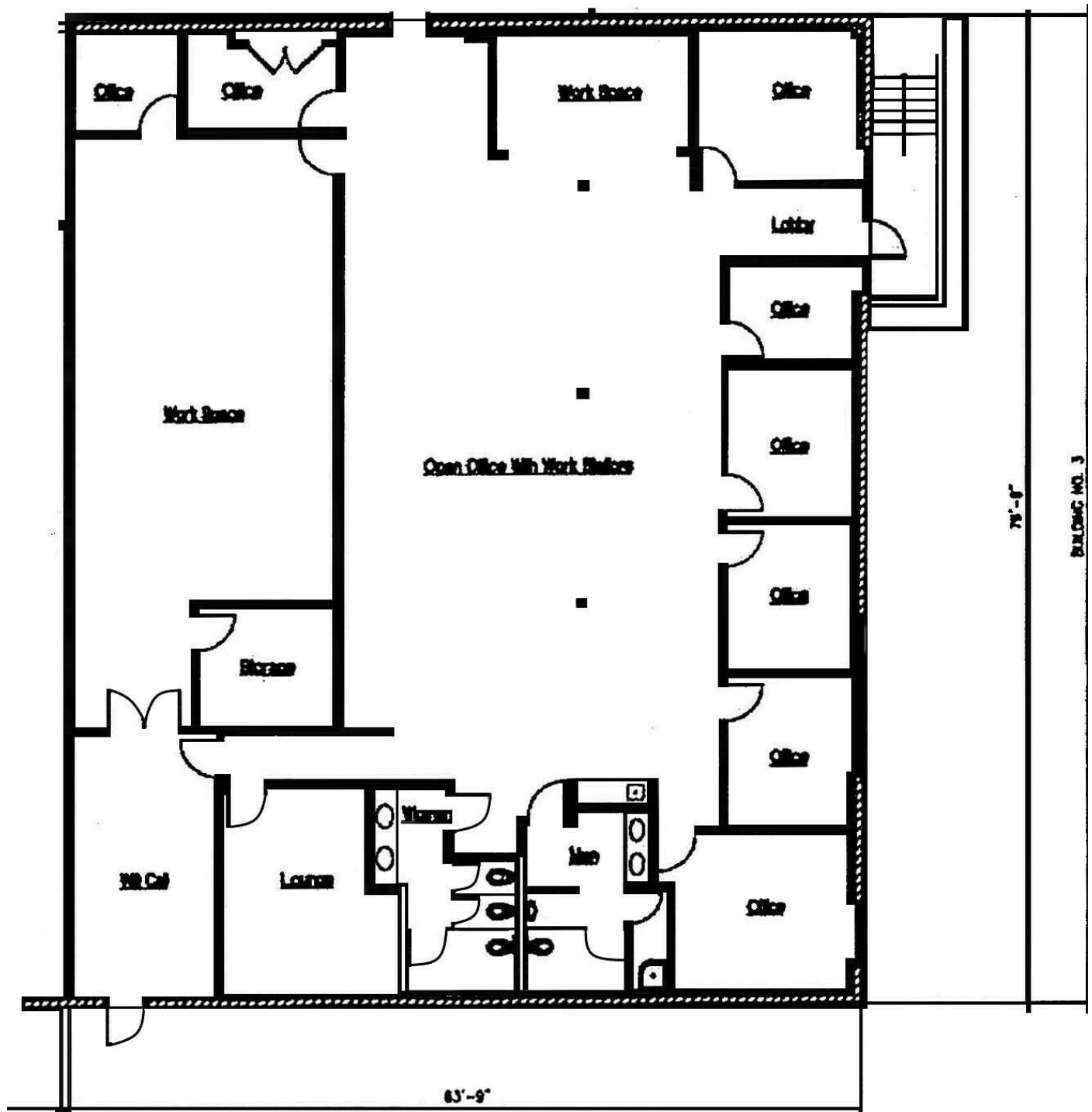


Scott Wilcott Jr., CCIM
Senior Vice President
626.204.1500
swilcott@naicapital.com
CalDRE #01214447

NAICapital
COMMERCIAL REAL ESTATE SERVICES, WORLDWIDE

For Lease - 5,118 SF

2832 Foothill Blvd.



Scott Wilcott Jr., CCIM

Senior Vice President

626.204.1500

swilcott@naicapital.com

CalDRE #01214447

NAICapital
COMMERCIAL REAL ESTATE SERVICES, WORLDWIDE