

635

S NORTON AVE
Los Angeles



FOR LEASE
STREET LEVEL
HANCOCK PARK OFFICE

LEASE DETAILS

635 S NORTON AVENUE
LOS ANGELES, CA 90005

*Street level office suite in Hancock Park
currently used as a photography studio.
Space is ADA Compliant.*

SIZE

2,800 SF

RATE

\$1.75/SF MG

TERM

Negotiable

PARKING

4 included

PRIME LOCATION

High visibility space situated at the corner of Wilshire Blvd and Norton Ave in Hancock Park. Close distance to Koreatown, and Miracle Mile.

FLEXIBLE WORKSPACE

Versatile layout with plenty of open work space that can be used for office/production. Suite includes reception area, 4 private offices, 2 bathrooms and plenty of storage.



LISTING TEAM



JAKE ZACUTO

Managing Director

310.469.9012

jake@zacutogroup.com

BRE #01377441

JUSTIN KREISBERG

Director

310.469.9020

justin@zacutogroup.com

BRE #02087507

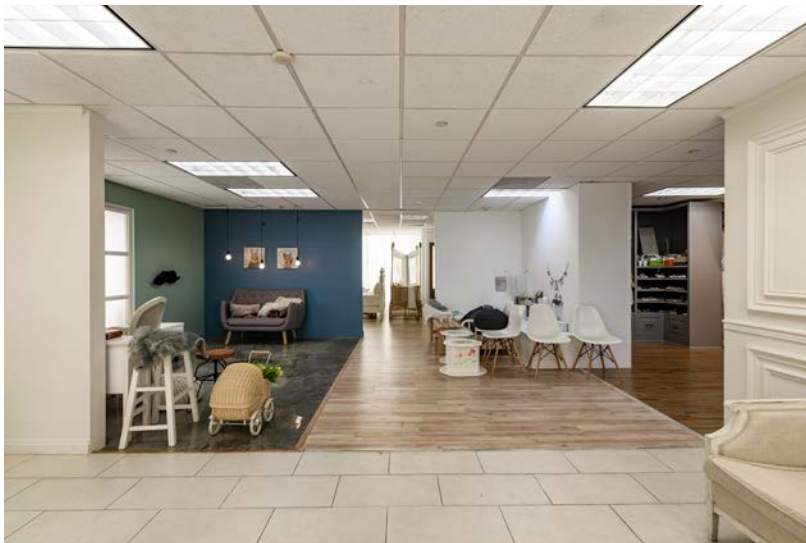
635

S NORTON AVE
Los Angeles

IDEAL FOR
Service uses
Tutoring
Showroom
*Production/
Recording Studio*
Photography Studio

LEASE

635 S NORTON AVENUE, LOS ANGELES, CA 90005



635
S NORTON AVE
Los Angeles



LEASE

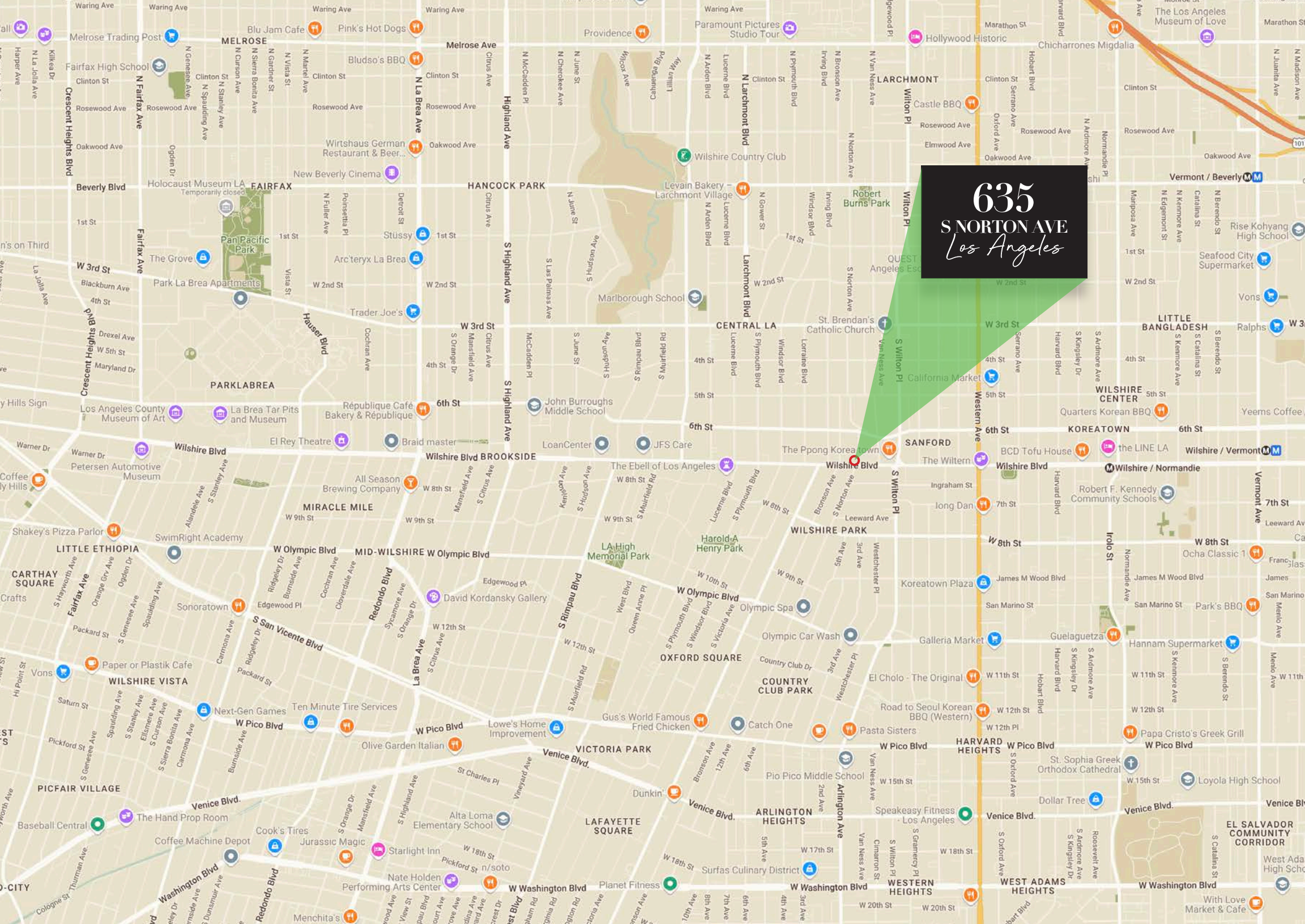
635 S NORTON AVENUE, LOS ANGELES, CA 90005



635
S NORTON AVE
Los Angeles



635
S NORTON AVE
Los Angeles



635
S. NORTON AVE
Los Angeles



JAKE ZACUTO

Managing Director

310.469.9012

jake@zacutogroup.com

BRE #01377441

JUSTIN KREISBERG

Director

310.469.9020

justin@zacutogroup.com

BRE #02087507

No warranty, express or implied, is made as to the accuracy of the information contained herein. This information is submitted subject to errors, omissions, change of price, rental or other conditions, withdrawal without notice. All parties who receive this material should not rely on it, but should use it as a starting point of analysis, and should independently confirm the accuracy of the information contained herein through a due diligence review of the books, records, files and documents that constitute reliable sources of the information described herein. Logos and images are for identification purposes only and may be trademarks of their respective companies. All terms provided are approximate. Lessee to verify. 10/2024

ZACUTOGROUP.COM | 310.469.9300

