



Keegan & Coppin
COMPANY, INC.

SALE OR LEASE

3785 BRICKWAY BLVD, SUITE 210
SANTA ROSA, CA 95403

AVION PLACE BUSINESS CENTER
PREMIER CLASS "A" OFFICE
CONDO

3785

CRENSHAW PLACE
ASSOCIATION, INC.



Go beyond broker.

PRESENTED BY:

ANNETTE COOPER, SENIOR ADVISOR
LIC # 00826250 (707) 528-1400, EXT 257
ACOOPER@KEEGANCOPPIN.COM

KEVIN DORAN, PARTNER
LIC # 01704987 (707) 528-1400, EXT 270
KDORAN@KEEGANCOPPIN.COM



Keegan & Coppin
COMPANY, INC.



3785 BRICKWAY BLVD, SUITE 210
SANTA ROSA, CA 95403

AVION PLACE BUSINESS CENTER PREMIER CLASS "A" OFFICE CONDO FOR SALE

AIRPORT AREA CONDO FOR SALE

PROPERTY INFORMATION HIGHLIGHTS

- High-quality building with extensive landscaping and glass-line
- Outdoor picnic area on-site
- Avion Place Condominium project located near the Charles Schultz Sonoma County Regional Airport
- A few blocks away from the new SMART Train Airport depot
- Easy access to the Hwy 101 corridor
- Minutes from a golf course, fitness center and retail services
- Building Signage Opportunity
- High ceilings, fully sprinklered, common area restrooms, and ample parking

SPACE SIZE

2,112+/- sq. ft.

APN

059-380-007

ZONING

MP Industrial Park

PARKING

4/1000 average ratio per building

DESCRIPTION OF PREMISES

Professional Class "A" Office. All units are elevator served, newly built, and ideal for attorneys, engineers, accountants, insurance agents, sales offices, etc. Welcoming reception area, six private offices with interior glass walls to bullpen area.

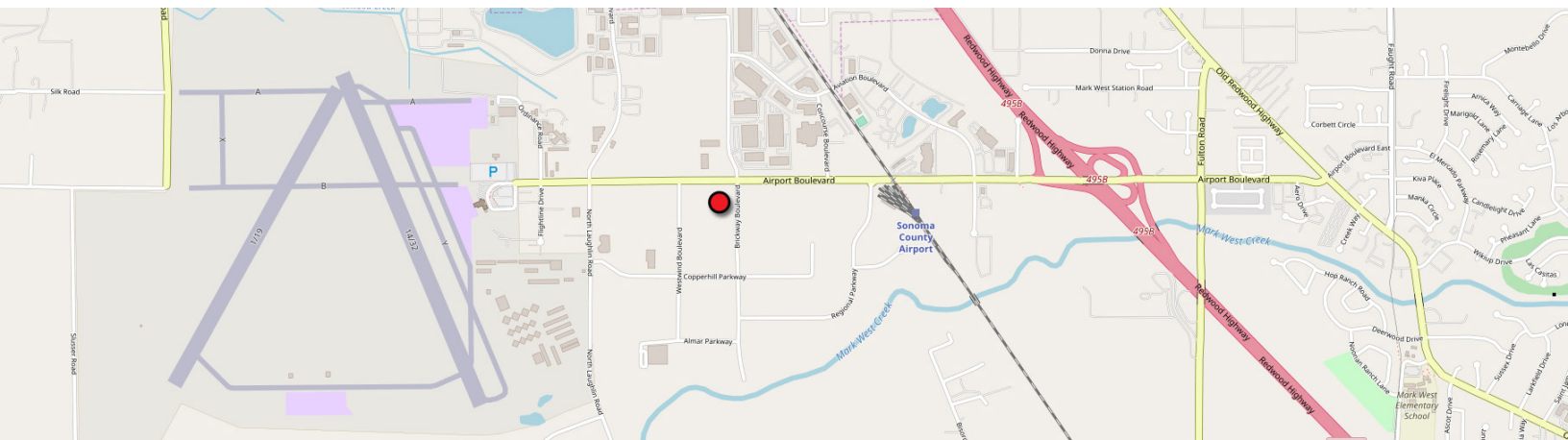
DESCRIPTION OF LOCATION

Located in the Prestigious Charles Schulz Sonoma County Regional Airport area of Santa Rosa comprised of attractive, high quality buildings with extensive landscaping and glass lines, and near the Windsor Golf Course and the Airport Health & Fitness Club.

The County of Sonoma has current plans to extend Brickway Blvd. South, connecting River Road, allowing yet another access into the Airport area.

OFFERING

Sale Price	\$575,000
Price PSF	\$272+/-
Lease Rate	\$1.75 MODIFIED GROSS



PRESENTED BY:

ANNETTE COOPER, SENIOR ADVISOR
KEEGAN & COPPIN CO., INC.
LIC # 00826250 (707) 528-1400, EXT 257
ACOOOPER@KEEGANCOPPIN.COM

KEVIN DORAN, PARTNER
KEEGAN & COPPIN CO., INC.
LIC # 01704987 (707) 528-1400, EXT 270
KDORAN@KEEGANCOPPIN.COM

Keegan & Coppin Company, Inc.

The above information, while not guaranteed, has been secured from sources we believe to be reliable. Submitted subject to error, change or withdrawal. An interested party should verify the status of the property and the information herein.



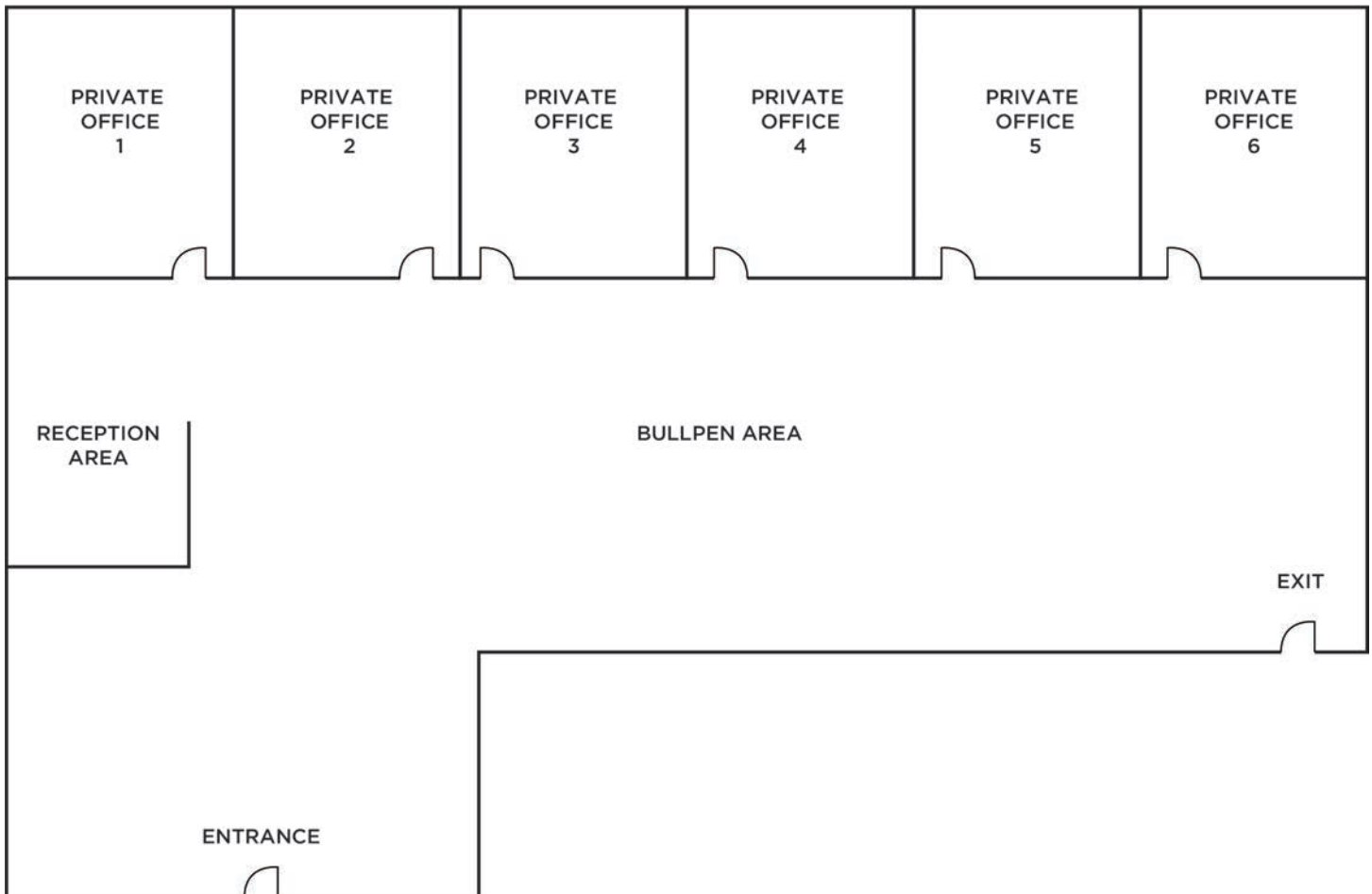
Keegan & Coppin
COMPANY, INC.



3785 BRICKWAY BLVD, SUITE 210
SANTA ROSA, CA 95403

**AVION PLACE BUSINESS
CENTER PREMIER CLASS "A"
OFFICE CONDO FOR SALE**

FLOOR PLAN



PRESENTED BY:

ANNETTE COOPER, SENIOR ADVISOR
KEEGAN & COPPIN CO., INC.
LIC # 00826250 (707) 528-1400, EXT 257
ACOOOPER@KEEGANCOPPIN.COM

KEVIN DORAN, PARTNER
KEEGAN & COPPIN CO., INC.
LIC # 01704987 (707) 528-1400, EXT 270
KDORAN@KEEGANCOPPIN.COM

Keegan & Coppin Company, Inc.

The above information, while not guaranteed, has been secured from sources we believe to be reliable. Submitted subject to error, change or withdrawal. An interested party should verify the status of the property and the information herein.



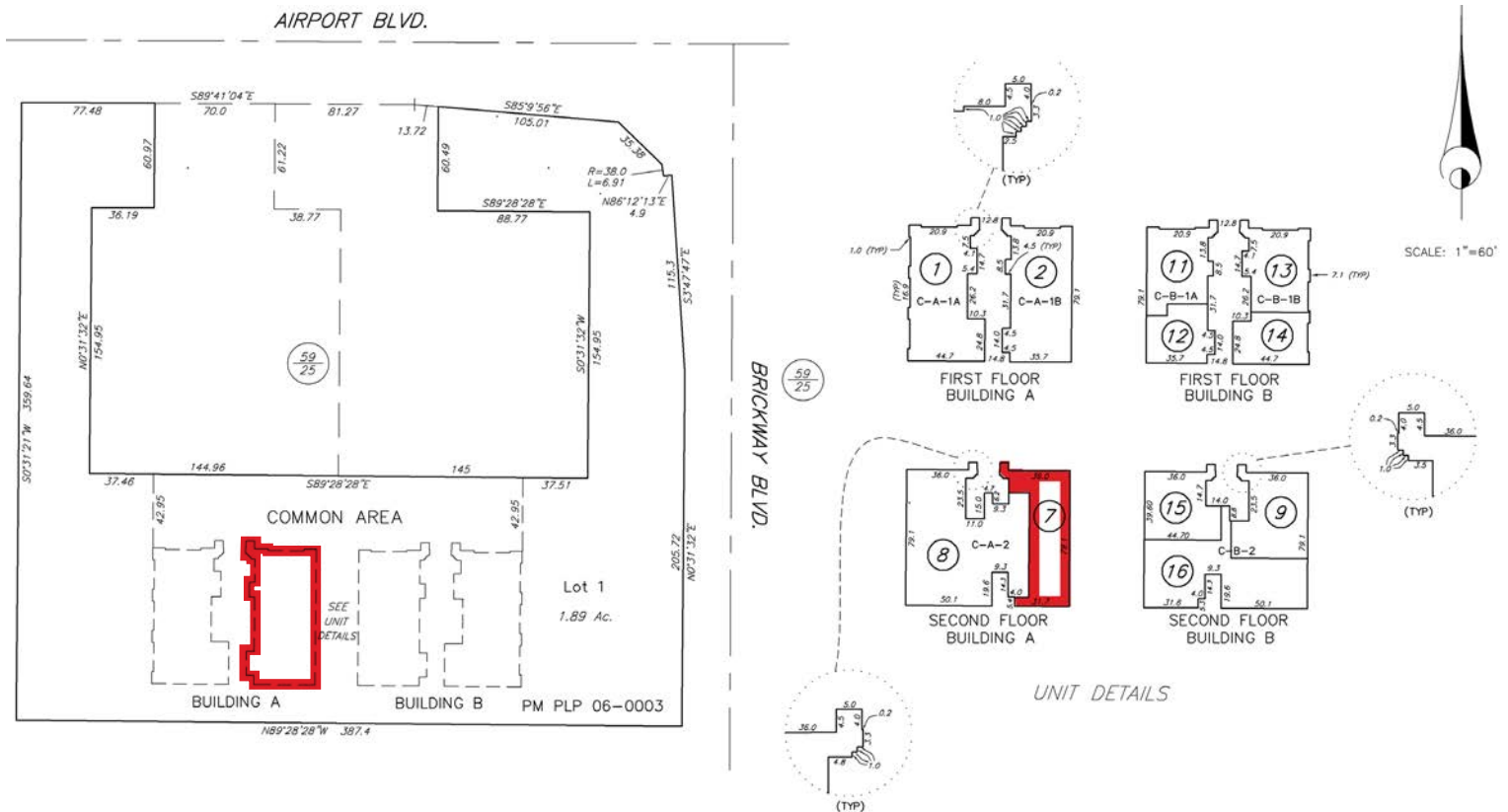
Keegan & Coppin
COMPANY, INC.



3785 BRICKWAY BLVD, SUITE 210
SANTA ROSA, CA 95403

**AVION PLACE BUSINESS
CENTER PREMIER CLASS "A"
OFFICE CONDO FOR SALE**

SITE PLAN



PRESENTED BY: **ANNETTE COOPER, SENIOR ADVISOR**
KEEGAN & COPPIN CO., INC.
LIC # 00826250 (707) 528-1400, EXT 257
ACOOOPER@KEEGANCOPPIN.COM

KEVIN DORAN, PARTNER
KEEGAN & COPPIN CO., INC.
LIC # 01704987 (707) 528-1400, EXT 270
KDORAN@KEEGANCOPPIN.COM

Keegan & Coppin Company, Inc.

The above information, while not guaranteed, has been secured from sources we believe to be reliable. Submitted subject to error, change or withdrawal. An interested party should verify the status of the property and the information herein.



Keegan & Coppin
COMPANY, INC.



3785 BRICKWAY BLVD, SUITE 210
SANTA ROSA, CA 95403

**AVION PLACE BUSINESS
CENTER PREMIER CLASS "A"
OFFICE CONDO FOR SALE**

PHOTOS



PRESENTED BY:

ANNETTE COOPER, SENIOR ADVISOR
KEEGAN & COPPIN CO., INC.
LIC # 00826250 (707) 528-1400, EXT 257
ACOOOPER@KEEGANCOPPIN.COM

KEVIN DORAN, PARTNER
KEEGAN & COPPIN CO., INC.
LIC # 01704987 (707) 528-1400, EXT 270
KDORAN@KEEGANCOPPIN.COM

Keegan & Coppin Company, Inc.

The above information, while not guaranteed, has been secured from sources we believe to be reliable. Submitted subject to error, change or withdrawal. An interested party should verify the status of the property and the information herein.



Keegan & Coppin
COMPANY, INC.



3785 BRICKWAY BLVD, SUITE 210
SANTA ROSA, CA 95403

**AVION PLACE BUSINESS
CENTER PREMIER CLASS "A"
OFFICE CONDO FOR SALE**

PHOTOS



PRESENTED BY:

ANNETTE COOPER, SENIOR ADVISOR
KEEGAN & COPPIN CO., INC.
LIC # 00826250 (707) 528-1400, EXT 257
ACOOOPER@KEEGANCOPPIN.COM

KEVIN DORAN, PARTNER
KEEGAN & COPPIN CO., INC.
LIC # 01704987 (707) 528-1400, EXT 270
KDORAN@KEEGANCOPPIN.COM

Keegan & Coppin Company, Inc.

The above information, while not guaranteed, has been secured from sources we believe to be reliable. Submitted subject to error, change or withdrawal. An interested party should verify the status of the property and the information herein.



Keegan & Coppin
COMPANY, INC.



3785 BRICKWAY BLVD, SUITE 210
SANTA ROSA, CA 95403

**AVION PLACE BUSINESS
CENTER PREMIER CLASS "A"
OFFICE CONDO FOR SALE**



Keegan & Coppin Co., Inc.
1355 N Dutton Ave.
Santa Rosa, CA 95401
www.keegancoppin.com
(707) 528-1400

PRESENTED BY:

ANNETTE COOPER, SENIOR ADVISOR
LIC # 00826250 (707) 528-1400, EXT 257
ACOOPER@KEEGANCOPPIN.COM

KEVIN DORAN, PARTNER
KEEGAN & COPPIN CO., INC.
LIC # 01704987 (707) 528-1400, EXT 270
KDORAN@KEEGANCOPPIN.COM

The above information, while not guaranteed, has been secured from sources we believe to be reliable. Submitted subject to error, change or withdrawal. An interested party should verify the status of the property and the information herein.