

# FOR SALE CLASS A CORNER OFFICE IN CORAL SPRINGS PROFESSIONAL CAMPUS



**5401 N University Dr, Suite 204, Coral Springs, FL 33067** **1,750 +/- SQFT**  
Coral Springs Professional Campus



- Beautiful corner office unit
- Located on 2nd floor with elevator access
- Prime location near Sawgrass Expressway
- Layout: reception area, conference room, kitchenette, large storage/printer room, and 2 corner offices with plenty of natural light

**\$750,000**

Call or text **954-224-8773** for more information!



**JOE PELAYO, CCIM, SIOR**  
BROKER  
trec@joepelayo.com  
**954.224.8773**

**TREC**  
Total Real Estate Consultants Inc.  
[www.trecfl.com](http://www.trecfl.com)

**GEORGE PELAYO**  
BROKER ASSOCIATE  
george@trecfl.com  
**954.482.1330**



NOTICE: This information has been obtained from sources believed to be reliable but has not been verified. No warranty or representation, express or implied, is made as to the condition/legal adjustments of the property (or properties) referenced or as to the accuracy or completeness of the information contained, and same is submitted subject to errors, omissions, change of price, retail or other conditions, including but not limited to withdrawal without notice, and to any special listing conditions imposed by the property owner.

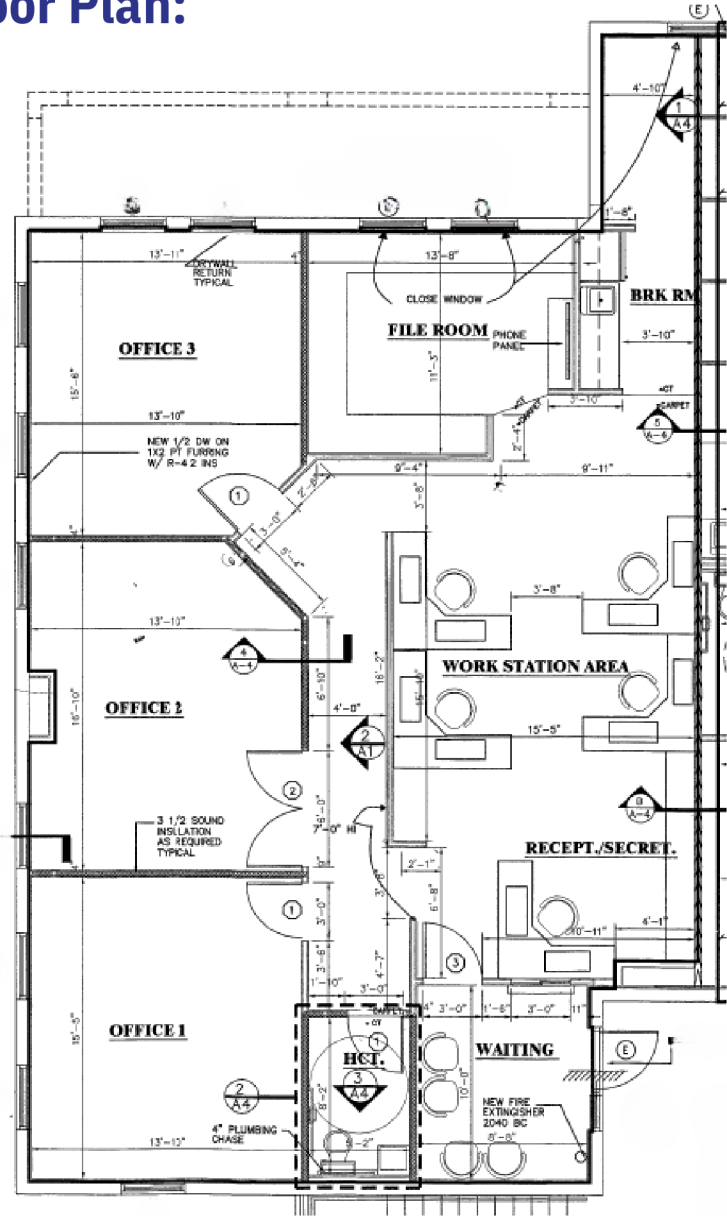


# FOR SALE CLASS A CORNER OFFICE IN CORAL SPRINGS PROFESSIONAL CAMPUS



1,750 +/- SQFT

Floor Plan:



Call or text **954-224-8773** for more information!



**JOE PELAYO, CCIM, SIOR**  
 BROKER  
 trec@joepelayo.com  
**954.224.8773**

**TREC**  
 Total Real Estate Consultants Inc.  
 www.trecfl.com

**GEORGE PELAYO**  
 BROKER ASSOCIATE  
 george@trecfl.com  
**954.482.1330**



*NOTICE: This information has been obtained from sources believed to be reliable but has not been verified. No warranty or representation, express or implied, is made as to the condition/legal adjustments of the property (or properties) referenced or as to the accuracy or completeness of the information contained, and same is submitted subject to errors, omissions, change of price, retail or other conditions, including but not limited to withdrawal without notice, and to any special listing conditions imposed by the property owner.*