

# LEASING NOW



## 4190 DOUGLAS BLVD

GRANITE BAY  
CA 95746

## GRANITE BAY BUSINESS PARK PROFESSIONAL OFFICES

### **SUITE 200 & 400 - 1,590 SF - 3,618 RSF**

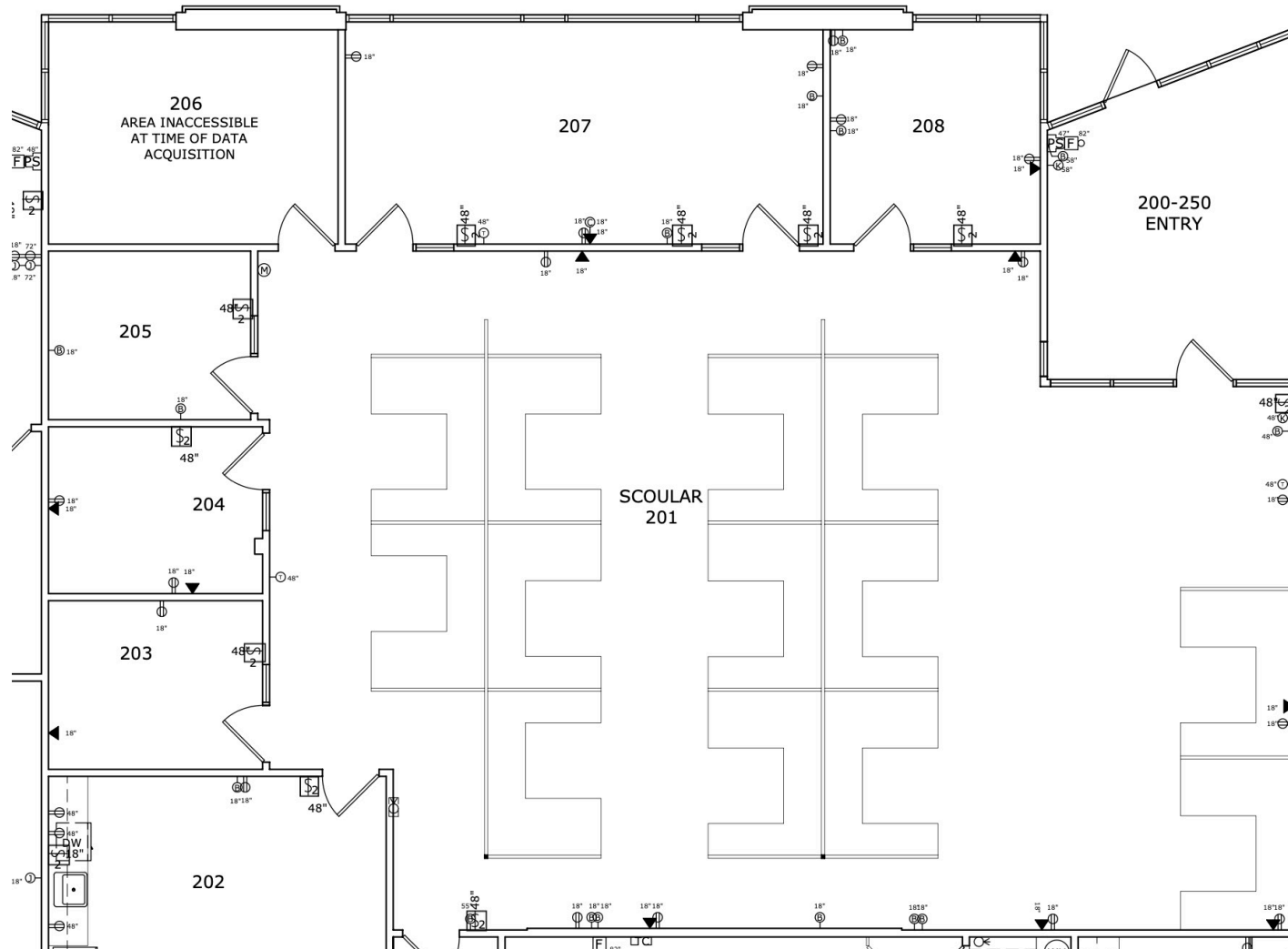


Jayna DeSoiza Byrnes | 916.638.3890 | [jayna@kcmre.com](mailto:jayna@kcmre.com)  
CA DRE #01941191

Brian Rabe | 916.601.0578 | [brabe@kcmre.com](mailto:brabe@kcmre.com)  
CA DRE #01743359

# 4190 DOUGLAS

## SUITE 200 PLANS



\*not to scale

ASKING  
\$2.05/SF FSG

SUITE 200  
3,618 SF



# 4190 DOUGLAS BLVD

OFFICE SUITES | FOR LEASE

## SUITE 200 PHOTOS



## SUITE DETAILS & HIGHLIGHTS

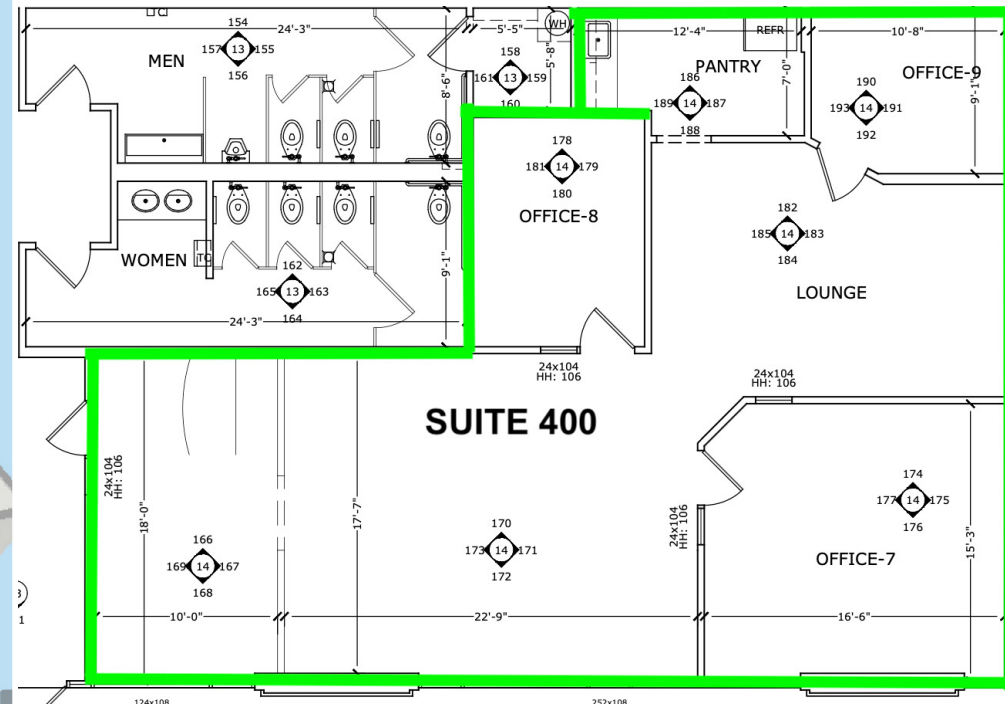
FRONT ENTRY LOBBY  
LARGE OPEN WORKSPACE  
LARGE CONFERENCE ROOM  
FIVE PRIVATE OFFICES  
LARGE BREAK ROOM

[Click HERE for 3D Tour](#)

# 4190 DOUGLAS BLVD

OFFICE SUITES | FOR LEASE

## SUITE 400 PLANS



\*not to scale

ASKING  
\$2.05/SF FSG

SUITE 400  
1,590 SF



# 4190 DOUGLAS BLVD

OFFICE SUITES | FOR LEASE

SUITE 400  
PHOTOS



**SUITE DETAILS &  
HIGHLIGHTS**

FRONT ENTRY RECEPTION AREA WITH  
PONY WALL (CAN BE REMOVED) WITH THREE PRIVATE OFFICES  
AND LARGE OPEN WORK SPACE



# 4190 DOUGLAS BLVD

OFFICE SUITES | FOR LEASE

## BUILDING OVERVIEW





# 4190 DOUGLAS BLVD

## BUSINESS PARK OVERVIEW

OFFICE SUITES | FOR LEASE



## HIGHLIGHTS

QUIET UPSCALE BUSINESS PARK REMODELED  
**COMMON AREAS**  
FIVE MINUTES TO ROSEVILLE OR FOLSOM  
TEN MINUTES TO HWY 80



# 4190 DOUGLAS BLVD LOCATION AERIAL

OFFICE SPACE | FOR LEASE

**Westfield**  
GALLERIA AT ROSEVILLE

**Raley's**

**Bayside**  
CHURCH

 **KAISER  
PERMANENTE**

