



# FOR LEASE

EAST JARRARD & CEMETERY STREET - CLEVELAND - GA - 30528

## CREEKSIDE CENTER, DOWNTOWN CLEVELAND



Highlight represents very approximate property boundaries.

### **NEWLY RENOVATED OFFICE-RETAIL-WAREHOUSE SPACE IN DOWNTOWN CLEVELAND**

- Ample Parking with all Utilities Available
  - Spaces Available: Page 2
- Build-to-Suit Options and Competitive Rates
  - White County qPublic: [Click Here](#)

## INQUIRE FOR FURTHER INFORMATION

### **CONTACT**

**CHARLIE HAWKINS**

**770.718.5206**

**[CHAWKINS@GONORTON.COM](mailto:CHAWKINS@GONORTON.COM)**

**CHRIS BRASWELL**

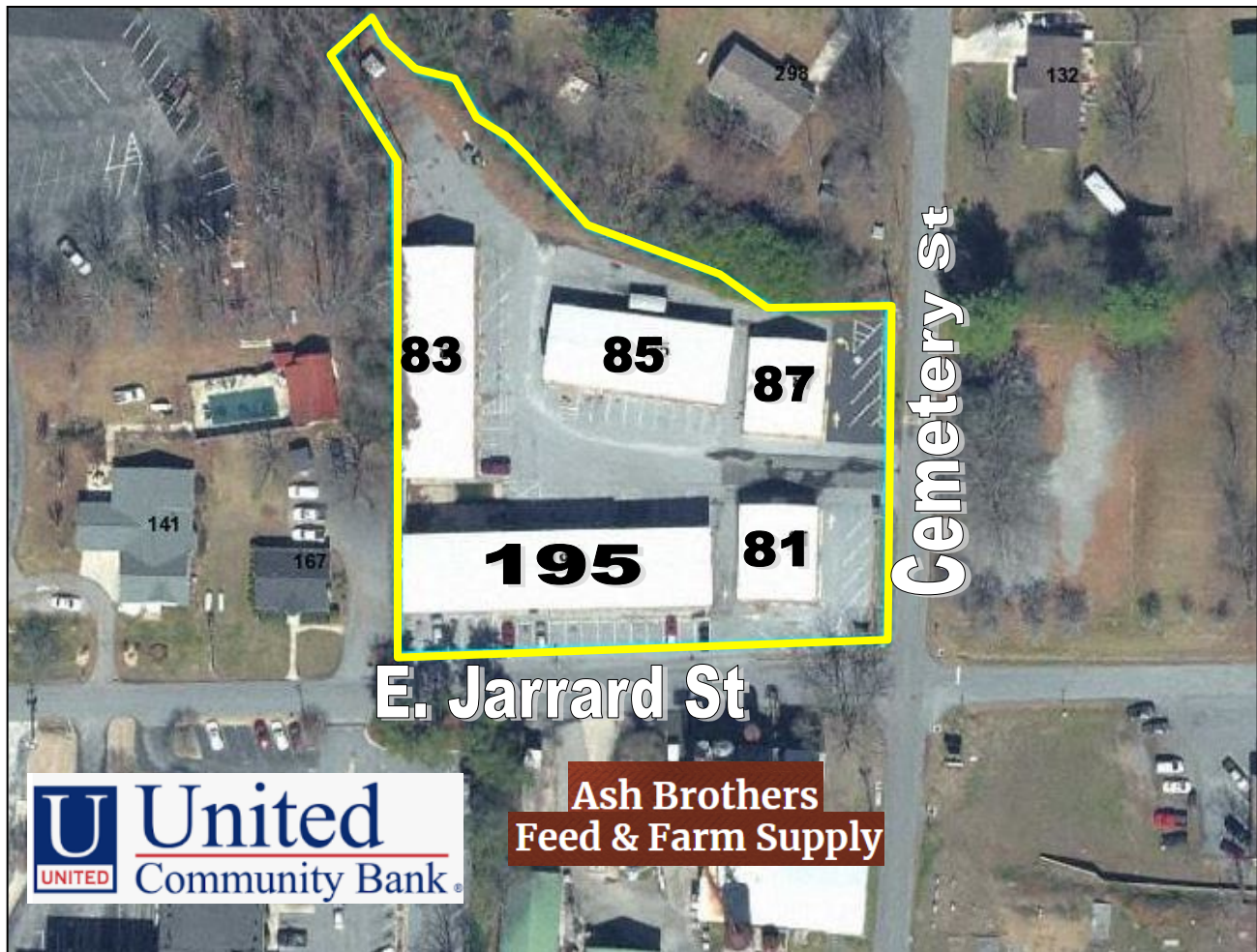
**770.718.5101**

**[CBRASWELL@GONORTON.COM](mailto:CBRASWELL@GONORTON.COM)**



# FOR LEASE

EAST JARRARD & CEMETERY STREET - CLEVELAND - GA - 30528



BUILDING 195	BUILDING 83	BUILDING 85	BUILDING 87	BUILDING 81
Multiple Suites : 1,141 - 3,423+/- SF B1: 2,162 Office/WH B3: 2,281 WH	Warehouse with 2 roll up doors: 2,500 - 5,000 +/- SF	Suite A, Office and warehouse: 2,100 +/- SF (190 Office, 1,910 WH)	Build-To-Suit Available: 2,015 +/- SF	Mainly, Open Floor Plate: 2,015 +/- SF

## CONTACT

CHARLIE HAWKINS

770.718.5206

[CHAWKINS@GONORTON.COM](mailto:CHAWKINS@GONORTON.COM)

CHRIS BRASWELL

770.718.5101

[CBRASWELL@GONORTON.COM](mailto:CBRASWELL@GONORTON.COM)



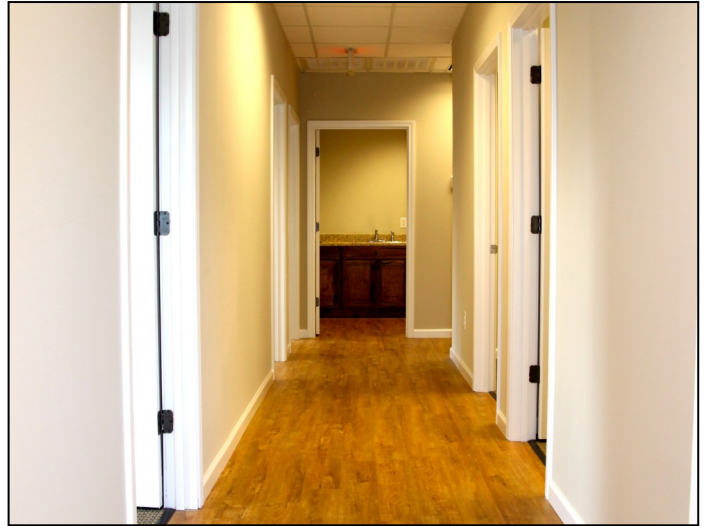


# FOR LEASE

---

EAST JARRARD & CEMETERY STREET - CLEVELAND - GA - 30528

---



## CONTACT

*CHARLIE HAWKINS*

770.718.5206

[CHAWKINS@GONORTON.COM](mailto:CHAWKINS@GONORTON.COM)

*CHRIS BRASWELL*

770.718.5101

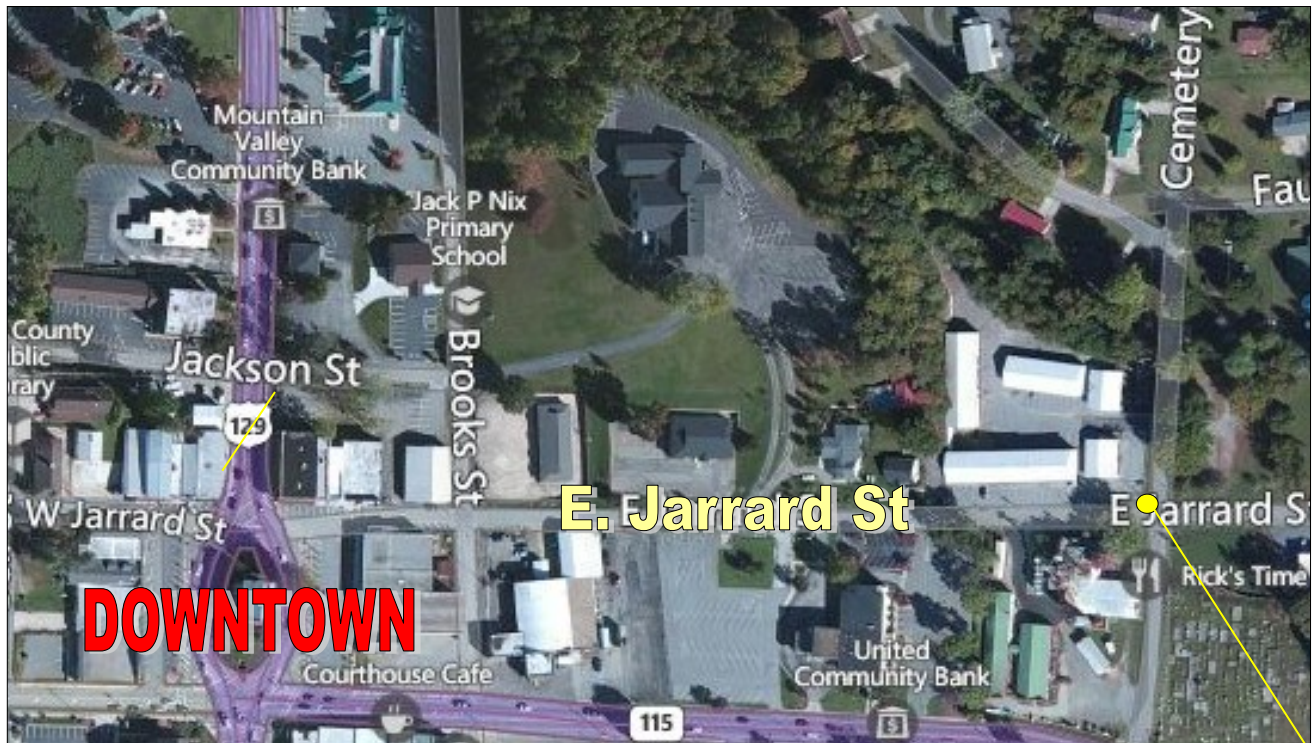
[CBRASWELL@GONORTON.COM](mailto:CBRASWELL@GONORTON.COM)





# FOR LEASE

EAST JARRARD & CEMETERY STREET - CLEVELAND - GA - 30528



## CONTACT

*CHARLIE HAWKINS*

770.718.5206

[CHAWKINS@GONORTON.COM](mailto:CHAWKINS@GONORTON.COM)

*CHRIS BRASWELL*

770.718.5101

[CBRASWELL@GONORTON.COM](mailto:CBRASWELL@GONORTON.COM)