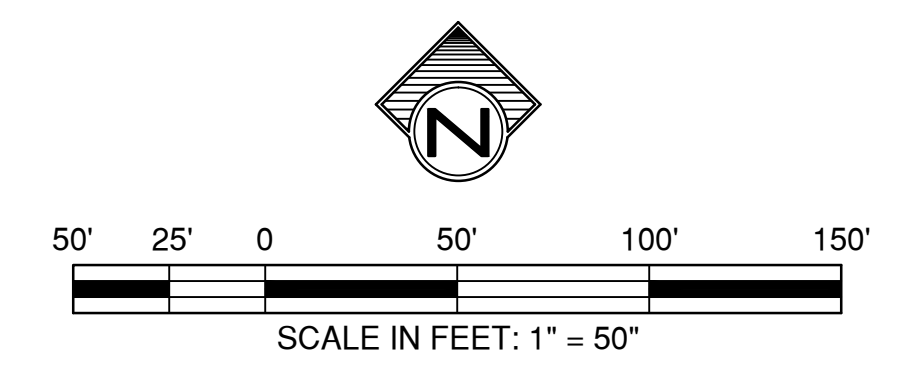
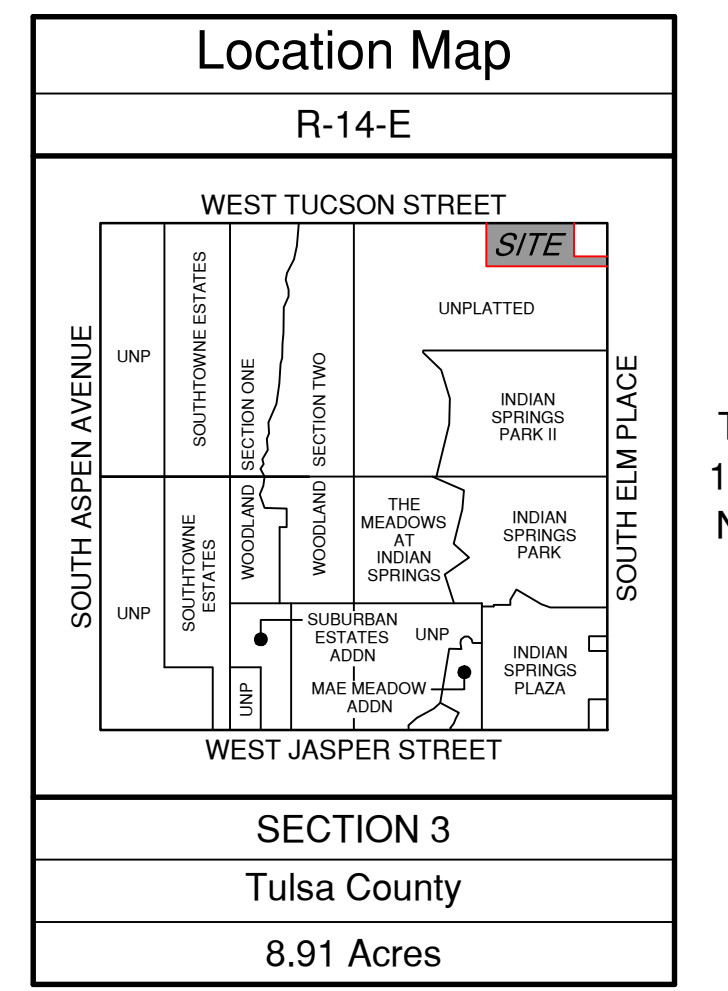
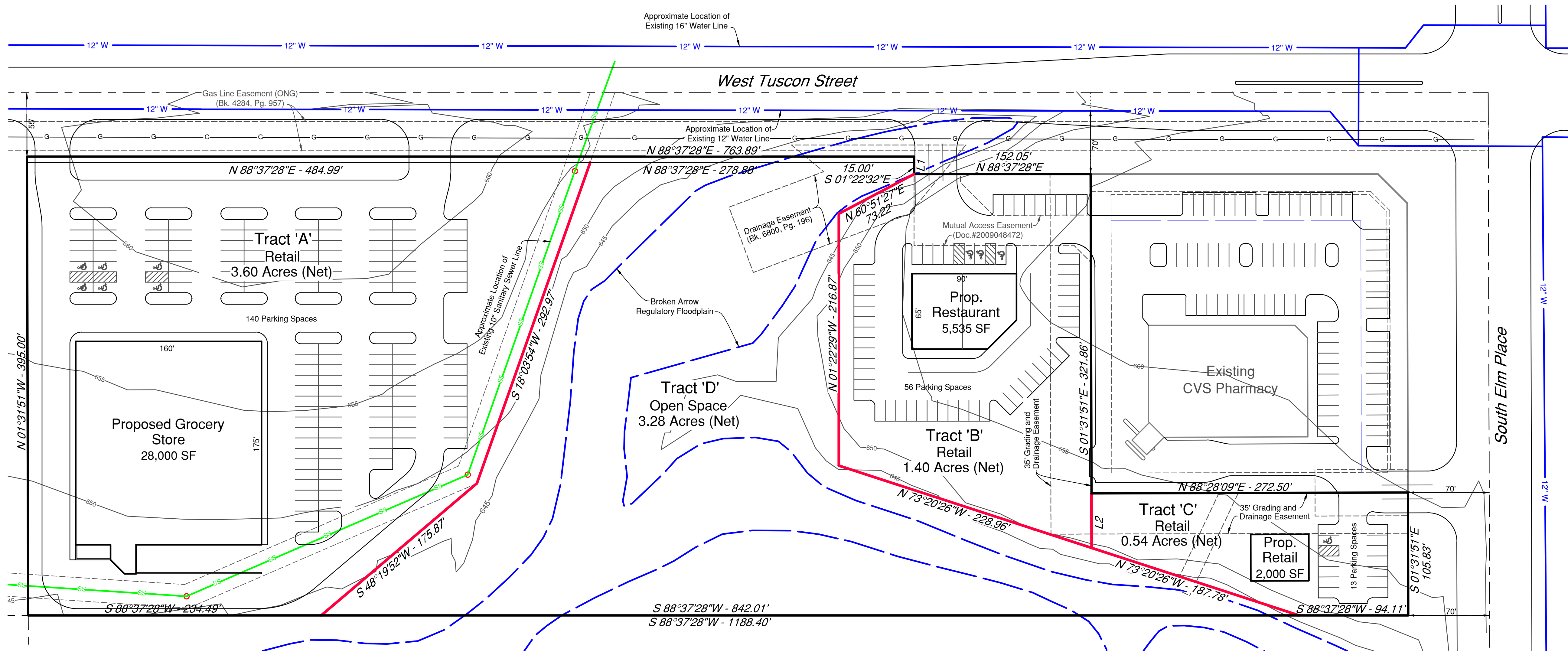


PUD 199  
Conceptual Site Plan  
**121 Elm**

**OWNER / DEVELOPER**  
Stone Horse Development, L.L.C.  
*an Oklahoma Limited Liability Company*  
C/O Pete Kouritis  
P.O. Box 240  
Owasso, Oklahoma 74055  
918.272.3282

A subdivision in the City of Broken Arrow, being a part of the NE/4 of Section 3, Township 17 North, Range 14 East, of the Indian Meridian, Tulsa County, State of Oklahoma

**ENGINEER / SURVEYOR**  
Tulsa Engineering & Planning Associates, Inc.  
*an Oklahoma corporation*  
9820 East 41st Street South, Suite 102  
Tulsa, Oklahoma 74146  
918.252.9621  
JPatMurphy@tulsaengineering.com  
CERTIFICATE OF AUTHORIZATION NO. 531  
RENEWAL DATE: JUNE 30, 2017



**Line Table**

L1	S 02°22'32"E	15.00'	L2	N 01°31'51"W	46.96'
----	--------------	--------	----	--------------	--------