

121 S LaSalle St, Durham, NC 27705

121 S LaSalle St

FOR LEASE

EXECUTIVE SUMMARY



PROPERTY OVERVIEW

Fully Heated and Cooled warehouse in close proximity to Duke University. Approximately 20% Office/Showroom. $\pm 2,000$ built out office. Two Dock High Doors. Close proximity to major highways.

LOCATION OVERVIEW

Close Proximity to Downtown Durham, Duke University, Durham Freeway, US 15-501 and I-85.

PROPERTY HIGHLIGHTS

- Vacant
- Fully Conditioned

OFFERING SUMMARY

Parcel ID:	125246
Available SF:	$\pm 24,000$ SF
Lease Rate:	\$7.95 SF/yr (NNN)
Lot Size:	± 1.88 Acres
Building Size:	$\pm 24,000$ SF
Zoning:	Light Industrial

JOHNNY WEHMANN

O: 919.287.3218

C: 919.259.3618

jwehmann@realestateassoc.com



3333 DURHAM-CHAPEL HILL BLVD, SUITE C, DURHAM, NC 27707 | REALESTATEASSOC.COM | 919.489.2000

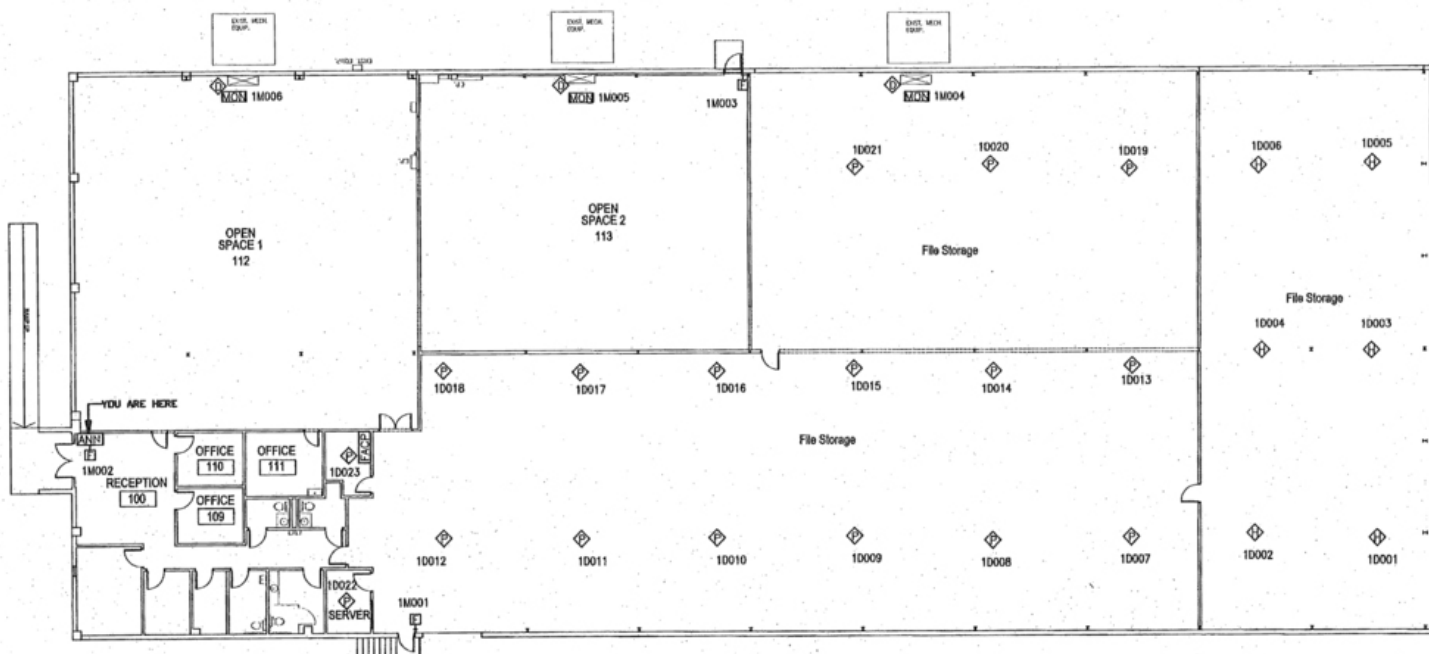
No warranty or representation, expressed or implied, is made to the accuracy of the information contained herein, and same is submitted subject to errors, omissions, change of price, rental, or other conditions, withdrawal without notice, and to any special listing conditions imposed by principals.

121 S LaSalle St, Durham, NC 27705

121 S LaSalle St

FOR LEASE

[ADDITIONAL PHOTOS](#)



JOHNNY WEHMANN

O: 919.287.3218

C: 919.259.3618

jwehmann@realestateassoc.com



3333 DURHAM-CHAPEL HILL BLVD, SUITE C, DURHAM, NC 27707 | REALESTATEASSOC.COM | 919.489.2000

No warranty or representation, expressed or implied, is made to the accuracy of the information contained herein, and same is submitted subject to errors, omissions, change of price, rental, or other conditions, withdrawal without notice, and to any special listing conditions imposed by principals.

121 S LaSalle St, Durham, NC 27705

121 S LaSalle St

FOR LEASE

SITE & FLOOR PLAN



JOHNNY WEHMANN

O: 919.287.3218

C: 919.259.3618

jwehmann@realestateassoc.com



3333 DURHAM-CHAPEL HILL BLVD, SUITE C, DURHAM, NC 27707 | REALESTATEASSOC.COM | 919.489.2000

No warranty or representation, expressed or implied, is made to the accuracy of the information contained herein, and same is submitted subject to errors, omissions, change of price, rental, or other conditions, withdrawal without notice, and to any special listing conditions imposed by principals.

121 S LaSalle St, Durham, NC 27705

121 S LaSalle St

FOR LEASE

[ADDITIONAL PHOTOS](#)



JOHNNY WEHMANN

O: 919.287.3218

C: 919.259.3618

jwehmann@realestateassoc.com



3333 DURHAM-CHAPEL HILL BLVD, SUITE C, DURHAM, NC 27707 | REALESTATEASSOC.COM | 919.489.2000

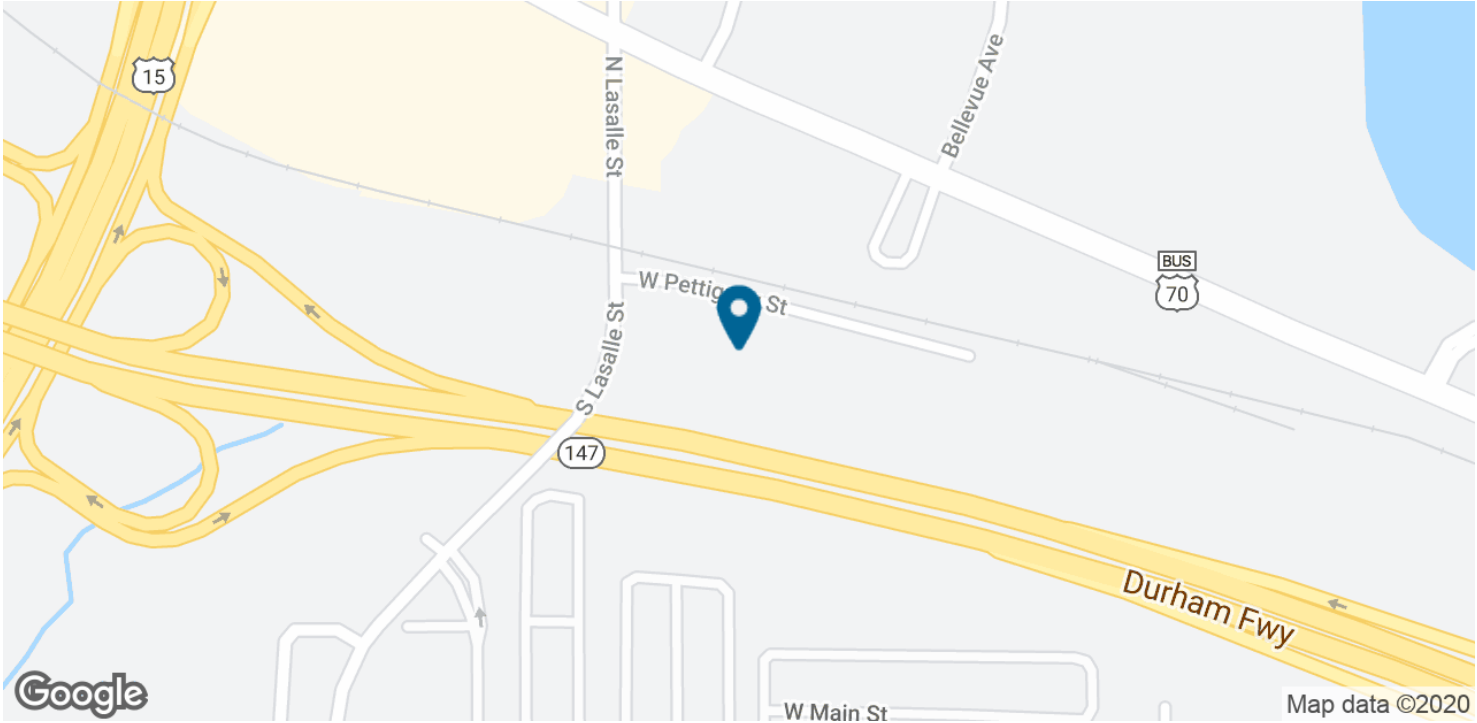
No warranty or representation, expressed or implied, is made to the accuracy of the information contained herein, and same is submitted subject to errors, omissions, change of price, rental, or other conditions, withdrawal without notice, and to any special listing conditions imposed by principals.

121 S LaSalle St, Durham, NC 27705

121 S LaSalle St

FOR LEASE

LOCATION MAPS



JOHNNY WEHMANN
O: 919.287.3218
C: 919.259.3618
jwehmann@realestateassoc.com



3333 DURHAM-CHAPEL HILL BLVD, SUITE C, DURHAM, NC 27707 | REALESTATEASSOC.COM | 919.489.2000

No warranty or representation, expressed or implied, is made to the accuracy of the information contained herein, and same is submitted subject to errors, omissions, change of price, rental, or other conditions, withdrawal without notice, and to any special listing conditions imposed by principals.

121 S LaSalle St, Durham, NC 27705

121 S LaSalle St

FOR LEASE

ADVISOR BIO & CONTACT

JOHNNY WEHMANN

Vice President - Brokerage



3333 Durham-Chapel Hill Blvd, Suite C
Durham, NC 27707
O: 919.287.3218
C: 919.259.3618
jwehmann@realestateassoc.com

PROFESSIONAL BACKGROUND

Hometown: Chapel Hill, North Carolina

Johnny Wehmann brings a 14-year background of diverse real estate experience to Real Estate Associates. While Johnny practices commercial brokerage throughout the Triangle, he has found a niche working in Chatham, Durham and Orange Counties. Before joining REA, Johnny was working as a commercial real estate broker with Sperry Van Ness. Prior to that he was at Meridian Realty in Winston-Salem where he worked in commercial property management with a focus on retail and office properties; his clients ranging from local landlords to private equity fund managers. Johnny also spent several years as a Property Manager/Broker-in-Charge focusing on Multi-Family housing with developer/owner, Ticon Properties.

Outside of work, Johnny enjoys spending time with friends and family. He can regularly be found at local music venues and sporting events. He especially loves going on outdoor adventures with his wife Catherine, daughter Laney, and their two dogs, Dash and Emmie.

EDUCATION

- Bachelors of Science Degree in Economics, East Carolina University
- Graduate, NC Realtors® Leadership Academy

MEMBERSHIPS & AFFILIATIONS

- Licensed Real Estate Broker, North Carolina
- Rising Star Award, Orange-Chatham Association of Realtors®
- Member, Triangle Commercial Association of Realtors®
- Member, Orange-Chatham Association of Realtors®
- Member, Chapel Hill-Carrboro Chamber of Commerce
- Member, Chapel Hill Young Professionals
- Member, Bull City Business Leaders
- Volunteer, Mental Health Association of the Triangle

JOHNNY WEHMANN

O: 919.287.3218
C: 919.259.3618
jwehmann@realestateassoc.com



3333 DURHAM-CHAPEL HILL BLVD, SUITE C, DURHAM, NC 27707 | REALESTATEASSOC.COM | 919.489.2000

No warranty or representation, expressed or implied, is made to the accuracy of the information contained herein, and same is submitted subject to errors, omissions, change of price, rental, or other conditions, withdrawal without notice, and to any special listing conditions imposed by principals.