

INDUSTRIAL SPACE FOR LEASE

2470 WISCONSIN AVE, DOWNERS GROVE, IL 60515



PROPERTY DESCRIPTION

Located in the Ellsworth Industrial Park with excellent access to I-35 from Maple Avenue.

OFFERING SUMMARY

Building Size	46,000 SF
Available	4,500 SF (Available May 1, 2024)
Office	2,000 SF
Ceiling Height	16' Clear
Loading	1 exterior dock
Power	200A @ 120V; 3-phase
Lease Rate	\$12.50 psf MG



MANDY LEWANDOWSKI | Vice President | 630.993.3851 | mandy@darwinpw.com



970 N Oaklawn, Suite 100 | Elmhurst, IL 60126 | Tel: 630.782.9520 | darwinpw.com

Submitted subject to error, change in status, or withdrawal without notice. Officers of this firm have an ownership interest in this property.

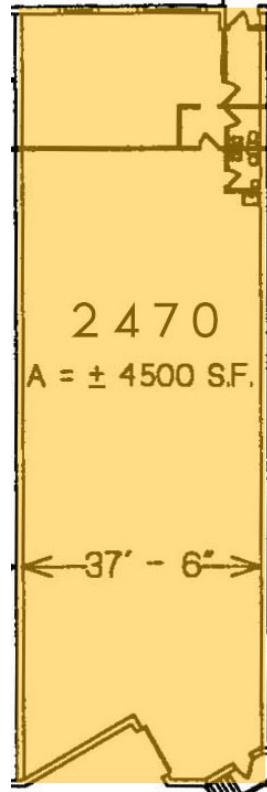
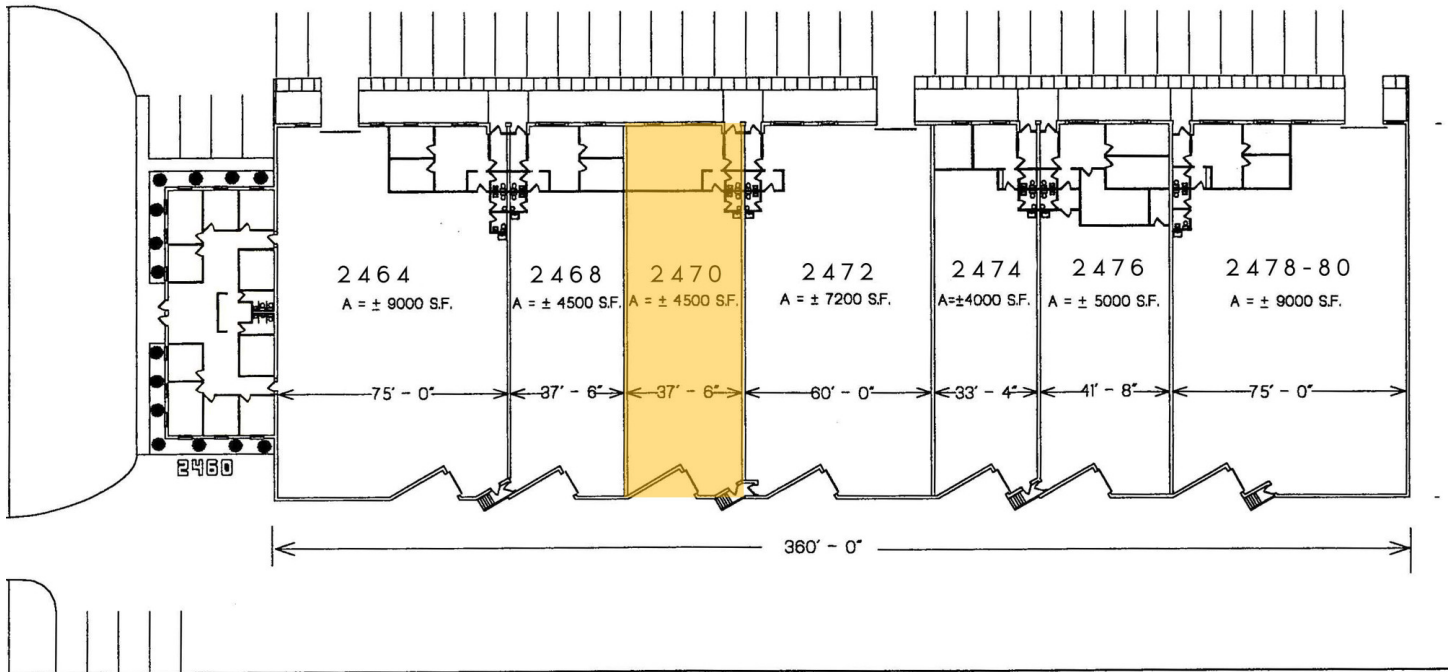
INDUSTRIAL SPACE FOR LEASE

2470 WISCONSIN AVE, DOWNERS GROVE, IL 60515



R E A L T Y

2460 - 2478 WISCONSIN AVENUE, DOWNERS GROVE



MANDY LEWANDOWSKI | Vice President | 630.993.3851 | mandy@darwinpw.com



970 N Oaklawn, Suite 100 | Elmhurst, IL 60126 | Tel: 630.782.9520 | darwinpw.com

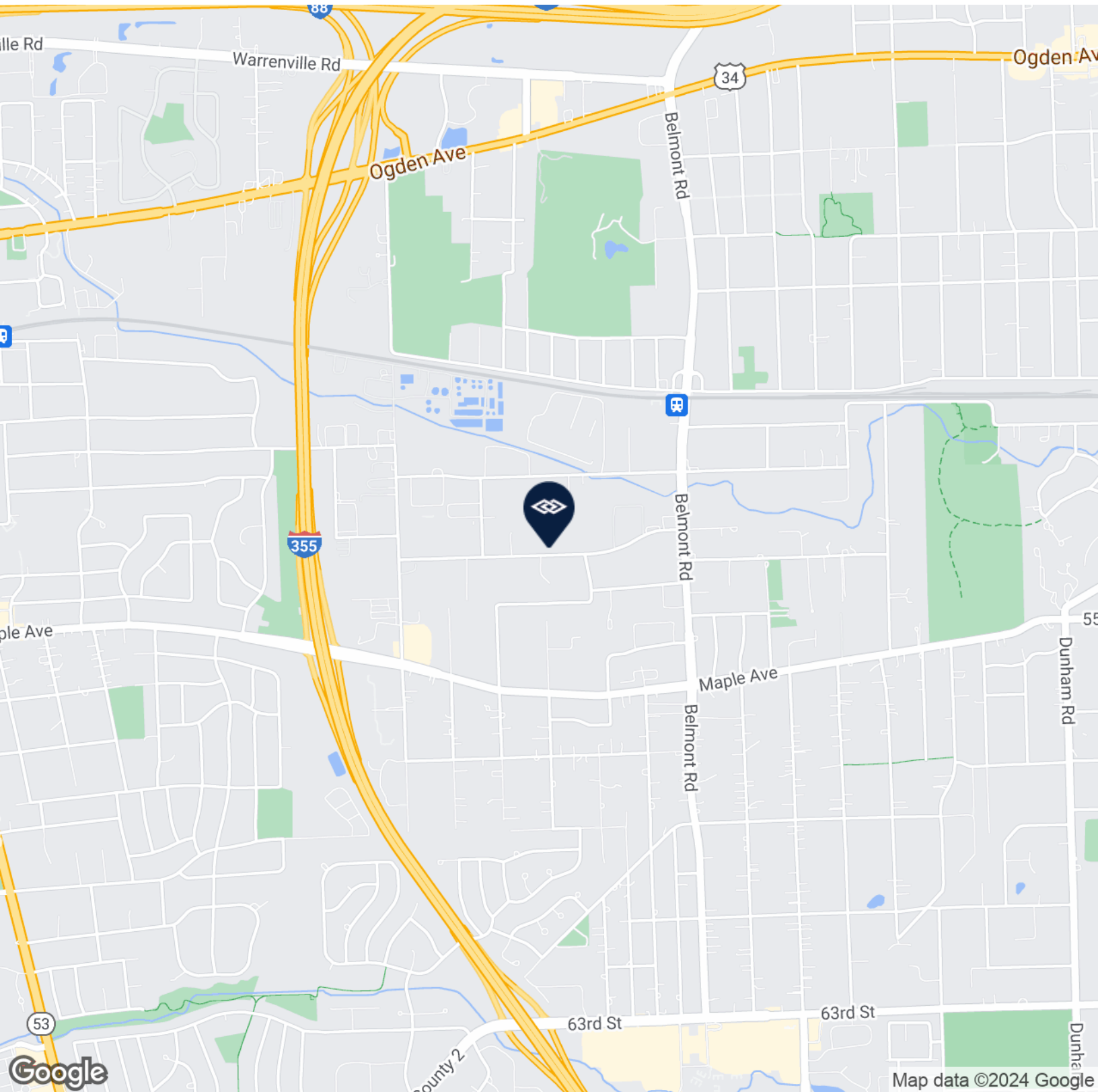
Submitted subject to error, change in status, or withdrawal without notice. Officers of this firm have an ownership interest in this property.

INDUSTRIAL SPACE FOR LEASE

2470 WISCONSIN AVE, DOWNERS GROVE, IL 60515



R E A L T Y



MANDY LEWANDOWSKI | Vice President | 630.993.3851 | mandy@darwinpw.com



970 N Oaklawn, Suite 100 | Elmhurst, IL 60126 | Tel: 630.782.9520 | darwinpw.com

Submitted subject to error, change in status, or withdrawal without notice. Officers of this firm have an ownership interest in this property.