



Tulsa Industrial For Lease

MCP MCGRAW
COMMERCIAL
PROPERTIES

NEIL DAILEY, SIOR
Executive Vice President
918.853.7337
ndailey@mcgrawcp.com

KALVIN BURGHOFF
Vice President
832.689.7095
kburghoff@mcgrawcp.com

DAKOTA BRASHER
Sales Associate
918.948.5778
dbrasher@mcgrawcp.com

4148 S 70th E Ave,
Tulsa, OK 74145

Tulsa Industrial For Lease

4148 South 70th East Avenue, Tulsa, OK 74145

Property Summary



PROPERTY DESCRIPTION

Built in 1970. Recently Renovated in 2024. Fenced-in yard.

PROPERTY HIGHLIGHTS

- New office remodel – 2024
- 7 offices built out
- 2 restrooms
- New lighting
- New flooring

OFFERING SUMMARY	
Lease Rate:	Negotiable
Building Size:	3,456 SF

NEIL DAILEY, SIOR
Executive Vice President
918.853.7337
ndailey@mcgrawcp.com

KALVIN BURGHOFF
Vice President
832.689.7095
kburghoff@mcgrawcp.com

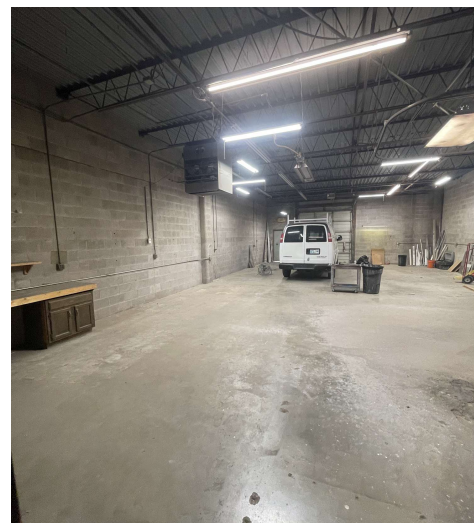
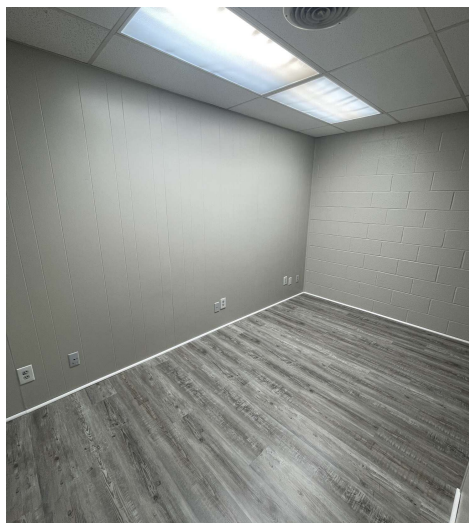
DAKOTA BRASHER
Sales Associate
918.948.5778
dbrasher@mcgrawcp.com



Tulsa Industrial For Lease

4148 South 70th East Avenue, Tulsa, OK 74145

Additional Photos



NEIL DAILEY, SIOR
Executive Vice President
918.853.7337
ndailey@mcgrawcp.com

KALVIN BURGHOFF
Vice President
832.689.7095
kburghoff@mcgrawcp.com

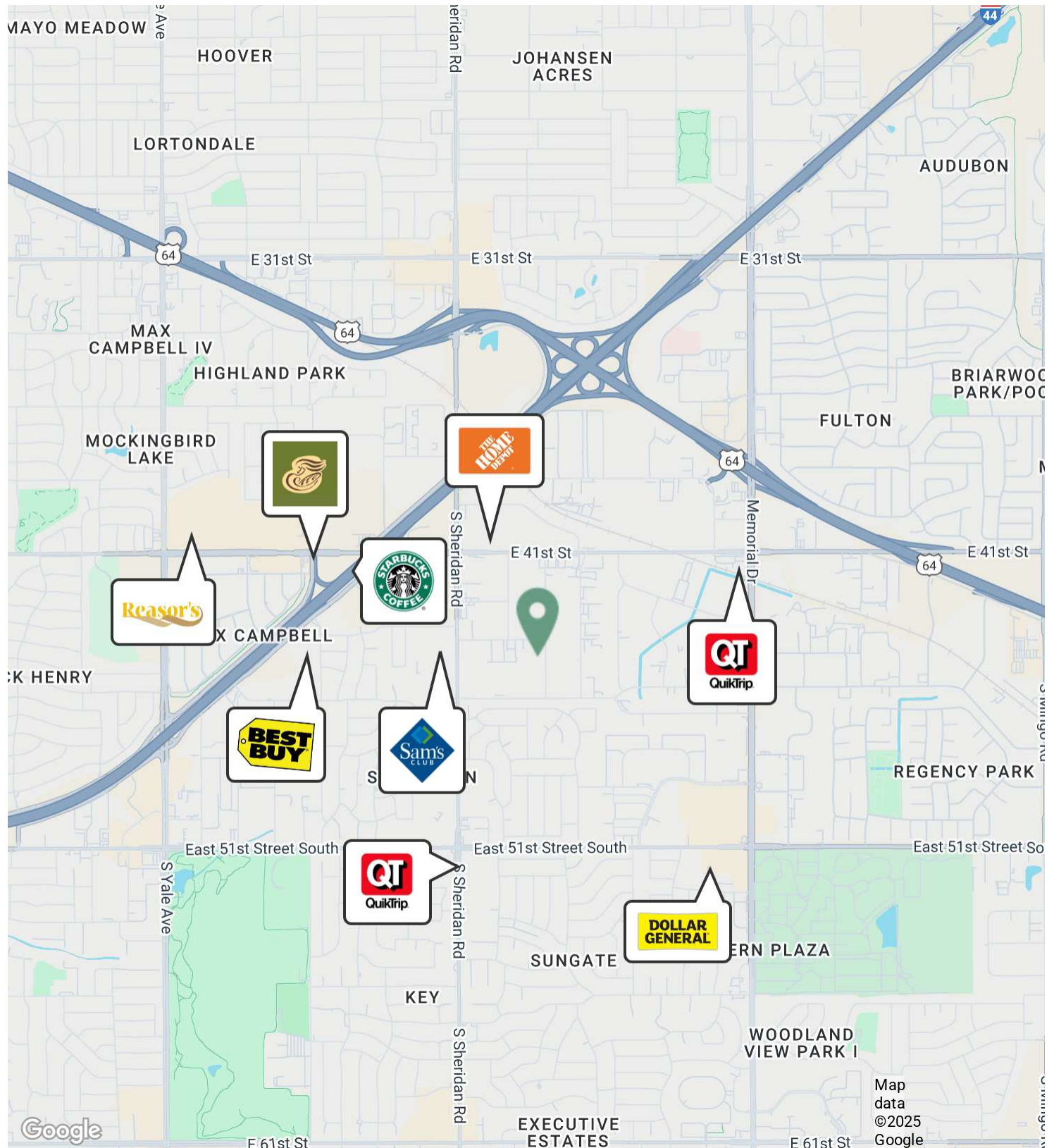
DAKOTA BRASHER
Sales Associate
918.948.5778
dbrasher@mcgrawcp.com

MCP MCGRAW
COMMERCIAL
PROPERTIES

Tulsa Industrial For Lease

4148 South 70th East Avenue, Tulsa, OK 74145

Location Map



NEIL DAILEY, SIOR
Executive Vice President
918.853.7337
ndailey@mcgrawcp.com

KALVIN BURGHOFF
Vice President
832.689.7095
kburghoff@mcgrawcp.com

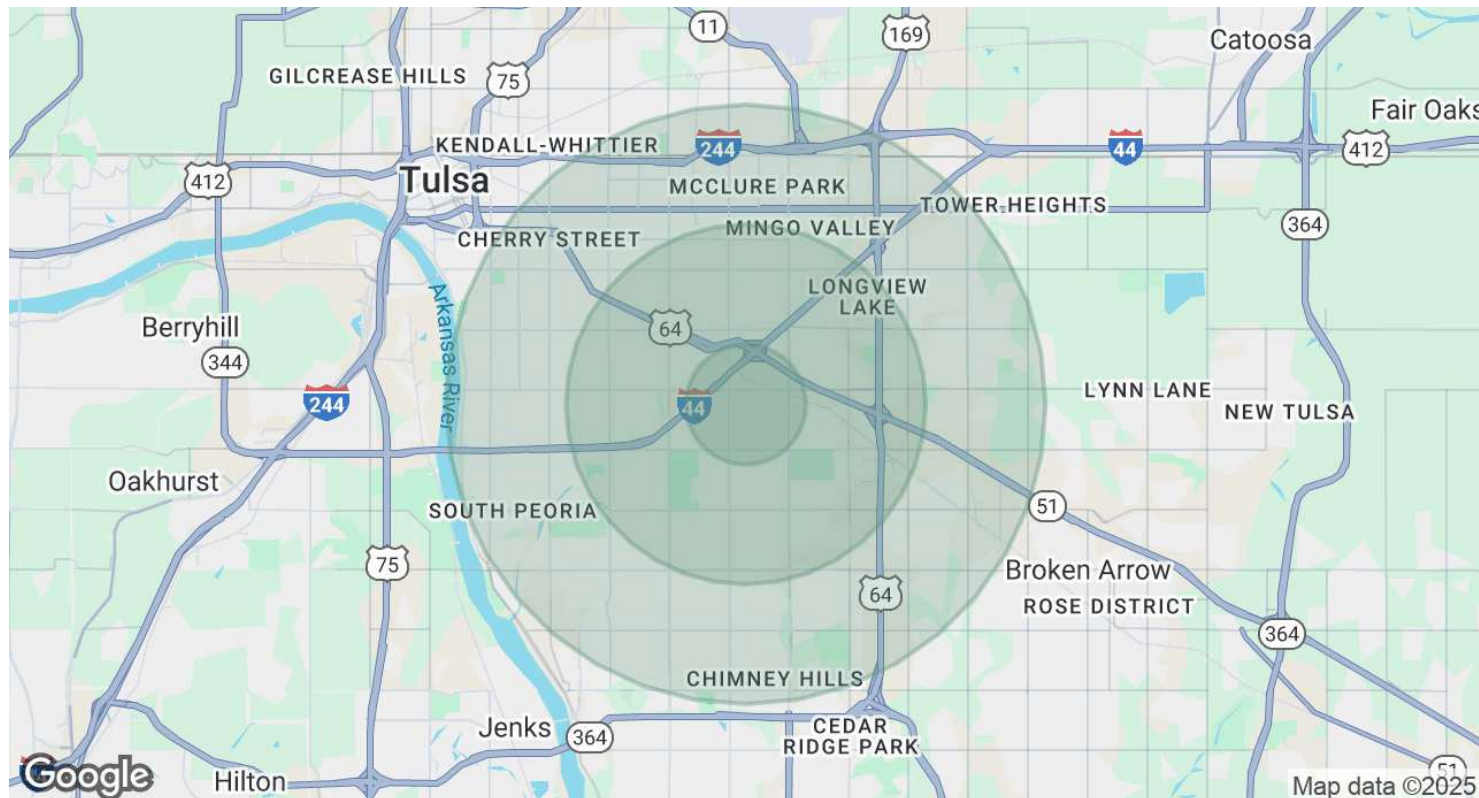
DAKOTA BRASHER
Sales Associate
918.948.5778
dbrasher@mcgrawcp.com

MCP MCGRAW
COMMERCIAL
PROPERTIES

Tulsa Industrial For Lease

4148 South 70th East Avenue, Tulsa, OK 74145

Demographics Map & Report



POPULATION	1 MILE	3 MILES	5 MILES
Total Population	8,574	88,930	263,332
Average Age	38	41	39
Average Age (Male)	37	39	38
Average Age (Female)	40	42	40

HOUSEHOLDS & INCOME	1 MILE	3 MILES	5 MILES
Total Households	3,734	39,664	112,397
# of Persons per HH	2.3	2.2	2.3
Average HH Income	\$73,430	\$77,626	\$84,059
Average House Value	\$178,138	\$228,308	\$255,365

Demographics data derived from AlphaMap

NEIL DAILEY, SIOR
Executive Vice President
918.853.7337
ndailey@mcgrawcp.com

KALVIN BURGHOFF
Vice President
832.689.7095
kburghoff@mcgrawcp.com

DAKOTA BRASHER
Sales Associate
918.948.5778
dbrasher@mcgrawcp.com

MCP MCGRAW
COMMERCIAL
PROPERTIES