



1437 W EL SEGUNDO BLVD, COMPTON, CA 90222

INDUSTRIAL WAREHOUSE



FOR LEASE

OFFERING MEMORANDUM



● SITE DESCRIPTION

IKON Properties is proud to present 1437 W El Segundo Blvd, a versatile $\pm 4,200$ SF industrial opportunity located in the heart of Compton. The property features COML zoning, two roll-up doors, multiple private offices, and a large secured yard offering excellent functionality and operational flexibility. The efficient warehouse layout is well-suited for a wide range of commercial and industrial uses.

Conveniently positioned with strong access to major freeways and surrounding industrial corridors, the property offers a strategic location for businesses seeking accessibility, yard space, and a functional industrial setup.

*All information is deemed reliable but not guaranteed, should be independently verified, and is not legal, financial, or investment advice.

PROPERTY TYPE
Industrial

RATE
\$1.45 PSF

AVAILABLE SPACE
4,200 SF

YEAR BUILT
1953

ZONING
COML



PROPERTY HIGHLIGHTS

- **Prime industrial location** along W El Segundo Blvd with strong street access and visibility
- **Functional warehouse layout** suitable for storage, distribution, or light manufacturing
- **Situated** within a dense, established industrial and logistics corridor
- **Excellent connectivity** to the 110, 105, and 710 freeways
- **Close proximity to the Ports of Los Angeles and Long Beach** for efficient freight movement
- **Excellent opportunity for tenants** seeking a strategically located industrial property

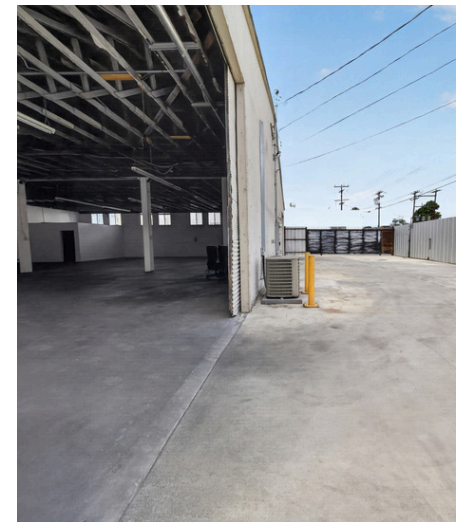


*All information is deemed reliable but not guaranteed, should be independently verified, and is not legal, financial, or investment advice.

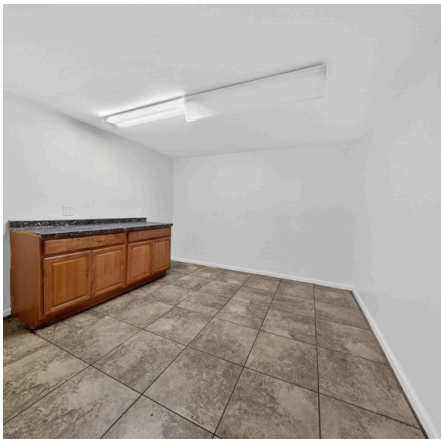
 PROPERTY PHOTOS



 PROPERTY PHOTOS



PROPERTY PHOTOS

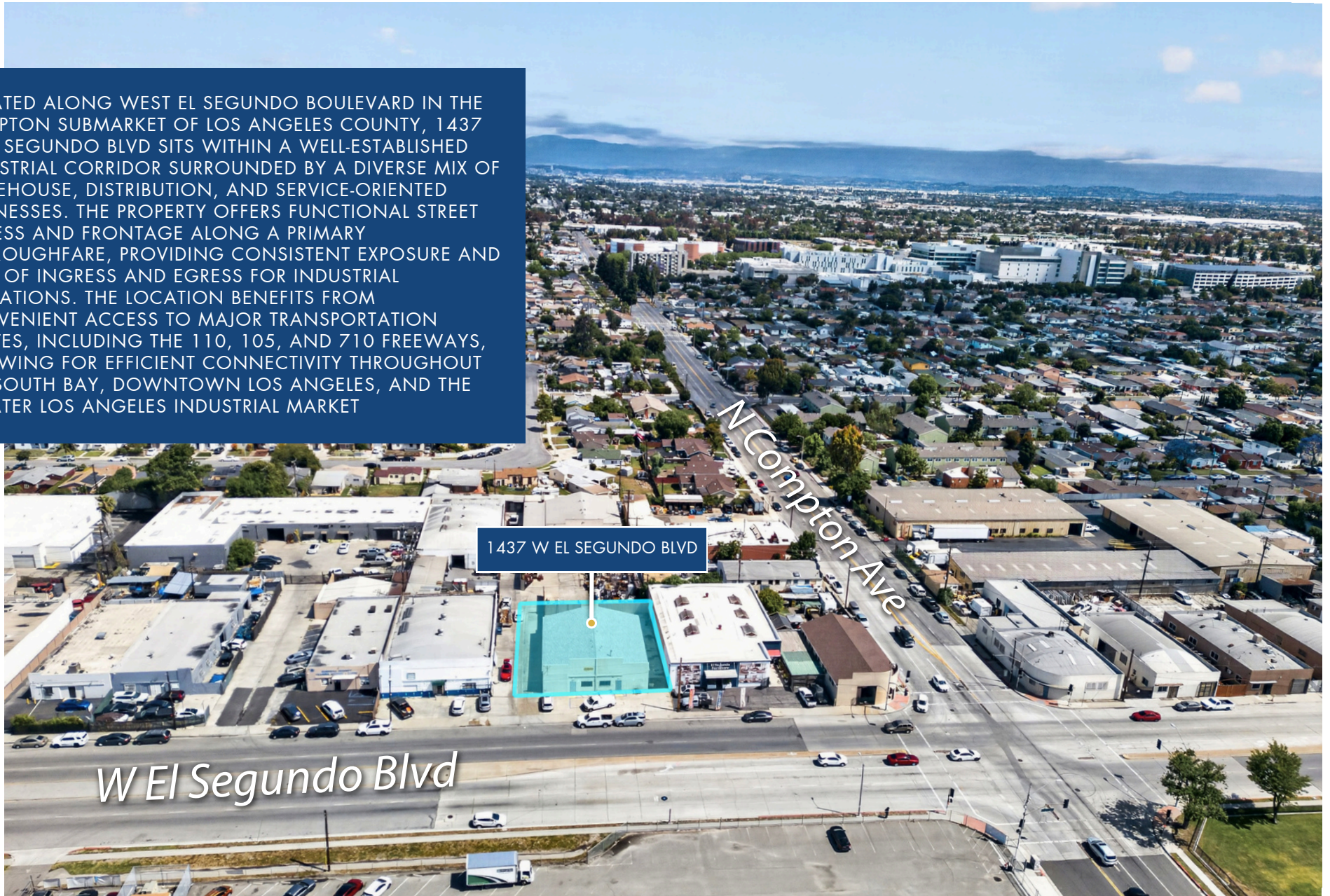


RETAIL MAP



AERIAL MAP

LOCATED ALONG WEST EL SEGUNDO BOULEVARD IN THE COMPTON SUBMARKET OF LOS ANGELES COUNTY, 1437 W EL SEGUNDO BLVD SITS WITHIN A WELL-ESTABLISHED INDUSTRIAL CORRIDOR SURROUNDED BY A DIVERSE MIX OF WAREHOUSE, DISTRIBUTION, AND SERVICE-ORIENTED BUSINESSES. THE PROPERTY OFFERS FUNCTIONAL STREET ACCESS AND FRONTAGE ALONG A PRIMARY THOROUGHFARE, PROVIDING CONSISTENT EXPOSURE AND EASE OF INGRESS AND EGRESS FOR INDUSTRIAL OPERATIONS. THE LOCATION BENEFITS FROM CONVENIENT ACCESS TO MAJOR TRANSPORTATION ROUTES, INCLUDING THE 110, 105, AND 710 FREEWAYS, ALLOWING FOR EFFICIENT CONNECTIVITY THROUGHOUT THE SOUTH BAY, DOWNTOWN LOS ANGELES, AND THE GREATER LOS ANGELES INDUSTRIAL MARKET





The information contained in the following listing is proprietary and strictly confidential. It is intended to be reviewed only by the party receiving it from IKON Properties and it should not be made available to any other person or entity without the written consent of IKON Properties. By taking possession of and reviewing the information contained herein the recipient agrees to hold and treat all such information in the strictest confidence. The recipient further agrees that the recipient will not photocopy or duplicate any part of the email content. If you have no interest in the subject property, please promptly delete this email. This email has been prepared to provide summary, unverified financial and physical information to prospective purchasers, and to establish only a preliminary level of interest in the subject property. The information contained herein is not a substitute for a thorough due diligence investigation. IKON Properties has not made any investigation, and makes no warranty or representation with respect to the income or expenses for the subject property, the future projected financial performance of the property, the size and square footage of the property and improvements, the presence or absence of contaminating substances, PCBs or asbestos, the compliance with local, state and federal regulations, the physical condition of the improvements thereon, or financial condition or business prospects of any tenant, or any tenant's plans or intentions to continue its occupancy of the subject property. The information contained in this offering memorandum has been obtained from sources we believe are reliable; however, IKON Properties has not verified, and will not verify, any of the information contained herein, nor has IKON Properties conducted any investigation regarding these matters and makes no warranty or representation whatsoever regarding the accuracy or completeness of the information provided. All potential buyers must take appropriate measures to verify all of the information set forth herein. Prospective buyers shall be responsible for their costs and expenses of investigating the subject property.





ARTHUR CHALEKIAN
MANAGING DIRECTOR, INVESTMENTS

818.634.2844
arthur@ikonpropertiesla.com
LIC NO. 01982432



JAMES VANIAN
INVESTMENT ASSOCIATE

818.262.6065
james@ikonpropertiesla.com
ikonpropertiesla.com
LIC NO. 02085069