

# HAMPTON BAYS, NEW YORK

## Tiana Plaza Shopping Center



### LOCATION

250 W Montauk Highway  
Hampton Bays, NY

### AVAILABLE

± 9,000 Total Square Feet:

- Space A: ± 4,000 SF
- Space B: ± 2,000 SF
- Space C: ± 3,000 SF

### DETAILS

- Front and Rear Entrance
- Front and Rear Parking

### TIANA PLAZA GLA

+/- 80,878 Square Feet

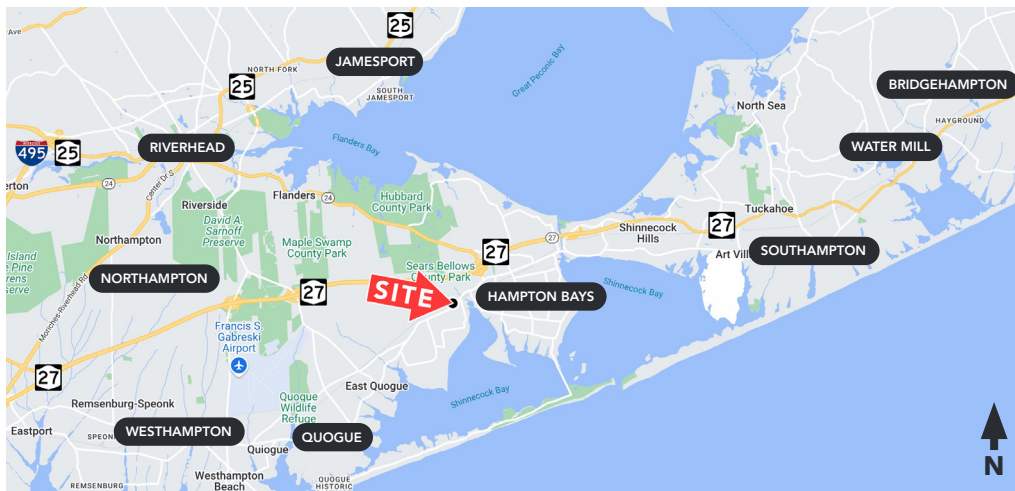
### TENANTS INCLUDE

Wild by Nature, Dollar Tree, Planet Fitness, HSBC, Domino's Pizza, Familia Bakery, Hampton Gyro & Grill, Cork & Jug Liquor Store, Blue Paws Dog Grooming, Nail Salon, Dry Cleaners, Bagel Store

### PRICE UPON REQUEST

### COMMENTS

Tiana Shopping Center is an important year-round shopping center, servicing the needs of the area's permanent residents, as well as the summer population surge which the Hamptons are famous for. Anchored by Wild by Nature, an upscale, natural food concept.



DEMOS	3 MILE	5 MILE	7 MILE
POPULATION	23,444	33,580	55,016
HOUSEHOLDS	8,115	11,693	19,893
M.H.H.I.	\$126,679	\$128,860	\$125,929

**Breslin Realty**  
DEVELOPMENT CORP.

**Robert Delavale** | VP, Leasing  
(516) 741-7400 ext. 230  
rdelavale@breslinrealty.com

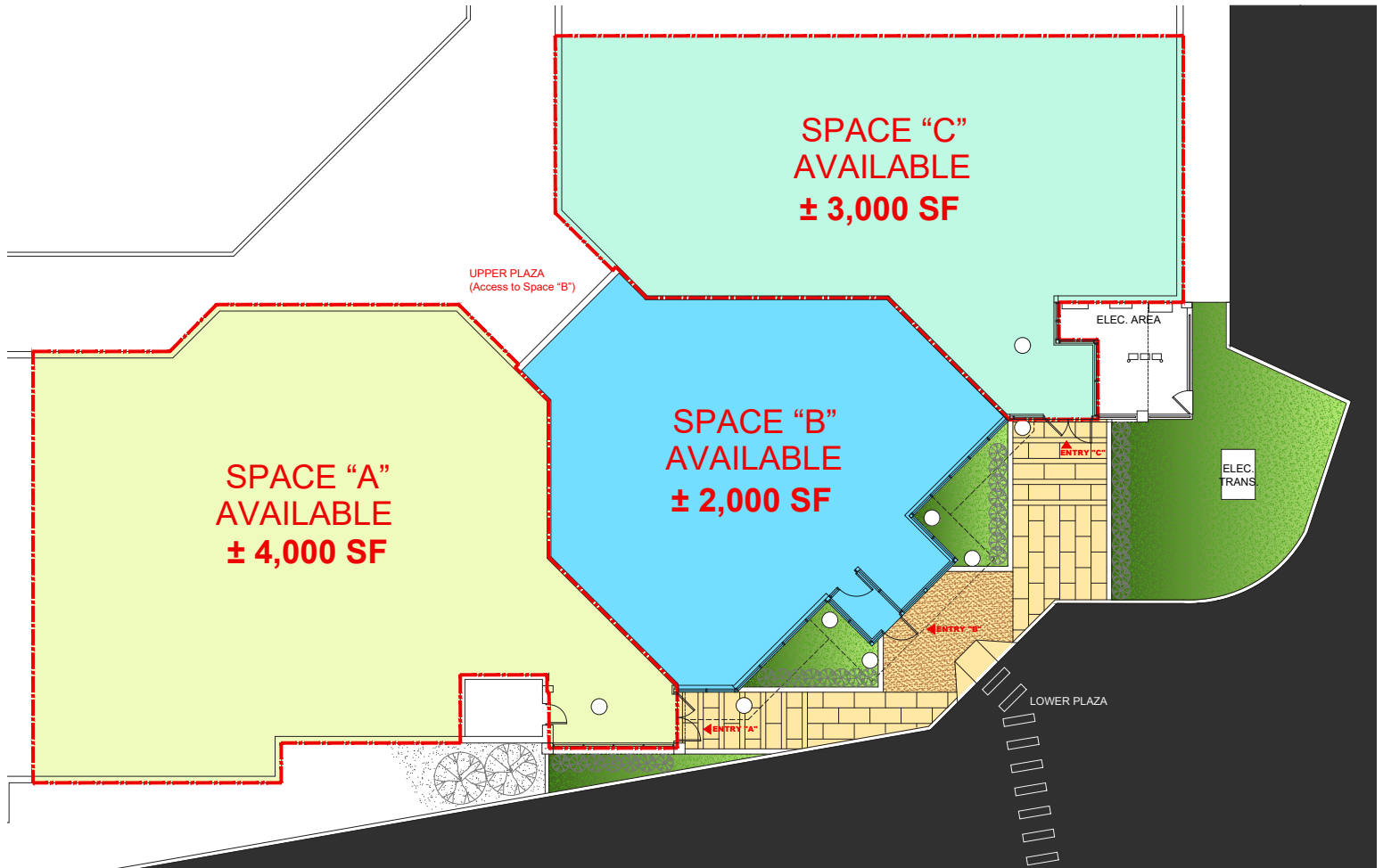
# HAMPTON BAYS, NEW YORK

## Tiana Plaza Shopping Center



# HAMPTON BAYS, NEW YORK

## Tiana Plaza Shopping Center



Floor Plan

**Breslin Realty**  
DEVELOPMENT CORP.

Breslin Realty

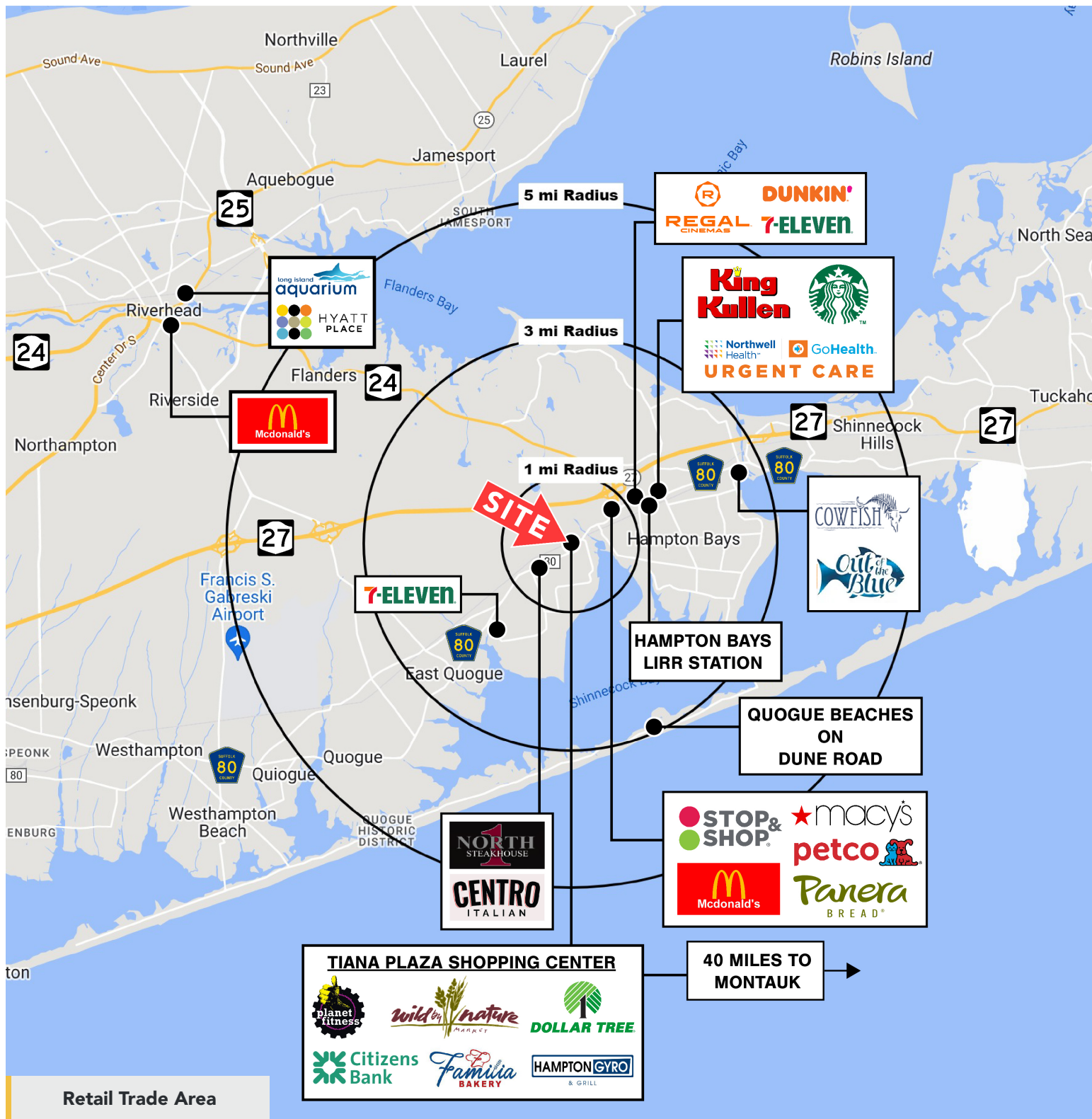
[www.breslinrealty.com](http://www.breslinrealty.com)

**Robert Delavale** | VP, Leasing  
(516) 741-7400 ext. 230  
[rdelavale@breslinrealty.com](mailto:rdelavale@breslinrealty.com)

500 Old Country Road, Garden City, NY

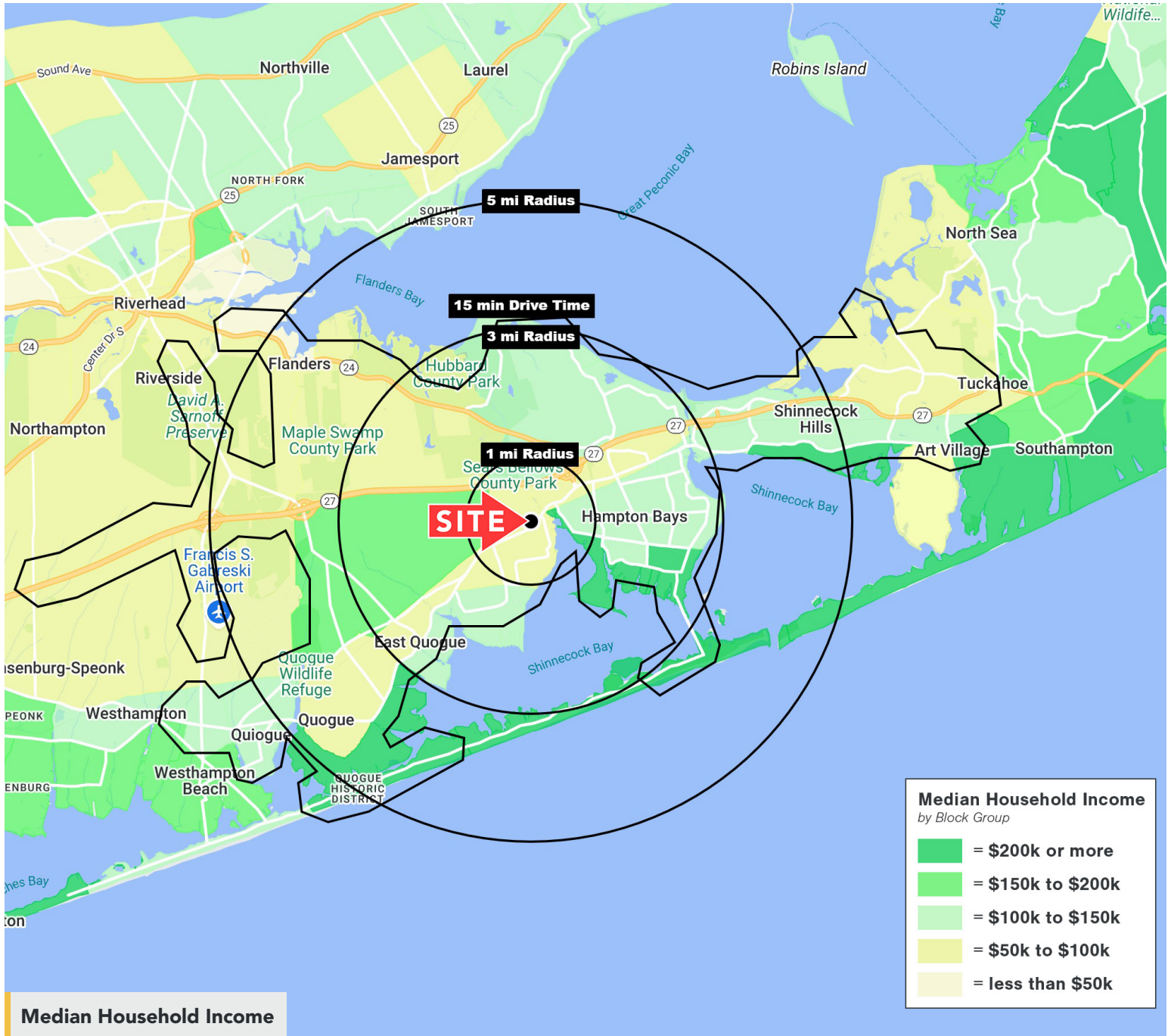
# HAMPTON BAYS, NEW YORK

## Tiana Plaza Shopping Center



# HAMPTON BAYS, NEW YORK

## Tiana Plaza Shopping Center



# HAMPTON BAYS, NEW YORK

## Tiana Plaza Shopping Center



Rear Entrance Rendering



Rear Entrance Rendering

**Breslin Realty**  
DEVELOPMENT CORP.

**Robert Delavale** | VP, Leasing  
(516) 741-7400 ext. 230  
rdelavale@breslinrealty.com

# HAMPTON BAYS, NEW YORK

## Tiana Plaza Shopping Center



Rear Entrance Renderings



Front Atrium Entrance

**Breslin Realty**  
DEVELOPMENT CORP.

**Robert Delavale** | VP, Leasing  
(516) 741-7400 ext. 230  
rdelavale@breslinrealty.com

