

BR
Bayfront Realty
(239) 571-9524

125 - 147 TOWER STREET
LAKE PLACID, FL 33582
Mid Town Center - Central Florida



THE PROPERTY

- 18,568 SF / 12 Suites
- Only 1 Suite Remaining
- Current NOI \$154,106
- Future NOI at 100% Occupancy: \$169,002

OFFICE COMPLEX FOR SALE - 6.5% CAP RATE

- Office, Retail or Medical
- Quality Tenants
- Ample Parking
- Easy Access to Hwy 27
- Overhead Door in Rear
- Storage in Rear of Suites
- Standing Seam Metal Roof
- New Paint / Sealcoat in 2021

FOR SALE
\$2,650,000

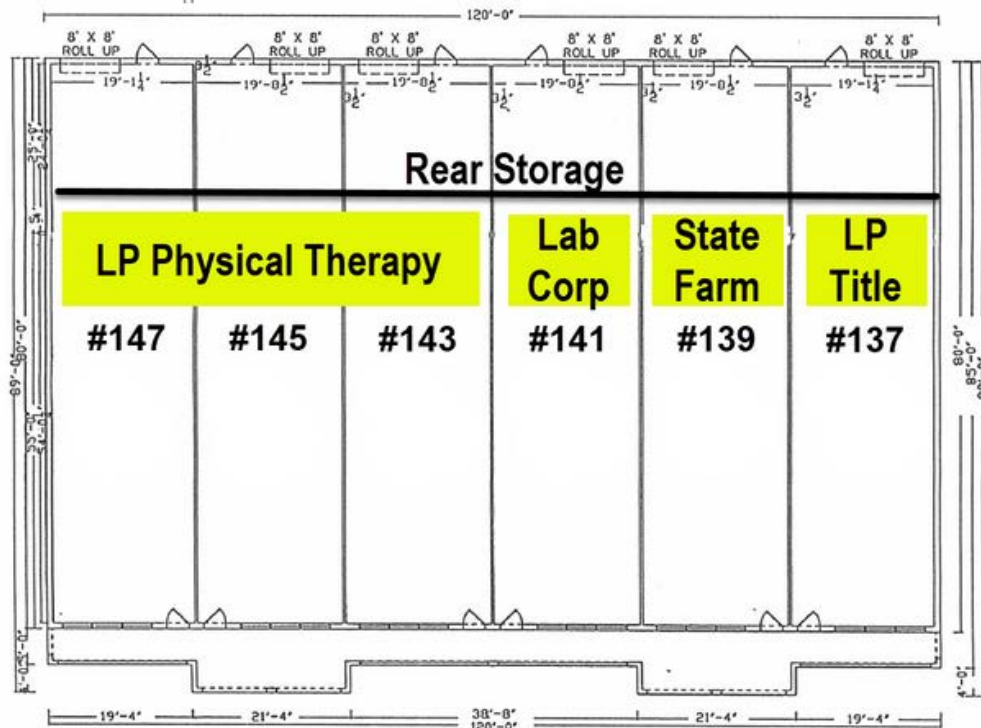
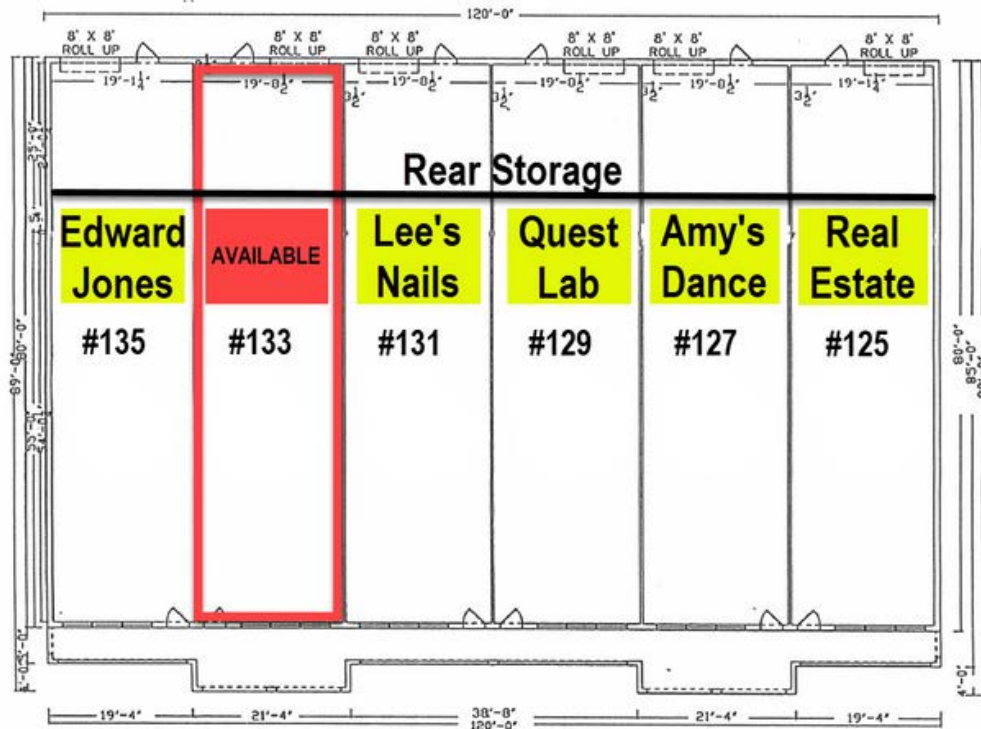
Rent Roll Available

Bayfront Realty-Broker
Bill Klohn
(239) 571-9524
bklohn@me.com



THE STATEMENTS AND FIGURES PRESENTED HEREIN, WHILE NOT GUARANTEED, ARE SECURED FROM SOURCES WE CONSIDER AUTHORITATIVE. SUBJECT TO PRIOR SALE, LEASE, WITHDRAWAL AND PRICE CHANGE WITHOUT NOTICE.

Floorplan - 12 Units - 18,568 SF



Property Pictures



125 - 147 TOWER STREET
LAKE PLACID, FL 33582
Mid Town Center - Central Florida

Location Info

Easy Access to Hwy 27

