

# FOR LEASE



**1550C Chatelain Ave.**  
**OTTAWA, ONTARIO**





**1550C Chatelain Ave.**  
**OTTAWA, ONTARIO**



**THE PROPERTIES GROUP MANAGEMENT LTD.**  
236 Metcalfe Street, Ottawa, ON K2P 1R3

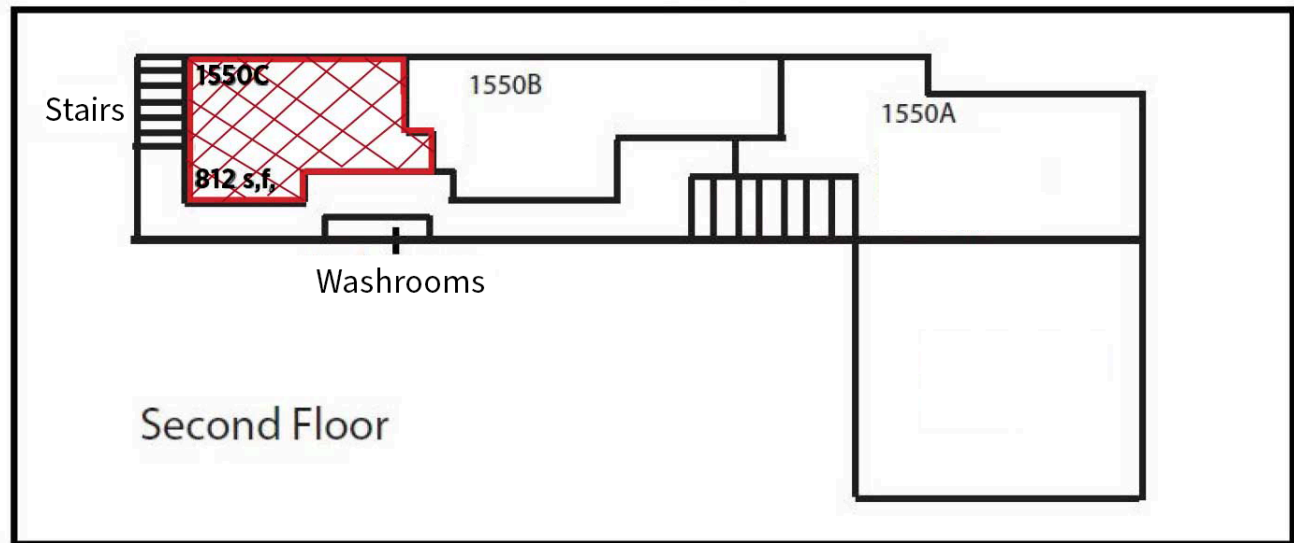
**(613) 369-5635 / [leasing@prpgrp.com](mailto:leasing@prpgrp.com)**  
**[www.thepropertiesgroup.ca](http://www.thepropertiesgroup.ca)**



**1550C Chatelain Ave.**

**OTTAWA, ONTARIO**

## FLOOR PLAN



THE ATTACHED DRAWING IS PROVIDED FOR INFORMATION PURPOSES ONLY AND SHOULD NOT BE RELIED UPON. THE LANDLORD SHALL NOT BE HELD RESPONSIBLE FOR THE PURPOSE OF THE TENANT'S WORK AND SPACE PLANNING.

## UNIT HIGHLIGHTS

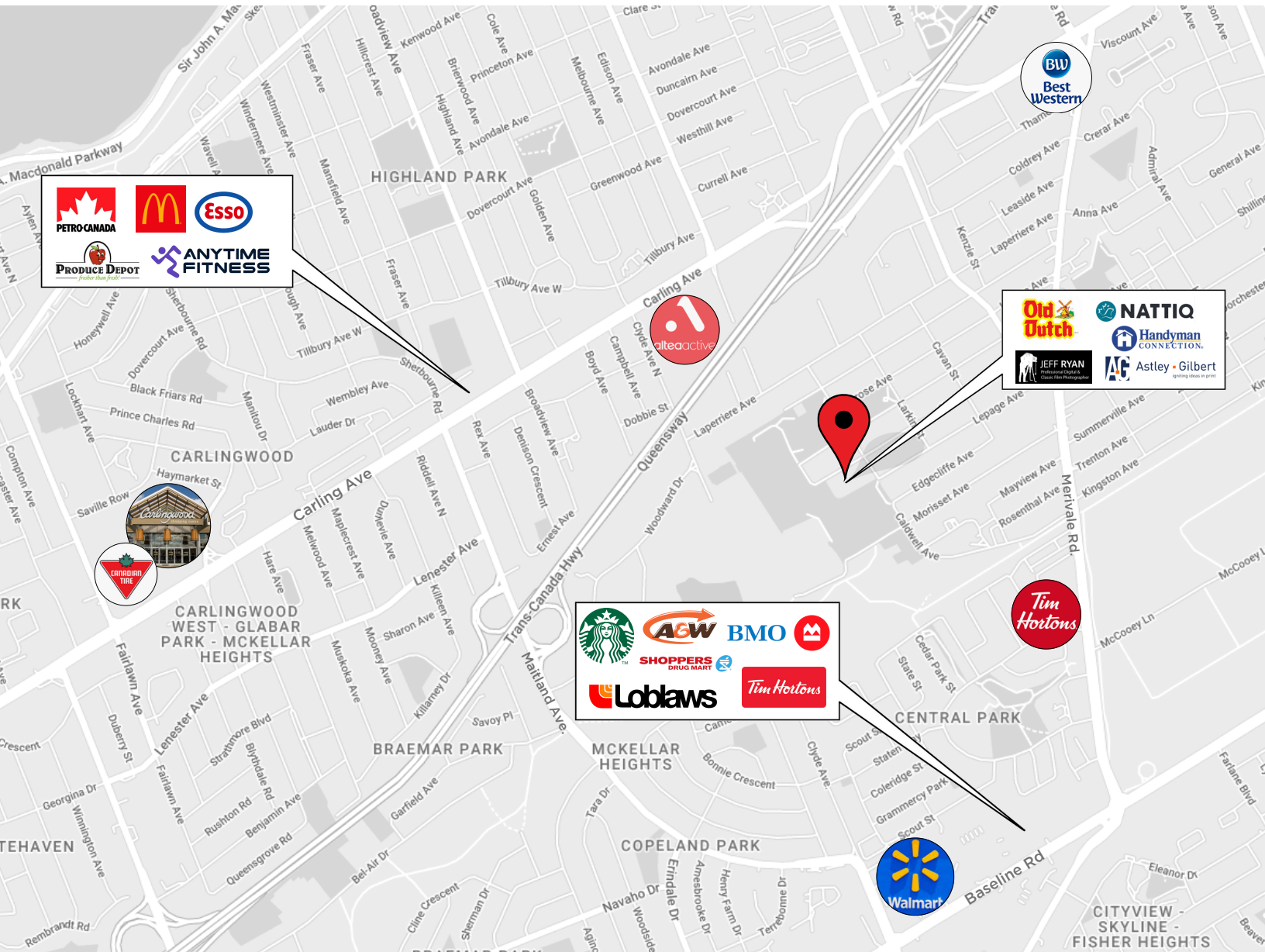
- Second floor ~812 sq. ft. unit, ideal for an office or studio.
- 5 minutes away from the Highway 417 Carling Avenue exit.
- Unit presently tenanted by a dance studio.
- Available September 1, 2026.
- On-site parking available.





**1550C Chatelain Ave.**  
**OTTAWA, ONTARIO**

## UNIT HIGHLIGHTS



Information contained herein has been obtained from sources that we deem to be reliable but is not warranted as such and does not form any part of any future contract. This offering may be altered or withdrawn at any time without notice.