

**For Lease
Medical/Office**

Lake Pointe Medical Offices

2620 Tenderfoot Hill | Colorado Springs, CO 80906



PROPERTY SUMMARY

Lake Pointe Medical Offices is located in the southern end of Colorado Springs, directly between I-25 and Hwy 115. This Broadmoor area property has Award Winning Tenants ranging from skin care, dental services, chiropractic services and more.



BUILDING FEATURES

BUILDING SIZE		14,478 SF
AVAILABLE SPACE	SIZE	LEASE RATE
	• Suite 20 (Lower)	\$15.00 PSF
	• Suite 210	\$18.00 PSF
NNN (Est. 2025)		\$9.50 PSF
YEAR BUILT		2004
ZONING		PBC

Greg Kaufman
Principal
c: 719.229.8041
gkaufman@kcreadvisors.com

KCRE Advisors, LLC
13540 Northgate Estates Dr, STE 110
Colorado Springs, CO 80921
o: 719.309.3900
www.kcreadvisors.com

Philip Crow
Broker Associate
c: 719.985.9867
pcrow@kcreadvisors.com

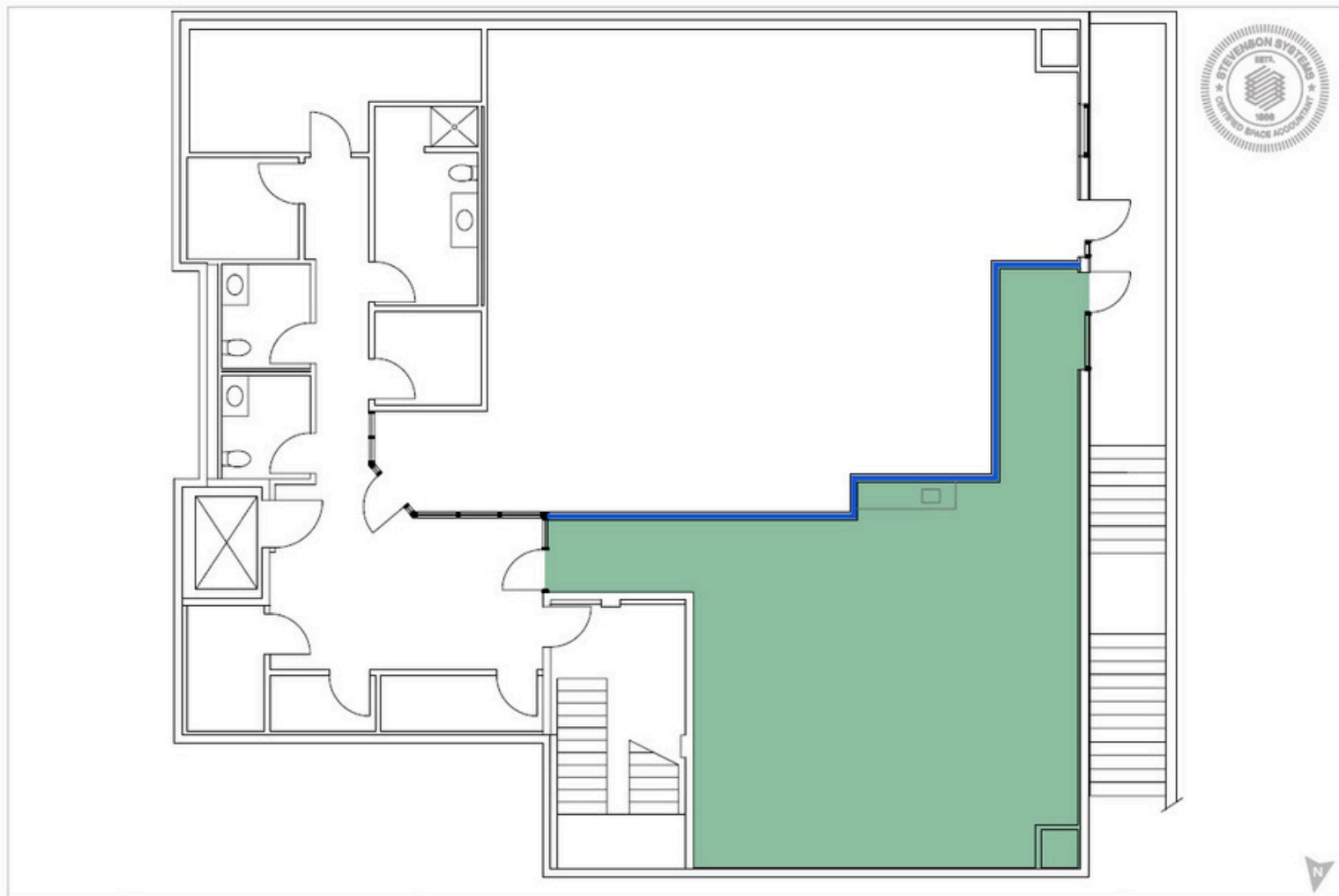


**For Lease
Medical/Office**

Lake Pointe Medical Offices

2620 Tenderfoot Hill | Colorado Springs, CO 80906

Suite 20 | 1,182 SF



Greg Kaufman
Principal
c: 719.229.8041
gkaufman@kcreadvisors.com

KCRE Advisors, LLC
13540 Northgate Estates Dr, STE 110
Colorado Springs, CO 80921
o: 719.309.3900
www.kcreadvisors.com

Philip Crow
Broker Associate
c: 719.985.9867
pcrow@kcreadvisors.com

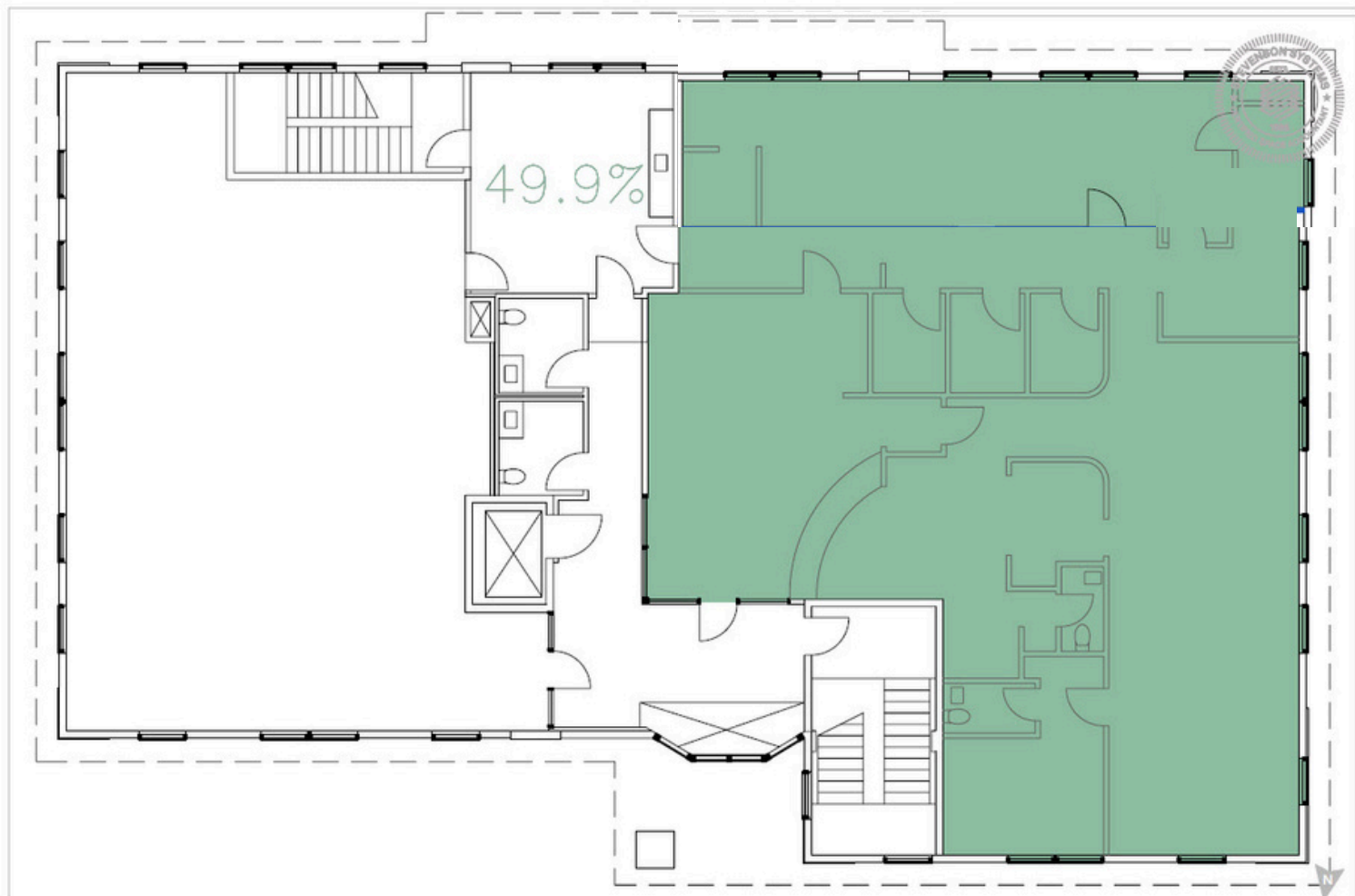


**For Lease
Medical/Office**

Lake Pointe Medical Offices

2620 Tenderfoot Hill | Colorado Springs, CO 80906

Suite 210 | 3,388 SF



Greg Kaufman
Principal
c: 719.229.8041
gkaufman@kcreadvisors.com

KCRE Advisors, LLC
13540 Northgate Estates Dr, STE 110
Colorado Springs, CO 80921
o: 719.309.3900
www.kcreadvisors.com

Philip Crow
Broker Associate
c: 719.985.9867
pcrow@kcreadvisors.com



For Lease Medical/Office

Lake Pointe Medical Offices

2620 Tenderfoot Hill | Colorado Springs, CO 80906



DEMOGRAPHICS

	1 Mile	3 Mile	5 Mile
2024 POPULATION	11,816	84,845	219,053
HOUSEHOLDS	5,421	35,583	87,405
AVE HH INCOME	\$73,891	\$135,362	\$128,023

COMBINED TRAFFIC COUNTS

Lake Avenue	Tenderfoot Hill Street E	27,098	VPD	2022
-------------	--------------------------	--------	-----	------

*Sourced by CoStar

Surrounding businesses and restaurants:



Greg Kaufman
Principal
c: 719.229.8041
gkaufman@kcreadvisors.com

KCRE Advisors, LLC
13540 Northgate Estates Dr, STE 110
Colorado Springs, CO 80921
o: 719.309.3900
www.kcreadvisors.com

Philip Crow
Broker Associate
c: 719.985.9867
pcrow@kcreadvisors.com

