

FOR LEASE

± 1,685 SF

Retail | Anchorless Center

558 E Riverside Dr

Ste 204

St. George, UT 84790

The logo for NAI Excel, featuring the letters 'NAI' in a stylized font with a red diagonal line through the 'A', followed by the word 'Excel' in a bold, sans-serif font.

COMMERCIAL REAL ESTATE SERVICES, WORLDWIDE

77765



COMMERCIAL REAL ESTATE SERVICES, WORLDWIDE

243 E. St. George Blvd. Suite 200
St George, Utah 84770
435.628.1609 | naixel.com

558 E Riverside Dr
Ste 204
St. George, UT 84790

Jason Griffith, CCIM
435.627.5709
jasong@naixel.com

Offering Memorandum

Terms and Conditions

This offering, including any related digital marketing, contains selected information pertaining to the Property and does not purport to be a representation of the state of the Property, to be all-inclusive, or to contain all or part of the information which interested parties may require to evaluate a purchase or lease of real property.

Financial Information

Any and all financial projections and information are provided for general reference purposes only and have been gathered from sources deemed reliable. Certain assumptions have been made relating to the general economy, market conditions, competition and other factors beyond the control of seller and NAI Excel. Therefore, all projections, assumptions and other information provided and made herein are subject to material variation.

Summary Documents

Additionally, all references to acreage, square feet, and other measurements are approximations. Any demographics, geographic information systems(GIS), maps, photography, zoning, site plan, survey, engineering, architectural drawings, and any other information are without assurance of their accuracy, time sensitivity, completeness, or status of approval. Documents presented may be preliminary, have no assurance of being "as built", and may not reflect actual property boundaries or improvements. Additional information and an opportunity to inspect the Property can be made available to qualified parties. In this Memorandum, certain documents are described in summary form. These summaries do not purport to be complete nor necessarily accurate descriptions of the full documents referenced herein. Interested parties are expected to review and confirm all such summaries and other documents of whatever nature independently and not rely on the contents of this Memorandum in any manner.

Non-Warranty

Neither the seller or NAI Excel, nor any of their respective directors, officers, Affiliates or representatives make any representation or warranty, expressed or implied, as to the accuracy or completeness of this Offering Memorandum or any of its contents, as to the financial performance of the property, or as to the condition of the Property, malfunctions or mechanical defects on the Property or to any improvements thereon, including but not limited to the material, workmanship or mechanical components of the structures, foundations, roof, heating, plumbing, electrical or sewage system, drainage or moisture conditions, air conditioning, or damage by the presence of pests, mold or other organisms, environmental condition, soils conditions, the zoning of the Property, the suitability of the Property for Interested parties intended use or purpose, or for any other use or purpose.

No Obligation

No legal commitment or obligation shall arise by reason of your receipt of this Memorandum or use of its contents; Interested Parties are to rely solely on its investigations and inspections of the Property in evaluating a possible purchase or lease of the real property. The seller expressly reserves the right, at its sole discretion, to reject any or all offers to purchase or lease the Property, and/or to terminate discussions with any entity at any time, with or without notice, which may arise as a result of review of this Memorandum.

Confidentiality

By receipt of this Memorandum, you agree that this Memorandum and its contents are confidential in nature, that you will hold and treat such in the strictest confidence and that you will not disclose this Memorandum, or any of its contents, to any other entity without the prior written authorization of the seller or NAI Excel.

Property Summary

LEASED PRICE	\$1.55/SF/NNN
AVAILABLE SQFT	± 1,685 SF
YEAR BUILT	2007
TYPE	Retail Anchorless Center
ZONING	C-3
TAX ID	SG-5-2-31-2105

- High-end buildout.
- Downstairs retail location.
- Ease access from I-15 & downtown



OR TEXT 22668 TO 39200

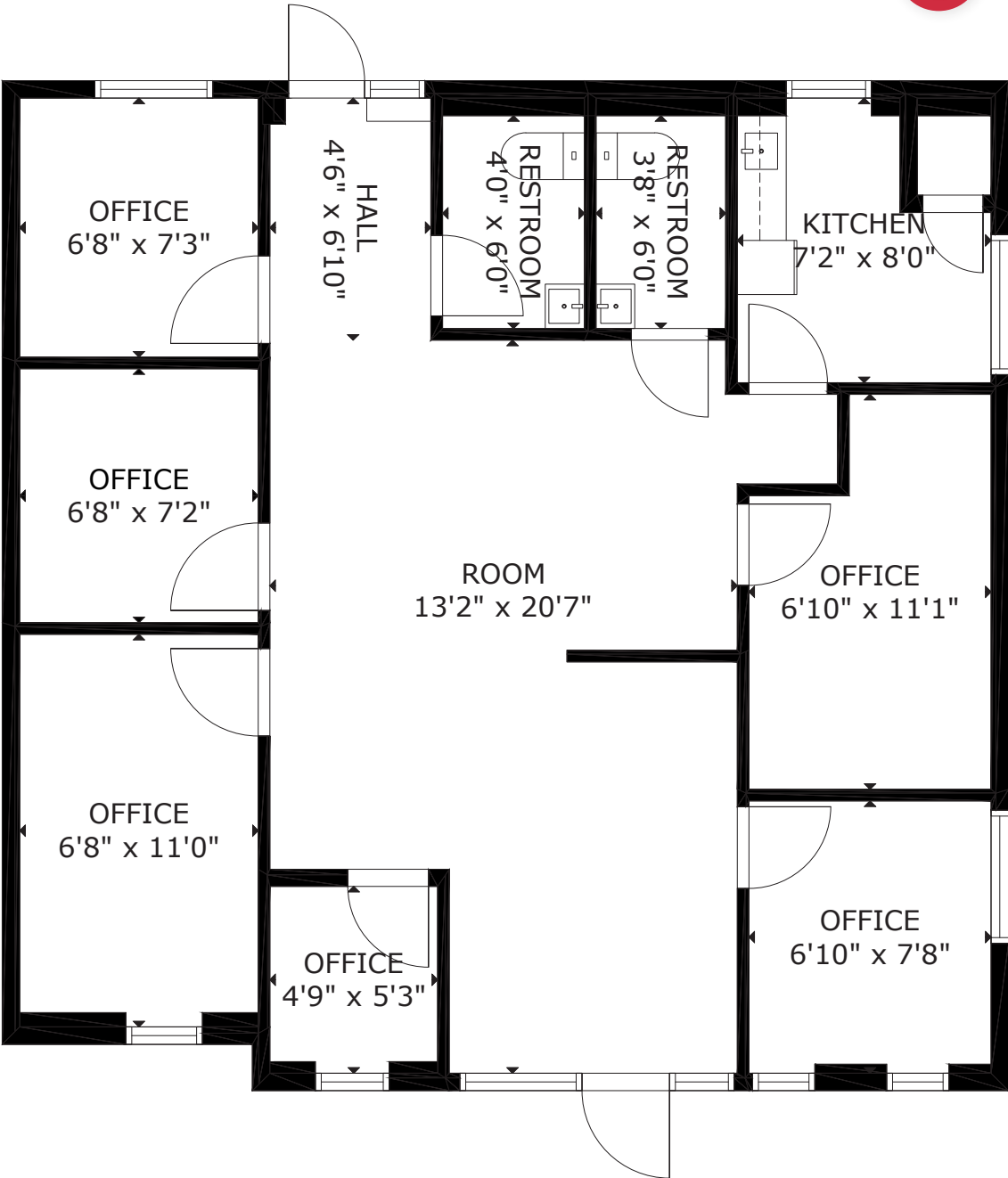
Message frequency will vary. Message and data rates may apply. Reply HELP for help or STOP to cancel.

[ARTI Terms of Service](#) | [ARTI Privacy Statement](#)

Floor Plan



[CLICK HERE](#)
FOR 3D TOUR





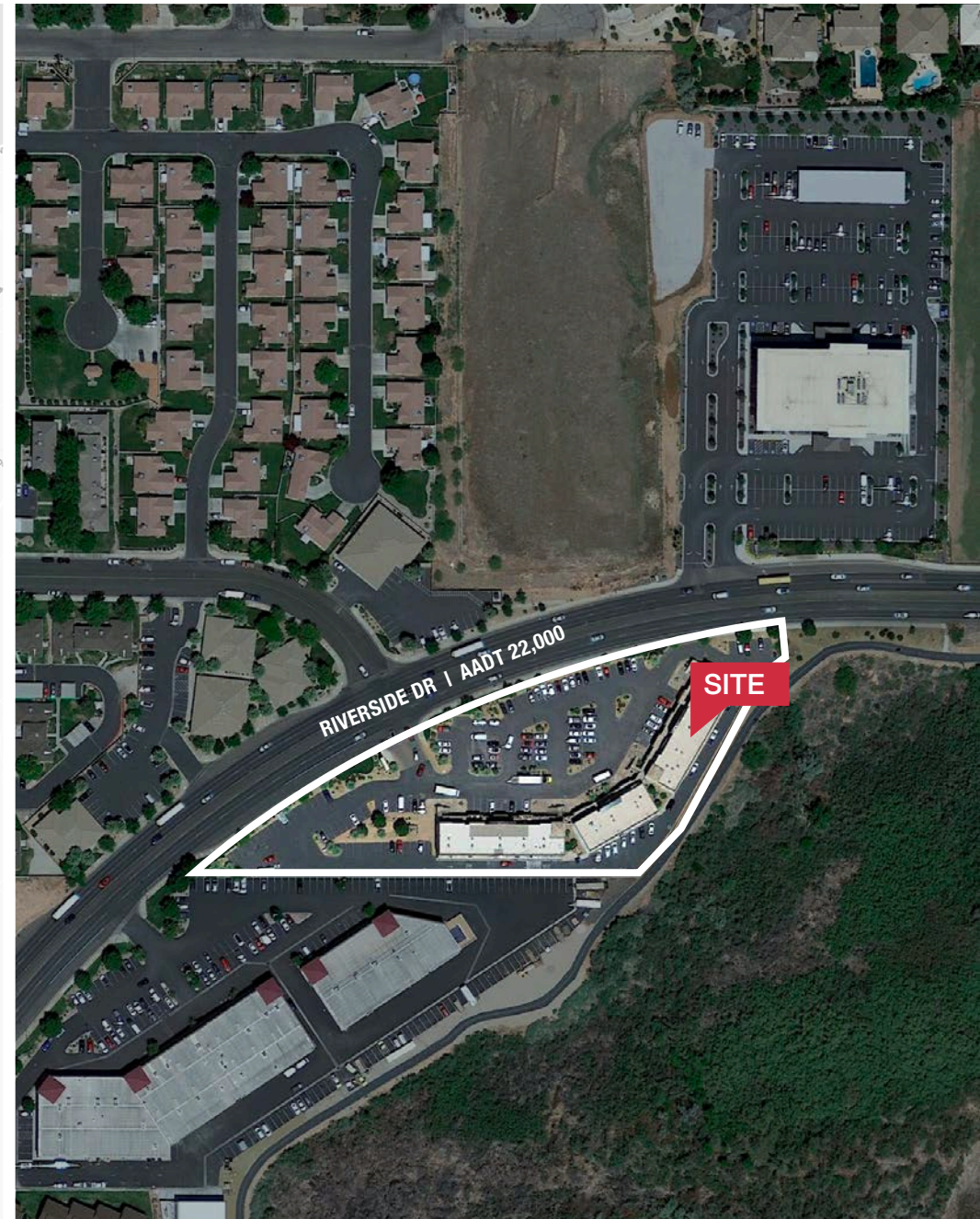
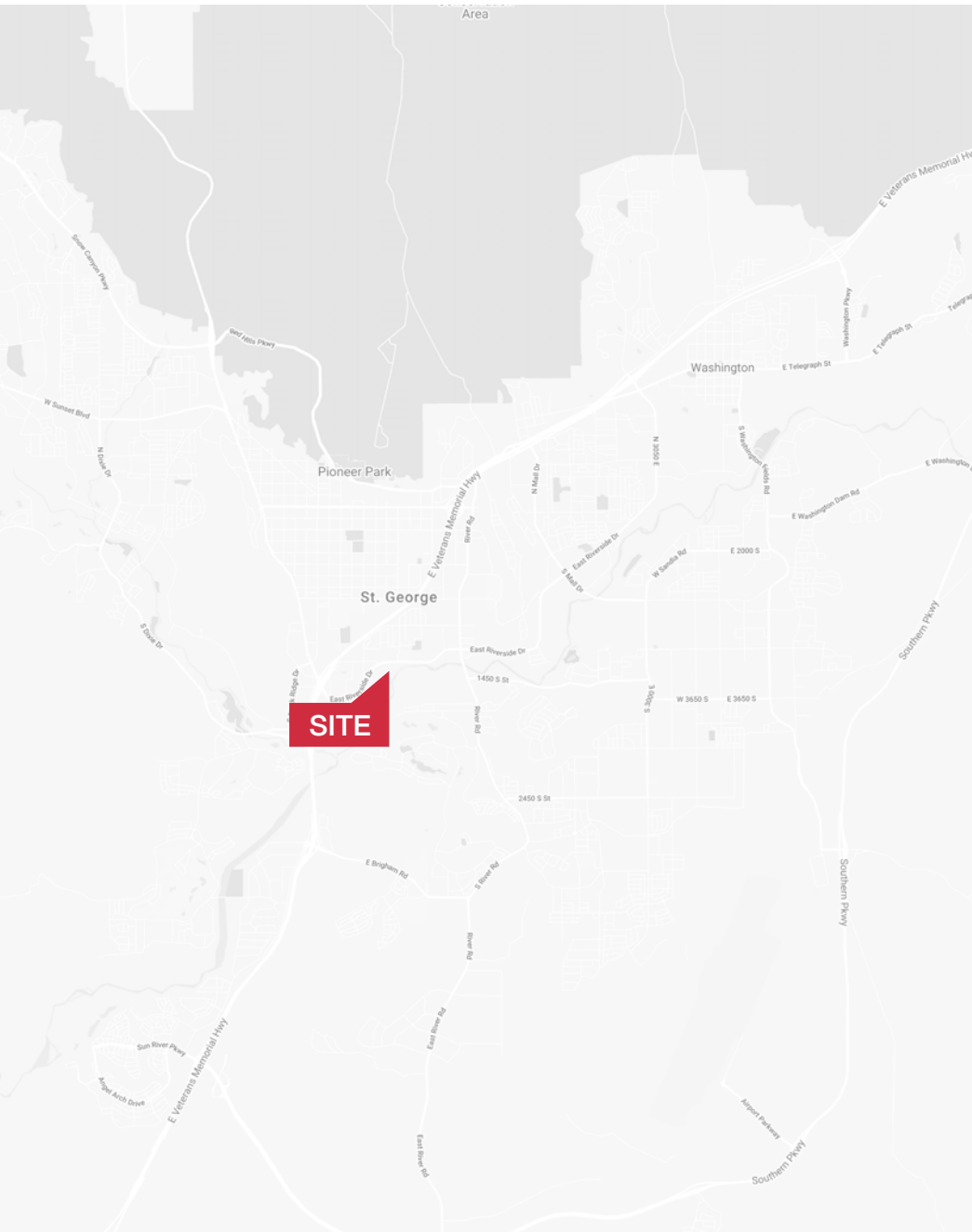


Area Map

- Shops/Tenants
- Schools
- Public Parks
- Govt. Buildings
- Airport



Site Map

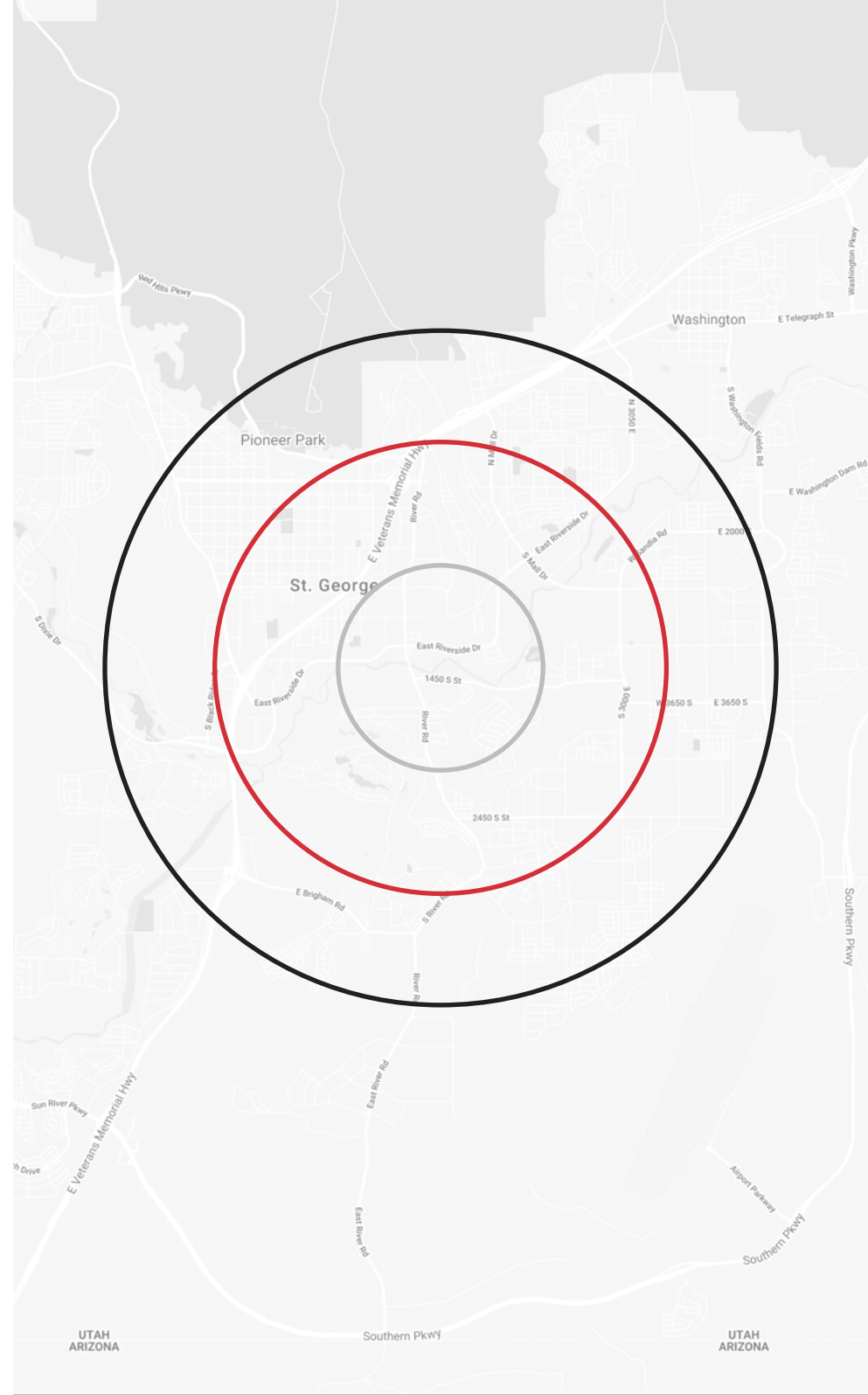


Demographics

POPULATION	1-mile	3-mile	5-mile
2024 Population	8,341	58,498	120,218
HOUSEHOLDS	1-mile	3-mile	5-mile
2024 Households	3,122	20,672	41,562
INCOME	1-mile	3-mile	5-mile
2024 Average HH Income	\$95,481	\$108,808	\$113,959

Traffic Counts

STREET	AADT
Riverside Dr	26,000





Distance to Major Cities

Salt Lake City, Utah	301 miles
Las Vegas, Nevada	120 miles
Los Angeles, California	387 miles
San Diego, California	449 miles
Denver, Colorado	629 miles
Phoenix, Arizona	421 miles

Market Research

Our offices publish commercial and residential market research across Utah, Nevada, and Texas. NAI Excel is known for their deep and rich data. Lending institutions, appraisers, and business consultants look to our market reports as the authority on commercial real estate market trends. We have built and maintained a comprehensive database comprised of data collected from some of the largest appraisal firms in the region, NAI transaction, and other data. NAI publishes statistics for the office, retail, industrial, and multifamily markets. Additionally, single family housing reports are published for major market in Utah, Southern Nevada, Southern California and Central Texas, through our affiliate.

CLICK HERE



**VIEW MARKET STATISTICS
FOR OFFICE, RETAIL,
INDUSTRIAL & MULTIFAMILY**

<https://excelcres.com/market-research>

NAI Excel

COMMERCIAL REAL ESTATE SERVICES, WORLDWIDE

243 E. St. George Blvd. Suite 200
St George, Utah 84770
435.628.1609 | naixel.com

Jason Griffith, CCIM
435.627.5709
jasong@naixel.com