



FLEX SPACE AVAILABLE FOR LEASE

94,660 SF on 11.37 Acres

2000 Cornwall Road

South Brunswick, NJ 08852



PROPERTY DETAILS

BUILDING SIZE

- Approximately 94,600 SF (divisible to 5,000 SF)

GROUNDS

- Approximately 11.37 Acres

CONSTRUCTION DATE

- 1987

RENOVATION DATE

- 2026

CEILING HEIGHT

- Production/Primary Area - 14' clear

TRUCK LOADING

- Three (3) loading docks
- Seven (7) drive-in doors

LIGHTING

- LED

POWER

- 2,600Amps / 3-Phase, Supplied by PSE&G

WATER

- City Water

SEWER

- City Sewer

NATURAL GAS

- Supplied by PSE&G

FIRE PROTECTION

- Fully sprinklered, wet system

HEAT

- HVAC in warehouse, temperature-controlled warehouse

AIR CONDITIONING

- HVAC in office

LAVATORIES

- Men (1)
- Women (1)

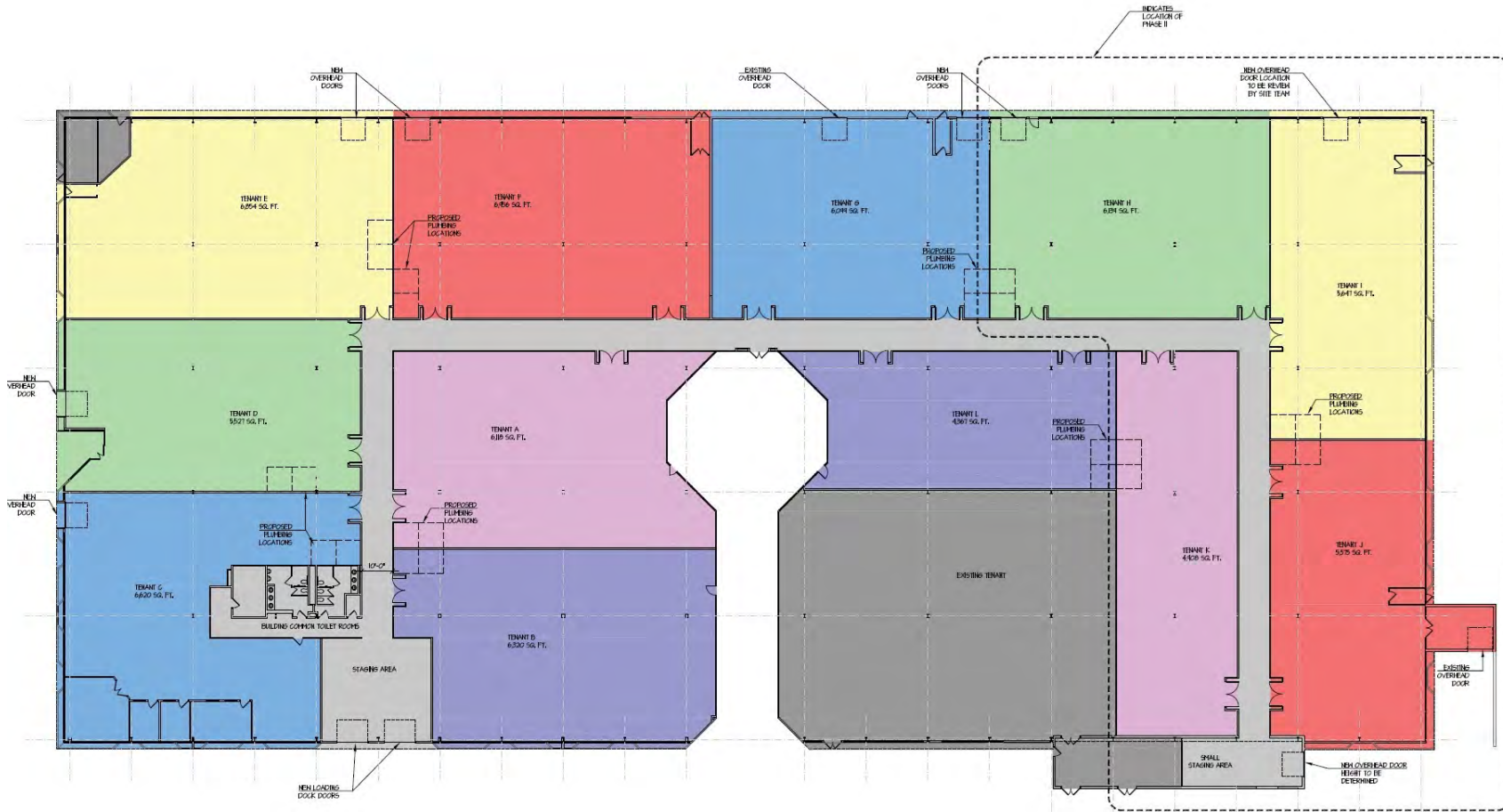
PARKING

- 360 marked surface spaces

OPERATING EXPENSES

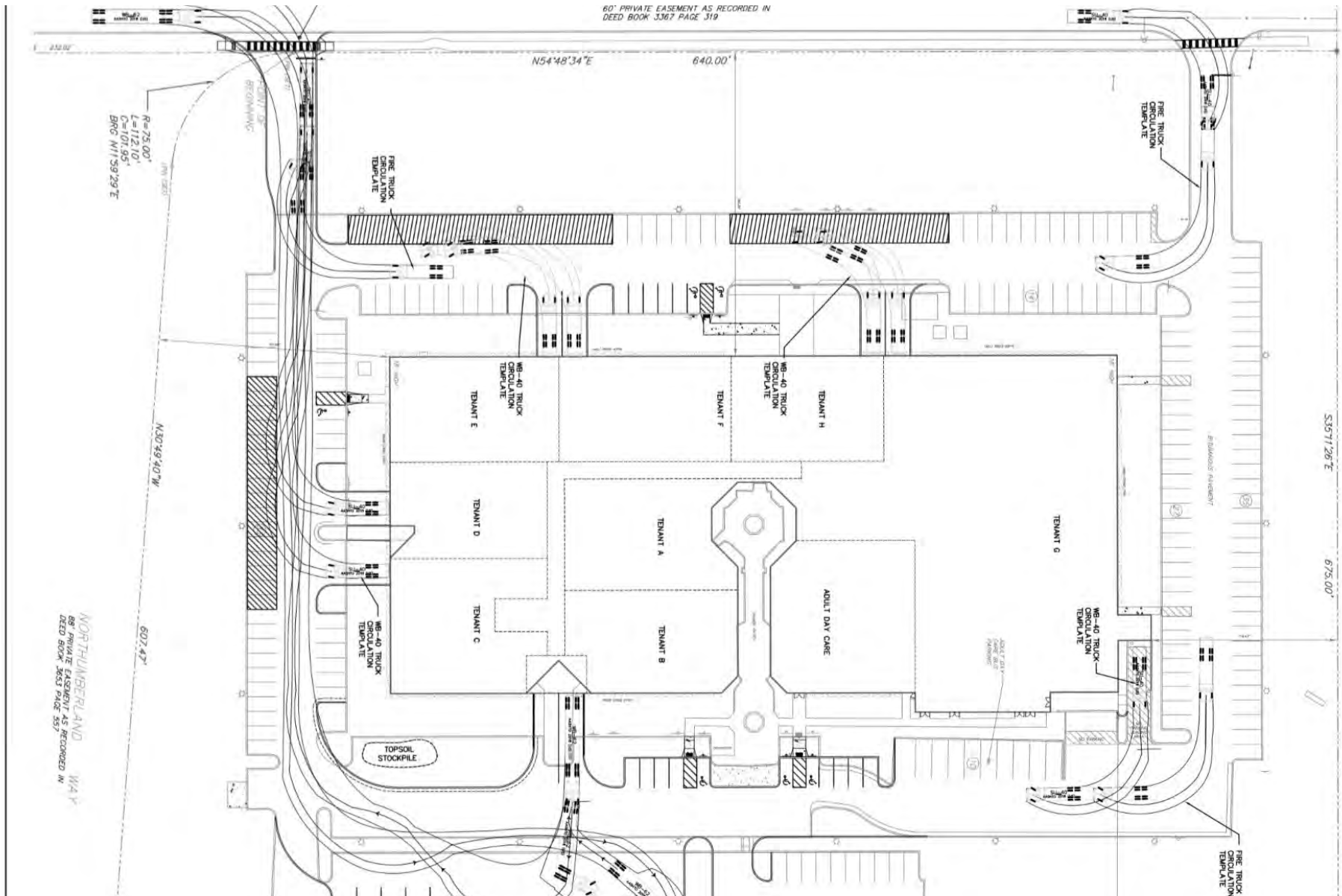
- \$4.00/SF (2026 estimated)

FLOOR PLANS



1 PROPOSED FLOOR PLAN 1/8" = 1'-0"

SITE PLAN



ADDITIONAL PHOTOS



LOCAL MAP



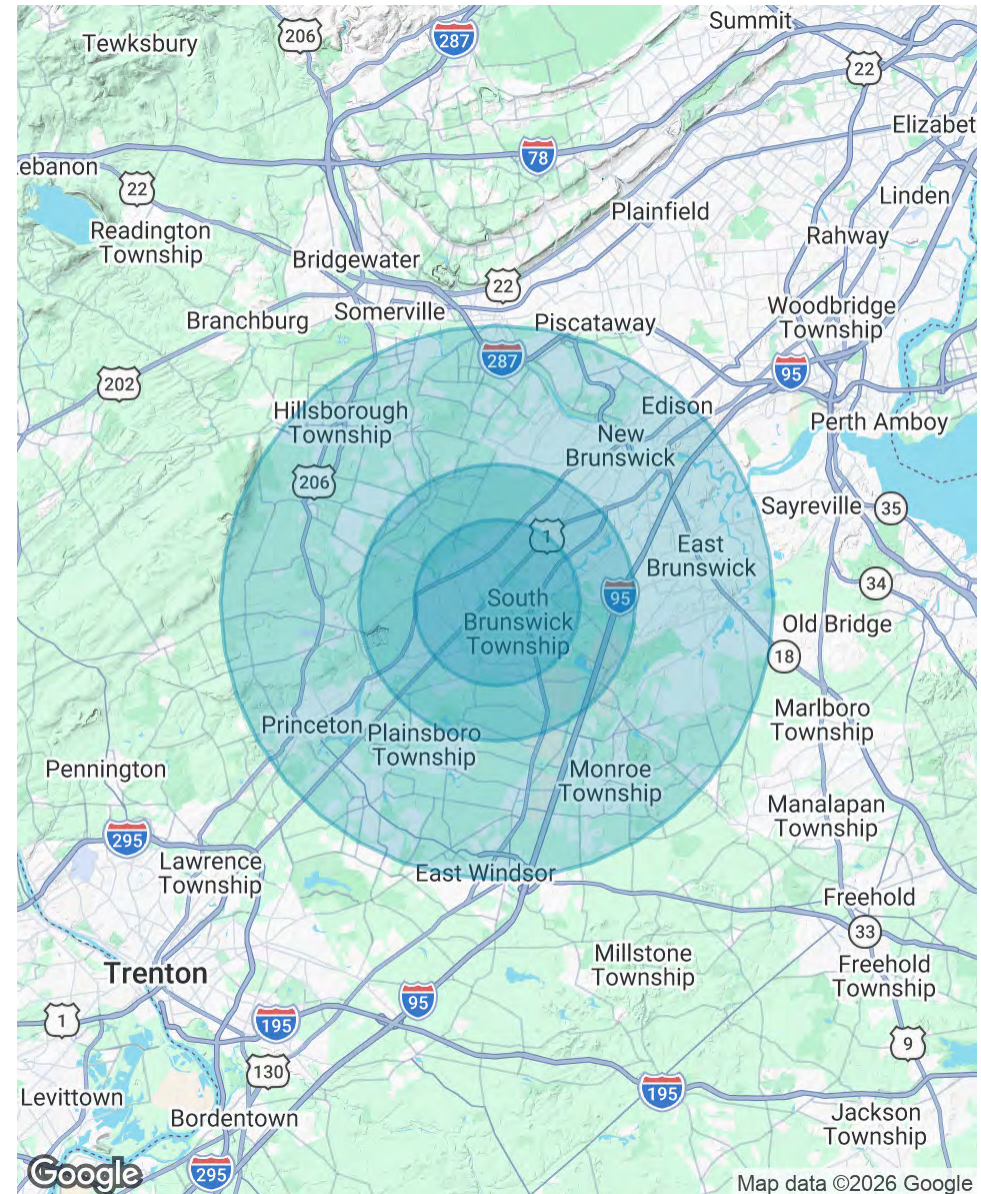
The property is ideally located in South Brunswick with immediate access to major regional corridors, right off of US Route 1 and short distance to Route 130. Its strategic position provides convenient connectivity to the New Jersey Turnpike (Exit 8A), Interstate 95, and key logistics routes throughout Central New Jersey, as well as efficient access to the Ports of New York and New Jersey and Newark Liberty International Airport.

DEMOGRAPHICS MAP & REPORT

POPULATION	3 MILES	5 MILES	10 MILES
Total Population	61,831	108,772	588,956
Average Age	40.8	41.6	40.6
Average Age (Male)	41.2	41.7	39.6
Average Age (Female)	40.8	41.5	41.2

HOUSEHOLDS & INCOME	3 MILES	5 MILES	10 MILES
Total Households	23,065	39,404	211,879
# of Persons per HH	2.7	2.8	2.8
Average HH Income	\$157,949	\$167,596	\$158,515
Average House Value	\$449,072	\$497,937	\$514,906

2023 American Community Survey (ACS)



PRIMARY CONTACTS



Matthew Fennelly
Vice President
215.448.6236
mfennelly@binswanger.com



Michael Torsiello, SIOR
Senior Vice President
215.448.6210
mtorsiello@binswanger.com



Three Logan Square
1717 Arch Street, Suite 5100
Philadelphia, PA 19103
<https://www.binswanger.com>