



For Lease



Sam Svendahl
Senior Associate
+1 952 220 2837
sam.svendahl@colliers.com



Brian Doyle
Vice President
+1 612 865 4907
brian.doyle@colliers.com

1600 Utica Ave S, Suite 300
Minneapolis, MN 55416
P: +1 952 897 7700
colliers.com

Bolger Building I

1050 33rd Avenue SE, Minneapolis, Minnesota 55414

32,212 total square foot multi-tenant office/warehouse/production building located off Highway 280 and Como Avenue in Minneapolis.

Current Availability

- Up to 3,594 rentable square feet (RSF)

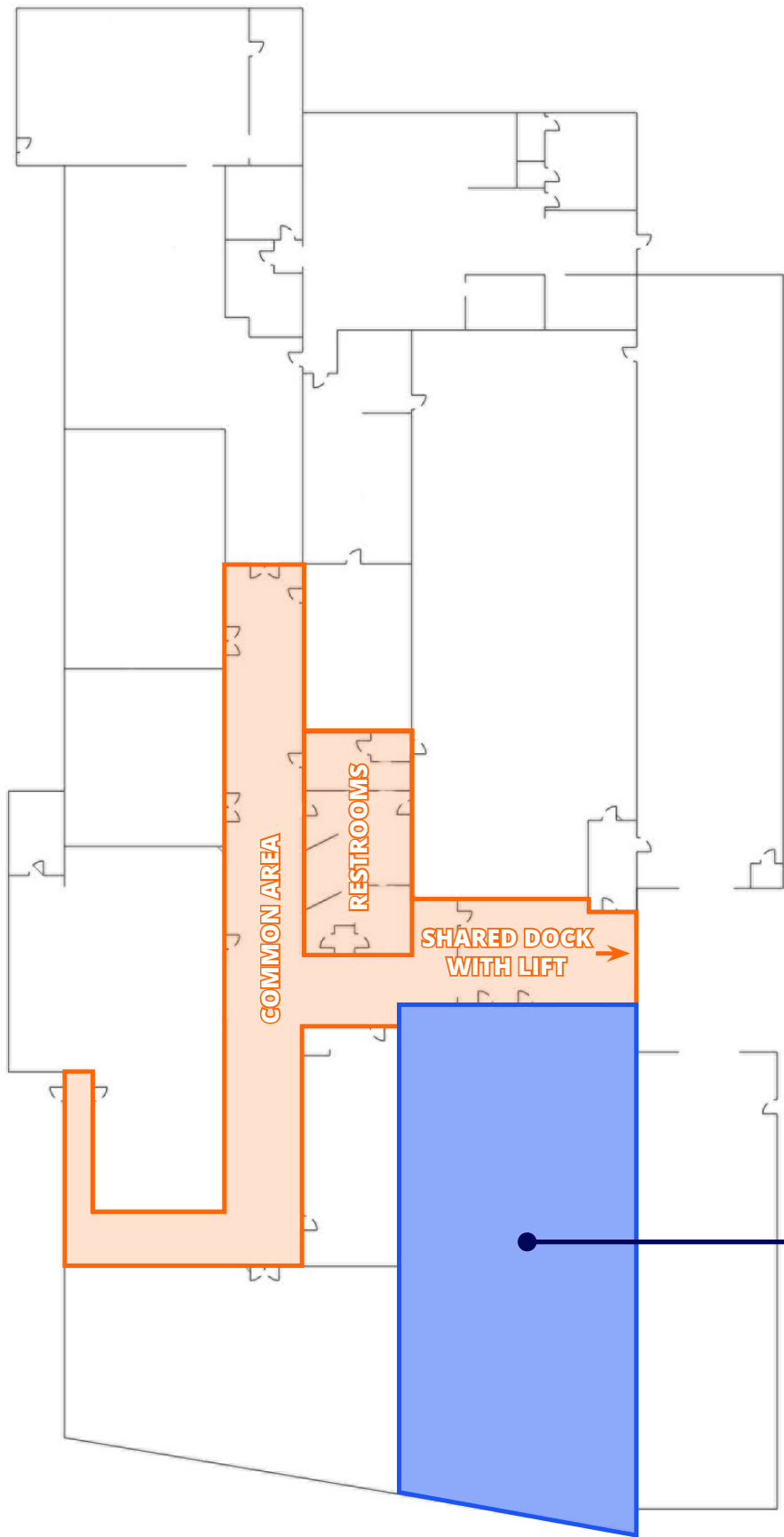
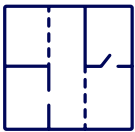
Building Amenities

- Easy access to I-94, Highway 280 and I-35W
- 100% air-conditioned
- Heavy power, bus duct
- Epoxy floors, nicely finished spaces
- Building signage available
- Bus access via Como Avenue
- Locally owned and building management on site

Copyright © 2025 Colliers International.

Information herein has been obtained from sources deemed reliable, however its accuracy cannot be guaranteed. The user is required to conduct their own due diligence and verification.

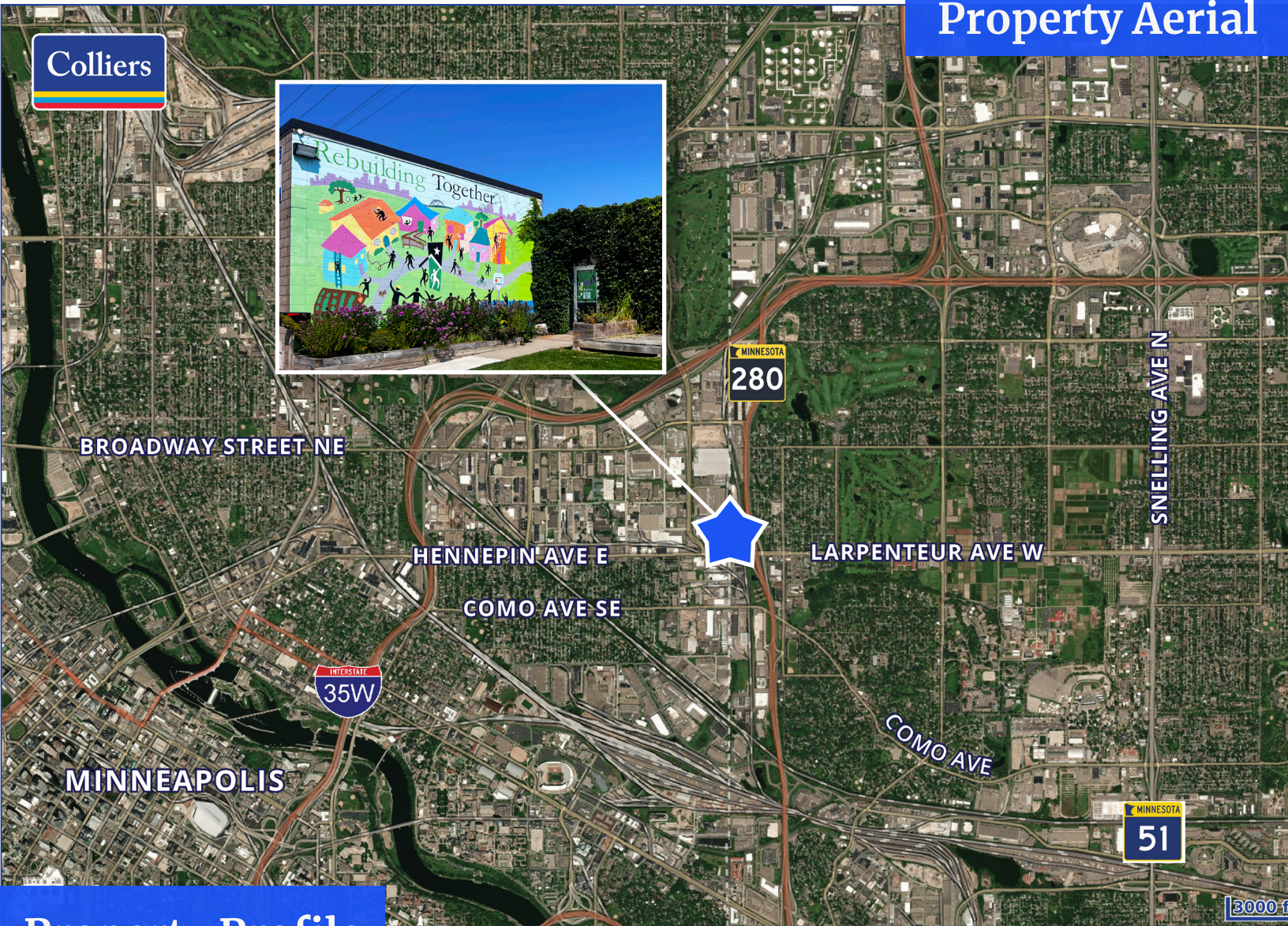
Floor Plan



AVAILABLE
3,594 RSF

Colliers

Property Aerial



Property Profile

Address: Bolger Building I
1050 33rd Ave SE, Minneapolis, MN 55108

Year Built: 1926 (newly updated)

Loading: Access to shared dock high & grade level loading

Zoning: I-1 Industrial

Gross Rates: \$14.00 PSF (includes normal utilities)

Clear Height: 11' - 12'

Bolger Building I



Sam Svendahl

Senior Associate
+1 952 220 2837
sam.svendahl@colliers.com



Brian Doyle

Vice President
+1 612 865 4907
brian.doyle@colliers.com



1600 Utica Ave S, Suite 300
Minneapolis, MN 55416
P: +1 952 897 7700
colliers.com

