

**1,907 SF INDUSTRIAL BAY &
OFFICE SPACE**



**105 BOW MEADOWS CRESCENT # 152
CANMORE, AB**

Alex Bauer, Associate
403-688-1407 | alex@alexsellscanmore.ca

Royal LePage Solutions, Brokerage
205, 264 Midpark Way SE, Calgary, AB
Independently Owned & Operated

FOR SALE

PROPERTY OVERVIEW

\$1,265,000.00

Property Features

- Prime industrial condominium unit located in Canmore
- 1,907 SF flexible industrial / office space
- Functional warehouse area with overhead door access
- Second-floor office space for administration or workspace
- Excellent access for deliveries, equipment, and service vehicles
- Located in the established Elk Run Industrial Park
- Ideal for trades, contractors, storage, or service businesses

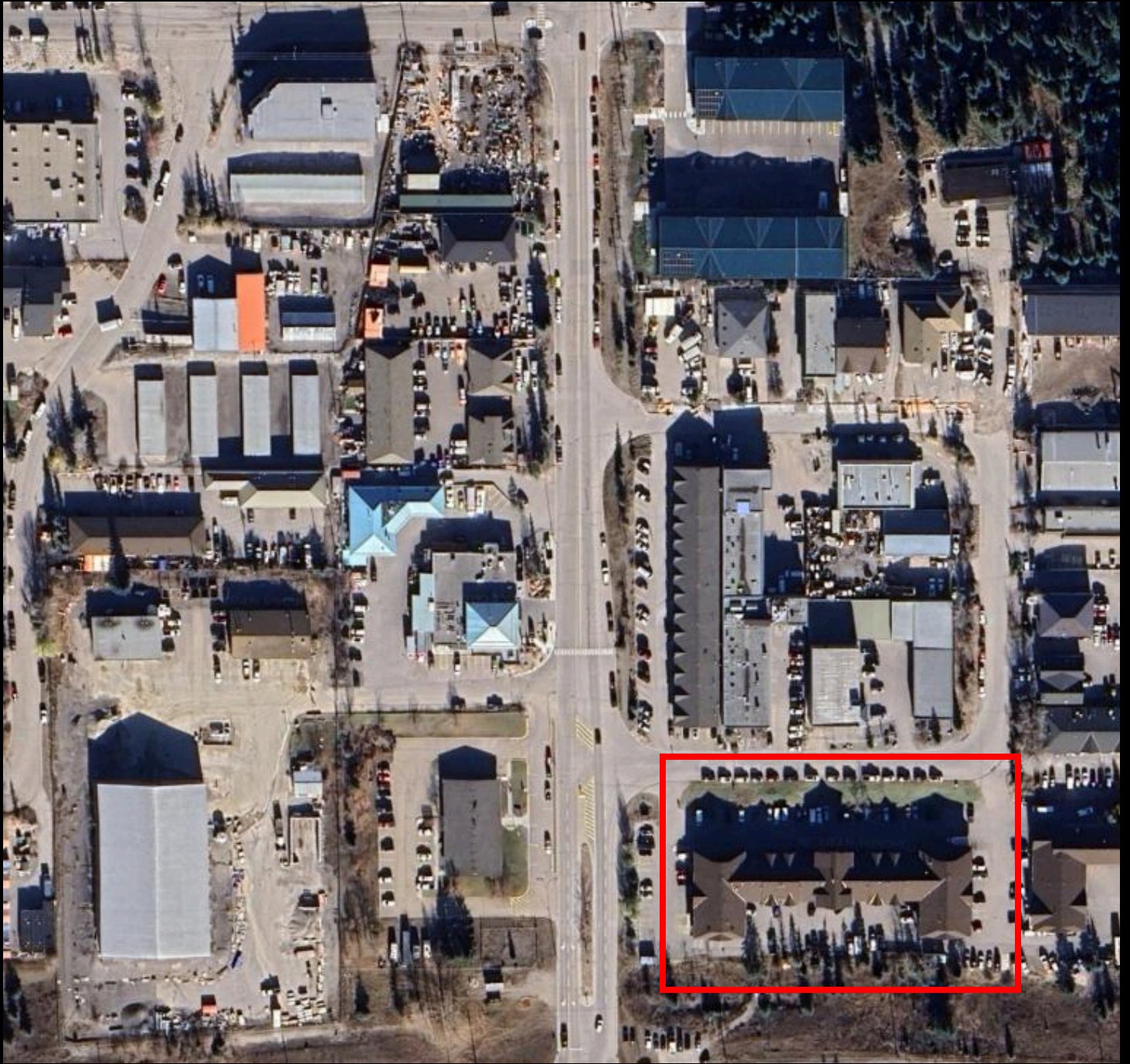
Property Overview

- Property Type: Industrial Condo
- Total Area: 1,907 SF
- Year Built: 2001
- Sale Price: \$1,265,000.00
- Condo Fee: \$437.78 / month
- Zoning: IND2
- Parking: 5 stalls

PROPERTY PHOTOS



LOCATION MAP



All offices are independently owned and operated, except those marked as indicated at rlp.ca/disclaimer. Not intended to solicit currently listed properties or buyers under contract. The above information is from sources believed reliable, however, no responsibility is assumed for the accuracy of this information. ©2022 Bridgemarq Real Estate Services Manager Limited. All rights reserved.