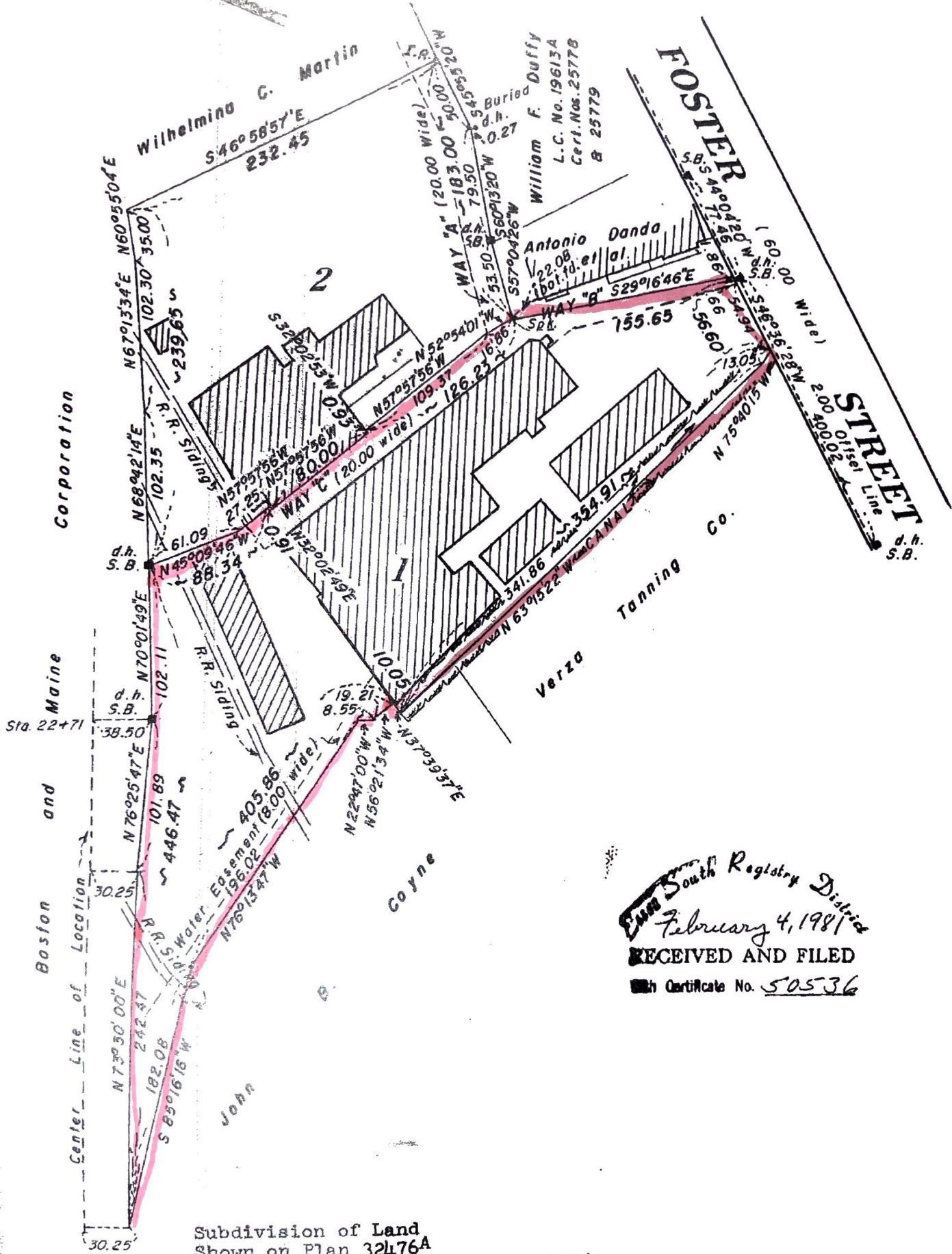
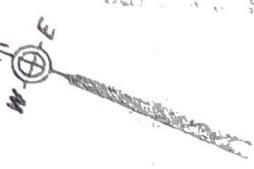


November 12, 1981



Subdivision of Land  
 Shown on Plan 32476A  
 Filed with Cert. of Title No. 40162  
 South Registry District of Essex County

Separate certificates of title may be issued for land shown hereon as Lots 1 and 2  
 By the Court.

*Margaret M. Daly*  
 Recorder.

DEC. 11, 1980  
 F.T.F.

Essex South Registry District  
 February 4, 1981  
 RECEIVED AND FILED  
 Certificate No. 50536

Abutters are shown as on original decree plan

Copy of part of plan filed in  
**LAND REGISTRATION OFFICE**  
 DEC. 11, 1980  
 Scale of this plan 80 feet to an inch  
 R.L. Woodbury, Engineer for Court