

University Center - Food Hall: Main Bar Equipment Schedule				Date:	5/31/2023
---	--	--	--	--------------	------------------

Code	Qty	Equipment Type	Dimensions (in)			Manufacturer	Model
			Lenth	Depth	Height		
B1	2	Under Bar Rfrg - Glass Doors	72.75	24.50	35.75	Avantco	UBB-72G-HC
B2	1	Under Bar Rfrg - Solid Doors	72.75	24.50	35.75	Avantco	UBB-72-HC
B3	2	Beer Tap Drip Tray w/ Glass Rinser (Surface Mount)	30.00	5.00	0.75	Micro Matic	DP-120D-30GR
B4	2	Hand Sink w/ Faucet	14.00	21.00	33.00	Regency	600B12114
B5	2	Dump Sink / Blender Station	12.00	26.00	33.00	Regency	600BSDS2612
B5.1	2	Dump Sink Gooseneck Faucet	-	-	-	Regency	600FW44GLL
B6.1	2	Ice Bin w/ 10-Circuit Cold Plate	30.00	21.00	33.00	Regency	600IB2130C0
B6.2	2	Ice Bin Lids	30.00	21.00		Regency	600IB2130LID
B6.3	2	Ice Bin for Mixer Bottles	12.00	21.00	33.00	Regency	600IB2112
B6.4	2	Ice Bin Speed Rail - Single Height	42.00	4.13	6.50	Regency	712B5542
B7.1	1	3-Compartment Sink w/ Faucet	60.00	18.75	33.00	Regency	600B31014213
B7.2	2	3-Compartment Sink Speed Rail	30.00	4.13	6.50	Regency	712B5530
B8	2	Glass Rack w/ Drain Board	24.00	23.00	33.00	Regency	600GRSU2324C
B9	1	Dishwasher w/ 6" Stand (Height is w/ Stand)	24.25	24.00	39.38	Noble	495UL30KIT6
B10	1	Ice Maker - Medium Cube Size	30.00	30.00	33.00	Scotsman	CU3030MA-1
B11	3	Wire Shelving Unit	48.00	18.00	34.00	Regency	460EB1848K33
B12	1	Glass Froster	26.00	28.00	34.00	Avantco	GF25-HC

<u>Miscellaneous Other:</u>
Soda Guns
Glass Racks
Glasses
Trash Cans
Rubber Bar Mats
Floor Mats
Cleaning + Sanitation Supplies
Consumables
Bartending Equipment

Avantco UBB-72G-HC 73" Black Counter Height Narrow Glass Door Back Bar Refrigerator with LED Lighting

Item #178UBB72GHC



Features

- 1 1/2" thick stainless steel countertop with stainless steel interior and black coated steel exterior
- LED interior lighting
- Six adjustable epoxy-coated steel shelves can be removed to fit three 1/2 kegs
- Preprogrammed digital temperature controls featuring auto-defrost function for easy setup and maintenance
- 115V; 3/7 hp; 2 Amps; R290 refrigerant

Certifications



ETL US



5-15P



ETL Sanitation

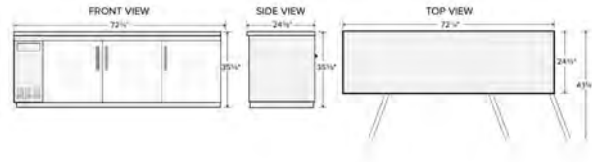


Technical Data

Width	72 3/4 Inches
Depth	24 7/16 Inches
Height	35 5/8 Inches
Power Cord Length	102 Inches
Interior Width	60 1/8 Inches
Packaging Width	75.25
Shelf Width	19 - 20 1/2 Inches
Interior Depth	18 1/2 Inches
Nominal Depth	Narrow
Packaging Depth	27.5
Shelf Depth	19 - 20 1/2 Inches
Interior Height	30 1/2 Inches
Packaging Height	41.75
Amps	2 Amps
Hertz	60 Hertz
Phase	1 Phase
Voltage	115 Volts
Access Type	Doors
BTU (LBP)	974
Capacity	(3) 1/2 Kegs 21.6 cu. ft.
Casters	Without Casters
Compressor Location	Side Mounted
Countertop Type	Stainless Steel
Door Style	Swing
Door Type	Glass
Exterior Finish	Black
Features	Automatic Electric Defrost Digital Temperature Controller Food Rated LED Lighting
Horsepower	3/7 HP
Individual Shelf Capacity	90 lb.
Insulation Material	Polyurethane Foam
Material	Black Coated Steel/Stainless Steel
Maximum Ambient Temperature	90 Degrees F
Net Weight	331 lb.
Number of Doors	3 Doors
Number of Kegs	3 Kegs
Number of Shelves	6 Shelves
Plug Type	NEMA 5-15P
Refrigerant Type	R-290
Shelf Material	Epoxy-Coated Steel
Temperature Range	33 - 40 Degrees F
Top Type	Counter Height

Plan View

B1



Notes & Details

Optimize the space behind your bar by adding refrigerated storage with this Avantco UBB-72G-HC 73" counter height narrow back bar refrigerator! Providing 21.6 cu. ft. of interior storage space, the unit fits up to (3) 1/2 kegs while housing six shelves that each accommodate up to 90 lb. They're even illuminated by bright LED lighting for optimal product visibility. The epoxy-coated steel shelves are perfect for storing and organizing heavy bulk ingredients for your bar service, from bottles of ale to bottles of cider. Plus, with a narrow depth design, the unit fits in spaces other units can't, helping you to maximize the space you have available.

The interior, made of strong 304 type stainless steel, is accessible through three glass doors. Because they're made of glass, the doors provide excellent product visibility, enabling you to easily view your current drink or ingredient selection for efficient drink preparation. For overall durability, the unit's exterior is made with black coated steel and is topped with a type 304 stainless steel surface.

This back bar refrigerator ensures optimal performance by operating with a 3/7 hp refrigeration system that circulates R290 hydrocarbon refrigerant to maintain temperatures from 33 to 40 degrees Fahrenheit. R290 refrigerant has an ozone depletion potential (ODP) of 0 and a global warming potential (GWP) of 3, making it an energy-efficient choice for your business. The foamed-in-place polyurethane insulation provides the refrigerator with additional structural integrity and ensures that all beverages held in the unit remain at cool temperatures and are ready for immediate service to customers! The unit requires a 115V electrical connection for operation.

⚠ WARNING: This product can expose you to chemicals including lead, which are known to the State of California to cause cancer, birth defects, or other reproductive harm. For more information, go to www.p65warnings.ca.gov.

Item #: 178UBB72HC Project: _____

Qty: **1** Date: _____ Approval: _____

B2

Avantco UBB-72-HC 73" Black Counter Height Narrow Solid Door Back Bar Refrigerator with LED Lighting

Item #178UBB72HC



Features

- 1 1/2" thick stainless steel countertop with stainless steel interior and black coated steel exterior
- LED interior lighting
- Six adjustable epoxy-coated steel shelves can be removed to fit three 1/2 kegs
- Preprogrammed digital temperature controls featuring auto-defrost function for easy setup and maintenance
- 115V; 3/7 hp; 2 Amps; R290 refrigerant

Certifications



ETL US



5-15P



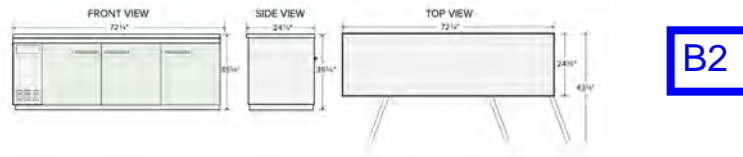
ETL Sanitation



Technical Data

Width	72 3/4 Inches
Depth	24 7/16 Inches
Height	35 5/8 Inches
Power Cord Length	102 Inches
Interior Width	60 1/8 Inches
Packaging Width	75.25
Shelf Width	19 - 20 1/2 Inches
Interior Depth	18 1/2 Inches
Nominal Depth	Narrow
Packaging Depth	27.5
Shelf Depth	19 - 20 1/2 Inches
Interior Height	30 1/2 Inches
Packaging Height	41.75
Amps	2 Amps
Hertz	60 Hertz
Phase	1 Phase
Voltage	115 Volts
Access Type	Doors
BTU (LBP)	974
Capacity	(3) 1/2 Kegs 21.6 cu. ft.
Casters	Without Casters
Compressor Location	Side Mounted
Countertop Type	Stainless Steel
Door Style	Swing
Door Type	Solid
Exterior Finish	Black
Features	Automatic Electric Defrost Digital Temperature Controller Food Rated LED Lighting
Horsepower	3/7 HP
Individual Shelf Capacity	90 lb.
Insulation Material	Polyurethane Foam
Material	Black Coated Steel/Stainless Steel
Maximum Ambient Temperature	90 Degrees F
Net Weight	331 lb.
Number of Doors	3 Doors
Number of Kegs	3 Kegs
Number of Shelves	6 Shelves
Plug Type	NEMA 5-15P
Refrigerant Type	R-290
Shelf Material	Epoxy-Coated Steel
Temperature Range	33 - 40 Degrees F
Top Type	Counter Height

Plan View



Notes & Details

Optimize the space behind your bar by adding refrigerated storage with this Avantco UBB-72-HC 73" counter height narrow back bar refrigerator! Providing 21.6 cu. ft. of interior storage space, the unit fits up to (3) 1/2 kegs and houses 6 shelves that each accommodate up to 90 lb. The epoxy-coated steel shelves are perfect for storing and organizing beverages for your bar service, from bottles of ale and beer to cans of crisp ciders. Plus, with a narrow design, the unit fits in spaces other units can't, helping you to maximize the space you have available.

The interior, made of strong 304 type stainless steel, is accessible through three solid doors. For overall durability, the unit's exterior is made with black coated steel and is topped with a type 304 stainless steel surface.

This back bar refrigerator ensures optimal performance by operating with a 3/7 hp refrigeration system that circulates R290 hydrocarbon refrigerant to maintain temperatures from 33 to 40 degrees Fahrenheit. R290 refrigerant has an ozone depletion potential (ODP) of 0 and a global warming potential (GWP) of 3, making it an energy-efficient choice for your business. The foamed-in-place polyurethane insulation provides the refrigerator with additional structural integrity and ensures that all beverages held in the unit remain at cool temperatures and are ready for immediate service to customers! The unit requires a 115V electrical connection for operation.

⚠ WARNING: This product can expose you to chemicals including lead, which are known to the State of California to cause cancer, birth defects, or other reproductive harm. For more information, go to www.p65warnings.ca.gov.

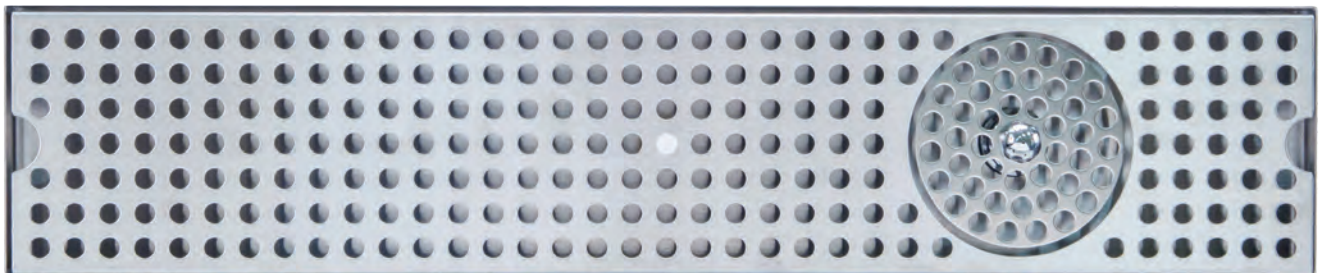


DRIP TRAY

SURFACE MOUNT SERIES 5" X 30"

- Add European style while creating dispense excitement
- Condition the glass before pouring – invert glass, push down on sprayer for cold water rinsing
- Robust 18 gauge stainless steel construction
- Welded corners, finished smooth for safety and appearance

B3
Qty: 2



DP-120D-30GR

Brushed Stainless Steel



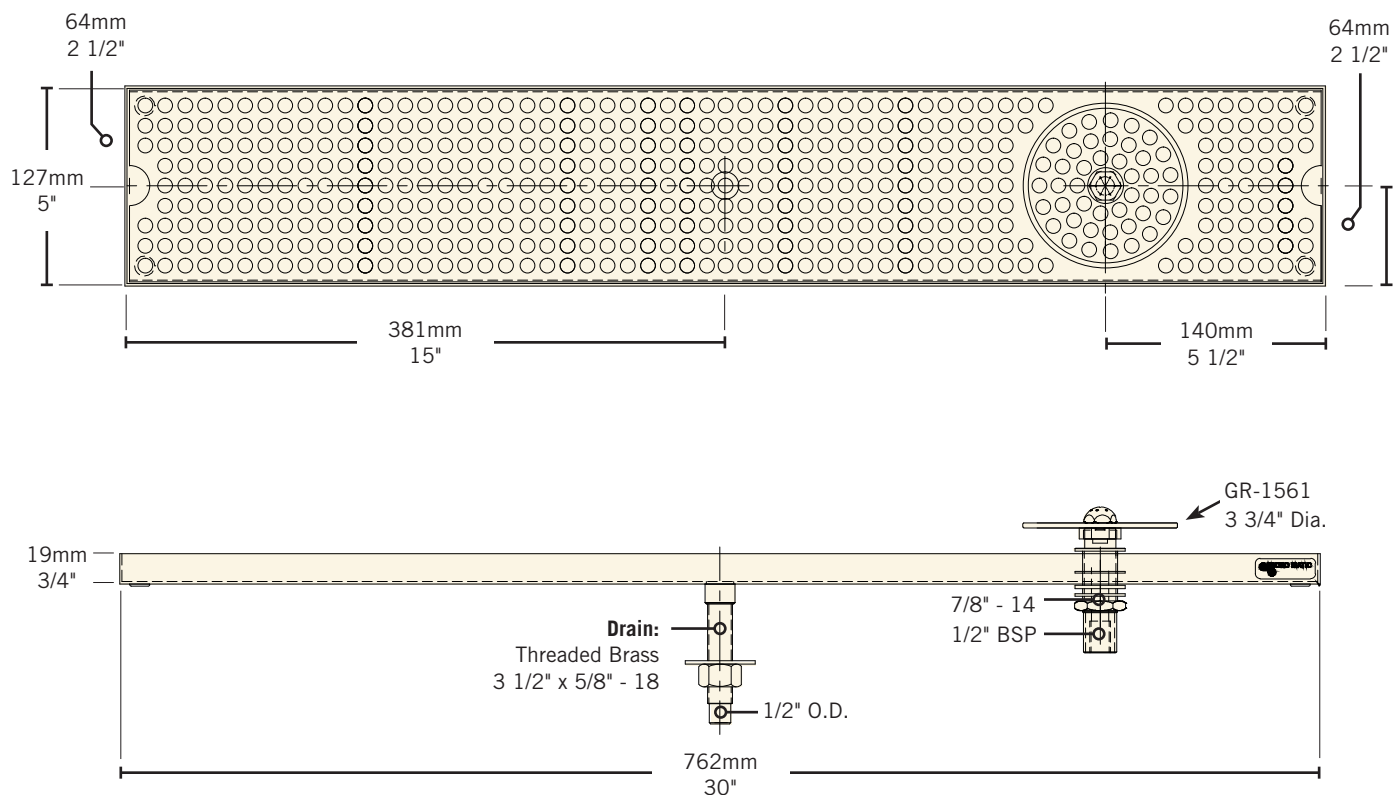
Part No.	Dimensions	Description	Shipping Weight	Box Dimensions
DP-120D-30GR	5"W x 30"L x 3/4"H	Stainless Steel	TBD	TBD

B3

Rinser Water Inlet Installation

- Always check local plumbing codes first.
- Install in-line water regulator set at 15 PSI from the street water supply (no greater, perfect operating pressure).
- Install in-line one way check valve from the street water supply (prevents pressure drop which can cause leaking).
- Install in-line shut-off for the rinser system from the street water supply (this must be turned off nightly).
- If teed into soda system make sure system can handle the increased water demand. Have plumber install a 45° 1/2" O.D. barb for the drains if line is not hard plumbed into the system.
- Install a shut-off for the rinser water supply if line is not hard plumbed into the system.

Dimensions





Item #: 600B12114 Project: _____

Qty: **2** Date: _____ Approval: _____

B4

Regency 1 Bowl Underbar Hand Sink with Faucet- 21" x 14"

Item #600B12114



Technical Data

Length	14 1/2 Inches
Width	21 Inches
Height	33 Inches
Bowl Depth	10 Inches
Backsplash Height	3 Inches
Work Surface Height	30 Inches
Backsplash	With Backsplash
Bowl Front to Back	10 Inches
Bowl Left to Right	14 Inches
Faucet Centers	4 Inches
Features	Faucet Included NSF Listed
Gauge	18 Gauge
Leg Construction	Galvanized Steel
Material	Stainless Steel
Number of Bowls	1 Bowl
Number of Compartments	1 Compartment
Stainless Steel Type	Type 304
Type	Hand Sinks

Features

- 18 gauge type 304 stainless steel construction
- Galvanized steel legs and sockets with plastic bullet feet
- 2" drain with a 1 1/2" drain basket
- Includes 6" swing spout faucet with 4" centers
- 3" high backsplash helps protect walls and contain splashes

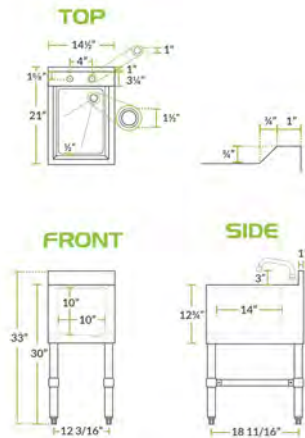
Certifications



Regency Tables & Sinks

Plan View

B4



Notes & Details

Encourage good hygiene and proper sanitation habits in your bar or restaurant with this Regency one bowl underbar hand sink! This sink features a 3" high backsplash that helps protect walls and contain splashes for a cleaner, safer work environment. Thanks to the holes punched on 4" centers, this sink can accommodate the included deck mount faucet with 6" swing spout!

This underbar sink boasts an 18 gauge type 304 stainless steel top, bowl, and backsplash that combines with a 20 gauge type 304 stainless steel apron to provide you with a durable handwashing station! It is reliably supported by four galvanized steel legs and sockets with plastic bullet feet. For added convenience, this Regency hand sink comes with a 1 1/2" drain basket that fits perfectly into the 2" drain!

⚠ WARNING: This product can expose you to chemicals including lead, which are known to the State of California to cause cancer, birth defects, or other reproductive harm. For more information, go to www.p65warnings.ca.gov.



Item #: 600BSDS2612 Project: _____

Qty: **2** Date: _____ Approval: _____

B5.1

Regency 12" x 26" Stainless Steel Blender Station with Dump Sink

Item #600BSDS2612



Technical Data

Length	12 Inches
Width	26 Inches
Height	33 Inches
Bowl Depth	4 Inches
Backsplash	With Backsplash
Bowl Front to Back	9 Inches
Bowl Left to Right	9 Inches
Features	NSF Listed
Gauge	18 Gauge
Leg Construction	Galvanized Steel
Material	Stainless Steel
Stainless Steel Type	Type 304
Type	Blender Stations Without Cold Plate

Features

- Made of 18 gauge, 304 stainless steel
- 3" backsplash with wall mount faucet holes protect the wall
- Recessed blender shelf with side splashes and a 1 1/2" grommet hole for blender power cords
- (1) 9" x 9" x 4" sink bowl with a 1" IPS drain
- Galvanized legs with stainless steel gussets and plastic bullet feet

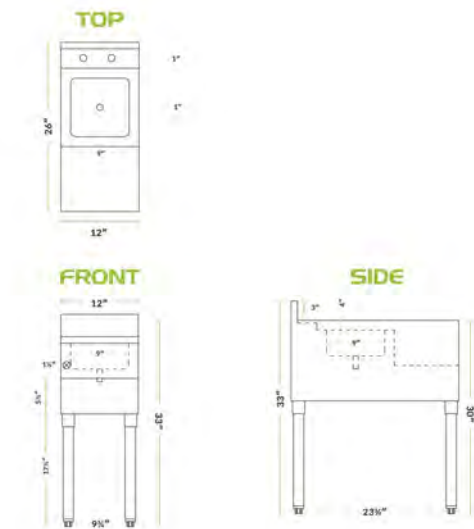
Certifications



Regency Tables & Sinks



Plan View



B5.1

Notes & Details

Enhance staff efficiency and productivity when preparing specialty drinks with the Regency 12" x 26" stainless steel blender station with dump sink. This unit combines a recessed step with a 9" x 9" x 4" dump sink for unparalleled convenience. The stainless steel step features a 1 1/2" grommet hole for blender power cords. A 3" backsplash works to protect nearby walls and floors.

This unit boasts a stainless steel blender shelf and sink with stainless steel leg gussets, galvanized steel legs, wall mount faucet holes and plastic bullet feet. It comes prepared for installation with a 1" IPS drain.

⚠ WARNING: This product can expose you to chemicals including lead, which are known to the State of California to cause cancer, birth defects, or other reproductive harm. For more information, go to www.p65warnings.ca.gov.



Item #: 600FW44GLL Project: _____

Qty: **2** Date: _____ Approval: _____

B5.2

Regency Wall Mount Handsink Faucet with 3 1/2" Swivel Gooseneck Spout and 4" Centers

Item #600FW44GLL



Technical Data

Spout Length	3 1/2 Inches
Faucet Height	8 1/2 Inches
Cartridge Type	Compression
Faucet Centers	4 Inches
Finish	Chrome
Flow Rate	2 GPM
Handle Type	Lever
Material	Brass
Maximum Water Temperature	140 Degrees F
Mounting Style	Wall Mounted
Mounting Type	Workboard
Spout Clearance	5 1/8 Inches
Spout Type	Gooseneck
Type	Faucets
Water Inlet Size	1/2 Inches

Features

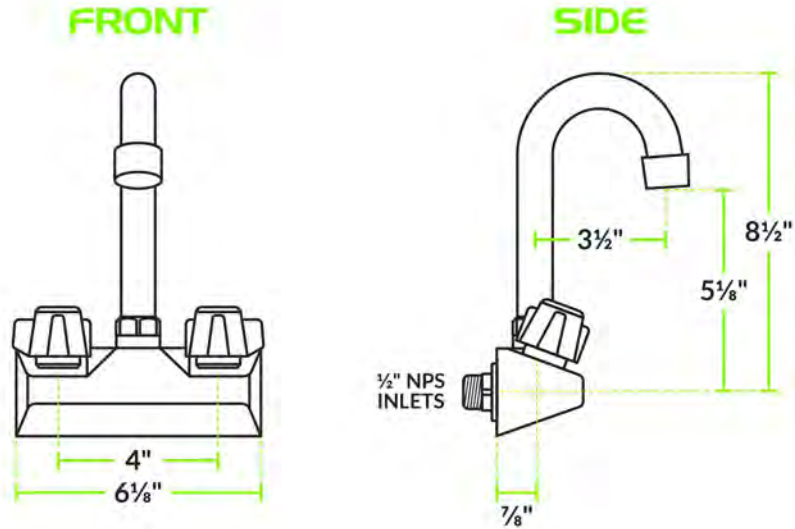
- 3 1/2" long swivel gooseneck spout, 2 GPM flow rate
- 4" centers, 1/2" NPS inlets
- Wall mounted base, attractive chrome-plated brass construction
- 140 degree maximum water temperature
- Lever handle design

Certifications



Plan View

B5.2



Notes & Details

Install a convenient and useful water fixture in your business with this Regency replacement handsink faucet! This faucet features 4" centers for fast and easy installation, and its 3 1/2" long swivel gooseneck provides excellent reach and clearance for comfortable hand washing in your kitchen, bar, classroom, or office.

For quick identification, this faucet features two easy-to-turn, labeled and color coded handles for hot and cold water. Plus, the entire unit features an attractive chrome-plated brass construction that looks great in any setting! It comes with a 2 GPM aerator outlet that provides a gentle stream perfect for most standard applications.

⚠ WARNING: This product can expose you to chemicals including lead, which are known to the State of California to cause cancer, birth defects, or other reproductive harm. For more information, go to www.p65warnings.ca.gov.



Item #: 600IB2130C0 Project: _____

Qty: **2** Date: _____ Approval: _____

B6.1

Regency 21" x 30" Underbar Ice Bin with 10 Circuit Post-Mix Cold Plate and Bottle Holders

Item #600IB2130C0



Technical Data

Length	30 Inches
Width	21 Inches
Height	33 Inches
Ice Bin Length	28 Inches
Ice Bin Width	15 3/16 Inches
Ice Bin Depth	8 Inches
Backsplash Height	3 Inches
Work Surface Height	30 Inches
Backsplash	With Backsplash
Capacity	65 lb.
Color	Silver
Features	Bottle Storage NSF Listed
Installation Type	Freestanding
Leg Construction	Galvanized Steel
Material	Stainless Steel
Number of Cold Plate Circuits	10 Circuits
Type	Ice Bins With Cold Plate

Features

- 20 gauge stainless steel bin; 65 lb. capacity
- Galvanized steel legs with adjustable plastic bullet feet
- Circuit post-mix cold plate chills up to 10 different beverage lines
- 2 plastic bottle holders and a 3" backsplash limits messes
- 5/8" I.D. drain

Certifications



Regency Tables & Sinks



Notes & Details

B6.1

Whether you're serving up a delicious cocktail or a refreshing soda, ensure you have a steady supply of cold beverages at your bar thanks to this Regency 21" x 30" underbar ice bin with 10 circuit cold plate! This convenient unit not only holds plenty of ice but also boasts a post-mix cold plate with stainless steel, beverage-grade tubing circuits that allow you to run up to 10 soda lines through the bin to chill them before serving. The 15 3/16" x 28" interior bowl holds ice, while two plastic bottle holders with removable dividers let you simultaneously chill your most popular liquors and mixers. A 1" I.D. drain pipe safely drains melted ice water from the unit so you're only left with solid pieces.

This Regency ice bin is constructed of 20 gauge, type 304 stainless steel and features poly foam insulation to help keep the bin's contents cooler longer. It stands on four galvanized legs with adjustable plastic bullet feet for stability. It also boasts a backsplash to help keep your walls and floors dry. Thanks to this unit's versatility, it's easy to store and chill everything you need to create the perfect gin and tonic, whiskey ginger, cranberry vodka, and other popular drinks at your busy bar, nightclub, or restaurant.

⚠ WARNING: This product can expose you to chemicals including lead, which are known to the State of California to cause cancer, birth defects, or other reproductive harm. For more information, go to www.p65warnings.ca.gov.



Item #: 600IB2130LID Project: _____

Qty: **2** Date: _____ Approval: _____

B6.2

Regency Stainless Steel Sliding Lid for 21" x 30" Underbar Ice Bin

Item #600IB2130LID



Technical Data

Length	19 3/8 Inches
Width	29 1/2 Inches
Features	NSF Listed
Type	Ice Bin Covers

Features

- Fits Regency 21" x 30" underbar ice bins
- 18-gauge type 304 stainless steel
- Slides front to back
- Slows the melting process with excellent cold retention
- Prevents outside objects and debris from falling into your ice

Certifications

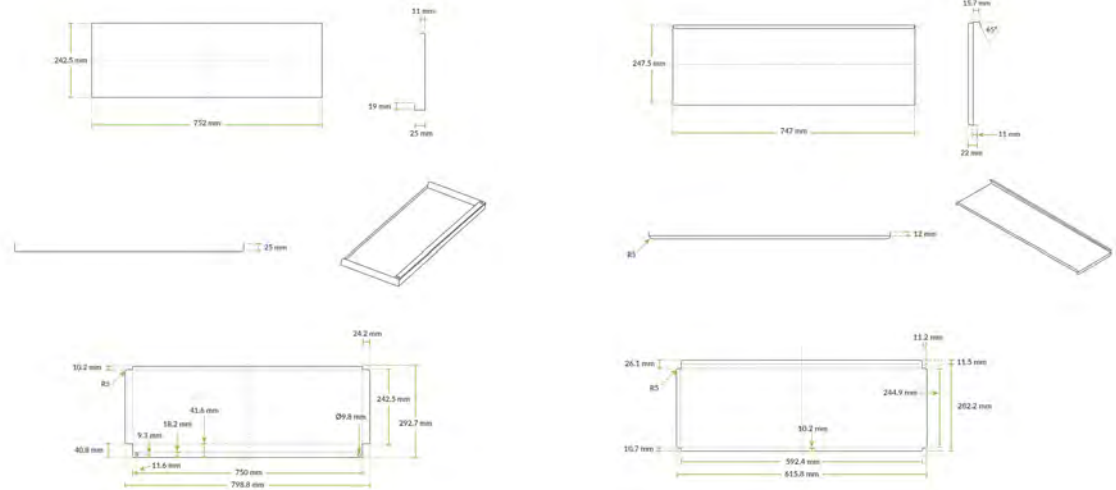


Regency Tables & Sinks



Plan View

B6.2



Notes & Details

Enhance safety and sanitation while improving the quality of your ice by adding this Regency sliding lid to your 21" x 30" underbar ice bin! Many municipalities require that underbar ice bins have a cover, and this Regency lid will help you stay in compliance. Made of 18-gauge type 304 stainless steel, this lid offers exceptional durability and corrosion-resistance as well as better cold retention. Thanks to its front to back sliding design, this lid is easy to open and close, so it won't slow you down while you're making drinks in your busy bar or restaurant.

⚠ WARNING: This product can expose you to chemicals including lead, which are known to the State of California to cause cancer, birth defects, or other reproductive harm. For more information, go to www.p65warnings.ca.gov.



Item #: 600IB2112 Project: _____

Qty: **2** Date: _____ Approval: _____

B6.3

Regency 21" x 12" Stainless Steel Underbar Ice Bin with Bottle Holders

Item #600IB2112



Technical Data

Length	12 Inches
Width	21 1/8 Inches
Height	33 Inches
Ice Bin Length	10 Inches
Ice Bin Width	15 3/16 Inches
Ice Bin Depth	12 Inches
Backsplash Height	3 Inches
Work Surface Height	30 Inches
Backsplash	With Backsplash
Capacity	35 lb.
Color	Silver
Features	Bottle Storage NSF Listed
Installation Type	Freestanding
Leg Construction	Galvanized Steel
Material	Stainless Steel
Type	Ice Bins Without Cold Plate

Features

- 20 gauge stainless steel bin; 35 lb. capacity
- Galvanized steel legs and adjustable plastic bullet feet provide stability
- Insulated with polyurethane foam
- 2 plastic bottle holders and a 3" backsplash limits messes
- 1" I.D. drain pipe with 1 1/4" connection and 3" tailpiece

Certifications



Notes & Details

Whether you're serving up a delicious cocktail or a refreshing soda, ensure you have a steady supply of cold beverages at your bar thanks to this Regency 21" x 12" underbar ice bin. The 15 3/16" x 10" interior bowl holds ice, while two plastic bottle holders with removable dividers let you simultaneously chill your most popular liquors and mixers. A 1" I.D. drain pipe safely drains melted ice water from the unit so you're only left with solid pieces.

This Regency ice bin is constructed of 20 gauge, type 304 stainless steel and features poly foam insulation to help keep the bin's contents cooler longer. It stands on four galvanized legs with adjustable plastic bullet feet for stability. It also boasts a backsplash to help keep your walls and floors dry. Thanks to this unit's versatility, it's easy to store and chill everything you need to create the perfect gin and tonic, whiskey ginger, cranberry vodka, and other popular drinks at your busy bar, nightclub, or restaurant.



Item #: 600B31014213 Project: _____

Qty: **1** Date: _____ Approval: _____

**B7.1
ALT MODEL**

Regency 3 Bowl Underbar Sink with Faucet and Two Drainboards - 60" x 18 3/4"

Item #600B31014213



Technical Data

Length	60 Inches
Width	18 3/4 Inches
Height	33 Inches
Drainboard Length	13 Inches
Bowl Depth	10 Inches
Backsplash Height	3 Inches
Backsplash	With Backsplash
Bowl Front to Back	14 Inches
Bowl Left to Right	10 Inches
Faucet Centers	4 Inches
Features	Faucet Included NSF Listed
Flow Rate	2 GPM
Gauge	18 Gauge
Leg Construction	Galvanized Steel
Material	Stainless Steel
Number of Bowls	3 Bowls
Number of Compartments	3 Compartments
Number of Drainboards	2 Drainboards
Stainless Steel Type	Type 304
Type	Bar Sinks

Features

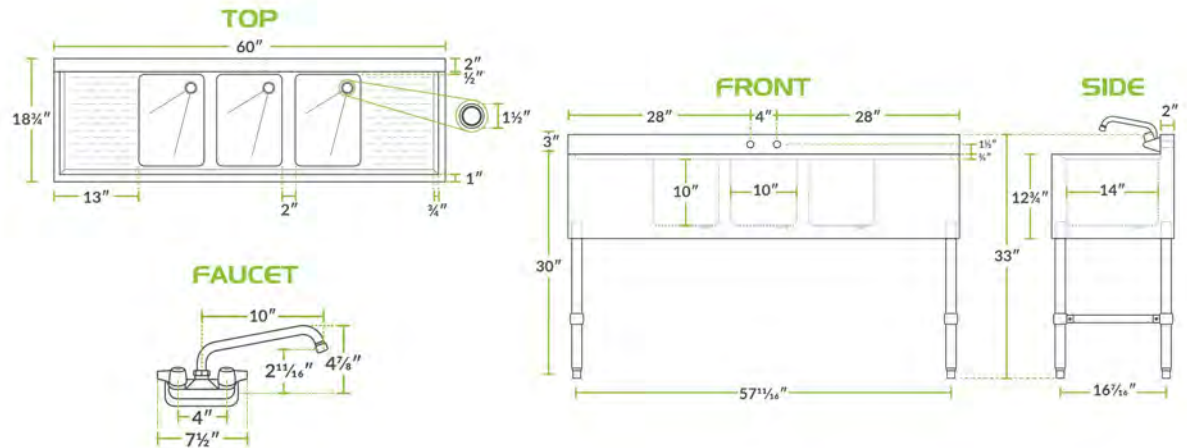
- Includes 10" swivel faucet
- Three 2" drains (1 1/2" IPS) with drain baskets included
- Durable stainless steel construction; galvanized legs with bullet feet
- Deep bowls accommodate tall glasses and pitchers
- Two drainboards aid in fast drying

Certifications



Plan View

B7.1
ALT MODEL



Notes & Details

This 3-bowl bar sink comes standard with two 13" drainboards for efficient washing and drying of your barware. The deep, 10" sink bowls accommodate all types of glasses, including pitchers! As an added convenience, it features a 3" high backsplash to keep your bar better protected from accidental spills. This 3-bowl underbar sink has two holes punched on 4" centers to accept its included 10" swivel faucet.

This sink offers a durable 18 gauge type 304 stainless steel construction along its top, bowls, and back. For maximum stability, it has 16-gauge galvanized steel legs with plastic bullet feet.

⚠ WARNING: This product can expose you to chemicals including Nickel and Lead, which are known to the State of California to cause cancer, birth defects, or other reproductive harm. For more information, go to www.p65warnings.ca.gov.

21-GAUGE STAINLESS STEEL SPEED RAILS

ITEM #: _____ QUANTITY: _____

PROJECT: _____

APPROVAL: _____

DATE: _____



REGENCY
Tables and Sinks

FEATURES

- Keeps liquor bottles organized and easily within reach
- 21 gauge Stainless Steel Construction
- Integrated Mounting Holes (hardware sold separately)
- Available in single & double tier design

SPECIFICATIONS

B7.2 / Qty: 2

ITEM	LENGTH	WIDTH	WORK HEIGHT	CAPACITY (BOTTLES)	TIER(S)	COMPONENTS
712B5515	15"	4 $\frac{1}{8}$ "	6 $\frac{1}{2}$ "	4	Single	Stainless Steel
712B5522	22"	4 $\frac{1}{8}$ "	6 $\frac{1}{16}$ "	5	Single	Stainless Steel
712B5524	24"	4 $\frac{1}{8}$ "	6 $\frac{1}{2}$ "	4-6	Single	Stainless Steel
712B5530	30"	4 $\frac{1}{8}$ "	6 $\frac{1}{2}$ "	8-9	Single	Stainless Steel
712B5532	32"	4 $\frac{1}{8}$ "	6 $\frac{1}{16}$ "	8	Single	Stainless Steel
712B5536	36"	4 $\frac{1}{8}$ "	6 $\frac{1}{2}$ "	9-10	Single	Stainless Steel
712B5542	42"	4 $\frac{1}{8}$ "	6 $\frac{1}{16}$ "	10	Single	Stainless Steel
712B5548	48"	4 $\frac{1}{8}$ "	6 $\frac{1}{2}$ "	12-13	Single	Stainless Steel
712B5515D	15"	8 $\frac{1}{8}$ "	9 $\frac{1}{2}$ "	8-10	Double	Stainless Steel
712B5522D	22"	8 $\frac{1}{8}$ "	9 $\frac{1}{2}$ "	10	Double	Stainless Steel
712B5524D	24"	8 $\frac{1}{8}$ "	9 $\frac{1}{2}$ "	10-12	Double	Stainless Steel
712B5530D	30"	8 $\frac{1}{8}$ "	9 $\frac{1}{2}$ "	16-18	Double	Stainless Steel
712B5532D	32"	8 $\frac{1}{8}$ "	9 $\frac{1}{2}$ "	16	Double	Stainless Steel
712B5536D	36"	8 $\frac{1}{8}$ "	9 $\frac{1}{2}$ "	18-20	Double	Stainless Steel
712B5542D	42"	8 $\frac{1}{8}$ "	9 $\frac{1}{2}$ "	20	Double	Stainless Steel
712B5548D	48"	8 $\frac{1}{8}$ "	9 $\frac{1}{2}$ "	24-26	Double	Stainless Steel

B6.4 / Qty: 2

7/2021

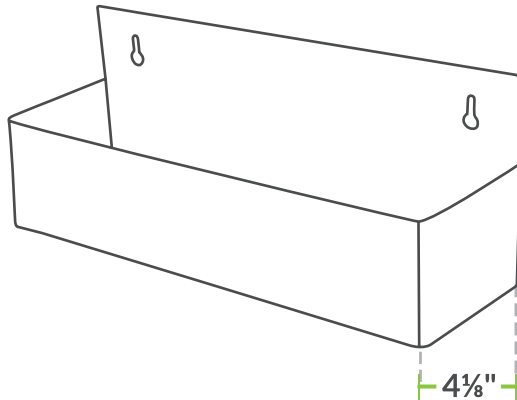
21-GAUGE STAINLESS STEEL SPEED RAILS

REGENCY
Tables and Sinks

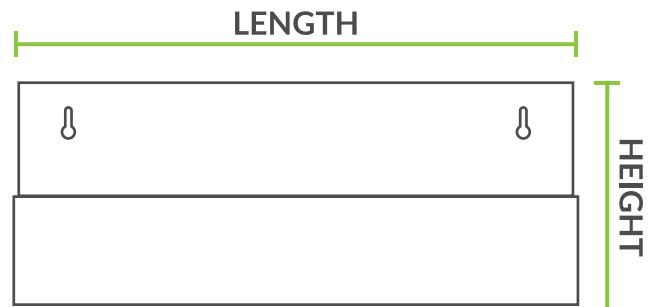
SINGLE TIER

SIDE

B6.4
B7.1

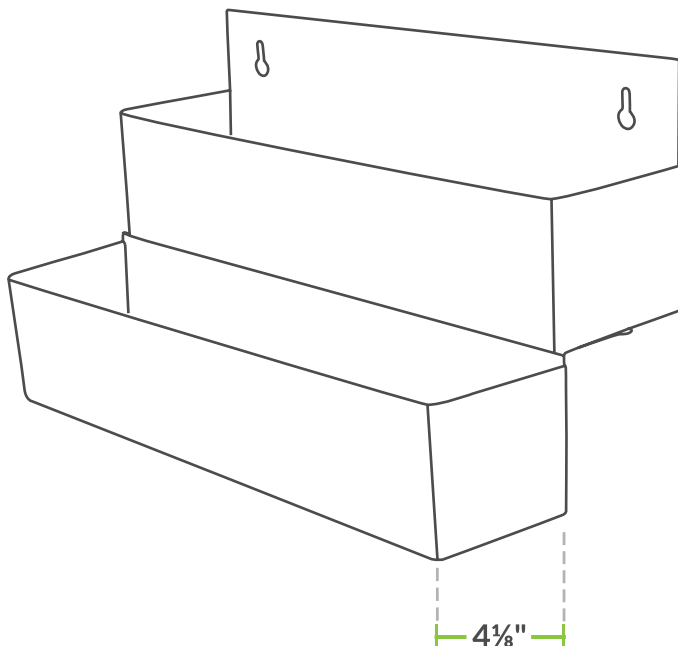


FRONT

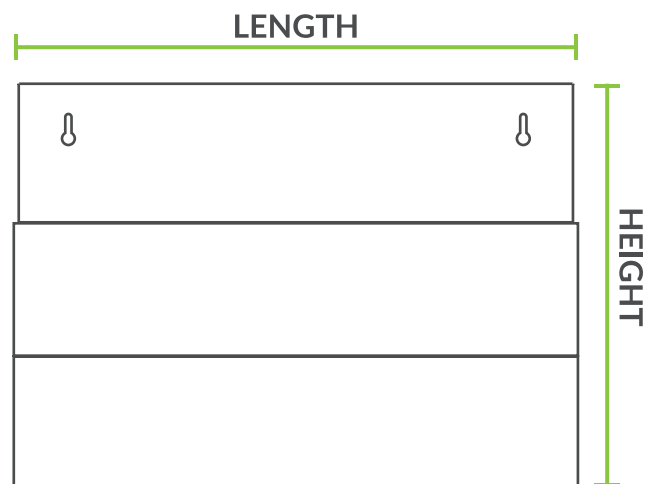


DOUBLE TIER

SIDE



FRONT





Item #: 600GRSU2324C Project: _____

B8

Qty: 2 Date: _____ Approval: _____

Regency Stainless Steel Corrugated Top Glass Rack Storage Unit - 23" x 24"

Item #600GRSU2324C



Technical Data

Length	24 Inches
Width	23 Inches
Height	33 Inches
Backsplash Height	3 Inches
Shelf Height	7 1/8 Inches
Work Surface Height	30 Inches
Backsplash	With Backsplash
Base Style	Cabinet
Drain Size	1 Inch
Features	NSF Listed
Leg Construction	Stainless Steel
Material	Stainless Steel
Top Style	Corrugated
Type	Glass Rack Storage Units

Features

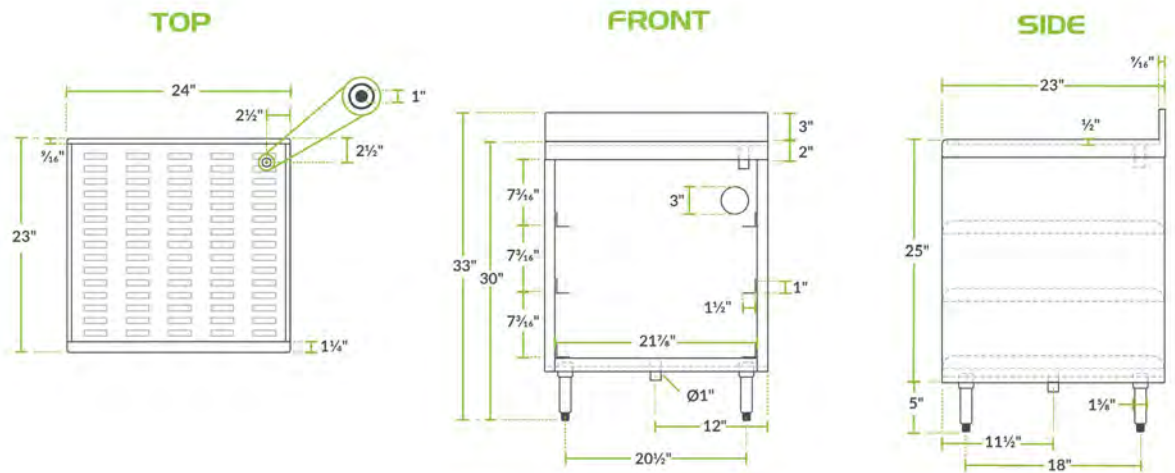
- Made of durable 18 gauge, 304 stainless steel
- Corrugated top and stainless steel legs and feet
- 3" backsplash protects walls
- Open front; 7 3/16" high sections can hold up to three full size glass racks
- Perfect for bar service settings

Certifications



Plan View

B8



Notes & Details

Store your glassware and keep it close enough for easy access with this Regency stainless steel corrugated top glass rack storage unit. An enclosed base cabinet is fitted with glass rack slides $7 \frac{3}{16}$ " apart and can hold up to three racks at once. A 3" backsplash, integrated drain, and corrugated top all allow for easy cleanup. Plus, the top of the cabinet is a convenient place for drying glasses or unloading glass racks.

This glass rack storage unit is constructed of all 18 gauge type 304 stainless steel for long-lasting durability and corrosion-resistance. Additionally, the 3" diameter drain hole in the back panel makes for easy plumbing maintenance and the 1" IPS drain tubing is included for convenient installation.

With 6" stainless steel legs that fit into stainless steel sockets and have bullet feet, this unit keeps glass racks up off the floor for sanitary storage. Plus, the legs give you enough clearance to clean beneath the cabinet.

⚠ WARNING: This product can expose you to chemicals including Nickel and Lead, which are known to the State of California to cause cancer, birth defects, or other reproductive harm. For more information, go to www.p65warnings.ca.gov.



Project _____
 Item _____
 Quantity _____
 CSI Section 11400 _____
 Approval _____
 Date _____

B9
Qty: 1

NOBLE UL30H

NOBLE UL30H



Standard Features

- Automatic tank fill
- Push button start
- Labyrinth type door design
- Automatic pumped drain for floor and wall drain installations
- Fill and Dump design
- Stainless steel wash/rinse pump
- Solid state controls
- Sustaining heater
- Deliming cycle
- Simplified controls allow easy access for operation and service
- Door switch
- Low product indicator light
- One (1) each peg and combination rack included
- Above water scrap basket
- Built-in chemical pumps and priming switches

Options

- ☒ Scale Prevention System (SPS)
- ☒ Replacement Cartridge for SPS
- ☒ Water Hammer Arrestor
- ☐ Back Panel
- ☐ Casters (adds 3/4" to height)
- ☐ Tie Down

Accessories

- ☐ 36-Compartment Rack
 - ☐ 4 1/8" tall (105 mm)
 - ☐ 5 5/8" tall (143 mm)
 - ☐ 7" tall (178 mm)
- ☐ Combination Rack
- ☐ Peg Rack
- ☒ Machine Stand
 - ☒ 6" (152 mm) high
 - ☐ 18" (457 mm) high

Defer to Bar Manager

Specifications

- Uses 1.16 gallons (4.39 liters) of water per rack
- Cleans 30 (24)* racks per hour
- Two-minute automatic cycle
- Powerful 1 hp wash pump motor
- Air insulated between body and stainless steel housing
- Durable stainless steel construction
- Low product indicator light alerts operator when detergent and sanitizer are low

Notes:

A vent hood is not recommended above the NOBLE UL30H as it does not produce excessive vapors. *Always check with the local building code to know what type of ventilation is required for commercial dish machine installations in your area.*

Normal operation of the NOBLE UL30H generates steam that may escape from the door. Materials such as wood laminate, veneers, etc. are unsuitable for use in areas exposed to dishwasher steam and detergents. Stainless steel or other moisture-resistant shields are recommended for surfaces adjacent to NOBLE UL30H sides and top.



Intertek

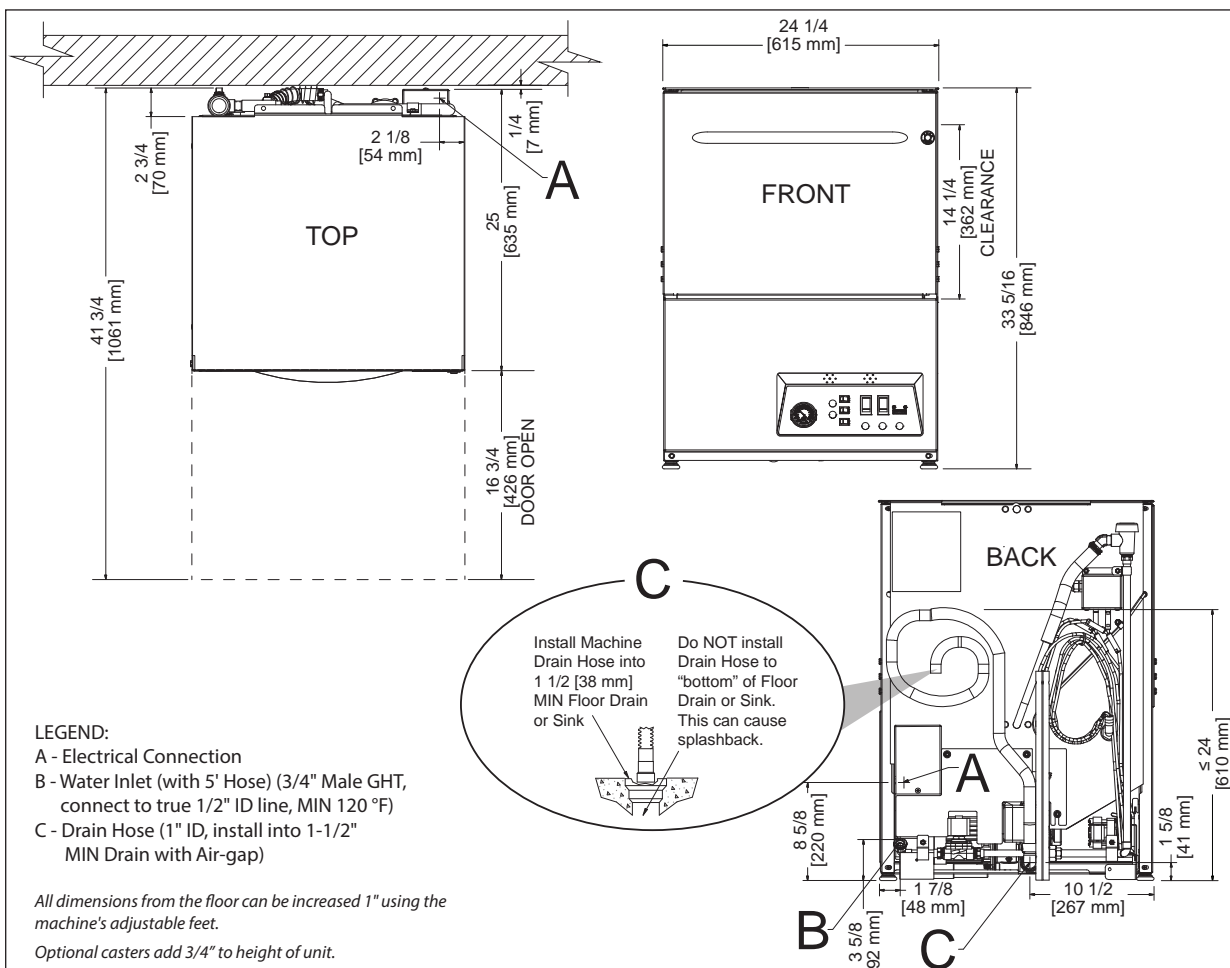


Intertek



*Racks per hour calculated with NSF suggested load time of thirty (30) seconds for front opening type

NOBLE UL30H



MODEL NO.	MACHINE DIMENSIONS				WALL CLEARANCE	SHIPPING INFORMATION					
	INSIDE CLEARANCE HEIGHT	INSIDE CLEARANCE WIDTH	INSIDE CLEARANCE DEPTH	DOOR OPEN DEPTH		WEIGHT	CLASS	CUBE	HEIGHT	WIDTH	DEPTH
NOBLE UL30H	14 1/4" (362 mm)	20" (508 mm)	20" (508 mm)	41-3/4" (1061 mm)	1/4" (6 mm)	242 lbs (110 kg)	85	20.09 cu. ft.	43 1/2" (1105 mm)	28" (712 mm)	28 1/2" (724 mm)

OPERATING CAPACITY - Normal Cycle

Racks per Hour	30 (24)*
Dishes per Hour	750
Glasses per Hour	1,080

OPERATING CYCLE (seconds)	Wash	Rinse	Dwell	Total Cycle
	56	35	29	120

ELECTRICAL REQUIREMENTS

Power Supply	Total Load	Minimum Circuit Ampacity	Maximum Overcurrent Protection
115/60/1	10.0 A	16.25 A	20 A

HOW TO SPECIFY: NOBLE UL30H

WATER REQUIREMENTS

Incoming Water Temperature (min)	120 °F (49 °C)
Gallons per Rack	1.16 gal (4.39 L)
Gallons per Hour	34.8 gal (131.73 L)
Gallons per Hour**	27.84 gal (105.39 L)
Flow Pressure (PSI)	20 ± 5
Waterline Size (NPT)	3/4" Male GHT (connect to true 1/2" ID line)
Drainline Size (ID)	1"

OPERATING TEMPERATURES

Wash	120 °F min (49 °C); 140 °F (60 °C) recommended
Rinse	120 °F min (49 °C); 140 °F (60 °C) recommended

WASH PUMP MOTOR

Wash Pump	1 hp
-----------	------

*Racks per hour calculated with NSF suggested load time of thirty (30) seconds for front opening type

**Gallons per hour calculated with NSF suggested load time of thirty (30) seconds for front opening type



CU3030 - 300lb Self-Contained Ice Machine

Prodigy® Undercounter Cuber with Storage

B10

Qty: 1

Note: We can add another one of these if we end up needing one.

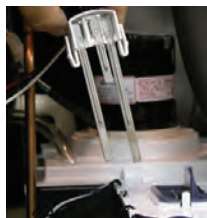
Features and Benefits

- Prodigy® undercounter cubers use significantly less energy and water than other cube ice machines, exceeding Federal energy efficiency regulations.
- AutoAlert™ control panel can communicate operating status and signal when it's time to descale, sanitize and more- making upkeep easier.
- The patented WaterSense adaptive purge control delivers maximum reliability by reducing scale buildup for a longer time between cleanings.
- All external panel components are crafted for optimal aesthetic appeal through superior fit and finish.
- Preventative maintenance is simpler than ever with easily-removed door, top panel and storage bin allowing clear access to all internal components and a diagnostic code display insuring the right fix the first time.
- Includes ice scoop, 6" adjustable legs and 6' power cord.



CU3030

WaterSense Adaptive Purge Control



24 Hour Volume Production

Air Cooled			Water Cooled		
70°F/21°C 50°F/10°C	Air Water	90°F/32°C 70°F/21°C	70°F/21°C 50°F/10°C	Air Water	90°F/32°C 70°F/21°C
313/142 lb/kg		224/102 lb/kg	347/158 lb/kg		282/128 lb/kg



Cube Ice

Common ice form, ideal for mixed drinks.



Small Cube
7/8" x 7/8" x 3/8"
(2.22 x 2.22 x .95 cm)



Medium Cube
7/8" x 7/8" x 7/8"
(2.22 x 2.22 x 2.22 cm)



Certification



Warranty

- 3 years parts and labor on all components.
- 5 years parts and labor on the evaporator.
- 5 years parts on the compressor and condenser.
- Warranty valid in North, South & Central America for commercial installations.
- Contact factory for warranty in other regions.
- Residential Applications: 1 year parts and labor

Scotsman®

- 101 Corporate Woods Parkway, Vernon Hills, IL 60061 •
- 1-800-SCOTSMAN • Fax: 847-913-9844 • www.scotsman-ice.com • customer.relations@scotsman-ice.com •

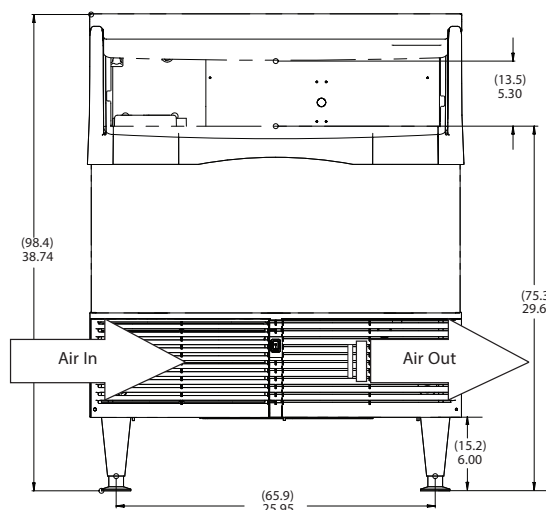
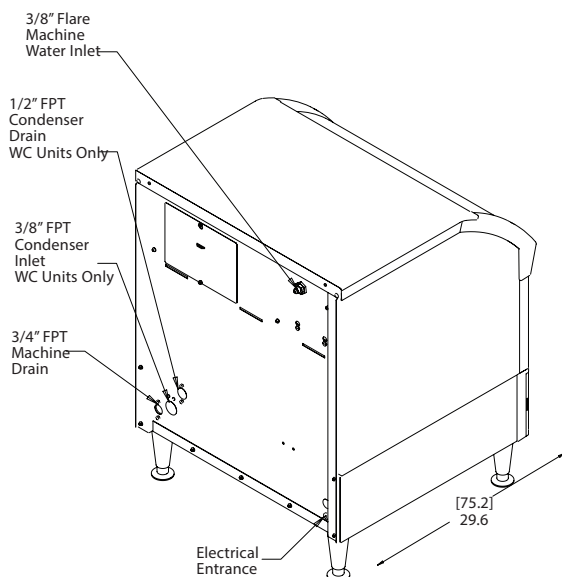
CU3030 - 300lb Self-Contained Ice Machine

CU3030 - 300lb Self-Contained Ice Machine

Prodigy® Undercounter Cuber with Storage

B10

Installation Note: Allow 6" at back for utility connections



Specifications

Model Number*	Condenser Unit	Storage lb/kg	Basic Electrical Volts/Hz/Phase	Max. Fuse Size or HACR Circuit Breaker (amps)	Circuit Wires	Min. Circuit Ampacity	Energy Consumption kWh/100 lb (45.4 kg) 90°F(32°C)/70°F(21°C)	Water Usage Gallons/100 lb (liters/45.4 kg)	
								Potable 90°F(32°C)/70°F(21°C)	Condenser 90°F(32°C)/70°F(21°C)
CU3030MA-1	Air	110/50	115/60/1	15	2	Cord	7.35	18.0/68.2	-
CU3030MA-32	Air	110/50	208-230/60/1	15	2	Cord	7.35	18.0/68.2	-
CU3030SA-1	Air	110/50	115/60/1	15	2	Cord	7.35	18.0/68.2	-
CU3030SA-32	Air	110/50	208-230/60/1	15	2	Cord	7.35	18.0/68.2	-
CU3030SW-1	Water	110/50	115/60/1	15	2	Cord	5.22	18.0/68.2	150/566



All Models

Dimensions (W x D x H):

Unit: 30" x 30" x 33"
(76.2 x 76.2 x 83.8 cm)

Shipping Carton: 33" x 33" x 39.5"
(83.8 x 83.8 x 100.3 cm)

Shipping Weight: 230 lb / 104 kg

BTUs per hour: 5,200

Refrigerant: R-404A



Accessories

Model Number	Description
KLP85	Kit 6 inch leg SS
KPUFM30	Kit Prodigy undercounter floor mount 30 inch for CU3030 (add .5" to height)

Scotsman recommends all ice machines have water filtration. See Scotsman water filter specification sheet for details.



Operating Requirements

	Minimum	Maximum
Air Temperatures	50°F (10°C)	100°F (38°C)
Water Temperatures	40°F (4.4°C)	100°F (38°C)
Remote Cond. Temps	-20°F (-29°C)	120°F (49°C)
Water Pressures	20 PSIG (1.4 bar)	80 PSIG (5.5 bar)
Electrical Voltage	-5%	+10%

Specifications and design are subject to change without notice.



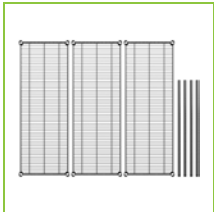
Item #: 460EB1848K33 Project: _____

Qty: **3** Date: _____ Approval: _____

B11

Regency 18" x 48" NSF Black Epoxy 3-Shelf Kit with 34" Posts

Item #460EB1848K33



Technical Data

Length	48 Inches
Width	18 Inches
Height	34 Inches
Assembled	Assembly Required
Capacity	1800 lb.
Color	Black
Features	NSF Listed
Finish	Black Epoxy
Individual Shelf Capacity	600 lb.
Material	Epoxy-Coated Steel
Number of Shelves	3 Shelves
Style	Stationary Vented
Type	Shelving Kits
Usage	All Environments Dry Environments Moist Environments Office Retail

Features

- Epoxy coating resists corrosion in moist / humid environments for long-lasting use
- (3) 18" x 48" shelves accommodate up to 600 lb. of evenly distributed weight
- (4) 34" stationary posts allow for shelves to be adjusted; foot included and required for use
- Includes 12 pairs of split sleeves
- Wire design promotes proper air flow around stored products

Certifications



Regency Space Solutions



Notes & Details

Keep your storage area organized with this Regency 18" x 48" NSF black epoxy 3-shelf kit. This kit includes (3) 18" x 48" wire shelves and (4) 34" posts, which allow you to create a convenient storage solution for your restaurant, hotel, bar, warehouse, or garage. For maximum versatility, the durable zinc plated metal with a black epoxy coating allows for use in either dry or moist environments, making the unit a multipurpose investment that's sure to accommodate your ever-evolving needs. Plus, the unit's high-quality design is commercial grade and delivers the reliable performance every business expects and needs.

This kit boasts an attractive wire construction that works well in front-of-house merchandising as well as display spaces in your boutique, market, or other business venue. It also allows for proper air flow around stored supplies, products, or ingredients. Plus, since the posts are marked in regularly-spaced intervals and use a split sleeve system of assembly, the shelves are easy to move higher or lower depending on your organizational needs. 12 pairs of split sleeves are provided, and each shelf can accommodate an impressive 600 lb. of evenly distributed weight. Likewise, a foot is provided for each post and must be used for proper installation. The shelving unit requires assembly.

⚠ WARNING: This product can expose you to chemicals including lead, which are known to the State of California to cause cancer, birth defects, or other reproductive harm. For more information, go to www.p65warnings.ca.gov.

Avantco GF25-HC 26" Black Glass Froster / Plate Chiller - 115V

Item #178GF25HC



Technical Data

Width	26 Inches
Depth	28 Inches
Height	34 Inches
Interior Width	22 Inches
Opening Width	20 1/2 Inches
Interior Depth	23 Inches
Opening Depth	9 Inches
Interior Height	26 Inches
Amps	1.33 Amps
Hertz	60 Hertz
Phase	1 Phase
Voltage	115 Volts
Access Type	Doors
BTU (LBP)	881 BTU
Capacity	4.1 cu. ft.
Compressor Location	Bottom Mounted
Door Style	Sliding
Exterior Finish	Black
Horsepower	1/3 HP
Installation Type	Freestanding
Number of Doors	1 Doors
Number of Shelves	4 Shelves
Plug Type	NEMA 5-15P
Power Type	Electric
Refrigerant Type	R-290
Temperature Range	-5 - 2 Degrees F

Features

- Designed to frost beer glasses and chill salad plates for a better guest experience
- Black coated steel exterior
- Digital controller
- Includes 4 epoxy-coated steel shelves
- 115V, 1/3 hp; R290 refrigerant; 1.33 Amps

Certifications



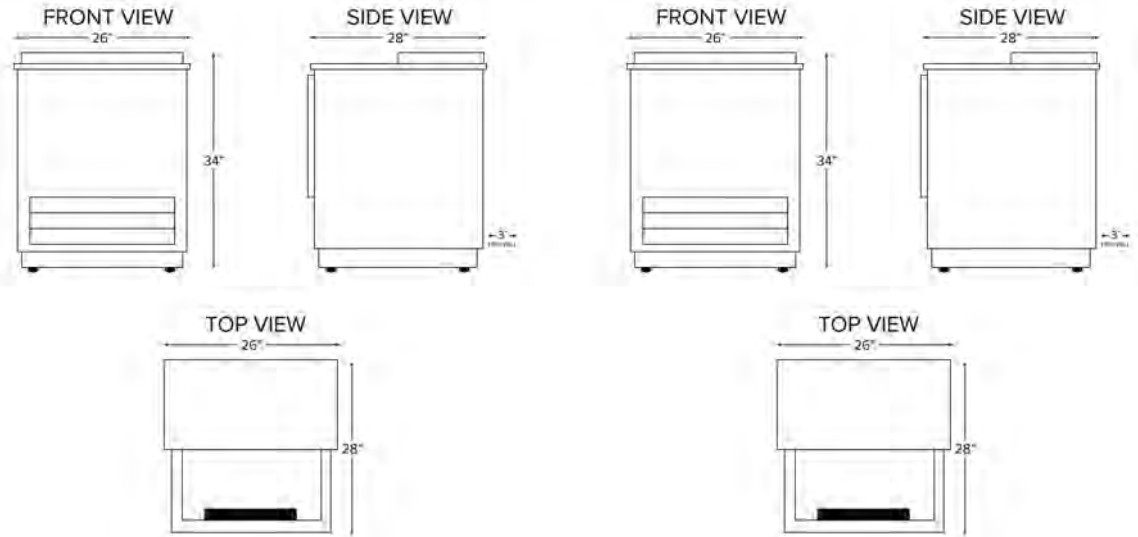
5-15P



ETL US & Canada

Plan View

B12



Notes & Details

There's no better way to ensure properly chilled plates or frosted glasses than by using the Avantco GF25-HC 26" black glass froster and plate chiller! With a powerful 1/3 hp compressor and a -5 to 2 degree Fahrenheit temperature range, this glass froster is the perfect way to cool your salad plates before service or put a delicate layer of frost on your craft beer glasses. While this unit is not for storing food or beverages, it is great for preparing the dishes or glasses you will use to serve guests. Also, it does not need to be running continuously so your staff can turn it off after hours to save electricity!

The 4.1 cu. ft. of interior space can hold plenty of salad plates or beer mugs. The Avantco GF25-HC glass froster's compressor uses R290 refrigerant. This specialized refrigerant has an ozone depletion potential (ODP) of 0 and a global warming potential (GWP) of 3. To simplify maintenance, this unit is equipped with an automatic defrost system.

The interior of this unit is made of white painted aluminum while the exterior is made of durable black coated steel. Polyurethane insulation helps to maintain the interior temperatures by minimizing temperature transfer while the sliding stainless steel door allows easy access when it's time to plate up your food or draw another glass of beer. A 115V electrical connection is required for operation.

⚠ WARNING: This product can expose you to chemicals including lead, which are known to the State of California to cause cancer, birth defects, or other reproductive harm. For more information, go to www.p65warnings.ca.gov.