



FOR LEASE: 801 North Mur-Len Rd Olathe, KS 66062



PROPERTY HIGHLIGHTS

- Available Suites:
 - Suite 104: 4,074 +/- RSF (Divisible)
 - Suite 107: 972 +/- RSF
- Medical office build-out
- Two covered entrances for easy vehicle drop off
- Common areas of building updated in 2022/23
- Excellent access to I-35 through either 119th Street or 135th Street

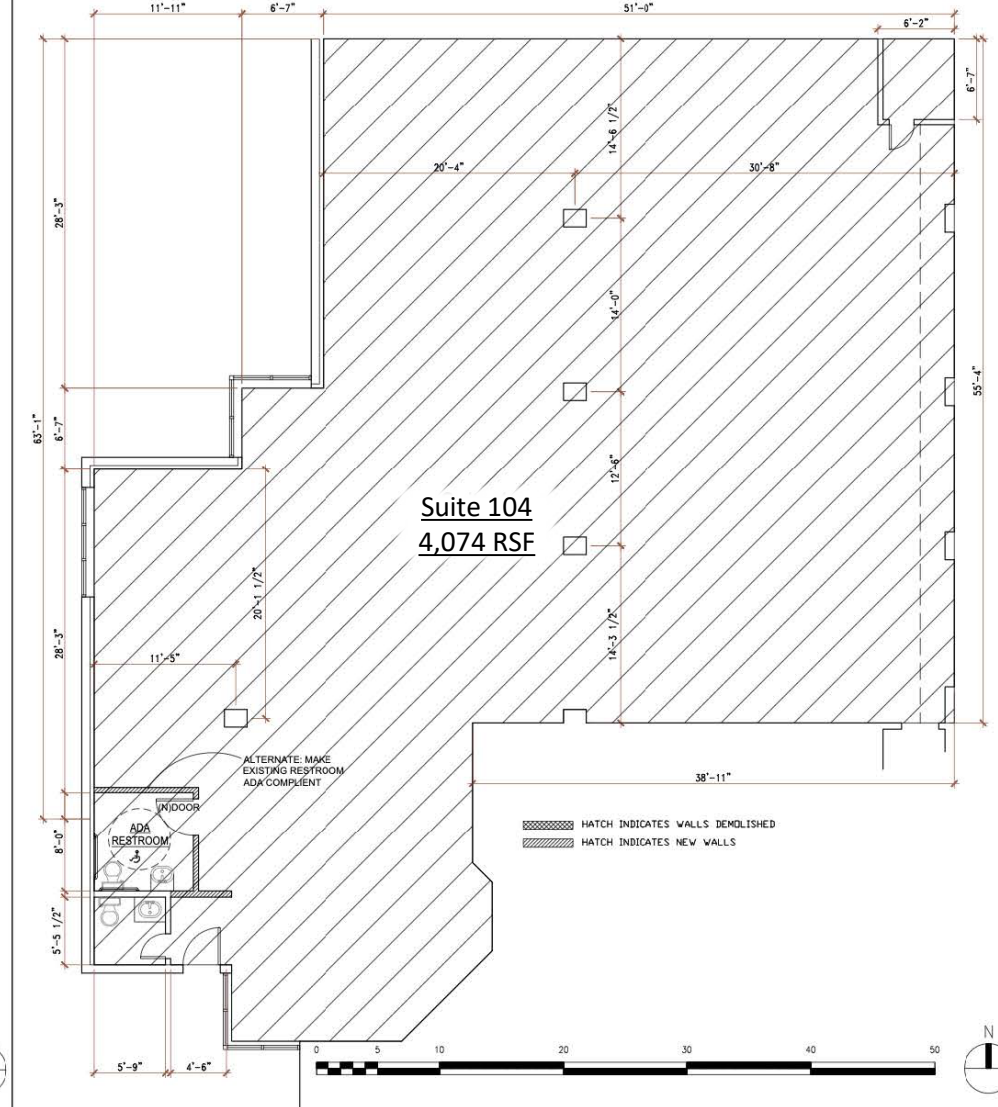
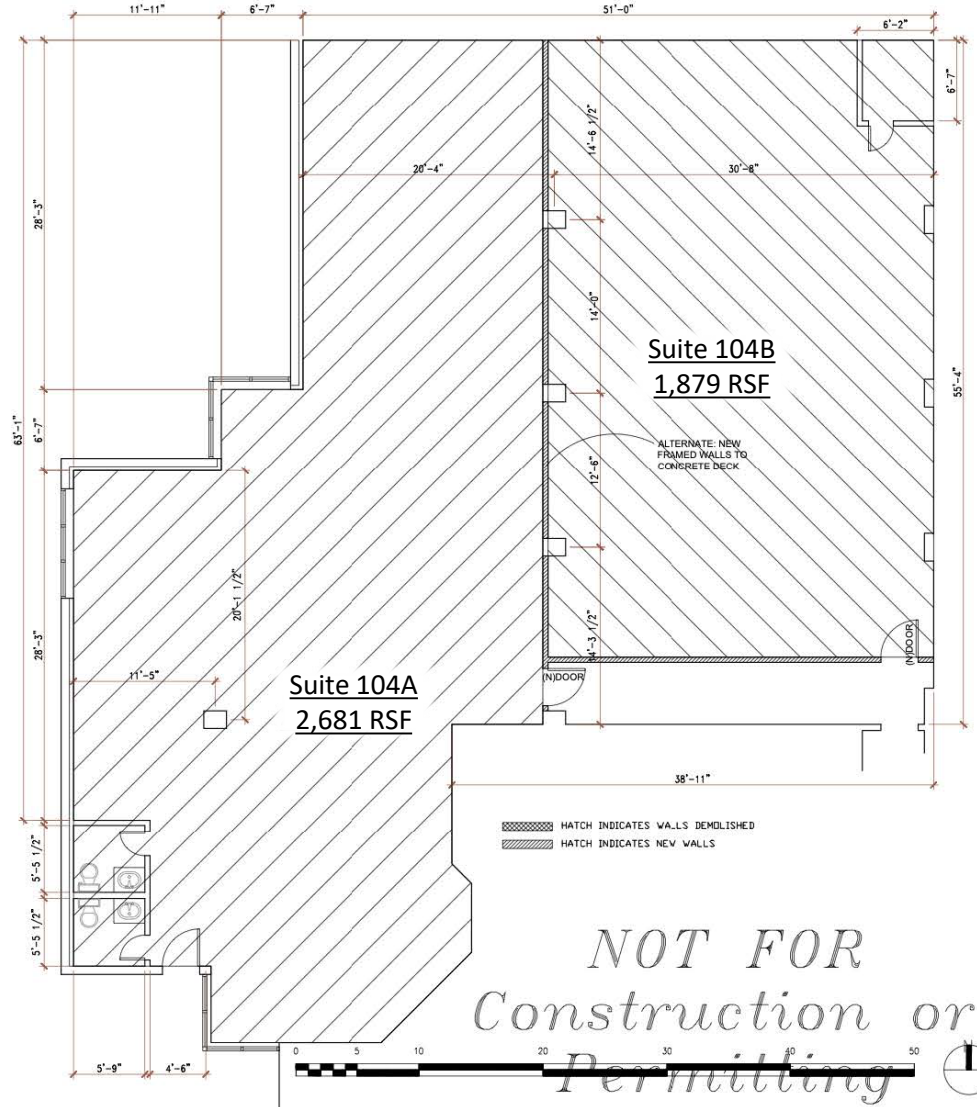
Adam Lyngar
Adam@cadencekc.com
916.747.3326

Lynette Russ
Lynette@cadencekc.com
816.590.7890

CADENCE
COMMERCIAL REAL ESTATE



SUITE 104 FLOOR PLAN



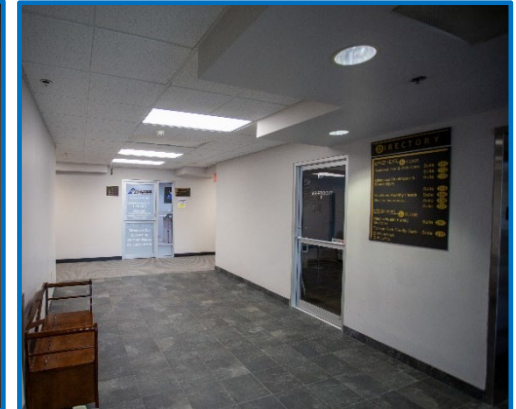
Adam Lyngar
Adam@cadencekc.com
916.747.3326

Lynette Russ
Lynette@cadencekc.com
816.590.7890





PROPERTY PHOTOS



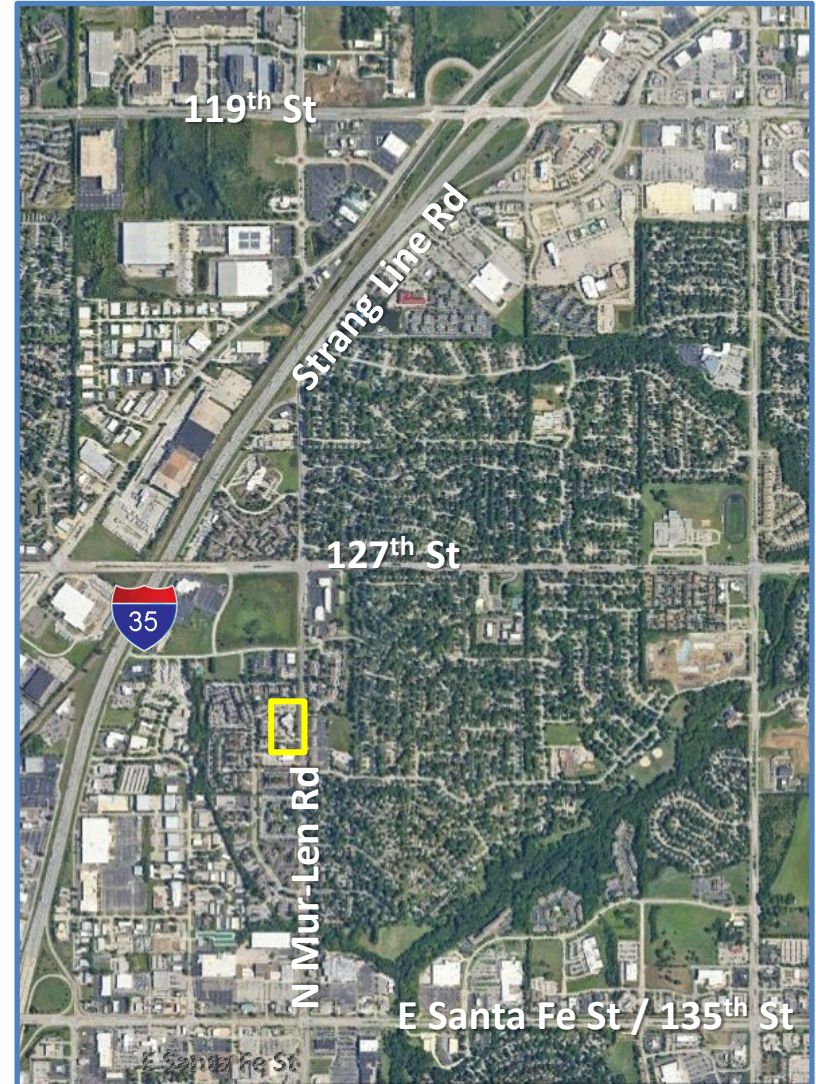
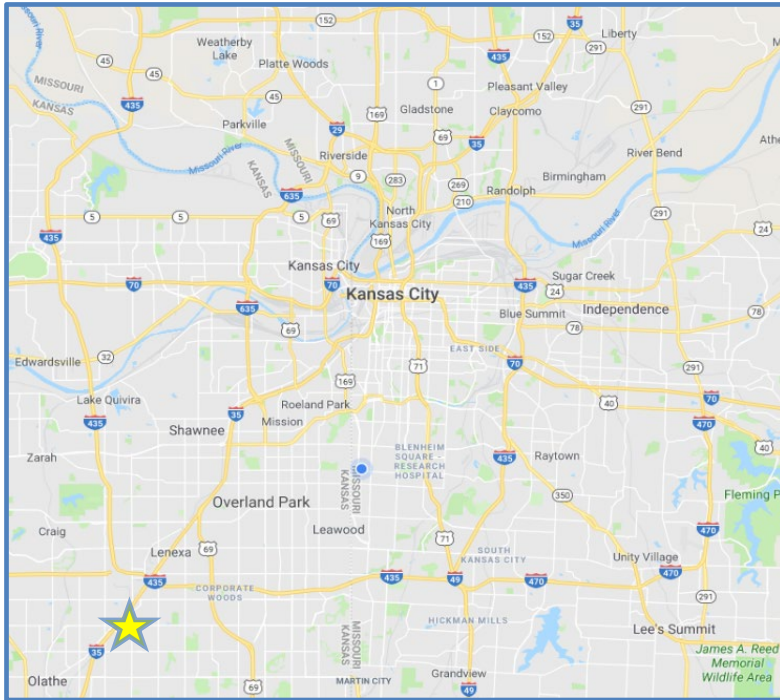
Adam Lyngar
Adam@cadencekc.com
916.747.3326

Lynette Russ
Lynette@cadencekc.com
816.590.7890

CADENCE
COMMERCIAL REAL ESTATE



801 North Mur-Len Rd Olathe, KS 66062



2023 Demographics	1 mile	3 miles	5 miles
Population	11,428	97,757	212,171
Households	4,595	37,879	79,857
Average HH Income	\$84,672	\$111,648	\$129,355

Adam Lyngar
Adam@cadencekc.com
916.747.3326

Lynette Russ
Lynette@cadencekc.com
816.590.7890

CADENCE
COMMERCIAL REAL ESTATE