

Available Acres 0.35

Land For Sale

Available SF 15,278



Address: 10826 S Central Ave, Los Angeles, CA 90059
Cross Streets: S Central Ave/E 109th St

Great Site For Residential or Commercial Development
 Opportunity Zone Location
 Nearly 159' of Central Ave Frontage
 Just Blocks North of 105 Freeway Ramps
 ±2,850 SF Building Currently Used as a Market

Sale Price/SF: \$124.36
Sale Price: \$1,900,000.00
Available Acres: 0.35 Ac
Available SF: 15,278 SF
Divisible SF: No
Building SF: 2,856 SF
Yard: Paved

Gas: Yes
Water: Yes
Sewer: Yes
Electric: Yes
Fiber: Yes

Specific Use: Industrial
Zoning: C2-2D-CPIO
Rail Service: No
Market Area: Outlying Los Angeles
APN: 6070-001-039 & 040

Listing Company: Dorin Realty Company
Agents: [Mark Whitman 213-627-0007](mailto:MarkWhitman@dorinrealty.com)

Listing #: 40985190
Notes: All details must be verified.

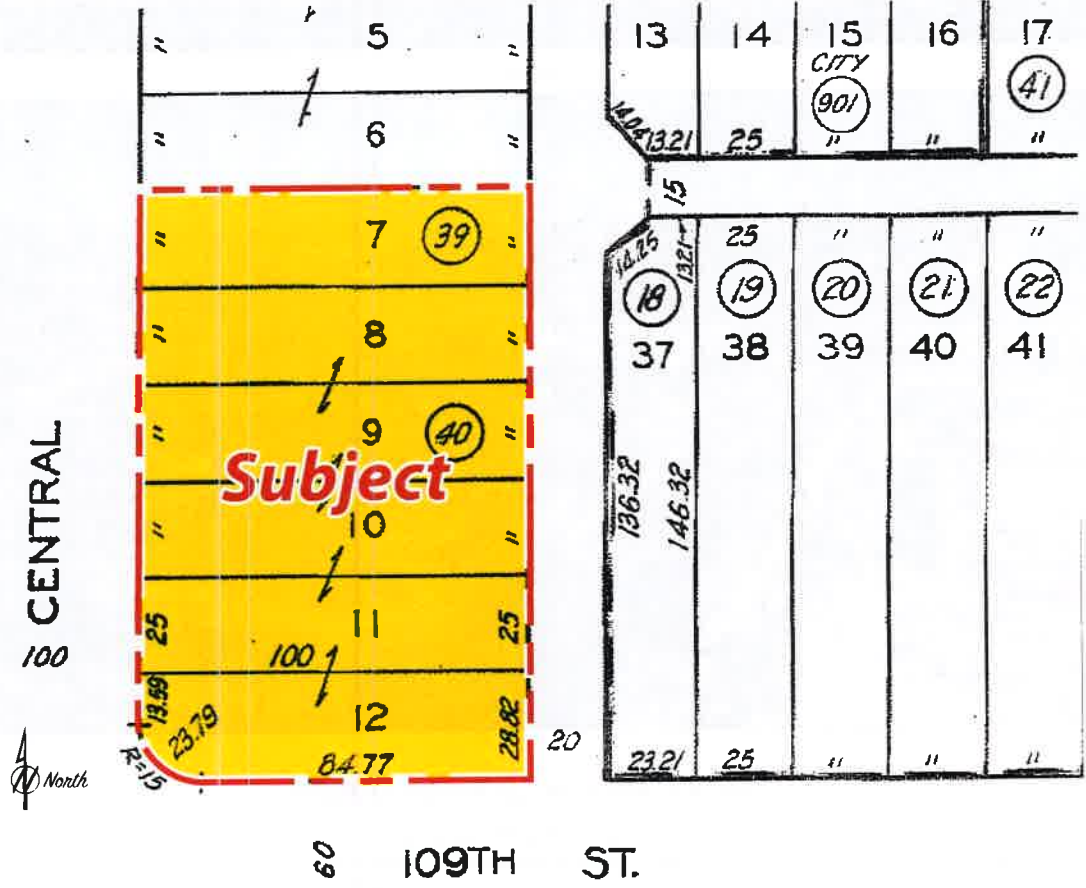
Listing Date: 08/29/2024

FTCF: CB000N000S300/A0AA

Mark Whitman
 mwhitman@dorinrealty.com
 213-627-0007



10826 S. Central Ave., Los Angeles, CA 90059



 <p>DORIN REALTY COMPANY, INC. Lic. No. 00531646</p>	<p>Contact exclusive agent:</p> <p>Mark Whitman Lic. No. 00918875 mwhitman@dorinrealty.com 213-627-0007 Ext 124 4555 Pacific Blvd., Vernon, CA 90058-2207</p>	<p>Industrial and Commercial Real Estate Specialists Since 1959</p> <p>www.dorinrealty.com</p> <p><small>The information contained herein is from sources we believe to be reliable but, we do not guarantee its accuracy. All measurements & dimensions are approximations and are not to scale. Clients are encouraged to verify their accuracy.</small></p>
--	---	---