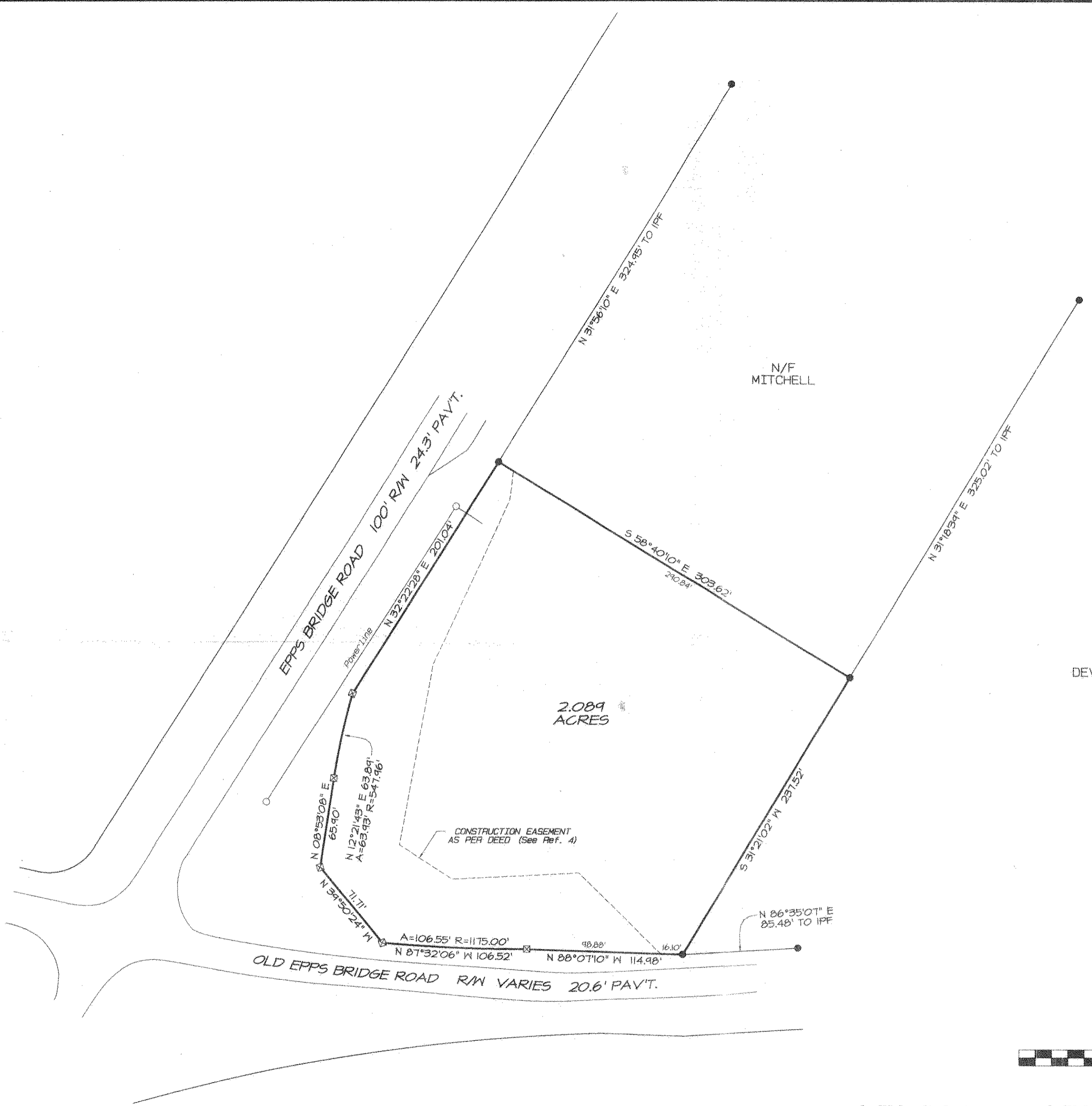


MAGNETIC NORTH

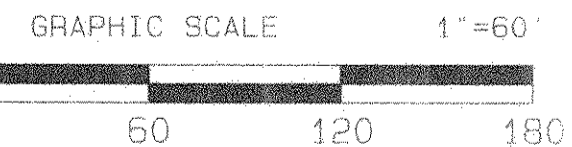


2.089 ACRES

N/F MITCHELL

J.R.G. DEVELOPMENT

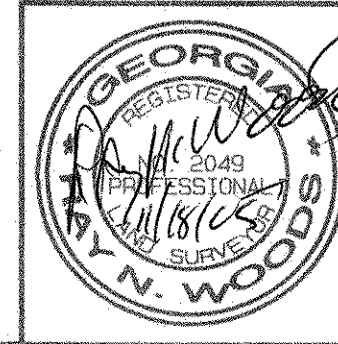
- REFERENCE:
- 1) OUR SURVEY FOR J.R.G. DEVELOPMENT DATED FEB. 06, 2003
  - 2) SURVEY FOR MILL CORP. BY BRETT CHANDLER & ASSOC., INC. WITH REVISED DATE OF JAN. 10, 2001.
  - 3) PLAT BOOK 20 PAGE 270
  - 4) DEED BOOK 1627 PAGE 365



● IPF-Iron Pin Found    ○ IPS-Iron Pin Set    ∅ - Traverse Point    ⊠ R/W Monument

I hereby certify, this plat is a correct representation of the land platted and has been prepared in conformity with the minimum standards and requirements of law.

*Ray N. Woods*



SURVEY FOR				<b>GENE HOWARD</b>	
SMD: 1467	COUNTY: ATHENS-CLARKE	STATE: GEORGIA	DATE: Nov. 10, 2005	INSTRUMENT: LEICA	
DRAWN BY: MIKE W.	WOODS & CHASTAIN SURVEYORS, INC. PROFESSIONAL LAND SURVEYORS			PLAT CLOSURE: 1/631,909	
DWG NAME: MILL CORP EPPS	125 SMITHONIA ROAD WINTERVILLE, GEORGIA 30583 (706)742-8596			FIELD CLOSURE: 17027	
FIELD BOOK: D-110				ANGLE CLOSURE: 2° per station	

