

SPORTSPLEX OFFICE

1188 West Sportsplex Drive, Kaysville, Utah 84037



\$15.00 PSF NNN

**FOR
LEASE**

PROPERTY FEATURES

- Suite 201: 2,900 SF
- Easy Freeway Access
- 81 Parking Stalls
- Professional Improvements
- \$2.50 PSF NNN Fee
- Utilities and In-suite Janitorial are Not Included

FOR MORE
INFORMATION
CONTACT

CHRIS FALK, CCIM, SIOR
801.416.1024
chris.falk@ngkf.com

BRAXTON WILLIE, CCIM
801.416.1050
braxton.willie@ngkf.com



1755 East 1450 South, Suite 100 | Clearfield, Utah 84015 | 801.927.2000 | www.ngacres.com

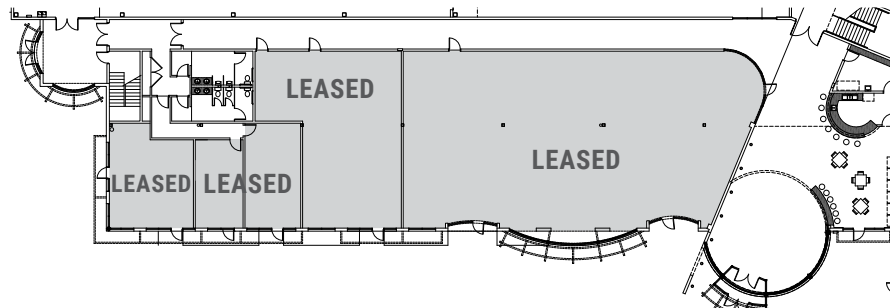
This document has been prepared by Newmark Knight Frank for advertising and general information purposes only. While the information contained herein has been obtained from what are believed to be reliable sources, the same has not been verified for accuracy or completeness. Newmark Knight Frank accepts no responsibility or liability for the information contained in this document. Any interested party should conduct an independent investigation to verify the information contained herein.

SPORTSPLEX OFFICE

1188 West Sportsplex Drive, Kaysville, Utah 84037



FIRST FLOOR



SECOND FLOOR

