

# BACKLICK SQUARE

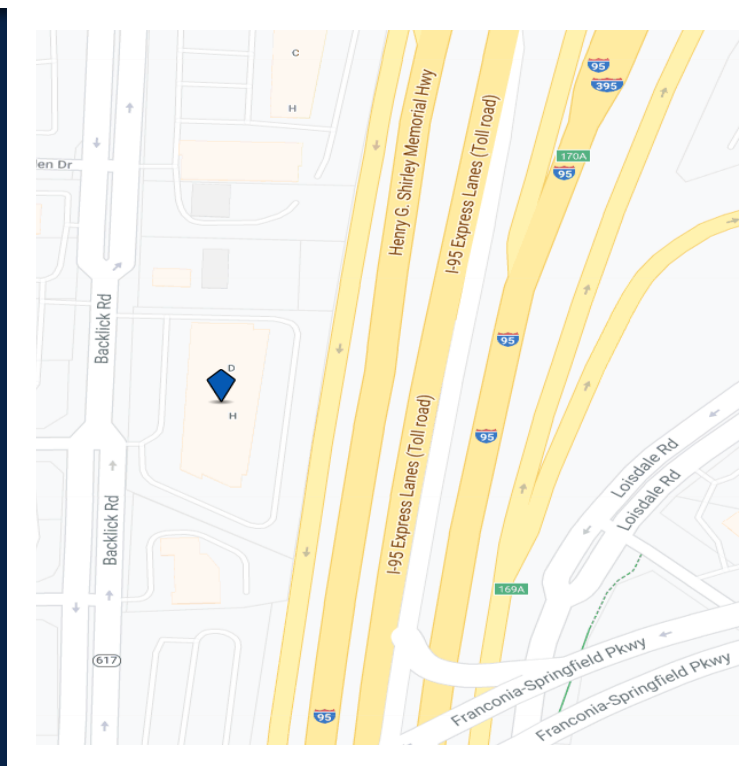
700-900 sqft available

Second Floor

## FOR LEASE

6552 Backlick Road  
Springfield, Virginia 22150

Office Space Available



	Population	Avg. Income
1 mile	19,210	\$117,055
3 miles	119,678	\$127,180
5 miles	358,485	\$125,016

### Features:

- Great Visibility to nearly 70,000 onlookers daily
- In the heart of Springfield, on one of the most traveled roads in Fairfax County
- Easy Access and Easy Parking for Patrons
- Lighted Pylon Signage for Tenants
- Fresh New Look
- Easy Access to I-95, I-495, and I-395, and Fairfax County Parkway

FOR LEASING:

Call: 703.992.7300 or

Email: [leasing@rjmcompanies.com](mailto:leasing@rjmcompanies.com)



**RJM MANAGEMENT**

# BACKLICK SQUARE

JOIN THE HOTTEST BUSINESSES IN PRIME LOCATION  
AT SPRINGFIELD GATEWAY!

## ONE OF THE FINEST OFFICES and RETAIL BUILDINGS:

### GREAT LOCATION

- ✓ 1 TRAFFIC LIGHT FROM I-95, I-495, I-395, and FAIRFAX COUNTY PARKWAY
- ✓ 41,103 HOUSEHOLDS WITHIN 3 MILES (2013)
- ✓ 45,000 TRAFFIC COUNTS

### LATEST UPGRADES

- ✓ HIGH SPEED INTERNET & TELEPHONE
- ✓ UPDATED COMMON AREAS AND BATHROOMS

### CONVENIENT FOR CUSTOMERS AND PATRONS

- ✓ AMPLE PARKING
- ✓ NEAR METRO RAIL AND BUS STOP
- ✓ MONUMENT SIGNAGE FOR TENANT AVAILABLE

### TENANT BENEFITS

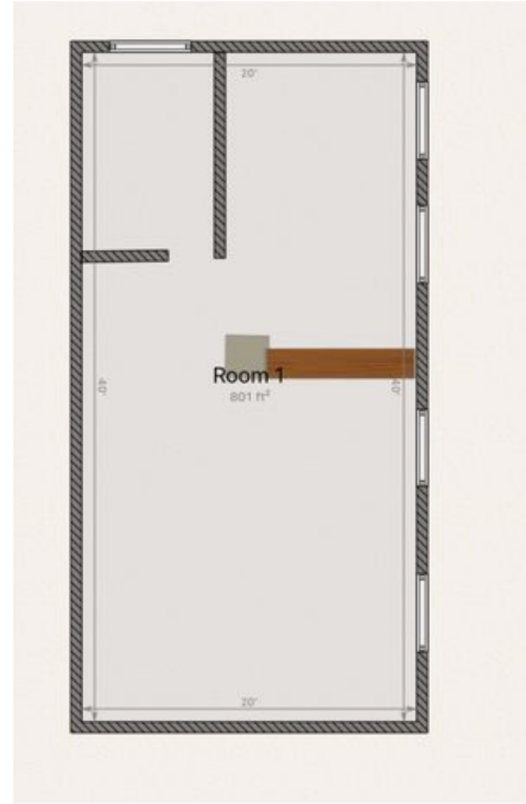
- ✓ COMPETITIVE RENTAL RATES
- ✓ NEARBY FACILITY MANAGEMENT
- ✓ FULL-SERVICE, UPDATED SPACES

\*all information is provided for marketing purposes, subject to change without notice.

# BACKLICK SQUARE

## LARGE OFFICE SUITE FOR LEASE

- ❑ Large 700-900 SqFt. Suites Available
  - ✓ Contact Leasing for details
- Tel: (703) 992 – 7300 or  
Email: [leasing@rjmcompanies.com](mailto:leasing@rjmcompanies.com)



\*all information is provided for marketing purposes, subject to change without notice.

# BACKLICK SQUARE DIRECTIONS



## From I-495 West

1. Take exit 169B toward Springfield/ VA-644W 1.3 mi
2. Turn right on Bland St 0.2 mi
3. Turn right on Amherst Ave 0.2 mi
4. Turn right onto Backlick Rd 0.3 mi
5. Make a left turn into Backlick Square

6715 Backlick Road Springfield, VA 22150

## From I-95

1. Take exit 169B for Bland St 0.4 mi
2. Take a right onto Bland St 0.2 mi
3. Turn right on Amherst Ave 0.2 mi
4. Turn right onto Backlick Rd 0.3 mi
5. Make a left turn into Backlick Square

6715 Backlick Road Springfield, VA 22150

\*all information is provided for marketing purposes, subject to change without notice.