

15 95 WILSONVILLE COMMERCE CENTER



FOR SUBLEASE

*Industrial space with office area available for sublease in
Wilsonville, OR*

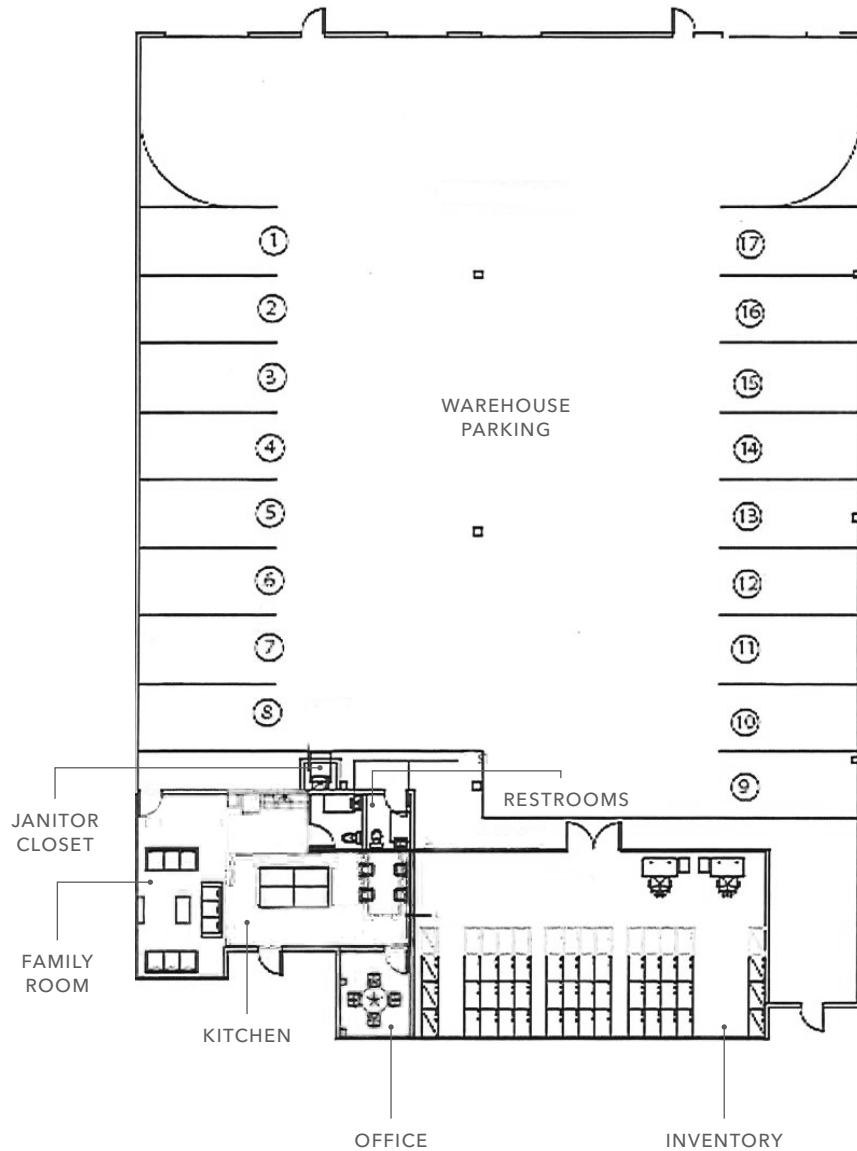
27120 SW 95TH AVE, WILSONVILLE, OR

13,434 SF

BUILDING AREA

2,098 SF

OFFICE AREA



Industrial space with office area available for sublease in Wilsonville, OR.

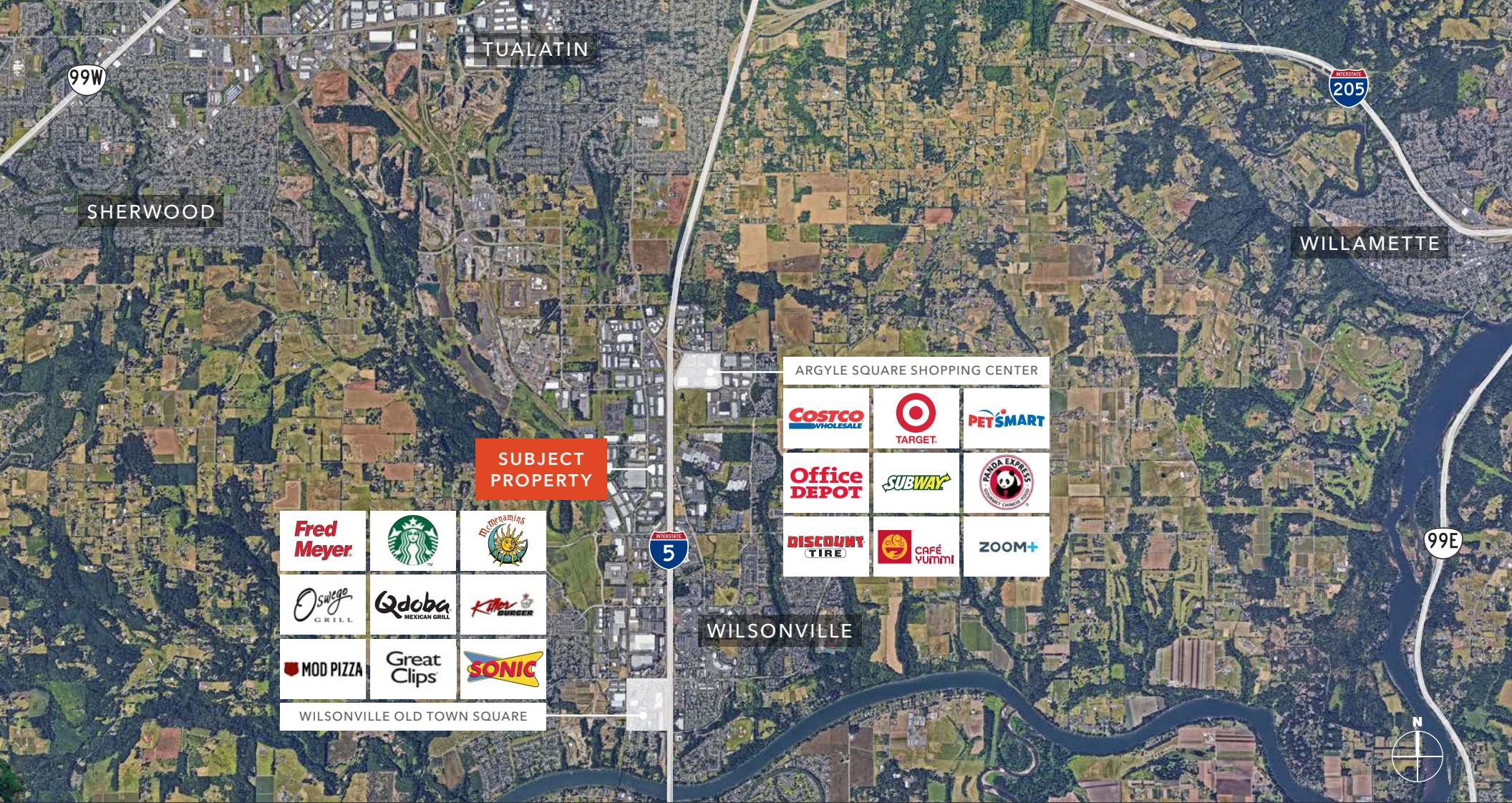
TOTAL AREA	13,434 SF
OFFICE AREA	2,098 SF
CLEAR HEIGHT	26'
COLUMN SPACING	50' x 40'
DOORS	2 dock & 2 grade
SPRINKLERS	ESFR sprinkler system
STAGING	Excellent truck staging
SUBLEASE TERM	Expires 12/31/2027
POWER	277, 480 volt, 3-phase

13,434 SF

AVAILABLE

\$17,500

SUBLEASE RATE, GROSS



15 95 WILSONVILLE COMMERCE CENTER

For more information on this property, please contact

TOM TALBOT, SIOR
 503.221.2270
 tom.talbot@kidder.com

JOHN HALLMAN
 503.721.2721
 john.hallman@kidder.com

KIDDER.COM

This information supplied herein is from sources we deem reliable. It is provided without any representation, warranty, or guarantee, expressed or implied as to its accuracy. Prospective Buyer or Tenant should conduct an independent investigation and verification of all matters deemed to be material, including, but not limited to, statements of income and expenses. Consult your attorney, accountant, or other professional advisor.

