

2nd Floor Office – 2,146 SF +/- | Signage Available



156 Ritchie Highway
SEVERNA PARK, MD 21146



While we have no reason to doubt the accuracy of any of the information supplied, we cannot, and do not, guarantee its accuracy. All information should be independently verified prior to a purchase or lease of the property. We are not responsible for errors, omissions, misuse, or misinterpretation of information contained herein and make no warranty of any kind, express or implied, with respect to the property or any other matters.

MOVING COMMERCIAL REAL ESTATE GOALS **FORWARD.**

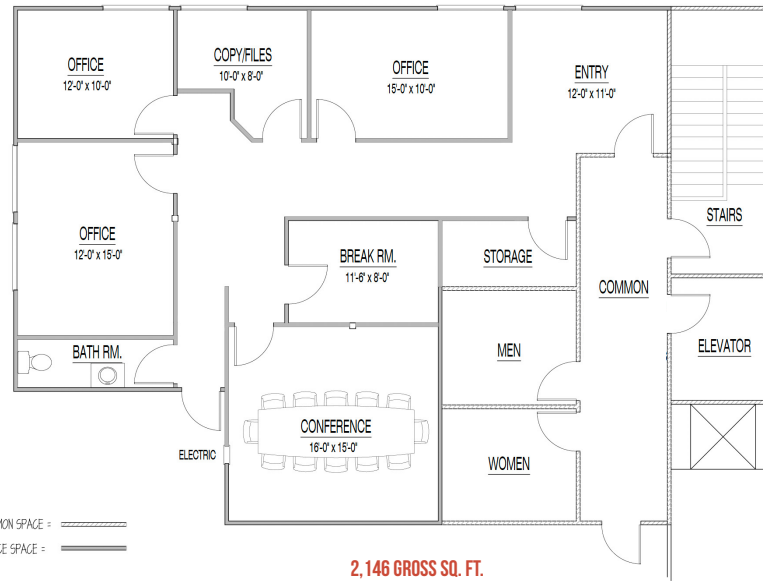
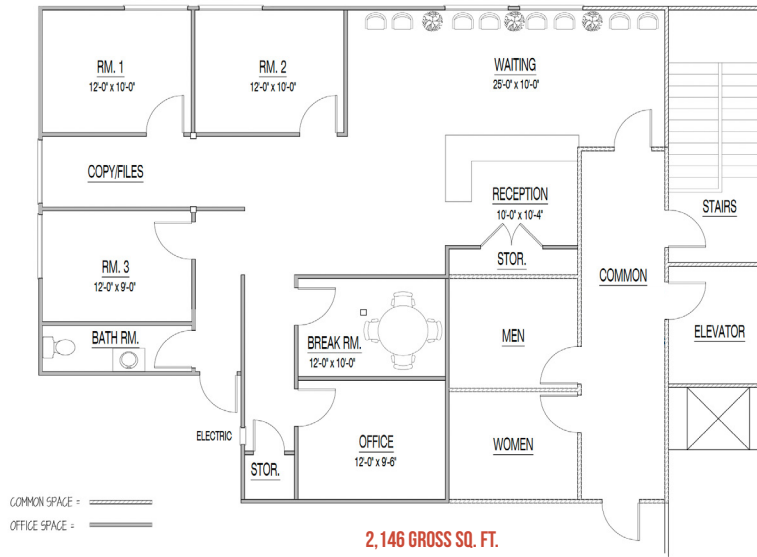
156 Ritchie Highway

SEVERNA PARK, MD

Property Highlights:

- Newly Renovated 2nd Floor Office Available, 2,146 SF +/-
- Space Condition: Warm, Vanilla Shell w/ extensive window line
- Asking Rent: \$22/psf, Full Service
- Elevator Served
- Signage Opportunity available

Proposed Floor Plan Options







Annapolis Family
PHYSICAL THERAPY

156 Ritchie Highway

SEVERNA PARK, MD

Ryan Brant

rbrant@rossocre.com

C | 301.768.2710

Ryan Brassel

ryan@rossocre.com

C | 410.507.3144



www.ROSSOCRE.com

One Annapolis Street | Suite 101 | Annapolis, MD 21401 | www.RossoCRE.com

While we have no reason to doubt the accuracy of any of the information supplied, we cannot, and do not, guarantee its accuracy. All information should be independently verified prior to a purchase or lease of the property. We are not responsible for errors, omissions, misuse, or misinterpretation of information contained herein and make no warranty of any kind, express or implied, with respect to the property or any other matters.