



## NORTHWEST BUSINESS CAMPUS II

2800 CAMPUS BLVD  
PLYMOUTH, MN

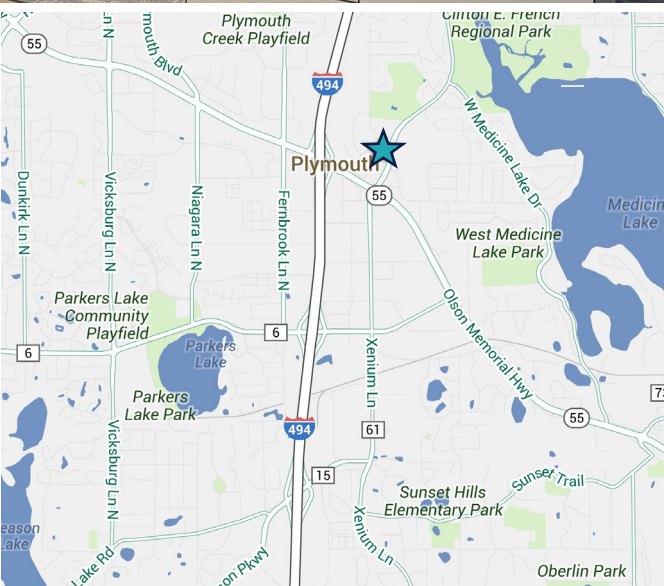


### VACANCY DETAILS

SUITE 140	19,954 SF Total (available on 10/1/2024) 6,515 SF Warehouse Space 2 dock doors
2024 EST. RE TAX & OP	\$8.42 PSF
LEASE RATES	Negotiable

### PROPERTY DETAILS

TOTAL BUILDING SF	65,622 SF
LAND AREA	9.40 acres
CLEAR HEIGHT	14'
YEAR BUILT	1985
PARKING	188 (2.86/1,000) with potential to add more stalls
FREEWAY ACCESS	Access to Hwy 55 via Northwest Blvd



TOM BENNETT  
+1 952 924 4897  
tom.bennett@cbre.com

TOM HAYHOE  
+1 952 924 4804  
tom.hayhoe@cbre.com

PARKER RICKERT  
+1 612 845 8022  
parker.rickert@cbre.com







**NORTHWEST  
BUSINESS  
CAMPUS II**

**2800 CAMPUS BLVD, PLYMOUTH, MN**

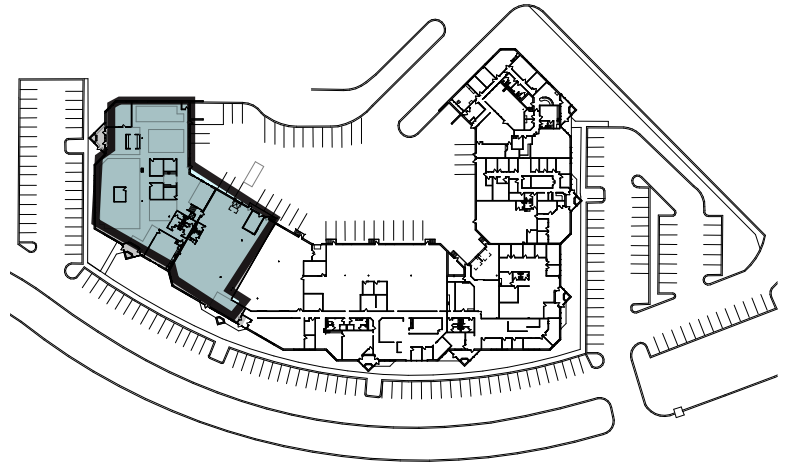
## PROPERTY FEATURES

Class A office finishes

Ample tenant and visitor parking

Plug-And-Play Opportunity

Located in close proximity to a multitude of retail, medical, office, restaurant, and hotel accommodations



**SUITE 140**  
19,954 SF Total  
6,515 SF Warehouse space  
2 dock doors

For more information, please contact:

**TOM BENNETT**  
+1 952 924 4897  
tom.bennett@cbre.com

**TOM HAYHOE**  
+1 952 924 4804  
tom.hayhoe@cbre.com

**PARKER RICKERT**  
+1 612 845 8022  
parker.rickert@cbre.com



© 2025 CBRE, Inc. All rights reserved. This information has been obtained from sources believed reliable, but has not been verified for accuracy or completeness. You should conduct a careful, independent investigation of the property and verify all information. Any reliance on this information is solely at your own risk. CBRE and the CBRE logo are service marks of CBRE, Inc. All other marks displayed on this document are the property of their respective owners, and the use of such logos does not imply any affiliation with or endorsement of CBRE. Photos herein are the property of their respective owners. Use of these images without the express written consent of the owner is prohibited.